

FEEL THE Beat



TB OPERA522

Bassdrum	22"x17" - 10 lugs
Tom Tom	10"x7" - 6 lugs
Tom Tom	12"x8" - 6 lugs
Snare drum	14"x6,5" - 10 lugs
Floor tom	14"x14" - 8 lugs
Shell specifics	6 mm Birch wood + HPL 0,9 mm Melaminc layer, Staves technology shell
NOTE	
Die-cast hoops	
2 x clamp	
Cymbals and hardware not included	



MODELS

- TB OPERA522UL
- TB OPERA522NS
- TB OPERA522ZS
- TB OPERA522MA
- TB OPERA522FB
- TB OPERA522FR



ULIVO
UL



WALNUT
NS



ZEBRANO
ZS



MAPLE
MA



FANTASY BLUE
FB



FANTASY RED
FR

TB OPERA520

Bassdrum	20"x17" - 10 lugs
Tom Tom	10"x7" - 6 lugs
Tom Tom	12"x8" - 6 lugs
Snare drum	14"x6,5" - 10 lugs
Floor tom	14"x14" - 8 lugs
Shell specifics	6 mm Birch wood + HPL 0,9 mm Melaminc layer, Staves technology shell
NOTE	
Die-cast hoops	
2 x clamp	
Cymbals and hardware not included	



MODELS

- TB OPERA520NS
- TB OPERA520UL
- TB OPERA520ZS
- TB OPERA520MA
- TB OPERA520FB
- TB OPERA520FR



WALNUT
NS



ULIVO
UL



ZEBRANO
ZS



MAPLE
MA



FANTASY BLUE
FB



FANTASY RED
FR

TB OPERA418

Bassdrum	18"x16" - 8 lugs
Tom Tom	12"x8" - 6 lugs
Snare drum	14"x5,5" - 10 lugs
Floor tom	14"x14" - 8 lugs
Shell specifics	6 mm Birch wood + HPL 0,9 mm Melaminic layer, Staves technology shell
NOTE	
Die-cast hoops	
1 x clamp	
Cymbals and hardware not included	



MODELS

- TB OPERA418MA
- TB OPERA418NS
- TB OPERA418ZS
- TB OPERA418UL
- TB OPERA418FB
- TB OPERA418FR



MAPLE
MA



WALNUT
NS



ZEBRANO
ZS



ULIVO
UL



FANTASY BLUE
FB



FANTASY RED
FR

TB OPERA416

Bassdrum	16"x14" - 8 lugs
Tom Tom	10"x7" - 6 lugs
Snare drum	13"x6,5" - 8 lugs
Floor tom	13"x13" - 6 lugs
Shell specifics	6 mm Birch wood + HPL 0,9 mm Melaminic layer, Staves technology shell
NOTE	
Die-cast hoops	
Bass drum lifter included	
1 x clamp	
Cymbals and hardware not included	



MODELS

- TB OPERA416ZS
- TB OPERA416UL
- TB OPERA416NS
- TB OPERA416MA
- TB OPERA416FB
- TB OPERA416FR



ZEBRANO
ZS



WALNUT
NS



MAPLE
MA



ULIVO
UL



FANTASY BLUE
FB



FANTASY RED
FR

OPERA TOM



MODELS

8X7

TB OPERATOM08ZS
TB OPERATOM08NS
TB OPERATOM08UL
TB OPERATOM08MA
TB OPERATOM08FB
TB OPERATOM08FR

10X7

TB OPERATOM10ZS
TB OPERATOM10NS
TB OPERATOM10UL
TB OPERATOM10MA
TB OPERATOM10FB
TB OPERATOM10FR

12X8

TB OPERATOM12ZS
TB OPERATOM12NS
TB OPERATOM12UL
TB OPERATOM12MA
TB OPERATOM12FB
TB OPERATOM12FR



OPERA FLOOR TOM



MODELS

13X13

TB OPERAFT13ZS
TB OPERAFT13NS
TB OPERAFT13UL
TB OPERAFT13MA
TB OPERAFT13FB
TB OPERAFT13FR

14X14

TB OPERAFT14ZS
TB OPERAFT14NS
TB OPERAFT14UL
TB OPERAFT14MA
TB OPERAFT14FB
TB OPERAFT14FR

16X16

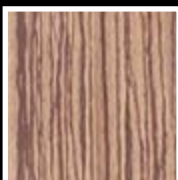
TB OPERAFT16ZS
TB OPERAFT16NS
TB OPERAFT16UL
TB OPERAFT16MA
TB OPERAFT16FB
TB OPERAFT16FR

18X16

TB OPERAFT18ZS
TB OPERAFT18NS
TB OPERAFT18UL
TB OPERAFT18MA
TB OPERAFT18FB
TB OPERAFT18FR



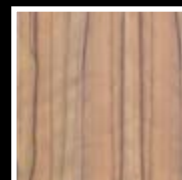
AVAILABLE COLORS



ZS
ZEBRANO



NS
WALNUT



UL
ULIVO

OPERA BASSDRUM



MODELS

16X14

TB OPERABD16ZS
TB OPERABD16NS
TB OPERAB16DUL
TB OPERAB16DMA
TB OPERAB16DFB
TB OPERAB16DFR

18X16

TB OPERABD18ZS
TB OPERABD18NS
TB OPERABD18UL
TB OPERABD18MA
TB OPERABD18FB
TB OPERABD18FR

20X17

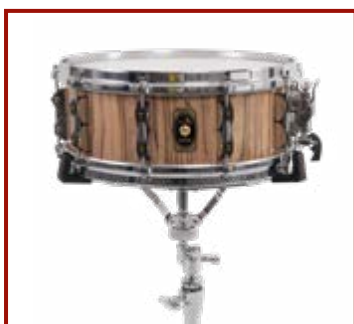
TB OPERABD20ZS
TB OPERABD20NS
TB OPERABD20UL
TB OPERABD20MA
TB OPERABD20FB
TB OPERABD20FR

22X17

TB OPERABD22ZS
TB OPERABD22NS
TB OPERABD22UL
TB OPERABD22MA
TB OPERABD22FB
TB OPERABD22FR



OPERA SNARE DRUM



MODELS

13X5,5

TB OPERASND1355ZS
TB OPERASND1355NS
TB OPERASND1355UL
TB OPERASND1355MA
TB OPERASND1355FB
TB OPERASND1355FR

13X6,5

TB OPERASND1365ZS
TB OPERASND1365NS
TB OPERASND1365UL
TB OPERASND1365MA
TB OPERASND1365FB
TB OPERASND1365FR

14X5,5

TB OPERASND1455ZS
TB OPERASND1455NS
TB OPERASND1455UL
TB OPERASND1455MA
TB OPERASND1455FB
TB OPERASND1455FR

14X6,5

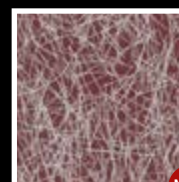
TB OPERASND1465ZS
TB OPERASND1465NS
TB OPERASND1465UL
TB OPERASND1465MA
TB OPERASND1465FB
TB OPERASND1465FR



MA
MAPLE



FB
FANTASY BLUE



FR
FANTASY RED

NEW

NEW

OPERA: TECHNICAL NOTES



SHELL CONSTRUCTION

Built with tapped slats glued with specific PU glues, by using new cutting tools with CNC technology we managed to improve the structure of the shell, making it more compact and solid.

The slat consists of:

1. an outer HPL layer made covered with melamine or wood finishes coated with PU paint
2. birch plywood featuring five layers with phenolic gluing
3. the inner layer is coated with polyurethane (PU) paint to protect the wood from humidity
4. internal reinforcement rings in beech wood strips to tie together and tighten the shell



THE "S.T." LUG (patent pending)

The new Tamburo ST (strong traction) lug stands out for its innovative design with two tie rods connected with a tube. It encloses in a single structure all the essential elements to guarantee the perfect tension of the skin in a sensitive, fluid and stable manner.

Consisting of:

1. an outer casing made of stainless steel (304): lightweight, mechanically resistant and non-deformable
2. it contains a threaded brass (OT58) pin: ideal to ensure a correct, accurate and long-lasting movement of the screw
3. ABS casing: with anti-vibration functions, pin lock and positioning of the clamping nuts 4-chrome-plated brass connection pipe



SNARE STRAINER

Cast block, allows for the smooth and accurate adjustment of the snare strainer tension, ensuring its stability and resistance over time.



BASSDRUM HOOP

Consisting of two HPL layers, an outer and an inner one. Twelve layers of beech at the centre, glued together in the same direction with special PU glue to form a circle with strong mechanical properties, non-deformable.



FLOOR TOM BRACKET

Chromium-plated die-cast block made with a light alloy featuring a double clamping screw, ensures quick and safe locking of the leg, Fitted with soft anti-vibration rubber seal.

The shape and small size makes it easier to position the drum in its case.



RIMS

Ensures greater vibration for the drum, especially at lower frequencies, lightweight thanks to its reduced size.

TB UNIKA522

NEW

Bassdrum	22"x17" - 10 lugs
Tom Tom	10"x7" - 6 lugs
Tom Tom	12"x8" - 6 lugs
Snare drum	14"x6,5" - 10 lugs
Floor tom	14"x14" - 8 lugs
Shell specifics	Internal and external HPL Melaminc layer + Poplar wood
NOTE	
2 x clamp	
Cymbals and hardware not included	



MODELS

TB UNIKA522FB
TB UNIKA522FR
TB UNIKA522UL
TB UNIKA522VT
TB UNIKA522FN
TB UNIKA522FC



TB UNIKA520

NEW

Bassdrum	20"x16" - 10 lugs
Tom Tom	10"x7" - 6 lugs
Tom Tom	12"x8" - 6 lugs
Snare drum	14"x6,5" - 10 lugs
Floor tom	14"x14" - 8 lugs
Shell specifics	Internal and external HPL Melaminc layer + Poplar wood
NOTE	
2 x clamp	
Cymbals and hardware not included	



MODELS

TB UNIKA520FR
TB UNIKA520FB
TB UNIKA520UL
TB UNIKA520VT
TB UNIKA520FN
TB UNIKA520FC



TB UNIKA418

Bassdrum	18"x14" - 8 lugs
Tom Tom	12"x8" - 6 lugs
Snare drum	14"x5,5" - 10 lugs
Floor tom	14"x14" - 8 lugs
Shell specifics	Internal and external HPL Melaminc layer + Poplar wood
NOTE	
1 x clamp	
Cymbals and hardware not included	



MODELS

- TB UNIKA418UL
- TB UNIKA418FR
- TB UNIKA418FB
- TB UNIKA418VT
- TB UNIKA418FN
- TB UNIKA418FC



TB UNIKA416

Bassdrum	16"x14" - 8 lugs
Tom Tom	10"x7" - 6 lugs
Snare drum	13"x6,5" - 8 lugs
Floor tom	13"x13" - 6 lugs
Shell specifics	Internal and external HPL Melaminc layer + Poplar wood
NOTE	
Bass drum lifter included	
1 x clamp	
Cymbals and hardware not included	

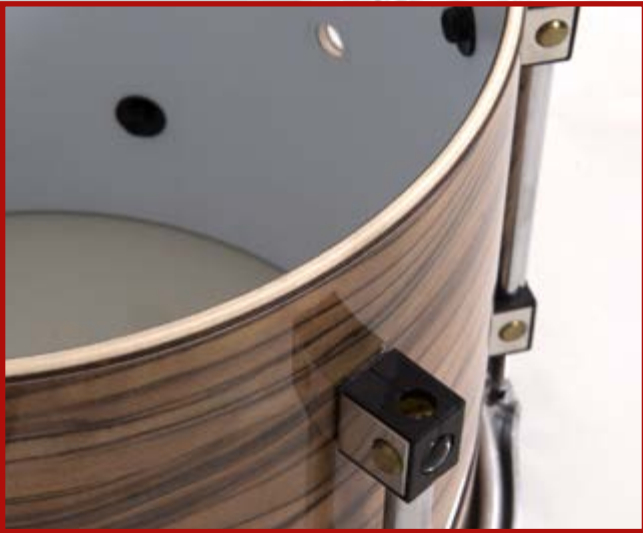


MODELS

- TB UNIKA416VT
- TB UNIKA416UL
- TB UNIKA416FB
- TB UNIKA416FR
- TB UNIKA416FN
- TB UNIKA416FC



UNIKA: TECHNICAL NOTES



THE "HPL" SHELL CONSTRUCTION

The sandwich structure consists of two extra thin, resistant and high-pressure HPL layers, an outer and inner one, connected together at the centre with three alternating wooden 1mm-thick layers made with different types of wood in relation to the desired diameters and sound. This gives the tube mechanical strength and dimensional stability.

The rigid and lightweight structure, its perfect point of contact with the skin (SP = start point) combined with the new lug (ST = strong traction) provide the drums with an extraordinary range of tunings, with timbres ranging from the lowest and hottest at extreme tensions with brilliant and high-pitched sounds. The hard and compact inner HPL layer (which has been used for the first time to manufacture a drum) ensures strong anchoring for the lugs and its waterproofness does not let humidity penetrate, thus preventing the formation of rust on the bolts, and the possible deterioration and ovalisation of the shell.



THE "S.T." LUG (patent pending)

The new "S.T." (strong traction) lug stands out for the innovative design with two tie rods connected with a tube. It encloses in a single structure all the essential elements to guarantee the perfect tension of the skin in a sensitive, fluid and stable manner.

Consisting of:

1. an outer casing made of stainless steel (304): lightweight, mechanically resistant and non-deformable
2. it contains a threaded brass (OT58) pin: ideal to ensure a correct, accurate and long-lasting movement of the screw
3. ABS casing: with anti-vibration functions, pin lock and positioning of the clamping nuts
4. chrome-plated brass connection pipe



FLOOR TOM BRACKET

Chromium-plated die-cast block made with a light alloy with double clamping screw, ensures quick and safe locking of the leg, fitted with soft anti-vibration rubber seal.

The shape and small size makes it easier to position the drum in its case.



BASSDRUM HOOP

Consisting of two layers, an outer and inner HPL one with twelve beech layers at the centre glued together in the same direction with special PU glue to form a circle with strong mechanical properties, non-deformable.



SNARE STRAINER

Cast block, allows for the smooth and accurate adjustment of the snare strainer tension, ensuring stability and resistance over time.

TB T5S22

NEW

Bass drum	22"x16" - 8 lugs
Tom Tom	10"x8" - 6 lugs
Tom Tom	12"x9" - 6 lugs
Snare drum	14"x5,5" - 8 lugs
Floor tom	14"x14" - 6 lugs
Shell specifics	Poplar wood + PVC
Cymbals included	1 Crash 16" + 1 Hi-Hat 14"
200 SERIES HARDWARE INCLUDED	
	Snare drum stand
	Cymbal stand
	Hi hat stand
	Bass drum pedal
	Drum throne
	Drumsticks

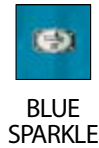


Hardware 200 Series
Cymbals Included



MODELS

TB T5S22GRSK
TB T5S22BSSK
TB T5S22SLSK
TB T5S22BLSK
TB T5S22RSSK



TB T5M22

Bass drum	22"x16" - 8 lugs
Tom Tom	12"x8" - 6 lugs
Tom Tom	13"x9" - 6 lugs
Snare drum	14"x5,5" - 8 lugs
Floor tom	16"x16" - 6 lugs
Shell specifics	Poplar wood + PVC
Cymbals included	1 Crash 16" + 1 Hi-Hat 14"
200 SERIES HARDWARE INCLUDED	
	Snare drum stand
	Cymbal stand
	Hi hat stand
	Bass drum pedal
	Drum throne
	Drumsticks

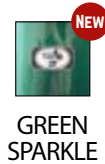


Hardware 200 Series
Cymbals Included



MODELS

TB T5M22BSSK
TB T5M22RSSK
TB T5M22SLSK
TB T5M22BLSK
TB T5M22GRSK



TB T5P20

Bass drum	20"x16" - 8 lugs
Tom Tom	10"x8" - 6 lugs
Tom Tom	12"x9" - 6 lugs
Snare drum	14"x5,5" - 8 lugs
Floor tom	14"x14" - 6 lugs
Shell specifics	Poplar wood + PVC
Cymbals included	1 Crash 16" + 1 Hi-Hat 14"
200 SERIES HARDWARE INCLUDED	
	Snare drum stand
	Cymbal stand
	Hi hat stand
	Bass drum pedal
	Drum throne
	Drumsticks



Hardware 200 Series
Cymbals Included

MODELS

- TB T5P20SLSK
- TB T5P20BSSK
- TB T5P20RSSK
- TB T5P20BLSK
- TB T5P20GRSK



SILVER SPARKLE



BLACK SPARKLE



RED SPARKLE



BLUE SPARKLE



GREEN SPARKLE

TB T5S18

Bass drum	18"x16" - 8 lugs
Tom Tom	10"x8" - 6 lugs
Tom Tom	12"x9" - 6 lugs
Snare drum	14"x5,5" - 8 lugs
Floor tom	14"x14" - 6 lugs
Shell specifics	Poplar wood + PVC
Cymbals included	1 Crash 16" + 1 Hi-Hat 14"
200 SERIES HARDWARE INCLUDED	
	Snare drum stand
	Cymbal stand
	Hi hat stand
	Bass drum pedal
	Drum throne
	Drumsticks



Hardware 200 Series
Cymbals Included

MODELS

- TB T5S18BLSK
- TB T5S18RSSK
- TB T5S18SLSK
- TB T5S18BSSK
- TB T5S18GRSK



BLUE SPARKLE



RED SPARKLE



SILVER SPARKLE



BLACK SPARKLE



GREEN SPARKLE

TB T5S16

Bass drum	16"x16" - 8 lugs
Tom Tom	10"x8" - 6 lugs
Tom Tom	12"x8" - 6 lugs
Snare drum	13"x5,5" - 8 lugs
Floor tom	13"x13" - 6 lugs
Shell specifics	Poplar wood + PVC
Cymbals included	1 Crash 16" + 1 Hi-Hat 14"
200 SERIES HARDWARE INCLUDED	
	Snare drum stand
	Cymbal stand
	Hi hat stand
	Bass drum pedal
	Drum throne
	Drumsticks



Hardware 200 Series
Cymbals Included



MODELS

- TB T5S16RSSK
- TB T5S16BSSK
- TB T5S16SLSK
- TB T5S16BLSK
- TB T5S16GRSK



RED
SPARKLE



BLACK
SPARKLE



SILVER
SPARKLE



BLUE
SPARKLE



GREEN
SPARKLE

T5 SHELL



CODE

- TB T5TT08GRSK
- TB T5TT10GRSK
- TB T5TT11GRSK
- TB T5TT12GRSK
- TB T5TT13GRSK
- TB T5FT14GRSK
- TB T5FT16GRSK
- TB T5SNARE1455GRSK

DESCRIPTION

- TOM 8X8
- TOM 10X8
- TOM 11X8
- TOM 12X9
- TOM 13X9
- FLOOR TOM 14X14
- FLOOR TOM 16X16
- SNARE DRUM 14X5,5

T5 SHELL



CODE	DESCRIPTION
TB T5TT08BSSK	TOM 8X8
TB T5TT10BSSK	TOM 10X8
TB T5TT11BSSK	TOM 11X8
TB T5TT12BSSK	TOM 12X9
TB T5TT13BSSK	TOM 13X9
TB T5FT14BSSK	FLOOR TOM 14X14
TB T5FT16BSSK	FLOOR TOM 16X16
TB T5SNARE1455BSSK	SNARE DRUM 14X5,5



CODE	DESCRIPTION
TB T5TT08RSSK	TOM 8X8
TB T5TT10RSSK	TOM 10X8
TB T5TT11RSSK	TOM 11X8
TB T5TT12RSSK	TOM 12X9
TB T5TT13RSSK	TOM 13X9
TB T5FT14RSSK	FLOOR TOM 14X14
TB T5FT16RSSK	FLOOR TOM 16X16
TB T5SNARE1455RSSK	SNARE DRUM 14X5,5



CODE	DESCRIPTION
TB T5TT08SLSK	TOM 8X8
TB T5TT10SLSK	TOM 10X8
TB T5TT11SLSK	TOM 11X8
TB T5TT12SLSK	TOM 12X9
TB T5TT13SLSK	TOM 13X9
TB T5FT14SLSK	FLOOR TOM 14X14
TB T5FT16SLSK	FLOOR TOM 16X16
TB T5SNARE1455SLSK	SNARE DRUM 14X5,5



CODE	DESCRIPTION
TB T5TT08BLSK	TOM 8X8
TB T5TT10BLSK	TOM 10X8
TB T5TT11BLSK	TOM 11X8
TB T5TT12BLSK	TOM 12X9
TB T5TT13BLSK	TOM 13X9
TB T5FT14BLSK	FLOOR TOM 14X14
TB T5FT16BLSK	FLOOR TOM 16X16
TB T5SNARE1455BLSK	SNARE DRUM 14X5,5

TB FORMULA18

Bass drum	18"x16" - 8 lugs
Tom Tom	10"x8" - 6 lugs
Tom Tom	12"x9" - 6 lugs
Snare drum	14"x5,5" - 8 lugs
Floor tom	14"x14" - 8 lugs
Shell specifics	Birch wood
350 SERIES HARDWARE INCLUDED	
	Snare drum stand
	Cymbal stand
	Hi hat stand
	Bass drum pedal
	Drum throne
	Drumsticks



Hardware 350 Series
Pedal 200 Series



MODELS

TB FORMULA18CG
TB FORMULA18SBK
TB FORMULA18LBR



LIGHT
BROWN



SATIN
BLACK



CHERRY
GLOSS

TB FORMULA20

Bass drum	20"x16" - 10 lugs
Tom Tom	10"x8" - 6 lugs
Tom Tom	12"x9" - 6 lugs
Snare drum	14"x5,5" - 8 lugs
Floor tom	14"x14" - 8 lugs
Shell specifics	Birch wood
350 SERIES HARDWARE INCLUDED	
	Snare drum stand
	Cymbal stand
	Hi hat stand
	Bass drum pedal
	Drum throne
	Drumsticks



Hardware 350 Series
Pedal 200 Series



MODELS

TB FORMULA20CG
TB FORMULA20SBK
TB FORMULA20LBR



SATIN
BLACK



CHERRY
GLOSS



LIGHT
BROWN

TB FORMULA22

Bass drum	22"x16" - 10 lugs
Tom Tom	10"x8" - 6 lugs
Tom Tom	12"x9" - 6 lugs
Snare drum	14"x5,5" - 8 lugs
Floor tom	16"x16" - 8 lugs
Shell specifics	Birch wood
350 SERIES HARDWARE INCLUDED	
	Snare drum stand
	Cymbal stand
	Hi hat stand
	Bass drum pedal
	Drum throne
	Drumsticks



Hardware 350 Series
Pedal 200 Series

MODELS

- TB FORMULA22CG
- TB FORMULA22SBK
- TB FORMULA22LBR



CHERRY GLOSS



SATIN BLACK



LIGHT BROWN



100 SERIES

TB CS100

Straight Cymbal Stand

- Pipes section: 19mm/16mm/13mm



TB CBS100

Boom Cymbal Stand

- Pipes section: 19mm/16mm
- Arm length: 457mm



TB HH100

Hi-Hat

- Pipes section: 19mm/16mm
- Height: 700mm-850mm



TB SS100

Snare Stand

- Fits 12" to 14" drums
- Height: 450mm-550mm
- Pipes section: 19mm/16mm



TB FP100

Drum Pedal

- Bass drum pedal with side springs
- Best in class by price/quality ratio



200 SERIES

TB CS200

Straight Cymbal Stand

- Pipes section: 25mm/19mm/16mm



TB CBS200

Boom Cymbal Stand

- Pipes section: 25mm/19mm
- Arm length: 457mm



TB HH200

Hi-Hat Stand

- Pipes section: 25mm/19mm
- Height: 700mm-900mm



TB SS200

Snare Stand

- Fits 12" to 14" drums
- Height: 480mm-600mm
- Pipes section: 25mm/19mm



TB DT200

Drum Throne

- Height: 480mm-590mm
- Pipes section: 28,6mm
- Seat diameter: 280mm



TB FP200

Drum Pedal

- Bass drum pedal with professional bridge reinforcement under the bar



350 SERIES

TB CBS350

Boom Cymbal Stand

- Pipes section: 25mm/22mm
- Arm length: 457m



TB HH350

Hi-Hat Stand

- Pipes section: 25mm/22mm
- Height: 700mm-850mm



TB DT350

Drum Throne

- Height: 500mm-630mm
- Pipes section: 28,6mm
- Seat diameter: 320mm



TB SS350

Snare Stand

- Fits 12' to 14' drums
- Height: 480mm-600mm
- Pipes section: 25mm/22mm



600 SERIES

TB CBS600

Boom Cymbal Stand

- Pipes section: 28,6mm/25mm/ 25mm
- Arm length: 580mm with conterweight



TB HH600

Hi-Hat Stand

- Pipes section: 28,6mm/25mm
- Height: 700mm-950mm



TB SS600

Snare Stand

- Fits 12' to 14' drums
- Height: 470mm-800mm
- Pipes section: 28,6mm/25mm



TB DT600

Drum Throne

- Moto style ergonomic seat
- Height: 520mm-650mm
- Pipes section: 28,6mm



TB FP600

Drum Pedal

- Professional bass drum pedal with reinforcement plate and bridge reinforcement under the bar
- Bag included



TB FDP600

Drum Pedal

- Professional bass drum double pedal with reinforcement plate and bridge reinforcement under the bar
- Additional spring on left pedal gives better response
- Bag included





TAMBURO
is a brand of

PROEL SPA
(Worldwide Headquarters)
Via alla Ruenia, 37/43
64027 Sant'Omero (TE) - ITALY
Tel. +39 0861 81241
Fax +39 0861 887862
P.I. 00778590679
N.Reg.AEE IT 0802000002762

www.tamburodrums.com