



We
Listen
To **YOU**

PRODUCT LINE
2018



All the TOPP PRO production is based on a solid and technological know-how. A continuous evolution that aims to create performing and accessible audio solutions, dedicated to all music lovers.

#welistentoyou tells about our desire to listen to all those who - like you, like us - love, play and live with music. The great attention to the digital world is the result of this love and this desire to listen, to be protagonist also in this market segment.

Our goal? Being recognized as a reliable brand.

To achieve it, we are engaged on several fronts. We have invested resources and energy in Research&Development. We have created a capillary distribution network and above all, thanks to Proel's technic and logistic support, we are committed to ensuring a careful monitoring of the products and a high quality Customer Care Service.

This new catalog attests this passionate impetus towards the future and towards you.

Good exploration!

Tutta la produzione di TOPP PRO si basa su solido know how tecnologico. Una evoluzione continua che punta a creare soluzioni audio performanti e accessibili, dedicate a tutti gli amanti della musica.

#welistentoyou racconta la nostra voglia di ascoltare tutti quelli che - come te, come noi - amano, suonano e vivono di musica. La grande attenzione al mondo digitale è frutto di questo amore e di questa voglia di ascoltare, per essere protagonisti anche in questo segmento di mercato.

Il nostro obiettivo? Essere riconosciuti come brand affidabile.

Per raggiungerlo, ci siamo impegnati su più fronti. Abbiamo investito risorse ed energie nella Ricerca & Sviluppo. Abbiamo creato una rete distributiva capillare e soprattutto, grazie al supporto tecnico-logistico di Proel, ci siamo impegnati per assicurare un attento monitoraggio dei prodotti e un Servizio di Customer Care di alta qualità.

Questo nuovo catalogo testimonia questo slancio appassionato verso il futuro e verso di te.

Buona esplorazione!





We
Listen
To You



SUMMARY

| | |
|----|------------------|
| 7 | MIXER |
| 8 | DIGITAL MIXER |
| 10 | MX SERIES |
| 16 | SPEAKERS |
| 17 | KS SERIES |
| 22 | TPSI SERIES |
| 25 | TPS MA SERIES |
| 27 | MAXX SERIES |
| 29 | X CS SERIES |
| 30 | X SERIES |
| 33 | AVANTI SERIES |
| 34 | SOHO SERIES |
| 36 | TPS 16 SERIES |
| 38 | AMPLIFIERS |
| 39 | TRX SERIES |
| 41 | TMA SERIES |
| 43 | ELECTRONICS |
| 48 | PUBLIC ADDRESS |
| 55 | ASSEMBLED CABLES |
| 58 | ACCESSORIES |



MIXER

TP T2208

T2208 combines the best of what an LCD touch screen can offer a digital mixer and a familiar & intuitive interface for functions where speed & precision are required... for those LIVE instances when nothing beats reaching for a real fader or a knob. With its powerful digital DSP engine, easy to navigate software application & uncompromising hands-on control, T2208 offers a complete software/hardware integrated solution for real-world LIVE mixing applications!

T2208 unisce il meglio che un mixer digitale con Touch Screen può offrire con un'interfaccia semplice ed intuitiva, in modo da garantire le massime performance in termini di velocità e precisione per tutte le applicazioni live in cui nulla può sostituire un vero potenziometro o fader. Grazie al suo potente processore, ad una navigazione familiare e ad un controllo completo delle funzioni in tempo reale, il T2208 rappresenta una soluzione integrata hardware e software completa per tutte le applicazioni Live!

- 22-input, 12-bus Digital Console
- 16 Premium Mic Preamplifiers
- 2 line-level inputs
- 8 Aux outputs and 2 internal sends
- 2-track USB record/play interface
- 100mm motorized fader
- 7" LCD touch screen
- 32 DSP Channels, each with:
 - Gate
 - Compressor
 - 4-Bands Parametric EQ
- 2 digital FXs
- 31-Bands graphic EQ on each output
- Up to 300ms Time Delay on all outputs
- 6 DCA fader groups
- iPad App Remote Control
- Expansion for optional modules:
 - 32-ch multi-track USB audio recording module
 - Dante module

487 mm x 357 mm x 141 mm · 7.78 Kg



TP ETHERNET-EXP



TP WIFI-MODULE

TP T32USB-EXP



TP T-DANTE





TP CASET2208PT

NEW



Professional Flight case for T2208 Digital Mixer

| Model Active | TP T2208 |
|------------------------------------|----------------------------|
| Microphone input | Electronically balanced |
| Frequency Response to Main Output | 20Hz~20KHz at 0dBu ±1.5dB |
| Distortion (THD&N) to Main Output | <0.01% at 0dBu 1KHz |
| SNR (Signal to Noise Ratio) | 107dB |
| Maximum Input Level | +20dBu |
| Phantom Power (+/-3V) | +48VDC |
| Line input | Unbalanced |
| Frequency Response to Main Output | 20Hz~20KHz at 0dBu ±1.5dB |
| Distortion(THD&N) to Main Output | <0.01% at 0dBu 1KHz |
| Gain | -15dBu~+35dBu |
| Maximum Input Level (Gain at 0dBu) | +20dBu |
| AUX1~2 input | Balanced (2 stereo pair) |
| Frequency Response to Main Output | 20Hz~20KHz at +0dBu ±1.5dB |
| Distortion (THD&N) to Main Output | <0.01% at 0dBu 1KHz |
| Gain | -∞ to +10dBu |
| Maximum Input Level | +20dBu |
| Maximum Output Level | +20dBu |
| AUX1~8 Outputs | +20dBu |
| Tape Outputs | +14dBu |
| Control Room Outputs | +20dBu |
| System Crosstalk | |
| Input to Output(at +0dBu 1KHz) | -88dBu |
| Adjacent Channels (at +0dBu 1KHz) | -85dBu |
| Noise(Bus noise) | -91dBu |
| EQ | |
| Low (LowPass or LowShelf) | 21Hz~19.2KHz +/- 24dB |
| Low Mid | 21Hz~19.2KHz +/- 24dB |
| High Mid | 21Hz~19.2KHz +/- 24dB |
| High (HighPass or HighShelf) | 21Hz~19.2KHz +/- 24dB |
| Digital Audio | |
| ADC Dynamic Range | 114dB |
| DAC Dynamic Range | 114dB |
| Internal Processor | 32-bit , floating point |
| ADC,DAC bit depth | 24bit |

TP MX1222FX

NEW

- 6 mono inputs with gold plated XLR and Balanced TRS jack
- Stereo inputs with Balanced TRS jack
- 3 band EQ with parametric mid-frequencies on all mono inputs and 75 Hz lo cut
- 2 Aux sends (Aux 1 Pre-Post switchable)
- Mute, Solo, 2-Track, Control Room, Phantom 48V functions
- 2 Subgroups
- 24 bits internal EFX processor
- 12 Faders
- Slot for MP3 modules (TP TACMP3T-TP TACMP3R)

380 mm x 383 mm x 90 mm · 2.5 Kg

digital fx



TP TACMP3T

NEW



- USB audio player
- Displays track number on display
- Repeat function

NEW

TP TACMP3R



- USB audio player / MP3 recorder
- Displays track number on display
- Repeat function



TP MX12FXV2

- 12 Input Mixer
- 4 MIC/Line inputs
- 4 Stereo Line Inputs
- RCA Tape inputs/outputs
- 3-band EQ
- 1 AUX send per channel
- Phantom Power
- Headphone output
- Control Room Out
- 24-bit Digital FX Processor / 100 Presets

41 mm x 272 mm x 259 mm · 1.8 Kg



TP MX6FXV2

- 6 Input Mixer
- 2 MIC/Line inputs
- 2 Stereo Line Inputs
- RCA Tape inputs/outputs
- 3-band EQ
- 1 AUX send per channel
- Phantom Power
- Headphone output
- Control Room Out
- 24-bit Digital FX Processor / 100 Presets

185 mm x 230 mm x 55 mm · 1.2 Kg



TP MX6V2

- 6 Input Mixer
- 2 MIC/Line inputs
- 2 Stereo Line Inputs
- RCA Tape inputs/outputs
- 3-band EQ
- 1 AUX send per channel
- Phantom Power
- Headphone output
- Control Room Out

185 mm x 230 mm x 55 mm · 1.2 Kg



TP MX5V2

- 5 Input Mixer
- 1 MIC/Line input
- 2 Stereo Line Inputs
- RCA Tape inputs/outputs
- 2-band EQ
- Headphone output

41 mm x 133 mm x 203 mm · 0.7 Kg





TP MX3BT

- 1 Precision mono input MIC/Line with combo jack, Stereo Input
- Monitor Output
- RCA Tape inputs/outputs
- 2-band EQ
- Bluetooth Player Function
- USB I/O

98 mm x 136 mm x 34 mm · 0.48 Kg



TP MX3



- 1 Precision mono input MIC/Line with combo jack, Stereo Input
- Monitor Output
- RCA Tape inputs/outputs
- 2-band EQ
- USB I/O

98 mm x 136 mm x 34 mm · 0.48 Kg





#WeListenToYou



SPEAKERS

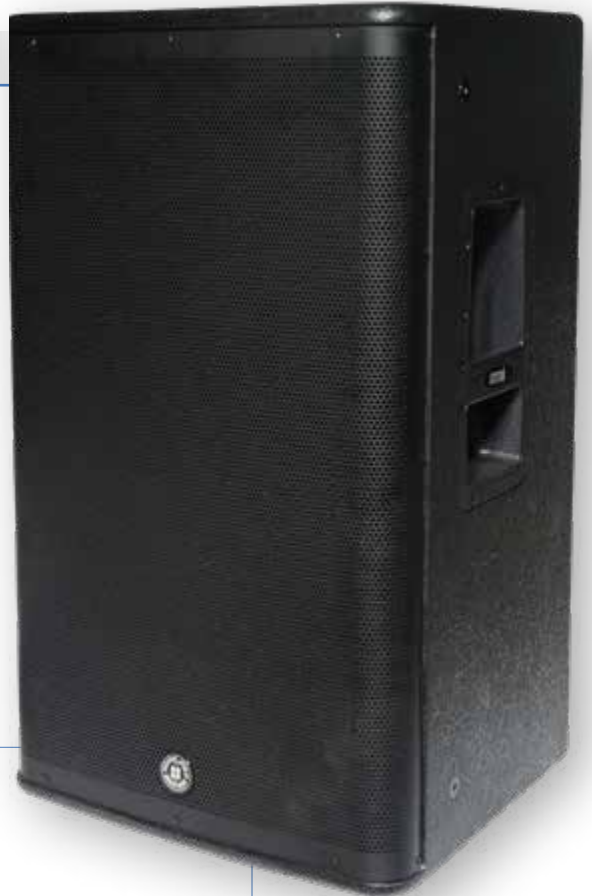




TP KSCS15A

- 15" Powered speaker
- RSM Power: 500 + 500 W
- Peak Power: 4000 W
- SPL MAX: 130 dB
- TRANSDUCER LOW:
 - 15" Woofer 3" Voice Coil
- TRANSDUCER HIGH:
 - 1" Driver 1.75" Voice Coil CELESTION
- DSP enhanced bass response
- SLOT for I-PAD DSP control modules
(TP CSWM – TP CSWSL)

700 mm x 430 mm x 386 mm · 26.16 kg



CELESTION
Driven



TP KSCS12A

- 12" Powered speaker
- RSM Power: 500 + 500 W
- Peak Power: 4000 W
- SPL MAX: 128 dB
- TRANSDUCER LOW:
 - 12" Woofer 3" Voice Coil
- TRANSDUCER HIGH:
 - 1" Driver 1.75" Voice Coil CELESTION
- DSP enhanced bass response
- SLOT for I-PAD DSP control modules
(TP WSLM – TP WSLSL)

625 mm x 380 mm x 350 mm · 23.18 kg

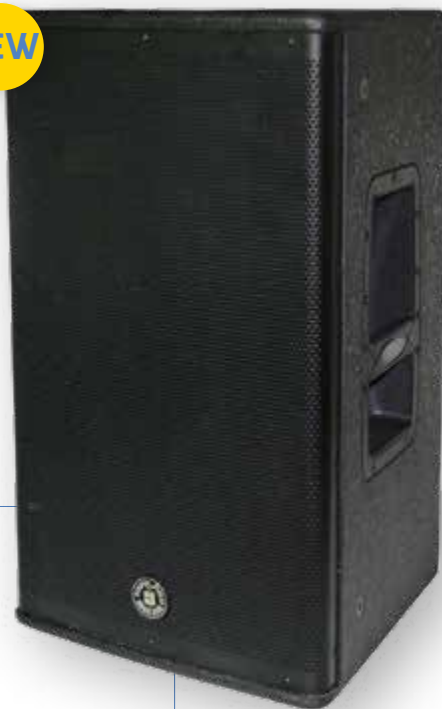
CELESTION
Driven

TP KSCS10A

NEW

- 10" Powered speaker
- RSM Power: 650 + 150 W
- Peak Power: 3200 W
- SPL MAX: 126 dB
- TRANSDUCER LOW:
 - 10" Woofer 2,5" Voice Coil
- TRANSDUCER HIGH:
 - 1" Driver 1.75" Voice Coil CELESTION
- DSP enhanced bass response
- SLOT for I-PAD DSP control modules (TP CSWM – TP CSWSL)

583 mm x 333 mm x 325 mm · 19.72 kg



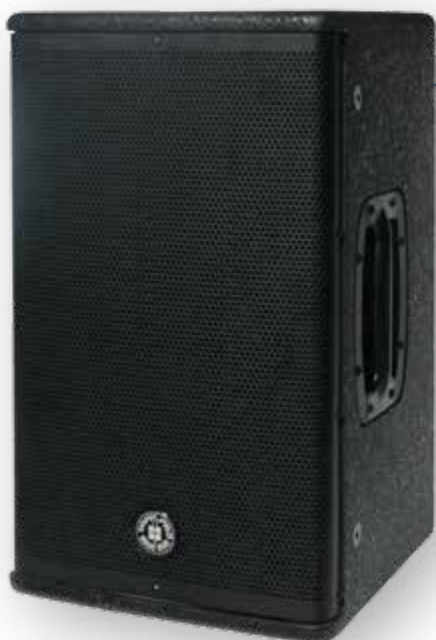
CELESTION
Driven

TP KSCS8A

NEW

- 8" Powered speaker
- RSM Power: 650 + 150 W
- Peak Power: 3200 W
- SPL MAX: 124 dB
- TRANSDUCER LOW:
 - 8" Woofer 2" Voice Coil
- TRANSDUCER HIGH:
 - 1" Driver 1.75" Voice Coil CELESTION
- DSP enhanced bass response
- SLOT for I-PAD DSP control modules (TP WSLM – TP WSLSL)

460 mm x 276 mm x 300 mm · 15.93 kg



CELESTION
Driven



TP CSWM

NEW

TP CSWSL



(Master I-PAD Control Module)

(Sleeve I-PAD Control Module)



- Support 802.11 b/b/n wireless standard
- Support multi client-sides connection
 - Over 30 m distance range

| Model Active | TP KSCS15A | TP KSCS12A |
|---------------------------|--|--|
| System Type | 2-Way Active Vented Speaker with DSP | 2-Way Active Vented Speaker with DSP |
| Transducer Low | 15" Woofer, 3" voice coil | 12" Woofer, 3" voice coil |
| Transducer Driver | 1" Compression Driver, 1.75" Voice Coil CELESTION | 1" Compression Driver, 1.75" Voice Coil CELESTIO |
| Frequency Response (-6dB) | 48Hz - 20KHz | 50Hz - 20KHz |
| Crossover Frequency | At 1.5K Hz with 24dB filter slope, Linkwitz-Riley Type | At 1.6K Hz with 24dB filter slope, Linkwitz-Riley Type |
| Max SPL | 130dB Max. | 128dB Max. |
| Power Rating | RMS Power: 500+500W - PEAK Power: 4000W | RMS Power: 500+500W - PEAK Power: 4000W |
| Input Connector | Line / Mic - Combo / Link-XLR | Line / Mic - Combo / Link-XLR |
| DSP Presets | Flat / Loudness / User (Customer Sound) | Flat / Loudness / User (Customer Sound) |
| Line Input | Combo Connector -6dBu | Combo Connector -6dBu |
| External Controls | Volume Control / Power ON with Green LED / Clip Limiter with Red LED / Ground Lift / Switch for Input Sens / Switch On for front Led | Volume Control / Power ON with Green LED / Clip Limiter with Red LED / Ground Lift / Switch for Input Sens / Switch On for front Led |
| Electronic Protections | Thermal / Convection-Fan / Overload Digital Lim. / Compressor | Thermal / Convection-Fan / Overload Digital Lim. / Compressor |
| Power Supply | 115V/230V Switchable | 115V/230V Switchable |
| Enclosure Construction | Plywood cabinet, resistant black paint, metal grille with black foam, rubber feet, plastic handles | Plywood cabinet, resistant black paint, metal grille with black foam, rubber feet, plastic handles |
| Mounting | One metal standard pole-mount, 12xM10 Flying Points | One metal standard pole-mount, 12xM10 Flying Points |
| Dimensions (HxWxD) | 700 x 430 x 386mm / 27.6" x 16.9" x 15.2" | 625 x 380 x 350mm / 24.6" x 15" x 13.8" |
| Net Weight | 26.16kg / 57.7lbs | 23.18kg / 51.1lbs |

| Model Active | TP KSCS10A | TP KSCS8A |
|---------------------------|--|--|
| System Type | 2-Way Active Vented Speaker with DSP | 2-Way Active Vented Speaker with DSP |
| Transducer Low | 10" Woofer, 2.5" voice coil | 8" Woofer, 2" voice coil |
| Transducer Driver | 1" Compression Driver, 1.75" Voice Coil CELESTION | 1" Compression Driver, 1.75" Voice Coil CELESTIO |
| Frequency Response (-6dB) | 55Hz - 20KHz | 60Hz - 20KHz |
| Crossover Frequency | At 1.8K Hz with 24dB filter slope, Linkwitz-Riley Type | At 1.8K Hz with 24dB filter slope, Linkwitz-Riley Type |
| Max SPL | 126dB Max. | 124dB Max. |
| Power Rating | RMS Power: 500+500W - PEAK Power: 4000W | RMS Power: 400+400W - PEAK Power: 3200W |
| Input Connector | Line / Mic - Combo / Link-XLR | Line / Mic - Combo / Link-XLR |
| DSP Presets | Flat / Loudness / User (Customer Sound) | Flat / Loudness / User (Customer Sound) |
| Line Input | Combo Connector -6dBu | Combo Connector -6dBu |
| External Controls | Volume Control / Power ON with Green LED / Clip Limiter with Red LED / Ground Lift / Switch for Input Sens / Switch On for front Led | Volume Control / Power ON with Green LED / Clip Limiter with Red LED / Ground Lift / Switch for Input Sens / Switch On for front Led |
| Electronic Protections | Thermal / Convection-Fan / Overload Digital Lim. / Compressor | Thermal / Convection-Fan / Overload Digital Lim. / Compressor |
| Power Supply | 115V/230V Switchable | 115V/230V Switchable |
| Enclosure Construction | Plywood cabinet, resistant black paint, metal grille with black foam, rubber feet, plastic handles | Plywood cabinet, resistant black paint, metal grille with black foam, rubber feet, plastic handles |
| Mounting | One metal standard pole-mount, 12xM10 Flying Points | One metal standard pole-mount, 12xM10 Flying Points |
| Dimensions (HxWxD) | 583 x 333.2 x 325mm / 22.95" x 13.12" x 12.8" | 460 x 276.4 x 300mm / 18.11" x 10.89" x 11.81" |
| Net Weight | 19.72kg / 43.49lbs | 15.93kg / 35.05lbs |

TP KS18ASUB

- RMS Power: 1000 W
- Peak Power: 4000 W
- TRANSDUCER LOW:
18" Woofer 3" Sandwich Voice Coil
with long excursion
- MAX SPL: 129 dB

535 mm x 661 mm x 515.5 mm · 26.16 kg



TP KS15ASUB

- RMS Power: 1000 W
- Peak Power: 4000 W
- TRANSDUCER LOW:
15" Woofer 3" Sandwich Voice Coil
with long excursion
- MAX SPL: 128 dB

450 mm x 580 mm x 485 mm · 24.95 kg





| Model Active | TP KS18ASUB | TP KS15ASUB |
|---------------------------|---|---|
| System Type | Active Bass-reflex Subwoofer | Active Bass-reflex Subwoofer |
| Power Rating | RMS Power: 1000W - PEAK Power: 4000W | RMS Power: 1000W - PEAK Power: 4000W |
| Transducer Low | 18" Woofer, 3" Sandwich Voice Coil with long excursion | 15" Woofer, 3" Sandwich Voice Coil with long excursion |
| Max SPL | 129dB Max. | 128dB Max. |
| Active Crossover | BandPass type 12dB/oct. under analog processor | BandPass type 12dB/oct. under analog processor |
| Frequency Response (-6dB) | 40Hz - 120Hz under analog processor | 45Hz - 120Hz under analog processor |
| Input Connector | In-Left / Mono (COMBO) Right (XLR-F) / Out-Left / Mono Right (XLR-M) / Link-Left / Mono-Right (XLR-M) Balanced (15KOhms) | In-Left / Mono (COMBO) Right (XLR-F) / Out-Left / Mono Right (XLR-M) / Link-Left / Mono-Right (XLR-M) Balanced (15KOhms) |
| External Controls | Volume Control / Phase Switch / HPF-80Hz for L-R Satellite or By Pass / Power ON with Green LED / Clip Limiter with Red LED / Ground Lift | Volume Control / Phase Switch / HPF-80Hz for L-R Satellite or By Pass / Power ON with Green LED / Clip Limiter with Red LED / Ground Lift |
| Electronic Protections | Thermal / Convection-Fan / Overload / Lim. / Compressor | Thermal / Convection-Fan / Overload / Lim. / Compressor |
| Power Supply | 110-120V~50/60Hz or 220-240V~50/60Hz Switchable | 110-120V~50/60Hz or 220-240V~50/60Hz Switchable |
| Enclosure Construction | Plywood cabinet, metal grille, rubber foot | Plywood cabinet, metal grille, rubber foot |
| Mounting | One metal standard pole-mount | One metal standard pole-mount |
| Dimensions (HxWxD) | 535 x 661x 515.5mm (21.06" x 26.02 x 20.3") | 450 x 580 x 485mm (17.72" x 22.84 x 19.1") |



TP TPSI15HA

- RMS Power: 220 + 30 W
- Peak Power: 1000 W
- TRANSDUCER LOW:
15" Woofer 2" Voice Coil
- TRANSDUCER HIGH:
1" Driver 1" Voice Coil

522 mm × 486 mm × 736 mm · 25.1 kg



TP TPSI12HA

- RMS Power: 200 + 30W
- Peak Power: 920W
- TRANSDUCER LOW:
12" Woofer 2" Voice Coil
- TRANSDUCER HIGH:
1" Driver 1" Voice Coil

449 mm × 438 mm × 653 mm · 22.1 kg





TP TPSI10HA

- RMS Power: 170 + 25 W
- Peak Power: 780W
- TRANSDUCER LOW:
10" Woofer 2" Voice Coil
- TRANSDUCER HIGH:
1" Driver 1" Voice Coil

418 mm x 408 mm x 631 mm · 18,5 Kg



TP TPSI8HA

- RMS Power: 150 + 25 W
- Peak Power: 700 W
- TRANSDUCER LOW:
8" Woofer 1.5" Voice Coil
- TRANSDUCER HIGH:
1" Driver 1" Voice Coil

366 mm x 358 mm x 548 mm · 15,3 Kg



| Model Active | TP TPS115HA | TP TPS112HA | TP TPS110HA | TP TPS18HA |
|---------------------------|--|--|--|--|
| System Type | 2-Way Vented Cabinet | 2-Way Vented Cabinet | 2-Way Vented Cabinet | 2-Way Vented Cabinet |
| Transducer Low | 15" Woofer - 2" Voice Coil | 12" Woofer - 2" Voice Coil | 10" Woofer - 2" Voice Coil | 8" Woofer - 1.5" Voice Coil |
| Transducer Driver | 1" Driver - 1" Voice Coil | 1" Driver - 1" Voice Coil | 1" Driver - 1" Voice Coil | 1" Driver - 1" Voice Coil |
| Frequency Response (-6dB) | 50Hz~20KHz (-6dB) | 55Hz~20KHz (-6dB) | 58Hz~20KHz (-6dB) | 68Hz~20KHz (-6dB) |
| Horn Coverage | 50°x 50° | 50°x 50° | 50°x 50° | 50°x 50° |
| Max SPL | 123.5dB (Max) | 122.2dB (Max) | 120dB (Max) | 119.5dB (Max) |
| Power Rating | RMS Power: 220+30W PEAK Power: 1000W | RMS Power: 200+30W PEAK Power: 920W | RMS Power: 170+25W PEAK Power: 780W | RMS Power: 150+25W PEAK Power: 700W |
| Input Connector | 2 × SPK4 | 2 × SPK4 | 2 x SPK4 / 2 × NL4 | 2 × SPK4 |
| Line Input | 5dBu ±1dBu | 5dBu ±1dBu | 5dBu ±1dBu | 5dBu ±1dBu |
| Input Impedance | Line 15kO input | Line 15kO input | Line 15kO input | Line 15kO input |
| External Controls | Volume, Master switch / AC Select / Power LED / CLIP LED | Volume, Master switch / AC Select / Power LED / CLIP LED | Volume, Master switch / AC Select / Power LED / CLIP LED | Volume, Master switch / AC Select / Power LED / CLIP LED |
| Power Supply | 110-120V~60Hz / 220-240V~50/60Hz | 110-120V~60Hz / 220-240V~50/60Hz | 110-120V~60Hz / 220-240V~50/60Hz | 110-120V~60Hz / 220-240V~50/60Hz |
| Enclosure Construction | Plywood cabinet, resistant black paint, metal grille, rubber feet, two handles | Plywood cabinet, resistant black paint, metal grille, rubber feet, two handles | Plywood cabinet, resistant black paint, metal grille, rubber feet, two handles | Plywood cabinet, resistant black paint, metal grille, rubber feet, two handles |





TP TPS12MA

- RMS Power: 350 + 65 W
- Peak Power: 1660W
- TRANSDUCER LOW:
 - 12" Woofer
 - 2" Voice Coil with Ventilation
- TRANSDUCER HIGH:
 - 1" Neodymium Driver
- MAX SPL: 121 dB

488 mm x 442 mm x 469 mm · 14.15 Kg



TP TPS10MA

- RMS Power: 350 + 65 W
- Peak Power: 1660 W
- TRANSDUCER LOW:
 - 10" Woofer
 - 2" Voice Coil with Ventilation
- TRANSDUCER HIGH:
 - 1" Neodymium Driver
- MAX SPL: 120 dB

448 mm x 390 mm x 437 mm · 11.61 Kg



| Model Active | TP TPS12MA | TP TPS10MA |
|-----------------------|--|--|
| System Type | 2-Way Bi-Amp Active Monitor Speaker, with Preset | 2-Way Bi-Amp Active Monitor Speaker, with Preset |
| Power Rating | RMS Power: 350+65W - PEAK Power: 1660W | RMS Power: 350+65W - PEAK Power: 1660W |
| Frequency Response | 60Hz - 20KHz (-6dB) | 60Hz - 20KHz (-6dB) |
| Max SPL | 121dB Max. | 121dB Max. |
| Low Frequency | 12" (305mm) / 2" Voice Coil, with ventilation | 12" (305mm) / 2" Voice Coil, with ventilation |
| High Frequency | 1" Driver / 1" Voice Coil | 1" Driver / 1" Voice Coil |
| Horn Coverage (H x V) | 70° x 70° | 70° x 70° |
| Enclosure | Trapezoidal Shape, MDF WOOD Black Paint, Handle, metal grille, rubber foot | Trapezoidal Shape, MDF WOOD Black Paint, Handle, metal grille, rubber foot |
| Input connectors | Input with Combo / Link with XLR | Input with Combo / Link with XLR |
| External control | Volume Control / Power ON Volume Control / Power ON with Green LED / Clip Limiter with Red LED / Ground Lift | Volume Control / Power ON Volume Control / Power ON with Green LED / Clip Limiter with Red LED / Ground Lift |
| Input Impedance: | 30 KO Balanced / 15KO Unbalanced | 30 KO Balanced / 15KO Unbalanced |
| Preset | FOH / Monitor | FOH / Monitor |
| Input Sensitivity | Line - 6dBu | Line - 6dBu |
| Protection Low-High | Analog Limiter | Analog Limiter |
| Indicator | Power / Clip | Power / Clip |
| Power Supply | 115V-60Hz / 230V-50Hz Switchable | 115V-60Hz / 230V-50Hz Switchable |





TP MAXX15ASUB

- RMS Power: 300 W
- Peak Power: 1200 W
- TRANSDUCER LOW:
15" Woofer 2,5" Voice Coil with Ventilation
- MAX SPL: 124,8 dB

676 mm × 581 mm × 544 mm · 26,57 kg



TP MAXX12ASUB

- RMS Power: 300 W
- Peak Power: 1200 W
- TRANSDUCER LOW:
12" Woofer 2,5" Voice Coil with Ventilation
- MAX SPL: 123,8 dB

629 mm × 579 mm × 474 mm · 24 kg



TP MAXX10ASUB

NEW

- RMS Power: 300 W
- Peak Power: 1200 W
- TRANSDUCER LOW:
10" Woofer 2.5" Voice Coil with Ventilation
- MAX SPL: 121,8 dB

536 mm × 501 mm × 391 mm · 17,16 kg



| Model Active | TP MAXX15ASUB | TP MAXX12ASUB | TP MAXX10ASUB |
|------------------------|--|--|--|
| System Type | Active Subwoofer Speaker Cabinet | Active Subwoofer Speaker Cabinet | Active Subwoofer Speaker Cabinet |
| Transducer Low | 15" woofer - 2.5" voice coil with ventilation | 12" woofer - 2.5" voice coil with ventilation | 10" woofer - 2.5" voice coil with ventilation |
| Frequency Response | 47Hz-125Hz (-6dB) | 47Hz-125Hz (-6dB) | 50Hz-120Hz (-6dB) |
| Active Crossover: | HPF 80Hz under analog processor | HPF 80Hz under analog processor | HPF 80Hz under analog processor |
| Max SPL | 124.8dB | 123.8dB | 121.8dB Max |
| Power Rating | RMS Power: 300 W - PEAK Power: 1200 W | RMS Power: 300 W - PEAK Power: 1200 W | RMS Power: 300 W - PEAK Power: 1200 W |
| Input Connector | L-R (COMBO / XLR-F) / L-R Link (2 - XLR - M) / L-R Output (2 - XLR - M) Balanced (15k Ohms) | L-R (COMBO / XLR-F) / L-R Link (2 - XLR - M) / L-R Output (2 - XLR - M) Balanced (15k Ohms) | L-R (COMBO / XLR-F) / L-R Link (2 - XLR - M) / L-R Output (2 - XLR - M) Balanced (15k Ohms) |
| Input Level: | L-R Line Input 0dBu | L-R Line Input 0dBu | L-R Line Input 0dBu |
| External Controls | External Controls Volume Control / Power on with Green LED / Clip Limiter with RED LED / Ground Lift / Phase Switch / HPF 100Hz Bypass | External Controls Volume Control / Power on with Green LED / Clip Limiter with RED LED / Ground Lift / Phase Switch / HPF 100Hz Bypass | External Controls Volume Control / Power on with Green LED / Clip Limiter with RED LED / Ground Lift / Phase Switch / HPF 100Hz Bypass |
| Power Supply | 110-120V / 220-240V 50/60Hz | 110-120V / 220-240V 50/60Hz | 110-120V / 220-240V 50/60Hz |
| Enclosure Construction | Painted Plywood cabinet / Black Metal Grille Protection / Rubber feet | Painted Plywood cabinet / Black Metal Grille Protection / Rubber feet | Painted Plywood cabinet / Black Metal Grille Protection / Rubber feet |
| Dimensions (HxWxD) | 67.6 x 58.1 x 54.4 | 62.9 x 57.9 x 47.4 | 53.6 x 50.1 x 39.1 |
| Weight (kg) | 26.57 | 24 | 17.16 |



TP XCS15A

- RMS Power: 350 + 65 W
- Peak Power: 1600 W
- TRANSDUCER LOW:
15" Woofer 2" Voice Coil
- TRANSDUCER HIGH:
1" Neodymium Driver 1" Voice Coil
DSP Audio Processor
- SLOT for I-PAD DSP control modules
(TP CSWM – TP CSWSL)
- SLOT for MP3 Player module (TP TACMP3T)

468 mm x 468 mm x 708 mm · 14,71 Kg



TP XCS12A

- RMS Power: 350 + 65 W
- Peak Power: 1600 W
- TRANSDUCER LOW:
12" Woofer 2" Voice Coil
- TRANSDUCER HIGH:
1" Neodymium Driver 1" Voice Coil
DSP Audio Processor
- SLOT for I-PAD DSP control modules
(TP CSWM – TP CSWSL)
- SLOT for MP3 Player module (TP TACMP3T)

458 mm x 411 mm x 683 mm · 14,62 Kg



TP X15A

- RMS Power: 150 + 50 W
- Peak Power: 800 W
- TRANSDUCER LOW:
15" Woofer 2" Voice Coil
- TRANSDUCER HIGH:
1" Neodymium Driver 1" Voice Coil

468 mm x 468 mm x 708 mm · 14,5 Kg



TP X12A

- RMS Power: 150 + 50 W
- Peak Power: 800 W
- TRANSDUCER LOW:
12" Woofer 2" Voice Coil
- TRANSDUCER HIGH:
1" Neodymium Driver 1" Voice Coil

458 mm x 411 mm x 683 mm · 13,2 Kg





TP X10A

- RMS Power: 90 + 30 W
- Peak Power: 480 W
- TRANSDUCER LOW:
10" Woofer 1.5" Voice Coil
- TRANSDUCER HIGH:
1" Ferrite Driver 1" Voice Coil

361 mm x 341 mm x 518 mm · 6,92 Kg



TP X8A

- RMS Power: 90 + 30 W
- Peak Power: 480 W
- TRANSDUCER LOW:
8" Woofer 1.5" Voice Coil
- TRANSDUCER HIGH:
1" Ferrite Driver 1" Voice Coil

346 mm x 321 mm x 478 mm · 5,4 Kg



| Model Active | TP XCS15A | TP XCS12A |
|------------------------|--|--|
| System Type | 2-Way Active Vented Speaker / Bi-Amp. With DSP processor | 2-Way Active Vented Speaker / Bi-Amp. With DSP processor |
| Transducer Low | 15" Woofer, 2" voice coil | 12" Woofer, 2" voice coil |
| Transducer Driver | 1" Compression Driver, 1" Voice Coil | 1" Compression Driver, 1" Voice Coil |
| Horn Coverage H° x V° | 90°H x 60°V | 90°H x 60°V |
| Frequency Response | 45Hz-20KHz (-6dB) | 50Hz-20KHz (-6dB) |
| Crossover Frequency | 1.6KHz - DSP Processor | 1.6KHz - DSP Processor |
| Max SPL | 126dB Max. | 125dB Max. |
| AMP Power Output | RMS Power: 350+65W - PEAK Power: 1600W | RMS Power: 350+65W - PEAK Power: 1600W |
| Connector | Line/Mic With Combo & Link With XLR | Line/Mic With Combo & Link With XLR |
| External Controls | Volume Control / Lin & Mic Switch / Preset Switch / Power on with Green LED / Clip Limiter with Red LED / Ground Lift. | Volume Control / Lin & Mic Switch / Preset Switch / Power on with Green LED / Clip Limiter with Red LED / Ground Lift. |
| Digital Presets | FLAT -MUSIC-USER | FLAT -MUSIC-USER |
| Electronic Protections | Thermal / Overload / Digital Limiter / Compressor | Thermal / Overload / Digital Limiter / Compressor |
| Power Supply | 110-120V~50/60Hz or 220V-240V~50/60Hz Switchable | 110-120V~50/60Hz or 220V-240V~50/60Hz Switchable |
| Enclosure Construction | Plastic cabinet, Trapezoidal & Monitor Shape, Metal Grille, Rubber Feet, 3* Handle (Top and sides) | Plastic cabinet, Trapezoidal & Monitor Shape, Metal Grille, Rubber Feet, 3* Handle (Top and sides) |
| Mounting | 36mm standard pole-mount | 36mm standard pole-mount |

| Model Active | TP X15A | TP X12A | TP X10A | TP X8A |
|---------------------------|--|--|--|--|
| System Type | 2-Way Active Vented Speaker | 2-Way Active Vented Speaker | 2-Way Active Vented Speaker | 2-Way Active Vented Speaker |
| Transducer Low | 15" Woofer, 2" voice coil | 12" Woofer, 2" voice coil | 10" Woofer, 1.5" voice coil | 8" Woofer, 1.5" voice coil |
| Transducer Driver | 1" NEO Driver, 1" Voice Coil | 1" NEO Driver, 1" Voice Coil | 1" Ferrite Driver, 1" Voice Coil | 1" Ferrite Driver, 1" Voice Coil |
| Horn Coverage H° x V° | 90°H x 60°V | 90°H x 60°V | 90°H x 60°V | 90°H x 60°V |
| Frequency Response (-6dB) | 55Hz-20KHz | 60Hz-20KHz | 65Hz-20KHz | 68Hz-20KHz |
| Crossover Frequency | 2100 Hz | 2100 Hz | 1900 Hz | 2000 Hz |
| Max SPL | 119dB Max. | 118dB Max. | 116dB at 1M | 113dB at 1m |
| Power Rating | RMS Power: 150+50W - PEAK Power: 800W | RMS Power: 150+50W - PEAK Power: 800W | RMS Power: 90+30W - PEAK Power: 1480W | RMS Power: 90+30W - PEAK Power: 1480W |
| Connector | Line In & Link With XLR | Line In & Link With XLR | Line In & Link With XLR | Line In & Link With XLR |
| External Controls | Volume Control / Power ON with Green LED / Contour / MIC & Line Switch / Clip Limiter with Red LED / Ground Lift | Volume Control / Power ON with Green LED / Contour / MIC & Line Switch / Clip Limiter with Red LED / Ground Lift | Volume Control / Power ON with Green LED / Clip Limiter with Red LED | Volume Control / Power ON with Green LED / Clip Limiter with Red LED |
| Electronic Protections | Thermal / Overload / Analog limiter / Compressor | Thermal / Overload / Analog limiter / Compressor | Thermal / Overload / Analog limiter / Compressor | Thermal / Overload / Analog limiter / Compressor |
| Power Supply | 110V/240V Switchable | 110V/240V Switchable | 110V-240V ~50/60Hz | 110V-240V ~50/60Hz |
| Enclosure Construction | Plastic cabinet, Trapezoidal & Monitor shape, Metal grille, Rubber foot, 3 x Handle (both side and Top) | Plastic cabinet, Trapezoidal & Monitor shape, Metal grille, Rubber foot, 3 x Handle (both side and Top) | Plastic cabinet, Trapezoidal & Monitor shape, Metal grille, Rubber foot, 1 x Handle-On Top | Plastic cabinet, Trapezoidal & Monitor shape, Metal grille, Rubber foot, 1 x Handle-On Top |
| Mounting | 36mm standard pole-mount / M10 x 4pcs Flying Points (Optional) | 36mm standard pole-mount / M10 x 4pcs Flying Points (Optional) | 36mm standard pole-mount | 36mm standard pole-mount |





TP AVANTI15MKII

NEW

- RMS Power: 90 + 30 W
- Peak Power: 500 W
- TRANSDUCER LOW:
15" Woofer 2" Voice Coil
- TRANSDUCER HIGH:
1" Neodymium Driver 1" Voice Coil
- 3 CH input Mixer
- Integrated Multimedia Player with Bluetooth

632 mm x 386 mm x 366 mm · 14.37 Kg



| Model Active | TP AVANTI15AMKII |
|---------------------------|--|
| System Type | 2-Way Active Vented Speaker |
| Transducer Low | 15" Woofer, 2" voice coil |
| Transducer Driver | 1" NEO Driver, 1" Voice Coil |
| Horn Coverage H° x V° | 90°H x 45°V |
| Frequency Response (-6dB) | 55Hz - 20KHz |
| Crossover Frequency | 2.5KHz |
| Max SPL | 117dB Max. |
| Power Rating | 240W (PROGRAM) / 500W (PEAK) |
| USB Player | With USB & Micro SD CARD |
| Connector | INPUT1-Mic with XLR x 1 & 6.3 Jack x 1 / INPUT 2-Line with XLR x 1 & 6.3 jack x 1 & 3.5 jack x 1 |
| External Controls | Input 1&2 and Master Volume Control / 2 Band EQ - High&Low / Power ON with Green LED / Clip Limiter with Red LED |
| Electronic Protections | Thermal / Overload / Analog limiter / Compressor |
| Power Supply | 110V / 240V Switchable |
| Enclosure Construction | Plastic cabinet, Trapezoidal & Monitor shape, Metal grille, Rubber foot, 3 x Handles (both side and Top) |
| Mounting | 36mm standard pole-mount / M10 x 4 pcs Flying Points (Optional) |
| Dimensions (HxWxD) | 632x386x366mm |
| Net Weight | 14.37 kg |
| Volume | 5.35CFT |

Our new SOHO systems offer uncompromising high quality pro audio in a highly efficient low profile footprint. The perfect choice for intimate to mid size spaces for groups or installation. With its sleek modern look, wood satellite columns and subwoofer finished in our special SOHO paint process, and with an impressive total of 2800W (peak) in a coloumn configuration, SOHO excels where it counts, in the way it sounds.

Il nuovo sistema SOHO offre qualità audio senza compromessi in un formato estremamente compatto. E' la scelta ottimale per spazi da piccoli a medi, per piccole band o installazioni fisse. Con il suo look moderno ed elegante, con colonnine e subwoofer in speciale finitura antigraffio, e con un'eccellente potenza complessiva di ben 2800 W (picco) in configurazione Sub-Satellite, il sistema SOHO eccelle sempre in tutte le applicazioni.

TP SOHOV8

- 8x3,5" passive speaker column
- 480 W Program power
- 130 db max spl (Total System SPL)
- Each sub includes free speaker pole & satellite cable
- 4 ohm impedance

129.7 mm x 760 mm x 102.6mm · 6.95 kg



TP SOHO12

- 12" active subwoofer
- RMS Power: 350 + 350 W
- 350 W power output for SOHO V8
- 130 db max spl (Total System SPL)
- Each sub includes free speaker pole & satellite cable
- SLOT for I-PAD DSP control modules (TP CSWM – TP CSWSL)

430 mm x 450 mm x 480 mm · 20.51 kg





| Model Active | TP SOHOV8 |
|---------------------------------|---|
| Mid range woofers | 8 x 3,5' wideband speakers, 1' Voice Coil |
| Nominal power handling capacity | Program Power: 480W - PEAK Power: 960W |
| Frequency response -6dB | 140Hz -20kHz |
| Max SPL | 127dB Max. |
| Nominal impedance | 4 ohms |
| Input Connector | 1 x SPK |
| Directivity | 100° horizontal |
| Crossover frequency | 350Hz, 24 dB / Oct. Active |
| Enclosure Construction | Body In extruded wood, Black paint |
| Mounting | One metal pole-mount, two M8 Hanging points |

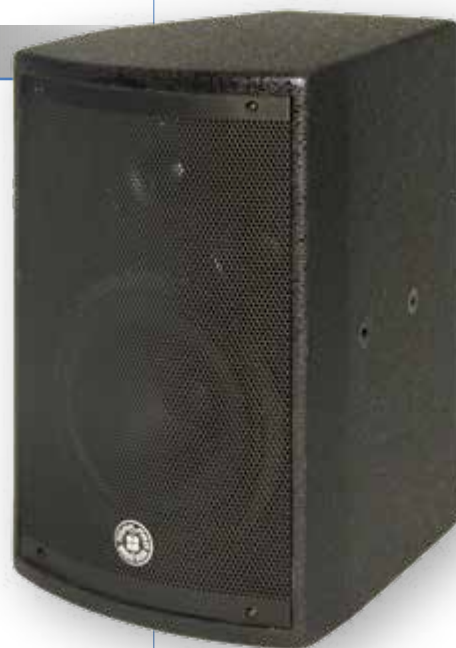
| Model Active | TP SOHOS12 |
|---------------------------------------|--|
| Subwoofer | 1 x 12" - 2.5" Voice Coil |
| Frequency response -6dB | 40Hz-500Hz |
| Total amplifier power | RMS Power: 700W - PEAK Power: 2800W Class D @ 4 Ohms |
| Amplifier, subwoofer | RMS Power: 350W - PEAK Power: 1400W Class D @ 4 Ohms |
| Amplifier, satellite / mid-night unit | RMS Power: 350W - PEAK Power: 1400W Class D @ 4 Ohms |
| Max SPL | 130dB Max. |
| Electronic Protections | Thermal DC / Overload / Digital Compressor / Limit |
| Cooling | Temperature-controlled fan |
| Connections | Input: 2 Combo - XLR 1/4", 1RCA in L&R / Output: SPK Satellite / XLR Link |
| External Controls | Volume Control / Switch for Input sens / Switch for mode selector / Power ON with Green LED / Limiter with Red LED / Ground Lift /IP Control |
| Power Supply | 115V / 230V Switchable |
| Enclosure Construction | Plywood cabinet, rasistant black paint, metal grille with foam, rubber feet, handles |
| Mounting | One metal standard pole-mount |



TP TPS16AP

- RMS Power: 70 W
- Peak Power: 280 W
- TRANSDUCER LOW:
6,5" Woofer 1" Voice Coil
- TRANSDUCER HIGH:
1" Neodymium Tweeter

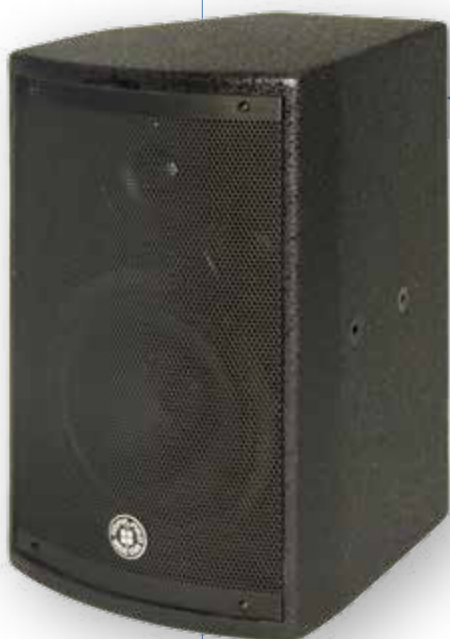
318 mm x 200 mm x 201.5 mm · 9.84 Kg



TP TPS16P

- 140 W Program power
- TRANSDUCER LOW:
6,5" Woofer 1" Voice Coil
- TRANSDUCER HIGH:
1" Neodymium Tweeter

318 mm x 200 mm x 201.5 mm · 8.3 Kg

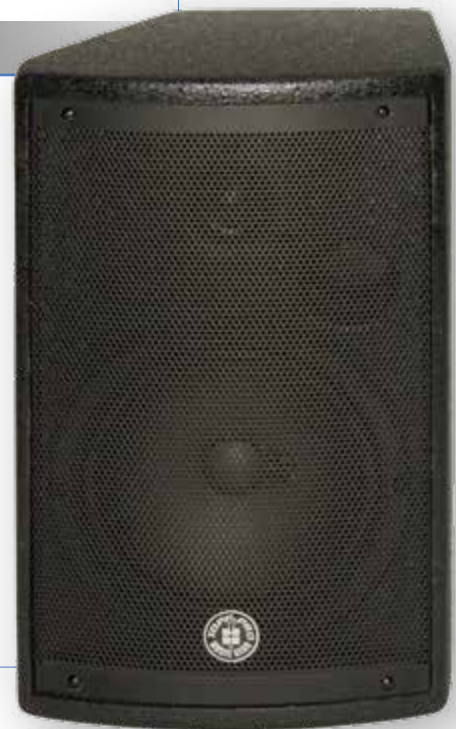




TP TPS16AMUB

- RMS Power: 70 W
- TRANSDUCER LOW:
6,5" Woofer 1" Voice Coil
- TRANSDUCER HIGH:
1" Neodymium Tweeter

318 mm x 200 mm x 201.5 mm · 9,84 Kg



| Model Active | TP TPS16AMUB |
|-------------------------|---|
| System Type: | 2-Way 6.5" Vented Active Speaker Cabinet |
| Power Handling: | RMS Power: 70W - PEAK Power 280W |
| Frequency Response: | 75Hz-20KHz (-6dB) |
| Max SPL: | 113dB Max |
| Low Frequency: | 6.5" (165mm) woofer / 1" Voice Coil |
| High Frequency: | 1" Neodymium Tweeter |
| X-over Frequency: | 5KHz@12dB/oct |
| Mixer: | 2-band equalizer on input channels, 5 Input channels with individual Volume control, 3 bands Master EQ, 3 COMBO microphone Inputs with phantom power, 2 RCA Line Inputs/3.5mm jack, 2 RCA Line Outputs, Monitor output with level control, Powered output 70W (@4 ohms, min) for optional external speakers, 16-preset digital effect processor |
| USB Player: | With USB & Micro SD CARD, Bluetooth |
| Power Supply: | 230V - 115V @50 - 60Hz |
| Amplifier: | Class D 70W x 2, one for inside speaker/one for optional external speaker |
| Electronic Protections: | Thermal / overload / analog limiter |
| Enclosure: | Trapezoidal painted wood cabinet. metal grille |
| Fixing Point: | 4 x M4 Standard (2 x Vertical and Horizontal side) |

| Model Active | TP TPS16AP | TP TPS16P |
|-------------------------|--|--|
| System Type: | 2-Way 6.5" Vented ACTIVE Speaker Cabinet | 2-Way 6.5" Vented PASSIVE Speaker Cabinet |
| Power Handling: | RMS Power: 70W PEAK Power 140W | Program Power: 70W PEAK Power 140W |
| Frequency Response: | 75Hz-20KHz (-6dB) | 75Hz-20KHz (-6dB) |
| Max SPL: | 110dB Max | 110dB Max |
| X-over Frequency: | 6KHz@12dB/oct | 6KHz@12dB/oct |
| Low Frequency: | 6.5" (165mm) woofer / 1" Voice Coil | 6.5" (165mm) woofer / 1" Voice Coil |
| High Frequency: | 1" Neodymium Tweeter | 1" Neodymium Tweeter |
| Connectors: | MIC/LINE balanced input at -40/OdB (Combo Connector), AUX input at -10dB with RCA Connector, LINK Output at -40/OdB with XLR | 6,3 mm mono jack |
| Amplifier: | Class D 70Wx2 (BTL) | - |
| Electronic Protections: | Thermal / overload / analog limiter | - |
| Volume Control: | Continuous, work only on MIC/LINE input | - |
| Power Supply: | 110-120V / 220-240V~50/60Hz | - |
| Enclosure: | Trapezoidal painted wood cabinet. metal grille | Trapezoidal painted wood cabinet. metal grille |
| Fixing Point: | 2 x M4 Standard (2 x Vertical side) | 2 x M4 Standard (2 x Vertical side) |





AMPLIFIERS



TP TRX1500

- 2 channel Power amplifier – 2 rack 19" units
- Power bridge mode 8 ohms: 800 W
- Power stereo mode 4 ohms: 400 W x 2
- Power stereo mode 8 ohms: 250 W x 2

483 mm x 89 mm x 400 mm · 17.85 Kg



TP TRX1000

- 2 channel Power amplifier – 2 rack 19" units
- Power bridge mode 8 ohms: 340 W
- Power stereo mode 4 ohms: 170 W x 2
- Power stereo mode 8 ohms: 130 W x 2

483 mm x 89 mm x 400 mm · 17.1 kg



TP TRX500

- 2 channel Power amplifier – 1 rack 19" units
- Power bridge mode 8 ohms: 140 W
- Power stereo mode 4 ohms: 70 W x 2
- Power stereo mode 8 ohms: 50 W x 2

483 mm x 44 mm x 280 mm · 9.48 kg



| Model Active | TP TRX1500 | TP TRX1000 | TP TRX500 |
|---------------------------------------|--|--|--|
| Bridge Mode 8 Ohms Continuous Peak | 800W 1600W | 340W 680W | 140W 280W |
| Stereo Mode 4 Ohms Continuous Peak | 400W x 2 800W x 2 | 170W x 2 340W x 2 | 70W x 2 140W x 2 |
| Stereo Mode 8 Ohms Continuous Peak | 250W x 2 500W x 2 | 130W x 2 260W x 2 | 50W x 2 100W x 2 |
| Distortion: (SMPTE-IM): | <0.05% | <0.05% | <0.05% |
| Frequency Response: | 20Hz- 20kHz ±0.1/3dB | 20Hz- 20kHz ±0.1/3dB | 20Hz- 20kHz ±0.1/3dB |
| Signal to Noise: | 20Hz- 20kHz 102dB | 20Hz- 20kHz 102dB | 20Hz- 20kHz 102dB |
| Voltage Gain: | 40x (32dB) | 40x (32dB) | 40x (32dB) |
| Input Sensitivity @ 4 ohms: | 1Vrms | 1Vrms | 1Vrms |
| Input clipping: | 10 Vrms (+22dB) | 10 Vrms (+22dB) | 10 Vrms (+22dB) |
| Input Impedance: | 10 Kohms unbalanced, 20 Kohms balanced, 56 (36dB) | 10 Kohms unbalanced, 20 Kohms balanced, 56 (36dB) | 10 Kohms unbalanced, 20 Kohms balanced, 56 (36dB) |
| Controls: | Front: AC Switch, Ch1 - Ch2 Gain Knobs, Rear: Limiter, Bridge Selector | Front: AC Switch, Ch1 - Ch2 Gain Knobs, Rear: Limiter, Bridge Selector | Front: AC Switch, Ch1 - Ch2 Gain Knobs, Rear: Limiter, Bridge Selector |
| Indicators: (1 per Channel) | Power-On: Blue LED, Protection: Green LED, Limiter : Yellow LED, Clip: Red LED, Parallel-input: Yellow LED | Power-On: Blue LED, Protection: Green LED, Limiter : Yellow LED, Clip: Red LED, Parallel-input: Yellow LED | Power-On: Blue LED, Protection: Green LED, Limiter : Yellow LED, Clip: Red LED, Parallel-input: Yellow LED |
| Connectors, each channel: | Input: Terminal Block / Output: Screw-terminal Barrier Block | Input: Terminal Block / Output: Screw-terminal Barrier Block | Input: Terminal Block / Output: Screw-terminal Barrier Block |
| Cooling: | Continuously variable speed fan, front-to-rear air flow | Continuously variable speed fan, front-to-rear air flow | Continuously variable speed fan, front-to-rear air flow |
| Load Protection: | On / Off muting, overheat & short circuit protection | On / Off muting, overheat & short circuit protection | On / Off muting, overheat & short circuit protection |
| Power Supply: | 220-240V (110-120V) AC 50-60Hz | 220-240V (110-120V) AC 50-60Hz | 220-240V (110-120V) AC 50-60Hz |



TP TMA500.4

- 4 channel Power amplifier – 2 rack 19" units
- Power bridge mode 8 ohms: 780 W x 2
- Single channel mode 4 ohms: 400 W x 4
- Single channel mode 8 ohms: 260 W x 4

483 mm x 89 mm x 403 mm · 19.4 Kg



TP TMA250.4

- 4 channel Power amplifier – 2 rack 19" units
- Power bridge mode 8 ohms: 420 W x 2
- Single channel mode 4 ohms: 220 W x 4
- Single channel mode 8 ohms: 145 W x 4

483 mm x 89 mm x 403 mm · 17.4 Kg



| Model Active | TP TMA500.4 | TP TMA250.4 |
|---------------------------------------|--|--|
| Bridge Mode 8 Ohms Continuous Peak | 780W x 2 1560W x 2 | 420W x 2 840W x 2 |
| Stereo Mode 4 Ohms Continuous Peak | 400W x 4 800W x 2 | 220W x 4 440W x 2 |
| Stereo Mode 8 Ohms Continuous Peak | 260W x 4 600W x 4 | 145W x 4 1360W x 4 |
| Signal / Noise 20Hz - 20KHz | 100dB | 90dB |
| Distortion: (SMPTE-IM): | <0.05% | <0.05% |
| Frequency Response: | 20Hz- 20kHz ±0.1/3dB | 20Hz- 20kHz ±0.1/3dB |
| Point: | 10Hz- 60kHz | 10Hz- 60kHz |
| Damping Factor, 1kHz: | >300 a 8 Ohms | >300 a 8 Ohms |
| Voltage Gain: | 40 (32dB) | 40 (32dB) |
| Input Sensitivity @ 4 ohms: | 1Vrms | 1Vrms |
| Input clipping: | 10 Vrms (+22dB) | 10 Vrms (+22dB) |
| Input Impedance: | 10 Kohms unbalanced, 20 Kohms balanced | 10 Kohms unbalanced, 20 Kohms balanced |
| Controls: Front: | AC Switch, Ch1 - Ch4 Gain Knobs, Rear: Mode Switchs | AC Switch, Ch1 - Ch4 Gain Knobs, Rear: Mode Switchs |
| Indicators: | Power-On: Blue LED, Protection: Green LED, Limiter : Yellow LED, Clip: Red LED, Parallel-input: Yellow LED | Power-On: Blue LED, Protection: Green LED, Limiter : Yellow LED, Clip: Red LED, Parallel-input: Yellow LED |
| Connectors, each channel: | Input: Terminal Block / Output: Screw-terminal Barrier Block | Input: Terminal Block / Output: Screw-terminal Barrier Block |
| Cooling: | Continuously variable speed fan, front-to-rear air flow | Continuously variable speed fan, front-to-rear air flow |
| Load Protection: | On / Off muting, overheat & short circuit protection | On / Off muting, overheat & short circuit protection |
| Power Supply: | 220-240V (110-120V) AC 50-60Hz | 220-240V (110-120V) AC 50-60Hz |



ELECTRONICS

TP RTDLM808

NEW

- 8x8 Digital Matrix
- Gate/Exp/Crossover/Peq/Delay/Compressor function
- RC NET for CL4 control
- DANTE optional card READY (TP T-DANTE)

483 mm x 210 mm x 80 mm · 3 Kg



Dante™



| Model Active | TP RTDLM808 |
|-----------------------------------|-------------------------|
| Microphone input | Electronically balanced |
| Frequency Response to Main Output | 20Hz~20KHz at 0dBu±1dB |
| Distortion (THD&N) to Main Output | <0.01% at 0dBu 1KHz |
| SNR (Signal to Noise Ratio) | 110dB |
| Maximum Input Level | +20dBu |
| AUX 1~8 Outputs | - |
| Maximum Output Level | +20dBu |
| System Crosstalk | - |
| Input to Output | -87dBu |
| Adjacent Channels | -87dBu |
| Noise Gate | - |
| Threshold Range | -84dBu -0dB |
| Attack time | 0.5mS~200mS |
| Release time | 5mS~2S |

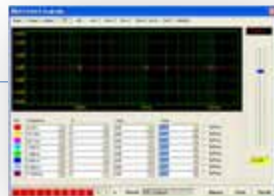
| | |
|------------------------------|------------------------|
| Compressor | - |
| Threshold Range | -30dBu - +20dB |
| Attack time | 10mS~150mS |
| Release time | 10mS~1S |
| Ratio | 1:1 to 24:1 |
| Gain | 0dBu - +24dB |
| EQ-Low (LowPass or LowShelf) | 20Hz~19.2KHz +/-24dB |
| Low Mid / High Mid | 20Hz~19.2KHz +/-24dB |
| High (HighPass or HighShelf) | 20Hz~19.2KHz +/-24dB |
| Digital Audio | - |
| ADC Dynamic Range | 114dB |
| DAC Dynamic Range | 114dB |
| DSP Processor | 32-bit, floating point |
| Sample Rate | 48K/24bit |



TP RTDLM206

- Programmable realtime digital speaker management system
- 2 Input / 6 Output
- 24-bit /48 kHz Sample rate
- AES/EBU Input
- Control Software via USB

483 mm x 210 mm x 40 mm · 2.5 Kg

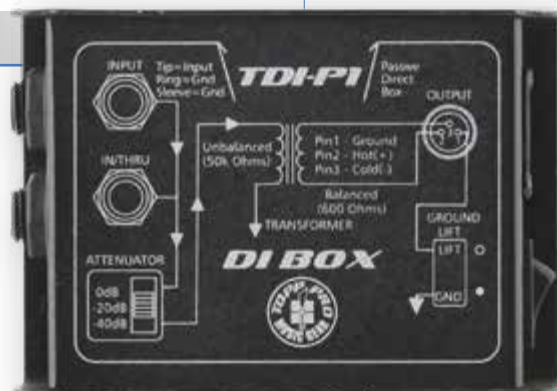


| Model Active | TP RTDLM206 |
|-----------------------------|---|
| Frequency Response: | 20 Hz~20 kHz, +/-0.5 dB |
| S/N Ratio: | >115 dBu |
| Distortion (THD): | <0.01% at 1 kHz (-10 dBv) |
| Cross-talk: | <100 dB below full scale |
| Input Section | Digital: AES/EBU |
| Type: | Balanced XLR |
| Sensitivity: | -20 dBu |
| Max. Input level: | +20 dBu |
| Impedance: | 1 M Ohms/Stereo; 500 k Ohms/Mono |
| Output Section | Six Channels |
| Type: | Balanced XLR |
| Max. Output level (bypass): | +20 dBu |
| Impedance: | <500 Ohms |
| Digital Processing | 24-bit sigma-delta converters 48 kHz Sampling Rates |
| Bypass | Bypass all the DSP function |
| Display | 16 2 LCD Display for parameters setting and function select 7 8 LED for Input and Output Level Display |
| Control | 9 buttons for different DSP functions selection 4/6 buttons for Outputs channels Muting |
| Power Supply | AC90-264V, 50/60Hz |

TP TDIP1

- Passive D.I. Box
- Jack 1/4" unbalanced input
- Jack 1/4" unbalanced link output
- XLR balanced output
- Ground lift
- 20 dB attenuator

127 mm x 760 mm x 45 mm · 0.54 Kg



TP TDIA2

- Active D.I. Box
- Jack 1/4" and XLR unbalanced input
- Jack 1/4" unbalanced link output
- XLR balanced output
- Ground lift
- 20 dB attenuator
- 48V phantom power or 9V battery

130 mm x 127 mm x 45 mm · 0.6 Kg





TP T2

- Signal transmitter
- Transmitter Operating Band:
ISM 2.4GHz free band
- GFSK digital modulation/demodulation
- External antenna
- 30 meters transmit distance in open place
- Up to 10 Receivers usable for each Transmitter

127 mm x 76 mm x 45 mm · 0.54 Kg



TP R1

- Signal receiver
- Receiver or Multi receiver Operating Band:
ISM 2.4GHz free band
- GFSK digital modulation/demodulation
- External antenna
- 30 meters transmit distance in open place

127 mm x 76 mm x 45mm · 0.54 Kg





PUBLIC ADDRESS



TP TAP40TBK - TP TAP40TWH

- POWER:
70V: 20W / 10W / 5W / 2.5W
100V: 20W / 10W / 5W
- TRANSDUCER LOW:
4" Full Range Speaker 1" Voice Coil
- SPL: 90 dB



TP TAP40ABK - TP TAP40AWH

- POWER: 40 W
- TRANSDUCER LOW:
4" Full Range Speaker 1" Voice Coil
- SPL: 90 dB



TP TAP20A

- POWER: 20W
- TRANSDUCER LOW:
3" Full Range Speaker 1" Voice Coil
- SPL: 85dB



| Model Active | TP TAP40T | TP TAP40A | TP TAP20A |
|--------------------|--|--|--|
| System Type | Speaker cabinet with transformer | Active speaker cabinet | Active speaker cabinet |
| Continuous Power | 70V: 40W/20W/10W/5W 100V: 40W/ 20W/10W | 40W | 20W |
| Sensitivity | (1w/1m) 90dB (±3dB) | (1w/1m) 90dB (±3dB) | (1w/1m) 85dB (±3dB) |
| Impedance | 70V: 1220/2500/5000/1K0 100V: 2500/5000/1K0 | 4ohms | 4ohms |
| Speaker | 4" Full range speaker - 1" V.C. | 4" Full range speaker - 1" V.C. | 3" Full range speaker - 0.8" V.C. |
| External Controls | Power selective switch | Volume control / Power switch | Volume control / Power switch |
| Frequency Response | 76Hz - 18kHz | 76Hz-18kHz | 132Hz-20kHz |
| Connectors | Wiring terminal | Input-RCA and Ø6,3 Balanced / Output-link Ø6,3 Jack | Input-RCA and Ø6,3 Balanced / Output-link Ø6,3 Jack |
| Power Supply | - | 100-120V~60Hz / 210-240V~50Hz | 100-120V~60Hz / 210-240V~50Hz |



TP CSL6112

- 6,5" full-range ceiling speaker
- 12 W Max Power
- 70 V / 100 V line operations

NEW



| Model Active | TP CSL6112 |
|------------------------------|--|
| Built-in Speaker | 6.5" full range paper speaker |
| Rated Noise Power | 12W(70V/100V Line) |
| Rated Impedance | 70V Line: 1667Ω(3W)/833Ω(6W)/408Ω(12W) 100V Line: 3333Ω(3W)/1667Ω(6W)/833Ω(12W) |
| Sensitivity | 92dB(1W,1m)(500Hz-5KHz, pink noise) 79dB(1W,4M)(100Hz-10KHz, pink noise) according to EN 54-24 92dB(1W,1m)(100Hz-10KHz, pink noise) converted base on EN 54-24 |
| Frequency response | 110Hz-20KHz |
| Maximum Sound Pressure Level | 87dB(12W,4M)(100Hz-10KHz pink noise) according to EN 54-24 98dB(12W,1M)(100Hz-10KHz pink noise) converted base on EN 54-24 |
| Cover Angle (-6dB) | 500Hz: 270°, 1KHz:140°, 2KHz: 80°, 4KHz:50°, according to EN 54-24 |
| Weight | 0.94 kg (bracket fire dome included) |
| Dimensions | φ 199x13mm(exposed section) + 74(D)mm |
| Environmental Type | (indoor applications) according to EN 54-24 |
| Speaker Component | 16.5cm (6.5) cone-type" |
| Dimensions for Fixing Hole | φ 178 (mounting hole) x 30 (maximum ceiling thickness) mm (φ 7 x 1.18)" |
| Applicable Cable | Solid wire: φ 0.8mm (AWG-18) |
| Connection | Screw connector (steatite terminal x 2l) bridging |
| Finish | Baffle: steel, white or equivalent color, paint Grille: Steel net, of - white or equivalent color, paint Dome moment bracket: trivalent chromate treatment plating Fire dome is made of 5VB plastic |

TP SPA4

- Passive Analog Mixer
- 4 ch Combo IN + 1 ch Stereo Line IN
- Gain + 2 band EQ
- Phantom Power
- Volume control
- Output Selector
- 4 ch Bal/Unbal OUT
- Phone + Monitor
- Output Volume Led meter
- Phoenix Connectors

483 mm x 133 mm x 395 mm 9,5Kg



TP SPA12

- Passive Analog Mixer
- 6 ch Combo IN + 3 ch Stereo Line IN
- Master 3 band EQ
- Phantom Power
- RCA Output
- Volume Level Signal Led
- 1 rack 19" unit

483 mm x 210 mm x 40 mm · 2.5 Kg





TP PA120

- 120 W RMS / 4 OHM Output Power
- 4 Mic/Line Combo IN
- Mic/Line/Phantom Switch selector
- 1 RCA Aux IN
- 2 band EQ on Master with front panel control
- Constant Voltage Output: 25V, 70V and 100 V

420 mm x 88 mm x 330 mm · 19,5 Kg



TP PA240

- 240 W RMS / 4 OHM Output Power
- 4 Mic/Line Combo IN
- Mic/Line/Phantom Switch selector
- 1 RCA Aux IN
- 2 band EQ on Master with front panel control
- Constant Voltage Output: 25 V, 70 V and 100 V

420 mm x 88 mm x 330 mm · 23,56 Kg



TP TMA54Z

- Professional 4 zones amplifier
- 5 channel mixer
- 4 zone separate power outputs
- 240 W total Power
- Output constant voltage: 25 V, 70 V, 100 V

483 mm x 133 mm x 395 mm 21,6 Kg



| Model Active | TP TMA54Z |
|--------------------------|--|
| Power Supply: | 110-120V~ 60Hz or 220-240V~50/60Hz Selectable |
| Inputs Sensitivity: | CH1- 4: Mic/Phantom: -50dBV; Line: -10dBV balance |
| CH5: | -10dBV unbalance |
| Telephone paging: | -10dBV |
| Frequency response: | 60-17000Hz(-3dB) |
| Tone control: | Treble: 10dB at 10KHz Bass: 10dB at 100Hz |
| T.H.D.: | <1% |
| S/N ratio: | Mic. >65dB |
| Line: | >75dB |
| Tel: | >65dB |
| Priority for Mic-1: | mute CH2-CH5 |
| Outputs impedance: | 4 ohms , 8 ohms |
| Output constant voltage: | 25V,70V,100V |
| Power output: | RMS120W X 4 (at 4 ohms) |

| | |
|-------------------|---|
| Monitor output: | 1W RMS |
| Phone output: | 1W (47ohm) |
| Line out: | 2.0V(BAL) |
| Monitor Line out: | 1V(600 ohms) |
| Controls: | 5 Gain controls for Ch1-5 8 Volume controls for Ch1-5, tel. paging, monitor, phone 4 Master volume control 5 Trebel controls 5 Bass controls 4 Zone select switch for each channel 4 Zone monitor select switch 5 mute controls 1 AC select switch |
| Indicate LED: | 5VU meters (LED type) 1 Power indicator 5 Mute indicators |



ASSEMBLED CABLES

TP GC01

NEW

Professional assembled instrument cable with two Ø 6,3 mm mono jack plug connections. Black PVC jacket – Ø 7 mm.



| DESCRIPTION | LENGTH |
|-------------|-----------------|
| TP GC01LU03 | 3 mt (9.84 ft) |
| TP GC01LU05 | 5 mt (16.40 ft) |

TP GC02

NEW

Professional assembled instrument cable with Ø 6,3 mm mono jack plug / Ø 6,3 mm right angle mono jack plug connections. Black PVC jacket – Ø 7 mm.



| DESCRIPTION | LENGTH |
|-------------|-----------------|
| TP GC02LU03 | 3 mt (9.84 ft) |
| TP GC02LU05 | 5 mt (16.40 ft) |

TP MC01

NEW

Professional assembled balanced microphone cable with 3P XLR female / 3P XLR male connections. Black flexible PVC jacket – Ø 7 mm.



| DESCRIPTION | LENGTH |
|-------------|------------------|
| TP MC01LU5 | 5 mt (16.40 ft) |
| TP MC01LU10 | 10 mt (32.81 ft) |

TP MC02

NEW

Professional assembled balanced microphone cable with 3P XLR male / 6.3 mm Stereo jack plug connections. Black flexible PVC jacket – Ø 7 mm.



| DESCRIPTION | LENGTH |
|-------------|------------------|
| TP MC02LU5 | 5 mt (16.40 ft) |
| TP MC02LU10 | 10 mt (32.81 ft) |



TP ACY01

NEW

Professional assembled audio "Y" cable with Ø 3.5 mm Stereo metal jack plug / 2 x RCA metal plug connections. Black PVC jacket.



| DESCRIPTION | LENGHT |
|---------------|------------------|
| TP ACY01LU015 | 1,5 mt (4.92 ft) |
| TP ACY01LU03 | 3 mt (9.84 ft) |

TP ACY02

NEW

Professional assembled audio "Y" cable with Ø 3.5 mm Stereo metal jack plug / 2 x Ø 6,3 mm mono jack plug connections. Black PVC jacket.



| DESCRIPTION | LENGHT |
|---------------|------------------|
| TP ACY02LU015 | 1,5 mt (4.92 ft) |
| TP ACY02LU03 | 3 mt (9.84 ft) |

TP SCX01

NEW

Professional assembled "STEREO" cable with 2 x Ø 6.3 mm Mono jack plug / 2 x RCA metal plug connections. Black PVC jacket.



| DESCRIPTION | LENGHT |
|---------------|------------------|
| TP SCX01LU015 | 1,5 mt (4.92 ft) |
| TP SCX01LU03 | 3 mt (9.84 ft) |

TP SCX02

NEW

Professional assembled "STEREO" cable with 2 x RCA metal plug / 2 x RCA metal plug connections. Black PVC jacket.



| DESCRIPTION | LENGHT |
|---------------|------------------|
| TP SCX02LU015 | 1,5 mt (4.92 ft) |
| TP SCX02LU03 | 3 mt (9.84 ft) |

TP PH01

NEW

Series of professional Powered speaker / DMX Combi cables, made of high quality standards materials. Equipped with "PRO" Series XLR connectors with all-metal body and moulded power connectors. 3*1.5 mm² Power cable combined with AWG22 pair high grade balanced cable, suitable for AUDIO or DMX signal transmission.



| DESCRIPTION | LENGHT |
|-------------|------------------|
| TP PH01LU5 | 5 mt (16.40 ft) |
| TP PH01LU10 | 10 mt (32.81 ft) |
| TP PH01LU15 | 15 mt (49.21 ft) |
| TP PH01LU20 | 20 mt (65.62 ft) |



ACCESSORIES

TP SS180KIT

NEW

Pair of speaker stands, made of steel and nylon parts with additional glass fiber, to ensure high reliability and resistance. Black finish. Equipped with height adjustment screw system and steel safety pin. Supplied with a practical Nylon210D carrying bag.

Minimum Height: 1200 mm / Maximum Height: 1800 mm



TP SS200KIT

NEW

Pair of aluminium speaker stands. Equipped with height adjustment screw system and steel safety pin. Supplied with a practical nylon 210D carrying bag. Black finish.

Minimum Height: 1250 mm / Maximum Height: 2000 mm



TP SSA90

NEW

Adjustable speaker pole for speaker-subwoofer separation with terminal pieces \varnothing 35 mm. Supplied with a bolt locking mechanism incorporating a steel pin for extra safety. Black finish.

Adjustment: 850 - 1400 mm





TP SSA90M20

NEW

Adjustable speaker pole for speaker-subwoofer separation with screw-mount bottom terminal piece (supplied with screw M20 x 2.5). It features a bolt locking mechanism incorporating a steel pin for extra safety. Black finish.

Adjustment: 850 - 1400 mm



TP WMH10

NEW

Wall mount heavy duty steel tube speaker stand. The directional mounting bracket allows both horizontal and vertical adjustment. Black finish.

Maximum Load: 30 Kg



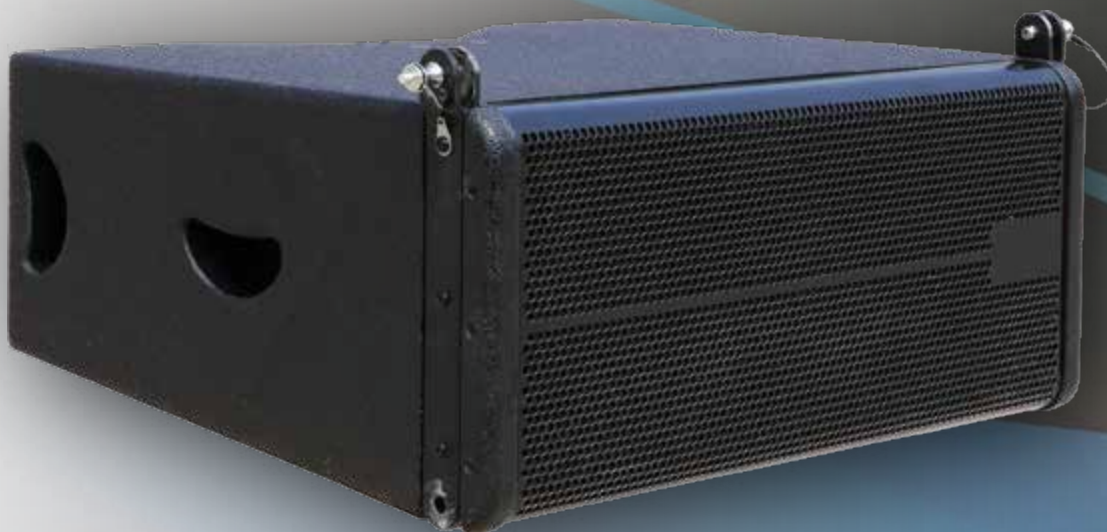
TP SMS

NEW

Triangular base nearfield monitor stand. Provided with new base design. Steel tube structure, provides a height adjustable pin security system from 850 mm to 1170 mm (five different positions). 230 mm x 230 mm upper plate size. Perfect for home recording and studio recording use. Black finish.



APX 28 SERIES



KEY FEATURES

- Sound setup & presets made by PROEL
- Network control via software
- Celestion Neodymium Transducers
- Flying subwoofer and rigging accessories for hanging, stacking and compact operations

CELESTION
Driven



EASY and MU
configure and setup as



PROFESSIONAL ACTIVE LINE ARRAY SYSTEM

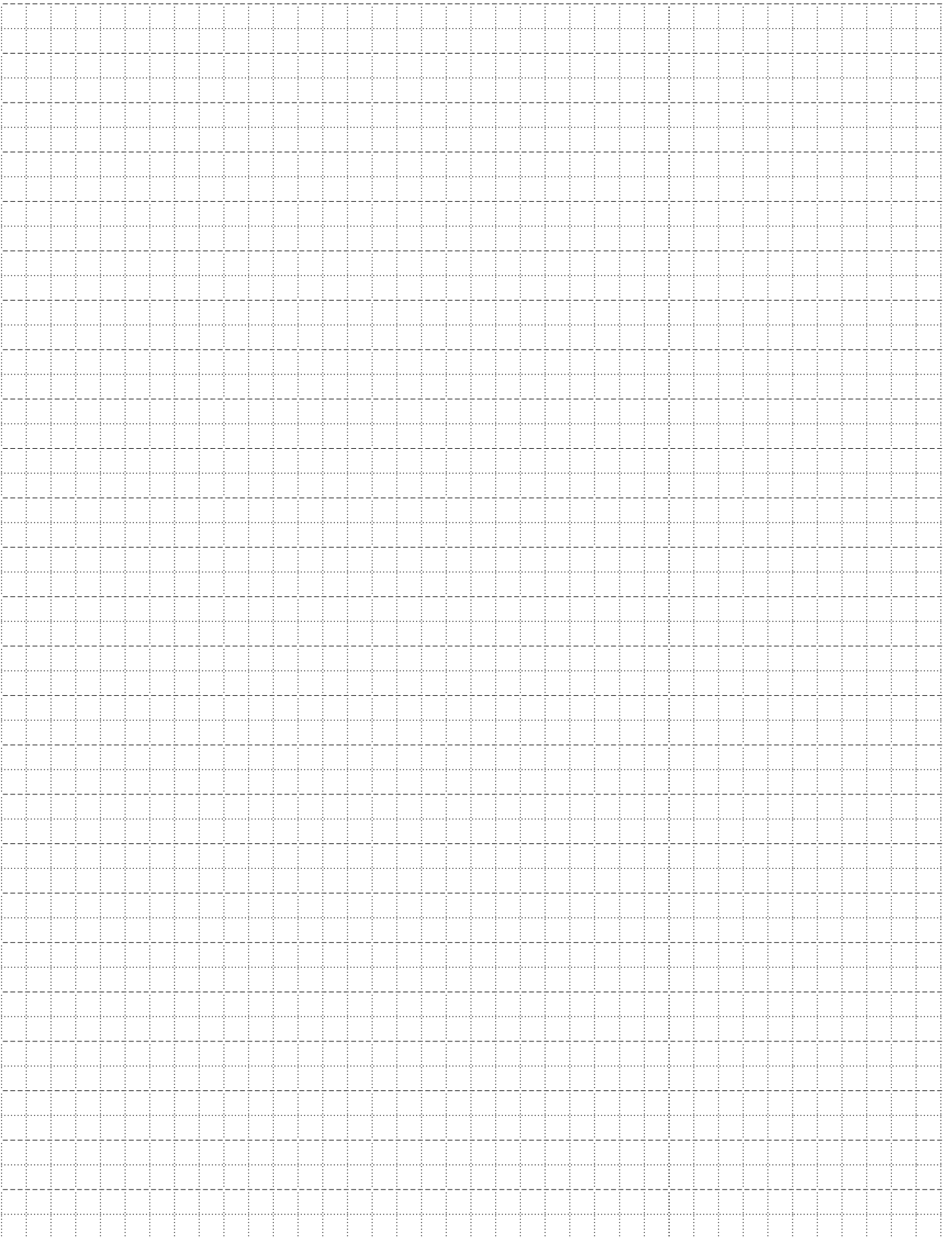


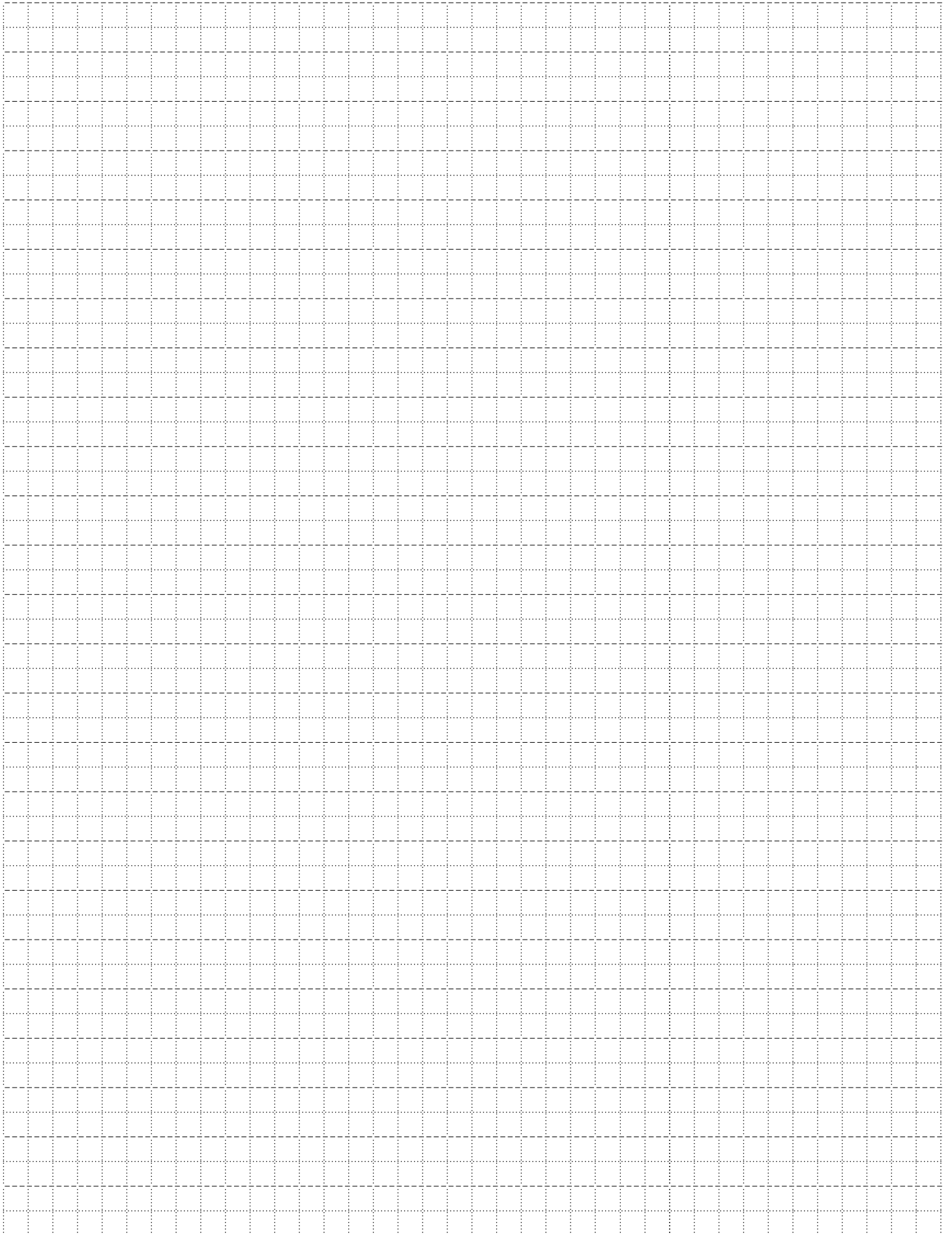
MULTIPLE
as you want

ALPHABETICAL INDEX

| CODE | PAGE | CODICE | PAGE | CODICE | PAGE |
|-----------------|------|---------------|------|----------------|------|
| TP ACY01LU015 | 56 | TP RTDLM206 | 45 | TP TRX1500 | 39 |
| TP ACY01LU03 | 56 | TP RTDLM808 | 44 | TP TRX500 | 40 |
| TP ACY02LU015 | 56 | TP SCX01LU015 | 56 | TP WIFI-MODULE | 8 |
| TP ACY02LU03 | 56 | TP SCX01LU03 | 56 | TP WMH10 | 61 |
| TP AVANTI15MKII | 33 | TP SCX02LU015 | 56 | TP X10A | 31 |
| TP CASET2208PT | 9 | TP SCX02LU03 | 56 | TP X12A | 30 |
| TP CSL6112 | 51 | TP SMS | 61 | TP X15A | 30 |
| TP CSWM | 19 | TP SOH0512 | 34 | TP X8A | 31 |
| TP CSWSL | 19 | TP SOHOV8 | 34 | TP XCS12A | 29 |
| TP ETHERNET-EXP | 8 | TP SPA12 | 52 | TP XCX15A | 29 |
| TP GC01LU03 | 55 | TP SPA4 | 52 | | |
| TP GC01LU05 | 55 | TP S5180KIT | 60 | | |
| TP GC02LU03 | 55 | TP S5200KIT | 60 | | |
| TP GC02LU05 | 55 | TP S5A90 | 60 | | |
| TP K515ASUB | 20 | TP S5A90M20 | 61 | | |
| TP K518ASUB | 20 | TP T2 | 47 | | |
| TP KSC510A | 18 | TP T2208 | 8 | | |
| TP KSC510A | 18 | TP T32USB-EXP | 8 | | |
| TP KSC512A | 17 | TP TACMP3R | 10 | | |
| TP KSC515A | 17 | TP TACMP3T | 10 | | |
| TP MAXX10ASUB | 28 | TP TAP20A | 50 | | |
| TP MAXX12ASUB | 27 | TP TAP40ABK | 49 | | |
| TP MAXX15ASUB | 27 | TP TAP40AWH | 49 | | |
| TP MC01LU10 | 55 | TP TAP40TBK | 49 | | |
| TP MC01LU5 | 55 | TP TAP40TWH | 49 | | |
| TP MC02LU10 | 55 | TP T-DANTE | 8 | | |
| TP MC02LU5 | 55 | TP TDIA2 | 46 | | |
| TP MX1222FX | 10 | TP TDIP1 | 46 | | |
| TP MX12FXV2 | 11 | TP TMA250.4 | 41 | | |
| TP MX3BT | 13 | TP TMA500.4 | 41 | | |
| TP MX3BT | 13 | TP TMA54Z | 54 | | |
| TP MX5V2 | 12 | TP TPS10MA | 25 | | |
| TP MX6FXV2 | 11 | TP TPS12MA | 25 | | |
| TP MX6V2 | 12 | TP TPS16AMUB | 37 | | |
| TP PA120 | 53 | TP TPS16AP | 36 | | |
| TP PA240 | 53 | TP TPS16P | 36 | | |
| TP PH01LU10 | 57 | TP TPS110HA | 23 | | |
| TP PH01LU15 | 57 | TP TPS112HA | 22 | | |
| TP PH01LU20 | 57 | TP TPS115HA | 22 | | |
| TP PH01LU5 | 57 | TP TPS18HA | 23 | | |
| TP R1 | 47 | TP TRX1000 | 39 | | |

TP CAT18IE







#WeListenToYou

TOPP PRO

exclusive distributor for EMEA countries:

PROEL SPA
(Worldwide Headquarters)
Via alla Ruenia, 37/43
64027 Sant'Omero (TE) - ITALY
Tel. +39 0861 81241
Fax +39 0861 887862

info@topppro.eu

www.topppro.eu