

PRODUCT GUIDE 2020
COMMERCIAL
AUDIO

PROEL 



PROEL 

EN54 Evacuation systems	5
Speakers for EN54 evac applications	11
Audio systems	17
Conference systems	21
Portable systems	25
Amplifiers	27
Pre-amplifiers/Mixers and processors	33
Receivers and audio sources	37
Sound speakers	39
Professional sound speakers	51
LNE Systems	57
Microphones	59
Rack and accessories	65
Volume controls	71
Line transformers	73
Cables and connectors	75

INDEX





EN54 EVACUATION SYSTEMS

EN54 EVACUATION SYSTEMS



AE604

Wall mounted All-In-One voice alarm system compliant with **EN54-16** with testing and charge circuit compliant with **EN54-4**.

4 Zones System on redundant loudspeaker line and back up Amplifier.

Main and backup amplifier in class D "Pure Path"[™].

300W @ 100V on redundant loudspeaker line (A + B). The system does not require a line end resistor.

The system ensures full power performance even with backup power.

Processing circuit by DSP; balanced and isolated background music input, isolated and balanced background music microphone input with selectable 48Vdc phantom power supply and priority activation by contact; monitored input for remote emergency call stations; front panel fitted with monitor loudspeaker, monitored emergency PPT microphone, direct sending message keys, navigation keys, large display with LCD dot matrix. Line output for active sub-woofer; audio messages stored on uSD 16bit 48kHz: 8 general purpose messages with activation from dedicated input. contacts or incorporated scheduler, 8 monitored contacts for emergency announcement activation.

4 12Vdc batteries 18Ah not included.

**Availability: 3° quarter*



AE300 (order code AE300R1)

Wall mounted All-In-One voice alarm system compliant with **EN54-16** with testing and charge circuit compliant with **EN54-4**.

Main and backup amplifier in class D "Pure Path"[™]

300W @ 100V on redundant loudspeaker line (A + B). The system does not require a line end resistor.

The system ensures full power performance even with backup power.

Processing circuit by DSP; balanced and isolated background music input, isolated microphone input with selectable 48Vdc phantom power supply and priority activation by contact; monitored input for remote emergency call stations; front panel fitted with monitor loudspeaker, monitored emergency PPT microphone, direct sending message keys, navigation keys, large display with LCD dot matrix.

Line output for active sub-woofer; audio messages stored on uSD 16 bit 48kHz: 8 general purpose messages with activation from dedicated input contacts or incorporated scheduler, 2 monitored contacts for emergency announcement activation.

4 12Vdc batteries. 7.2Ah not included

Dimensions (WxHxD): 440x495x155mm

Certification EN 54-16:2008 0051-CPR-0514



PA DBE01

Fully monitored desk call station according to **EN54-16**. Software programmable "Talk" key, "Busy" and "System" LEDs, dynamic gooseneck microphone, automatic compressor, level adjustment trimmer Wiring by Rj45 connector and CAT5 Cable.



PA DBE06

Fully monitored desk call station according to **EN54-16**. Software programmable capacitive selection keys, "Talk" and "Busy" Keys, "System" LEDs, dynamic gooseneck microphone, automatic compressor, level adjustment trimmer Wiring by Rj45 connector and CAT5 Cable. Power supply from RJ45 cable or 24Vdc local adaptor.



PA DBE108

Fully monitored desk call station according to **EN54-16**. 10 keys dial keyboard, "Talk" and "Clear" key, 3 Evac activation keys, touch screen quarter VGA TFT display, dynamic gooseneck microphone, DSP audio processing. All keys and functions are software programmable. Wiring by Rj45 connector and CAT5 Cable. Power supply from RJ45 cable or 24Vdc local adaptor.



PA DBE108E

Fully monitored Ethernet desk call station according to **EN54-16**. Connects to networkable Proel Evac System. 10 keys dial keyboard, "Talk" and "Clear" key, 3 Evac activation keys, touch screen quarter VGA TFT display, dynamic gooseneck microphone, DSP audio processing. All keys and functions are software programmable. Wiring by Rj45 connector and CAT5 Cable. Power supply from RJ45 cable or 24Vdc local adaptor.



PA DBEVF

Fully monitored, wall-mount, red metal box, **EN54-16** Firemen's call station with handheld PTT Microphone. Fully software programmable, with status LEDs. Access to the security and fire alarm features system is granted by a key-lock. "EVAC" and "ALARM" Remote Message Activation Button. Wiring by Rj45 connector and CAT5 Cable. Power supply from RJ45 cable or 24Vdc local adaptor.

EN54 EVACUATION SYSTEMS



PA AEM5Z

Digital Master matrix certified **EN 54-16**
 Up to 5 slots for direct plug-in modules for the Amplifier/line control.
 Up to 108 zones (54 with dual-line architecture for zone A/B)
 LCD display with navigation knobs for the complete unit control
 Led Power, Fault Warning and Voice Alarm
 Front USB socket for PC interface purposes
 24 Vdc power supply input
 Spare amplifier input
 Two RJ45 connectors for the Slave matrix connecting purposes
 Two RJ45 connectors for the microphone units connecting (up to 108 microphone units)
 Two contact activation messages and in/out programmable connectors
 Common fault out
 2 rack unit 19" Standard
 Certification EN54-16:2008 0068-CPR-014

PA AES8Z

EN54-16 certified slave matrix
 Up to 8 directly insertable modules for amplifier/line control
 Power LED
 Fault Warning and Voice Alarm
 24Vdc power supply input
 Backup amplifier input
 Four RJ45 connectors for connection to the Master matrix and subsequent Slave matrix
 2 standard 19" rack units
 Certification EN54-16:2008 0068-CPR-014



PA EV MCL1Z

Zone module for amplifier/line control to be inserted in the Master EV PROM5Z or Slave EV PROS8Z matrix

PA EV MCL2Z

Zone module for the control of the second line in the same zone amplifier, to be inserted in the Master EV PROM5Z or Slave EV PROS8Z matrix

PA AELAB

Zone controller managing the amplifier and the redundant loudspeaker lines (A+B) performing continuous monitoring. The module fits into the AEM5Z Master matrix or AES8Z Slave matrix.



PA 48VDC12A

Back-up power supply control system.

Provides the back-up power supply to maintain the system in operation when there is no mains power supply.

48V input for external back-up batteries (not provided). Battery capacity 150 Ah.

The built-in charger controls the power supply circuit when the AC supply operates correctly. In case of no mains power supply, all system devices will be automatically powered by the 48VDC batteries. The system controls the power supply circuit both for the mains power supply and for battery operation by communicating the power supply status and any faults to the unit.

EN54-4 certified system 230V/50Hz power supply



PA DM250/550/750

Modular Professional Power Unit: 70/100V: DM250 250W – DM550 550W – DM750 750W

Speaker short-circuit and overload protection circuit

Multi-Level Protection and Self Fault Recovery

Energy Saving Circuit

On Board DSP

LED indicators

Master Level control

Low and high tone adjustment

PA-HF Filter with rear switch

VOX threshold adjustment

MIC/Line input gain adjustment

Balanced Line Input on Euroblock terminal

Priority Mic/Line Balanced Input on RJ45 socket

Two selectable outputs at Constant voltage (70/100V) on Euroblock terminal

48Vdc emergency power supply

Dimensions (WxHxD): 116x53x367mm

Weight: 2.15Kg

Maximum 8 modules in a rack case MDA8C (3U rack 19")



PA MDAC8

8 units rack case (3U rack 19") for MDA series



PA MDACTV

8 units rack ventilated case (3U rack 19") for MDA/DMPower series





SPEAKERS FOR EN54 EVAC APPLICATIONS

SPEAKERS FOR EN54 EVAC APPLICATIONS

ARTIA SERIES



PA A51TB - PA A51TW

System type: Wall Mount Speaker
Drivers: 1" tweeter, 5" woofer
Power Rating @ 8 Ω (nominal): 50 W
Rated Noise Power 100h: 50 W
Power Rating @ 100V: 50 / 25 / 12.5 / 6.25 W
Power Rating @ 70V: 50 / 25 / 12.5 / 6.25 / 3.12 W
Impedance: 8 Ω (nominal)
200 / 400 / 800 / 1.6K Ω @ 100V
100 / 200 / 400 / 800 / 1.6K Ω @ 70V
Connector: Ceramic Terminal Block
Power Selection: Rotary Switch
Frequency Response: (-10 dB) 90 - 20k Hz
Sensitivity at 1W (1 kHz, 1m / 4m): 89 / 77 dB
Max SPL (1 kHz, 1m / 4m): 106 / 94 dB
Coverage Angle at 500 / 1k / 2k / 4k Hz(-6dB): 180° / 180° / 180° / 120°
Cabinet: Black (RAL 9011)/White (RAL 9016)
Material: ABS / Aluminium
Environmental Type: B (IP55C)
Operating Temperature: -25 ÷ +70 °C (-13 ÷ +158 °F)
Relative Humidity: < 95%
Dimensions (mm): 170 x 245 x 175 (W x H x D)
Mounting: on wall using supplied bracket
Weight (Kg): 2.3
Standard Compliance: **EN54-24:2008**

PA A51TB: Black Color
PA A51TW: White Color



PA A31TB - PA A31TW

System type: Wall Mount Speaker
Drivers: 1" tweeter, 3" woofer
Power Rating @ 8 Ω (nominal): 25W
Rated Noise Power 100h: 25 W
Power Rating @ 100V: 25 / 12.5 / 6.25 / 3.12 W
Power Rating @ 70V: 25 / 12.5 / 6.25 / 3.12 / 1.56 W
Impedance: 8 Ω (nominal)
400 / 800 / 1.6K / 3.2K Ω @ 100V
200 / 400 / 800 / 1.6K / 3.2K Ω @ 70V
Connector: Ceramic Terminal Block
Power Selection: Rotary Switch
Frequency Response: (-10 dB) 120 - 20k Hz
Sensitivity at 1W (1 kHz, 1m / 4m): 87 / 75 dB
Max SPL (1 kHz, 1m / 4m): 101 / 89 dB
Coverage Angle at 500 / 1k / 2k / 4k Hz(-6dB): 180° / 120° / 120° / 90°
Cabinet: Black (RAL 9011)/White (RAL 9016)
Material: ABS / Aluminium
Environmental Type: B (IP55C)
Operating Temperature: -25 ÷ +70 °C (-13 ÷ +158 °F)
Relative Humidity: < 95%
Dimensions (mm): 140 x 209 x 125 (W x H x D)
Mounting: on wall using supplied bracket
Weight (Kg): 1.74
Standard Compliance: **EN54-24:2008**

PA A31TB: Black Color
PA A31TW: White Color

ARTIA SERIES



PA AP50T

System type: Sound Projector
Drivers: 5" dual cone full range
Rated Noise Power 100h: 20 W
Power Rating @ 100V: 20 / 10 / 5 W
Power Rating @ 70V: 10 / 5 / 2.5 W
Impedance: 500 / 1K / 2K Ω @ 100V
500 / 1K / 2K Ω @ 70V
Connector: Ceramic Terminal Block
Power Selection: On terminal block
Frequency Response: (-10 dB) 100 - 12k Hz
Sensitivity at 1W (1 kHz, 1m / 4m): 90 / 78 dB
Max SPL (1 kHz, 1m / 4m): 103 / 91 dB
Coverage Angle at 500 / 1k / 2k / 4k Hz(-6dB): 180° / 120° / 80° / 60°
Cabinet: White (RAL 9016)
Material: Aluminium
Environmental Type: B (IP55C)
Operating Temperature: -25 ÷ +70 °C (-13 ÷ +158 °F)
Relative Humidity: < 95%
Dimensions (mm): 140 x 140 x 195 (W x H x D)
Mounting: Brick/concrete on ceilings/wall
Weight (Kg): 2.63
Standard Compliance: **EN54-24:2008**



PA AP52T

System type: Bi-Directional Sound Projector
Drivers: 2x 5" full range
Rated Noise Power 100h: 20 W
Power Rating @ 100V: 20 / 10 / 5 W
Power Rating @ 70V: 10 / 5 / 2.5 W
Impedance: 500 / 1K / 2K Ω @ 100V
500 / 1K / 2K Ω @ 70V
Connector: Ceramic Terminal Block
Power Selection: On terminal block
Frequency Response: (-10 dB) 120 - 12k Hz
Sensitivity at 1W (1 kHz, 1m / 4m): 88 / 76 dB
Max SPL (1 kHz, 1m / 4m): 101 / 89 dB
Coverage Angle at 500 / 1k / 2k / 4k Hz(-6dB): (2x) 180° / 120° / 80° / 60°
Cabinet: White (RAL 9016)
Material: Aluminium
Environmental Type: B (IP55C)
Operating Temperature: -25 ÷ +70 °C (-13 ÷ +158 °F)
Relative Humidity: < 95%
Dimensions (mm): 140 x 185 x 200 (W x H x D)
Mounting: Brick/concrete on ceilings/wall
Weight (kg): 3.45
Standard Compliance: **EN54-24:2008**

SPEAKERS FOR EN54 EVAC APPLICATIONS

ARTIA SERIES



PA AH50T

System type: Hanging Speaker
Drivers: 5" dual cone full range
Rated Noise Power 100h: 20 W
Power Rating @ 100V: 20 / 10 / 5 W
Power Rating @ 70V: 10 / 5 / 2.5 W
Impedance: 500 / 1K / 2K Ω @ 100V
500 / 1K / 2K Ω @ 70V
Connector: Ceramic Terminal Block
Power Selection: On terminal block
Frequency Response: (-10 dB) 100 - 12k Hz
Sensitivity at 1W (1 kHz, 1m / 4m): 90 / 78 dB
Max SPL (1 kHz, 1m / 4m): 103 / 91 dB
Coverage Angle at 500 / 1k / 2k / 4k Hz (-6dB): 180° / 120° / 80° / 60°
Cabinet: White (RAL 9016)
Material: Aluminium
Environmental Type: B (IP55C)
Operating Temperature: -25 \div +70 °C (-13 \div +158 °F)
Relative Humidity: < 95%
Dimensions (mm): 140 x 140 x 195 (W x H x D)
Mounting: Suspended from ceilings
Weight (kg): 2.77
Standard Compliance: **EN54-24:2008**



PA AIW50T

System type: In-Wall Speaker
Drivers: 1" tweeter - 5" woofer
Rated Noise Power 100h: 12 W
Power Rating @ 100V: 12 / 6 / 3 W
Power Rating @ 70V: 6 / 3 / 1.5 W
Impedance: 850 / 1.7K / 3.4K Ω @ 100V
850 / 1.7K / 3.4K Ω @ 70V
Connector: Ceramic Terminal Block
Power Selection: On terminal block
Frequency Response: (-10 dB) 120 - 20k Hz (on wall)
Sensitivity at 1W (1 kHz, 1m / 4m): 89 / 77 dB
Max SPL (1 kHz, 1m / 4m): 100 / 88 dB
Coverage Angle at 500 / 1k / 2k / 4k Hz (-6dB): 130° / 130° / 120° / 90°
Cabinet: White (RAL 9016)
Material: ABS / Aluminium
Environmental Type: A (IP32C)
Operating Temperature: -10 \div +55 °C (+14 \div +131 °F)
Relative Humidity: < 95%
Dimensions (mm): 280 x 192 x 77 (W x H x D)
Mounting: In-wall or on surface with AIW50FRAME
Weight (kg): 1.62
Standard Compliance: **EN54-24:2008**



PA AIW50FRAME

This optional accessory allows to install the AIW50T on the surface of concrete or brick walls.

ARTIA SERIES



PA AC61T

System type: Ceiling Speaker
Drivers: 1" tweeter - 6" woofer
Rated Noise Power 100h: 12 W
Power Rating @ 100V: 12 / 6 / 3 W
Power Rating @ 70V: 6 / 3 / 1.5 W
Impedance: 850 / 1.7K / 3.4K Ω @ 100V
850 / 1.7K / 3.4K Ω @ 70V
Connector: Ceramic Terminal Block
Power Selection: On terminal block
Frequency Response: (-10 dB) 200 - 20k Hz (on wall)
Sensitivity at 1W (1 kHz, 1m / 4m): 95 / 83 dB
Max SPL (1 kHz, 1m / 4m): 105 / 93 dB
Coverage Angle at 500 / 1k / 2k / 4k Hz(-6dB): 120° / 120° / 90° / 60°
Cabinet: White (RAL 9016)
Material: ABS / Aluminium
Environmental Type: A (IP44C)
Operating Temperature: -10 ÷ +55 °C (+14 ÷ +131 °F)
Relative Humidity: < 95%
Dimensions (mm): 186 x 114 (ø x D)
Mounting: ø 166mm cut out
Weight (kg): 1.07
Standard Compliance: **EN54-24:2008**



PA AC60T

System type: Ceiling Speaker
Drivers: 6" dual cone full range
Rated Noise Power 100h: 12 W
Power Rating @ 100V: 12 / 6 / 3 W
Power Rating @ 70V: 6 / 3 / 1.5 W
Impedance: 850 / 1.7K / 3.4K Ω @ 100V
850 / 1.7K / 3.4K Ω @ 70V
Connector: Ceramic Terminal Block
Power Selection: On terminal block
Frequency Response: (-10 dB) 120 - 20k Hz (on wall)
Sensitivity at 1W (1 kHz, 1m / 4m): 94 / 82 dB
Max SPL (1 kHz, 1m / 4m): 104 / 92 dB
Coverage Angle at 500 / 1k / 2k / 4k Hz(-6dB): 120° / 120° / 90° / 45°
Cabinet: White (RAL 9016)
Material: ABS / Aluminium
Environmental Type: A (IP32C)
Operating Temperature: -10 ÷ +55 °C (+14 ÷ +131 °F)
Relative Humidity: < 95%
Dimensions (mm): 186 x 74 (ø x D)
Mounting: ø 166mm cut out
Weight (kg): 0.81
Standard Compliance: **EN54-24:2008**

SPEAKERS FOR EN54 EVAC APPLICATIONS



PA CS-700WBS

Outdoor / Indoor sound projector EN 54-24 BS 5839 Part 8
Loudspeaker: treated polypropylene 6.5" twin cone
Power: 15/10/5/2.5W @ 100V
15W @ 8Ω
Frequency response: 120Hz-20kHz (-10dB)
SPL (1W/m): 92dB
SPL MAX (Pmax @ 1m): 105dB
Coverage angle 1kHz/4kHz (-6dB): 130°/30°
Colour: White
Material: ABS UL94V0
Dimensions (WxHxD): Ø198-H250mm
Weight: 2.35 kg
Assembly: U-shaped bracket
Ceramic terminal with thermal fuse
Protection rating: IEC 60529 IP66
Certification: EN 54-24 / 1488-CPR-0312/W



PA PHS-81T30BS

Outdoor / Indoor horn speaker EN 54-24 BS 5839 Part 8
Power: 30/15/7.5/3.75W @ 100V
Frequency response: 340Hz-9kHz
SPL (1W/m): 108dB
SPL MAX (Pmax @ 1m): 123dB
Coverage angle 2kHz: 60°
Dimensions: Ø212-H280mm
Material: ABS UL94V0
Colour: light grey
Weight: 2.35 kg
Assembly: U-shaped bracket
Ceramic terminal with thermal fuse
Protection rating: IEC 60529 IP66
Certification: EN 54-24 / 1488-CPR-0314/W



AUDIO SYSTEMS

AUDIO SYSTEMS



PA MATRIX88

- 8 Inputs 8 Outputs audio matrix
- 8 music inputs (4 lines and 4 Mic/line) freely selectable in each of the 8 outputs
- One local balanced input with gain control for each zone
- One main microphone with selectable priority
- 8 Alarm contacts
- One EM IN input for an external message generator with selectable priority function
- 8 RJ45 ports for CAT5 connection of 8 remote controls (one for each zone)
- 2 RJ45 ports for CAT5 connection of 2 paging consoles
- Separate level controls for each zone
- Display for viewing the selected input channel on each zone
- Internal speaker for zone listening
- 230/117V~ 50/60Hz power supply
- 24Vdc Emergency power supply
- RS485 Communication
- Up to 4 matrixes that can be connected in cascade (32-zone system)
- 19" standard 3U rack



PA R88

Remote Control Panel for MATRIX88
Allows for local volume adjustment and the selection of the sound source to be listened to.
CAT5 connection to the MATRIX88 station.
Provide local 24Vdc power supply for distances greater than 50 metres from the station.
Wall recessed box included.
Frequency response: 50Hz-18kHz
Power consumption: 400mA
Weight: 0.73Kg
Dimensions (WxHxD): 86x86x33mm



PA R88L

Remote Control Panel for MATRIX88 with Integrated mixer.
Allows the local volume adjustment, selection of the sound source to listen and local sound source input. It also allows you to insert a line input and a microphone input, both provided with level control, in the audio zone which it is assigned to.
CAT5 connection to MATRIX88 station.
Provide local 24Vdc power supply for distances greater than 50 metres from the station. Separate recessed box included.
MIC Input Sensitivity: 10mV
Aux Input Sensitivity: 335mV
Aux Output: 775mV
Frequency response: 50Hz-18kHz
Power consumption: 400mA
Weight: 0.153Kg
Dimensions (WxHxD): 86x146x33mm



PA LOC02

Remote wall panel, fitted with two XLR microphone inputs, which works in conjunction with the MATRIX88 central unit. It allows the two connected microphones to operate in the audio zone which the remote control is assigned to. You can silence the music programme coming from the central unit (MATRIX88) with the MUTE key and allow the playback of only the signal coming from the two microphone inputs. For each microphone input, the panel allows for the separate adjustment of volumes and tone levels. The connection between the panel and matrix is made using a UTP CAT5 cable, which is also used to power the panel by means of the matrix up to a distance of 50 metres; greater distances may require local additional power supply (+24Vdc). LOC02 has a dedicated recessed wall metal box.
MIC Input Sensitivity: 10mV
Frequency response: 50Hz-18kHz
Signal-to-Noise Ratio: MIC ≥ 65 dB - BGM ≥ 75 dB
Power consumption: 400mA
Weight: 0.161Kg
Dimensions (WxHxD): 86x146x33mm



PA RBOX1

Metal box for wall mounting R88 module



PA RBOX2

Metal box for wall mounting R88L and LOC2 modules



PA BM8X8

Digital Microphone Base for MATRIX88 announcements
SPL (1W/m): 4mV/Pa
Frequency response: 150Hz-8kHz
Power Supply: 24Vdc
300 mm cardioid gooseneck
Output connector: RJ45
Dimensions (WxHxD): 232x61x131mm
Weight: 0.95 kg



PA EXBM8X8

Expansion unit for BM8X8 paging console. If you wish to expand a system to 16-24-32 zones, the BM8X8 call console must be fitted with 16-24-32 zone selection buttons for the paging operations. Note: The BM8X8 can be connected with a maximum of 3 EXBM8X8 modules, in cascade.



PA ZONE8

8-Zone Voice/Music management system
 5 switched music inputs (Tape-CD-Tuner-AUX1-AUX2)
 Total level control of the call stations
 Music signal level control.
 ON/OFF controls to activate music on the zones
 LED light of zone occupied by the microphone call
 Priority input for emergency alert microphone.
 Command to activate two-tone siren according to DIN33404
 Line output for possible total recording of events.
 6 RJ45 inputs for CAT5 connection of the microphone stations
 (max 18 micro bases).
 Audio output on the 8 zones presettable at 100V or 0dB
 depending on the configuration used.
 24Vdc bypass command available for each zone for local volume
 attenuators.
 3 audio inputs with automatic activation (VOX) respectively for:
 automatic/additional free input telephone calls/messages.
 230 V~ - 24Vdc power supply for emergency.
 ZONE8 uses 3 operating configurations:

- A With unique amplifier - Call in the relevant zone/Music present in the zones only with system in stand-by.
- B With two amplifiers - Call in the relevant zone/Music always present even in the zones not concerned by the call.
- C With eight or more amplifiers - Call in the relevant zone/Music always present in the zones not concerned by the call. Large installation system.



PA BM01

Digital Microphone Base for general announcements
 Makes the microphone call only in general mode. ALL key to engage the zones in general mode, TALK key to make the speakerphone announcements with the relative activation LED lights.



PA BM04

Digital Microphone Base for 4-zone announcements
 Makes the microphone call on the individual zones or in general mode. ALL key to engage the zones in general mode, TALK key to make the speakerphone announcements with relative activation LED lights. Additional four/eight/sixteen keys to select the microphone call on as many zones. The zone activation is highlighted by its LED.



CONFERENCE SYSTEMS

CONFERENCE SYSTEMS



WCS1000RXV2

The WCS1000 system is the Proel solution for all debate or conference applications in small, medium or large structures in which the use of a wired system is not convenient or feasible. Thanks to the 256 supported bases and the wide WCS1000 transmission range, it is the ideal choice to ensure full freedom of use and extreme simplicity and rapidity of installation with no wiring.

WCS1000RX Main receiving unit

PLL UHF - 5 active channels (1 president - 4 delegate)

Three operating modes: FIFO, LIMIT MODE, PRESIDENT

Two rack units

Dimensions (WxHxD): 485x85x355mm

Weight: 7 kg



WCS1000DV2

Delegate microphone station for WCS1000 series wireless conference system

Base with removable batteries and rechargeable via the

WCS1000CH charging case

PLL UHF Transmitter

One-way condenser microphone

Three function keys

Microphone on button

Power supply: 3 x 1.5V batteries

RF coverage: 50 metres

Frequency range: 610-670MHz

16 selectable channels

Dimensions (HxWxD): 58x178x115mm

Weight: 0.7 kg



WCS1000CV2

President microphone station for WCS1000 series wireless conference system

Base with removable and rechargeable batteries via the WCS1000CH charging case

PLL UHF Transmitter

One-way condenser microphone

Priority key

Three function keys

Microphone on button

Power supply: 3 x 1.5V batteries

RF coverage: 50 metres

Frequency range: 610-670MHz

16 selectable channels

Dimensions (HxWxD): 58x178x115mm

Weight: 0.7 kg



WCS1000CHV2

Battery charger case for WCS1000 system.

Ability to recharge 16 microphone stations.

Consumption: 200W

Maximum charge current: 700mA

Charge time: approx. 10 hours

Dimensions (HxWxD): 175x620x370mm

Weight: 9 kg

Portable with handle



PA DWSKIT

Wireless Discussion system composed of DWS receiving unit with four BMW wireless bases and battery charger.

Dual Display

Navigation keys

Level control of each individual microphone base

Infrared technology for setting the operating frequency

Mixed balanced and unbalanced output

Individual outputs for each channel

Channelled frequency mode or Tuning

Separate Squelch control for each individual Band

Wireless console with display and light ring to indicate the operational condition

Capacity: 50/60m

Metal case with 1 standard 19" rack unit

Two frequency ranges available: a: 610÷670 MHz

b: 730÷790MHz



PA CONFD

Conference and discussion system made in digital technology in compliance with IEC914 and ISO Standards.

Power supply and direct control of 64 microphone units

President base with priority

Three modes of operation of interventions: FREE MODE, LIMIT MODE and FIFO MODE

One MICRO and one LINE Input for external units

TAPE outputs for recording and LINE for room amplification (balanced and unbalanced)

Possibility of inserting an audio processor in the chain

Microphone SPL (1W/m) level control

Unit monitor loudspeaker level control



PA BMCD

President microphone unit with "SPEAK" key, "PRIORITY" key and LED light of electret condenser microphone activated functions mounted on flexible stem with light ring, built-in monitoring loudspeaker with volume control, headphone jack. 2m Long Y-connector cable provided.

Base Dimensions (WxHxD): 235x54x110mm

Gooseneck length: 390mm

Weight: 1.15 kg



PA BMDD

Delegate microphone unit with "SPEAK" key and LED light of electret condenser microphone activated functions mounted on flexible stem with light ring, built-in monitoring loudspeaker with volume control, headphone jack. 2m Long Y-connector cable provided.

Base Dimensions (WxHxD): 235x54x110mm

Gooseneck length: 390mm

Weight: 1.15 kg

CONFERENCE SYSTEMS



PA EXCONFD

Expansion unit for CONFED system. Each expansion unit can be connected with a maximum of 60 bases spread over 6 lines (never exceed 30 units per line). Using four expansion units, the system can control up to a maximum of 254.



PA CVMF13

MALE-FEMALE 13 m 8-Pin extension cable



PA CVMF6

MALE-FEMALE 6 m 8-Pin extension cable



PA CVMF3

MALE-FEMALE 3 m 8-Pin extension cable



PA CVMM3

MALE-MALE 3 m 8-Pin extension cable



PORTABLE SYSTEMS



PA MEG25

ABS handheld / shoulder belt megaphone
Power: 25W
Power Supply: 8x C type batteries not supplied
Autonomy: approx. 15 hours
Dimensions: Ø230 - H350mm
Weight: 1.65 kg



AMPLIFIERS

AMPLIFIERS



PA AMP35E

Compact amplifier: 35W, 4/ Ω -70/100V
Speakers overload and short-circuit protection circuit • Led start-up indicator
Main level control (Master)
Separated Level Controls for 1÷2 and AUX inputs
Bass and Treble tone adjustment
2 MIC / MIC Phantom 48V / LINE inputs balanced on Euroblock terminals
1 AUX Line RCA Input • MIC 1 Input with priority function
4 outputs, two at constant impedance (8/4 Ω) and two at constant voltage (70/100V)
Power Supply 100-120V~ 50/60Hz (select 115V) or 220-240V~ 50/60Hz (select 230V)
Weight 4.3 Kg



PA AMP60E

Compact amplifier: 60W, 4/ Ω -70/100V
Speakers overload and short-circuit protection circuit • Led start-up indicator
Main level control (Master)
Separated Level Controls for 1÷2 and AUX inputs
Bass and Treble tone adjustment
2 MIC / MIC Phantom 48V / LINE inputs balanced on Euroblock terminals
1 AUX Line RCA Input • MIC 1 Input with priority function
4 outputs, two at constant impedance (8/4 Ω) and two at constant voltage (70/100V)
Power Supply 100-120V~ 50/60Hz (select 115V) or 220-240V~ 50/60Hz (select 230V)
Weight 5.3 Kg



PA AMP160XL

Professional mixer amplifier 160W - 70/100V- 4 Ω
Speaker short-circuit and overload protection circuit
LED power indicator
LED level indicator
Master volume control
Separate level controls for inputs 1÷5
Low and high tone adjustment
Lit knobs
4 MIC/MIC Phantom 24/LINE balanced inputs on Euroblock terminal
3 AUX switchable inputs from front selector
1÷4 Inputs with VOX priority function / Contact on other inputs (selectable by dip-switch)
MAIN - IN/OUT function
3 outputs, one of which at constant 4 Ω impedance and two at constant voltage (70/100V)
Independent CHIME function for each input (routing)
REC OUT output on RCA
Balanced line level output on Euroblock terminal
230/117V~ 50/60Hz autoswitch power supply
Fins to fasten to a provided 1U 19" rack
Dimensions (WxHxD): 439x44x300 mm
483x44x300 mm - 1U 19" rack



PA AMP03VR

Compact amplifier 30W, outputs 4/8/16Ω - 100V
 MP3 file recorder/player module
 Two MIC inputs
 One PHONO/AUX input switchable by selector
 LED power indicator
 Master volume control
 Separate MIC1 and MIC2 microphone volume controls
 AUX volume control
 Low and high tone adjustment
 Screw for earth connection
 Four outputs, three of which at constant voltage (100V/70V/25V)
 and one at constant impedance (4W)
 MIC1 input priority function
 Optional vehicle kit with amplifier fixing bracket and fused power
 cable
 Power supply: 230/117V~ 50-60Hz, 12Vdc
 Weight: 4.5 Kg



PA AMP240V4

Four-zone mixer amplifier for 240W overall power.
 Four output zones at 100V selectable independently through a
 front keyboard
 Constant impedance outputs (4W) and constant voltage outputs (25,
 70, 100 V)
 Four MIC/LINE inputs with combo XLR/Jack 6.3mm
 24V Phantom power supply on 4 MIC inputs
 MIC1 input with vocal activation priority function - VOX
 One PRE-OUT output
 One AMP-IN input
 One RCA input
 One LINE OUT output
 Output level indication LED range
 Hold On and Monitor Outputs
 LED peak signal indicator
 Input LED signal presence indicator for telephone station call
 Low and high tone adjustment Master output volume control
 Volume control for each zone
 Five independent controls for input signals (INPUT 1÷INPUT 5)
 Screw for earth connection
 Rear power supply selector 230/117 V~
 Power supply: 230/117 V~ 50-60 Hz 24 Vdc
 Fins to fasten to a provided 19" 2U rack
 Dimensions (WxHxD): 420x 88x340mm
 483x88x340mm - 19" 2U rack
 Weight: 11.8 kg

AMPLIFIERS



PA AUP160D

Professional power unit 160W - 70/100V- 4Ω
Speaker short-circuit and overload protection circuit
LED power indicator
LED level indicator
Master volume control
Low and high tone adjustment
Lit knobs
Balanced LINE input on Euroblock terminal
Balanced LINE output on Euroblock terminal
3 outputs, one of which at constant 4Ω impedance and two at constant voltage (70/100V)
230/117V~ 50/60Hz autoswitch power supply
Fins to fasten to a provided 1U 19" rack
Dimensions (WxHxD): 439x44x300mm
483x44x300mm - 1U 19" rack



PA AUP240R

Professional power unit, 240W, 8Ω and 50/70/100V outputs
Inputs for one or more BM101 pre-amplified microphone bases with VOX priority function
Additional priority contact command
Connectors for Line signal input
Input for telephone station call
Low and High tone control
Master control
Constant impedance (8Ω) and constant voltage (50/70/100V) outputs
Additional outputs 100V and 24Vdc present only with Paging function
PA-HF filter inserted at the rear
Ground-lift rear selector
230/117Vca 50/60Hz power supply selector
24Vdc emergency power supply
Dimensions (WxHxD): 483x88x300mm - 19" 2U rack
Weight: 13 kg



PA AUP4125S

4-channel power unit without transformers
Power 4x125W. 4/8Ω 70/100V Outputs
4 constant impedance outputs (4Ω)
4 constant voltage outputs (70/100V) made electronically without the use of output transformers
One balanced input for each channel
One priority balanced input with independent level control for each channel
Independent master control for each channel.
Low and High tone control independent over the 4 channels
Rear insertion independent PA-HF filter for each channel
LED protection indicator
LED signal presence indicator
LED operating mode indicator (4 Ω/70V/100V)
Switching power supply in SMPS technology (switch mode power supply)
Fins to fasten to a provided 19" 2U rack
Power Consumption: 1000VA
Power supply: 230V~ / 117V~ 50-60Hz
Dimensions (WxHxD): 434 x 88.5x425mm - 19" 2U rack
Weight: 9.75 kg



PA AUP4250S

4-channel power unit without transformers.
Power 4x250W. 4/8Ω 70/100V Outputs
4 constant impedance outputs (4Ω)
4 constant voltage outputs (70/100V) made electronically without the use of output transformers
One balanced input for each channel
One priority balanced input with independent level control for each channel
Independent master control for each channel.
Low and High tone control independent over the 4 channels
Rear insertion independent PA-HF filter for each channel
LED protection indicator
LED signal presence indicator
LED operating mode indicator (4 Ω/70V/100V)
Switching power supply in SMPS technology (switch mode power supply) Fins to fasten to a 19" 2U rack
Power Consumption: 2000VA
Power supply: 230V~ / 117V~ 50-60 Hz
Dimensions (WxHxD): 434x88.5x425mm - 19" 2U rack
Weight: 10.35 kg



DPX1200PFC

2-Channel Class D Power Amplifier with SMPS and PFC
STEREO / BRIDGE / PARALLEL
Frequency response (+0.5/-0.5 dB): 20 Hz - 20 KHz
Output power (THD<1% 1kHz) 2Ω: 4Ω: 2x 600 W
Output power (THD<1% 1kHz) 4Ω: 8Ω: 2x350W
BRIDGE output power 8Ω: 1200W
Power supply 100-240 VAC 50/60 Hz (±10%)
Dimensions (WxHxD): 483x89x255mm - 19" 2U rack
Weight: 3.8 kg



DPX1700PFC

2-Channel Class D Power Amplifier with SMPS and PFC
STEREO / BRIDGE / PARALLEL
Frequency response (+0.5/-0.5 dB): 20 Hz - 20 KHz
Output power (THD<1% 1kHz) 2Ω: 4Ω: 2x 850 W
Output power (THD<1% 1kHz) 4Ω: 8Ω: 2x500W
BRIDGE output power 8Ω: 1700W
Power supply 100-240 VAC 50/60 Hz (±10%)
Dimensions (WxHxD): 483x89x255mm - 19" 2U rack
Weight: 3.8 kg



DPX2500PFC

2-Channel Class D Power Amplifier with SMPS and PFC
STEREO / BRIDGE / PARALLEL
Frequency response (+0.5/-0.5 dB): 20 Hz - 20 KHz
Output power (THD<1% 1kHz) 2Ω: 4Ω: 2x 1250 W
Output power (THD<1% 1kHz) 4Ω: 8Ω: 2x700W
BRIDGE output power 8Ω: 2500W
Power supply 100-240 VAC 50/60 Hz (±10%)
Dimensions (WxHxD): 483x89x255mm - 19" 2U rack
Weight: 4.2 kg





PRE-AMPLIFIERS, MIXER AND PROCESSORS

PRE-AMPLIFIERS, MIXER AND PROCESSORS



PA AMIX54Z

Stereo Matrix/Mixer with 5 line/micro inputs with addressable multimedia module (Tuner FM - MP3 reader)
Five mic/line inputs on balanced COMBO and RCA Stereo
Independent gain control over input channels 1~5 by means of a rear trimmer
Phantom +48V that can be deselected for each input
LED CLIP indicator for each channel input
INPUT1 priority function over the other inputs that can be disabled
Dip-switch (INPUT1~5) to assign the input to the outputs
Independent volume controls (INPUT1~5)
Four balanced stereo zones/outputs on Euroblock terminals
Four signal presence indicators on the outputs
Stereo/Mono selector on each output
Independent volume controls for the four zone outputs
MP3 multimedia player with FM radio freely addressable on the output zones
Ground Lift
Power supply selector 230/117V~ 50/60Hz
Dimensions (WxHxD): 483x44.4x200mm - 19" 1U rack
Weight: 3.4 kg



PA AMIX63

Analogue mixer to mix microphone/line signals, 6 Micro XLR inputs, 3 RCA Line inputs
High-quality design and manufacturing accuracy
Six balanced COMBO mic/line inputs
Three unbalanced RCA stereo line inputs
Line/mic with phantom/mic input type selectors
LED input signal indicators for each channel
Adjustable MIC 1 priority function on the other inputs
Independent gain controls for channels 1~9
Two balanced XLR outputs (Left and Right)
Balanced mono output
RCA type stereo REC output (Left and Right)
LED output signal level indicators (Left and Right)
MASTER volume control
Tone controls
Emergency power terminals (24 V DC)
Power supply selector 230V~ 50/60Hz (AMIX63V117 117V~ 50/60Hz)
Dimensions (WxHxD): 483x44x195mm 19" 1U rack
Weight: 2.9 kg

PA FSHIFTER

Antilarsen processor
Balanced line input on XLR connector
Unbalanced line input on RCA connector
Balanced line output on XLR connector
Unbalanced line output on RCA connector
LED indication of operating mode
Switch power supply 117/230V~ 50/60Hz
Dimensions (WxHxD): 483x44x195mm - 19" 1U Rack
Weight: 32 kg



MQ10FX

Compact 10-input 2-bus mixer with effect
 2 MONO MIC/LINE inputs, 2 STEREO MIC/LINE inputs and 2 STEREO LINE inputs
 4 low-noise, very high-headroom microphone preamplifiers
 PHANTOM power
 'One-knob' COMPRESSOR with LED indicator on MONO channels
 3-band EQ and LO-CUT filter
 1 EFFECT send
 24bit studio-grade digital effect with 100 presets, 2-digit display and footswitch MUTE
 HEADPHONES and CONTROL ROOM outputs
 Electronically balanced MAIN MIX outputs with XLR-M and 1/4" JACK connectors
 Two 8-LED VU-METERS
 Stage-proof construction and ultra-rugged metal chassis



MQ12USB

Compact 12-input 4-bus mixer with effect and USB I/F
 4 MONO MIC/LINE inputs, 2 STEREO MIC/LINE inputs and 2 STEREO LINE inputs
 6 low-noise, very high-headroom microphone preamplifiers
 PHANTOM power
 'One-knob' COMPRESSOR with LED indicator on MONO channels
 3-band EQ with sweep mids and LO-CUT filter
 1 AUX send pre-fader and 1 AUX send post-fader
 24bit studio-grade digital effect with 100 presets, 2-digit display and footswitch MUTE
 Built-in USB interface for PC recording and playback
 GROUPS 1&2 with MIX routing and output
 HEADPHONES and CONTROL ROOM outputs
 Electronically balanced MAIN MIX outputs with XLR-M and 1/4" JACK connectors
 Two 8-LED VU-METERS
 Universal switching power supply 100-250V
 Stage-proof construction and ultra-rugged metal chassis



PC260

2 inputs / 6 outputs DIGITAL SIGNAL PROCESSOR (DSP)
 40 bit floating point resolution CORE DSP
 AD/DA 24bit converter
 110 dB dynamic range
 5-band Parametric EQ for each input and output, including peaking, shelving, notch, resonating HP and LP, allpass and bandpass
 28-band Graphic EQ for each input
 3-band Dynamic EQ for each input
 Programmable COMPRESSOR/LIMITER for each input-output
 600ms delay for each input-output
 Dedicated MIC input for RTA
 Group function - SPL manager
 AES digital input
 PRONET compatible through USB port





AUDIO SOURCES AND RECEIVERS

AUDIO SOURCES AND RECEIVERS



PA SOURCE

CD-USB/MP3 Reader with AM/FM tuner
USB port for MP3 file reading on pen drive
TUNER OUT
Outputs levels: CD/MP3 OUT: 1.2V
TUNER OUT: 1.2V
Controls: CD/MP3 READER CONTROLS
RADIO TUNER CONTROLS
Frequency response:
 CD: 20Hz - 20kHz (-3dB)
 RADIO: 100Hz - 12kHz (-3dB)
Signal/Noise ratio: CD: > 75dB
RADIO: > 65dB
Power supply: 230V~ 50/60Hz (SOURCEUS 117V~ 50/60Hz)
Input/Output connectors: CD/MP3 OUT: 1x RCA L/R
TUNER OUT: 1x RCA L/R
Dimensions (WxHxD): 482x44x250mm - 19" 1U rack
Weight: 3.5 kg

PA ATMP160XL

Combo receiver 160W - 70/100V- 4Ω
USB/SD MMC, BLUETOOTH integrated multimedia module and
Digital AM/FM tuner
Speaker short-circuit and overload protection circuit
LED power indicator
LED level indicator
Master volume control
Separate level controls for inputs 1÷5
Low and high tone adjustment
Lit knobs
4 MIC/MIC Phantom 24/LINE balanced inputs on Euroblock terminal
3 AUX switchable inputs from front selector
1÷4 Inputs with VOX priority function / Contact on other inputs
(selectable by dip-switch)
MAIN - IN/OUT function
3 outputs, one of which at constant 4Ω impedance and two at
constant voltage (70/100V)
Independent CHIME function for each input (routing)
REC OUT output on RCA
Balanced line level output on Euroblock terminal
230/117V~ 50/60Hz autoswitch power supply
Fins to fasten to a provided 19" 2U rack
Dimensions (WxHxD): 439x88x300mm
483x88 x300mm - 19" 2U rack



SOUND SPEAKERS

SOUND SPEAKERS



PA PR10PL

ABS sound projector
Loudspeaker: Full range
Power: 10/5/2.5W @ 100V
Frequency response: 160Hz-16kHz (-10dB)
SPL (1W/m): 91dB
SPL MAX (Pmax @ 1m): 101dB
Coverage angle 1kHz/4kHz (-6dB): 130°/85°
Colour: White (RAL 9010)
Dimensions: Ø138-H190mm
Weight: 1.9 kg
U-type bracket included
Protection rating: IP55



PA PR10PLB

ABS sound projector
Loudspeaker: Full range
Power: 10/5/2.5W @ 100V
Frequency response: 160Hz-16kHz (-10dB)
SPL (1W/m): 91dB
SPL MAX (Pmax @ 1m): 101dB
Coverage angle 1kHz/4kHz (-6dB): 130°/85°
Colour: Black
Dimensions: Ø138-H190mm
Weight: 1.9 kg
U-type bracket included
Protection rating: IP55



PA PR30PL

ABS waterproof sound projector
Loudspeaker: 5" Full range
Power: 30/15/7.5/3.5/1.5W @ 100V 8Ω
Frequency response: 125Hz-15kHz
SPL (1W/m): 101dB
SPL MAX (Pmax @ 1m): 110 dB
Coverage angle 1kHz/4kHz (-6dB): 130°/90°
Colour: White
Dimensions: Ø178-H200mm
Weight: 2.1 kg
U-type bracket included
Protection rating: IP56



PA HSPL30

Music-type ABS waterproof wide-band Hi-Fi horn
Loudspeaker: Full range
Power: 30/15W @ 100V
Frequency response: 120Hz-15kHz (-10dB)
SPL (1W/m): 98dB
SPL MAX (Pmax @ 1m): 113dB
Coverage angle 1kHz/4kHz (-6dB):
H: 110°/80°
V: 90°/80°
Dimensions (WxHxD): 366x172x272mm
U type bracket included
Protection rating: IP56



PA HSPL40

ABS waterproof 2-way Hi-Fi horn
 Loudspeaker: W: 6.5" - T: 1"
 Power: 40/20/10/5W @ 100V
 Frequency response: 120Hz-15kHz (-10dB)
 SPL (1W/m): 98 dB
 SPL MAX (Pmax @ 1m): 114 dB
 Coverage angle 1kHz/4kHz (-6dB):
 H: 110°/80°
 V: 90°/80°
 White (RAL 9010)
 Dimensions (WxHxD): 370x255x291mm
 Weight: 5.6 kg
 U-type bracket included
 Protection rating: IP55



PA WS04

ABS wall speaker
 Loudspeaker: 6" Full range
 Power: 10/5W @ 100V
 Frequency response: 110Hz-13kHz (-10dB)
 SPL (1W/m): 91dB
 SPL MAX (Pmax @ 1m): 101dB
 Coverage angle 1kHz/4kHz (-6dB): 110°/85°
 Colour: White (RAL 9010)
 Dimensions (WxHxD): 240x345x101mm
 Weight: 1.6 kg
 Fixing system by screw



XE65CTX

2-way square wall/ceiling mount speaker in ABS
 Loudspeaker: W: 6.5" - T: 1"
 Power: 40/20/5/2W @ 100V/70V
 45W @ 8Ω
 Frequency response: 70Hz-20kHz (-10dB)
 SPL (1W/m): 87dB
 SPL MAX (Pmax @ 1m): 103dB
 Coverage angle 1kHz/4kHz (-6dB): 145°/80°
 Colour: White (RAL 9010)
 Dimensions (WxHxD): 200x200x77mm
 Weight: 1.7 kg
 Assembly: Ceiling/wall recessed
 Mounting hole (WxH): 176x176mm
 Available in pairs (single price)



PA COVER6X

Metal box for XE65CTX

SOUND SPEAKERS



XE51CT

ABS ceiling recessed speaker
Loudspeaker: 5" Full range
Power: 10/5/2.5W @ 100V
Frequency response: 100Hz-20kHz (-10dB)
SPL (1W/m): 90dB
SPL MAX (Pmax @ 1m): 100 dB
Coverage angle 1kHz/4kHz (-6dB): 130°/100°
Colour: White (RAL 9010)
Dimensions (WxHxD): Ø191.5-H78mm
Weight: 1 kg
Assembly: ceiling recessed
Mounting hole: Ø165mm
Available in pairs (single price)



PA COVERCS

Metal box for XE51CT



PA CSE06T

Metal ceiling speaker
Loudspeaker: 5" Full range
Power: 6/3W @ 100V
Frequency response: 110Hz-15kHz (-10dB)
SPL (1W/m): 90dB
SPL MAX (Pmax @ 1m): 98dB
Coverage angle 1kHz/4kHz (-6dB): 150°/95°
Colour: White (RAL 9010)
Dimensions: Ø204-H85mm
Weight: 0.7 kg
Assembly: ceiling recessed
Mounting hole: Ø175mm



XE65CT

ABS 2-way hi-fi ceiling recessed speaker
Loudspeaker: W: 6.5" - T: 1"
Power: 20/10/5/2.5W @ 100V
Frequency response: 70Hz-20kHz (-10dB)
SPL (1W/m): 87dB
SPL MAX (Pmax @ 1m): 100 dB
Coverage angle 1kHz/4kHz (-6dB): 130°/80°
Colour: White (RAL 9010)
Dimensions: Ø204-H85mm
Weight: 1.2 kg
Assembly: ceiling recessed
Mounting hole: Ø179mm
Available in pairs (single price)



PA CS20SL

ABS two-way hi-fi ceiling recessed speaker and magnetic metal grid.
 Loudspeaker: W: 4" - T: ½"
 Power: 20/10/5W @ 100V
 Frequency response: 100Hz-20kHz (-10dB)
 SPL (1W/m): 88dB
 SPL MAX (Pmax @ 1m): 102dB
 Coverage angle 1kHz/4kHz (-6dB): 130°/120°
 Colour: White (RAL 9010)
 Dimensions: Ø187-H80mm
 Weight: 1.2kg
 Recess Hole: Ø160mm



PA CS30HSL

ABS two-way hi-fi ceiling recessed speaker and magnetic metal grid.
 Loudspeaker: W: 6" T: ¾"
 Power taps: 30/15/7.5W @ 100V
 Frequency response: 60Hz -20KHz
 SPL(1W/m): 89 dB
 SPL MAX (Pmax @ 1m): 105 dB
 Coverage Angle 1KHz/4KHz (-6dB):130°/120°
 Construction materials ABS/Iron
 Colour: White (RAL 9010)
 Dimensions: (Ø x D) 232 x 90 mm
 Weight:1.85Kg
 Recess Hole: 210mm



PA CS6TALEN

Steel recessed speaker with anti flame steel cover, ceramic terminal board and thermal fuse
 Loudspeaker: 6.5" Full range
 Power: 12/6/3W @ 100V
 Frequency response: 100Hz-20kHz (-10dB)
 SPL (1W/m): 90dB
 SPL MAX (Pmax @ 1m): 100 dB
 Coverage angle 1kHz/4kHz (-6dB): 150°/95°
 Colour: White (RAL 9010)
 Dimensions: Ø220-H150mm
 Weight: 1.6 kg
 Assembly: Ceiling recessed
 Mounting hole: Ø205mm



PA CSB10

ABS Ceiling speaker
 Loudspeaker: 5" Full range
 Power: 10/5/2.5W @ 100V-70V
 Frequency response: 110Hz - 15kHz (-10 dB)
 SPL (1W/m): 92dB
 SPL MAX (Pmax @ 1m): 102dB
 Coverage angle 1kHz/4kHz (-6dB): 160°/95°
 Colour: White (RAL 9010)
 Dimensions (WxHxD): Ø184-H162.5mm
 Weight: 1.7 kg
 4.5 metre suspension cable
 Protection rating: IP44

SOUND SPEAKERS



PA CO30S5

Aluminium high directivity column speaker
Loudspeaker: 5x3" ¼
Power: 7.5/15/30 W - 100V
Frequency response: 200Hz-19kHz (-10dB)
SPL (1W/m): 93dB
SPL MAX (Pmax @ 1m): 108dB
Coverage angle 1kHz/4kHz (-6dB): V:70°/20° H:160°/120°
Colour: White
Dimensions (WxHxD): 91x544x88mm
Weight: 3.5 kg



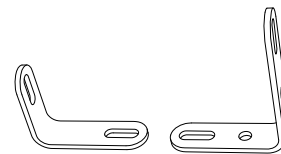
PA CO60S10

Aluminium high directivity column speaker
Loudspeaker: 10x3" ¼
Power: 15/30/60 W @ 100V
Frequency response: 180Hz-18kHz (-10dB)
SPL (1W/m): 93dB
SPL MAX (Pmax @ 1m): 111dB
Coverage angle 1kHz/4kHz (-6dB): V:40°/20° H:160°/120°
Colour: White
Dimensions (WxHxD): 91x94 x88mm
Weight: 6.2 kg



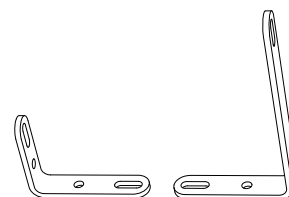
PA CO120S15

Aluminium high directivity column speaker
Loudspeaker: 10x3" ¼
Power: 60/120W
@ 100V Frequency response 170Hz-17kHz (-10dB)
SPL (1W/m): 94dB
SPL MAX (Pmax @ 1m): 115dB
Coverage angle 1kHz/4kHz (-6dB): V:30°/20° H:160°/120°
Colour: White
Dimensions (WxHxD): 91x1339x88mm
Weight: 8.9 kg



PA SC1

Wall bracket for CO series column speakers



PA SC2

Wall bracket for CO series column speakers



PA CO4006

Aluminium high directivity column speaker
Loudspeaker: W: 6x2" - T: 1"
Power: 40/20/10W @ 100V
Frequency response: 180Hz-18kHz (-10dB)
SPL (1W/m): 91dB
SPL MAX (Pmax @ 1m): 107 dB
Coverage angle 1kHz/4kHz (-6dB): V:40°/30° H:170°/140°
Colour: White
Swivel bracket
Dimensions (WxHxD): 67x505x65mm
Weight: 2.2 kg



PA CO4012

Aluminium high directivity column speaker
Loudspeaker: W:12x2" - T: 1"
Power: 40/20/10W @ 100V
Frequency response: 180Hz-18kHz (-10dB)
SPL (1W/m): 93dB
SPL MAX (Pmax @ 1m): 109 dB
Coverage angle 1kHz/4kHz (-6dB): V:30°/25° H:170°/150°
Colour: White
Swivel bracket
Dimensions (WxHxD): 67x828x65mm
Weight: 3.5 kg



SOUND SPEAKERS



PA HS15AL

Aluminium horn speaker
Power: 15/10/5/3/1W @ 100V
Frequency response: 280Hz-12.5kHz (-10dB)
SPL (1W/m): 108dB
SPL MAX (Pmax @ 1m): 120dB
Coverage angle 1kHz/4kHz (-6dB): 90°/60°
Colour: Grey
Dimensions: Ø212.5x229.5mm
Weight: 1.4 kg
U-type bracket included
Protection rating: IP55



PA HS30AL

Aluminium horn speaker
Power: 30/15/10/5/3/1W @ 100V
Frequency response: 250Hz-16kHz (-10dB)
SPL (1W/m): 109dB
SPL MAX (Pmax @ 1m): 124dB
Coverage angle 1kHz/4kHz (-6dB): 90°/60°
Colour: Grey
Dimensions: Ø259x261mm
Weight: 1.8 kg
U-type bracket included
Protection rating: IP55



PA H16R

Long range aluminium round horn, without driver Anti UV treatment
To be used combined with HD60T driver
Coverage angle 1kHz/4kHz (-6dB): 80°/65°
Aluminium body
Colour: Grey
Dimensions: Ø407x325mm
Weight: 1.5 kg
U-type bracket included
Protection rating: IP66



PA HD60T

Waterproof driver unit for "H" series horns
Power: 60/40/20W @ 100V
Frequency response: 200Hz-6kHz (-10dB)
SPL (1W/m): 115dB
SPL MAX (Pmax @ 1m): 133dB
Colour: Grey
Weight: 1.4 kg
Protection rating: IP55



PA HS30

ABS horn speaker
Power: 30/15/10/5/3/1W @ 100V
Frequency response: 250Hz-16kHz (-10dB)
SPL (1W/m): 109dB
SPL MAX (Pmax @ 1m): 124dB
Coverage angle 1kHz/4kHz (-6dB): 95°/65°
Colour: White (RAL 9010)
Dimensions (WxHxD): 287x208x257.5mm
Weight: 1.7 kg
U-type bracket included
Protection rating: IP55



PA STONE

Stone-shape speaker
Loudspeaker: Two-way coaxial W:6.5" - T:1.5"
Power: 15/7.5W @ 100V - 7.5/3.8W @ 70V
Frequency response: 120Hz -15kHz (-10dB)
SPL (1W/m): 95dB
SPL MAX (Pmax @ 1m): 108dB
Coverage angle 1kHz/4kHz (-6dB): 250°/250°
ABS body
Colour: Light grey stone
Dimensions (WxHxD): 259x265x349mm
Weight: 4.3 kg
Protection rating: IP 55



PA FGS20

Hi-Fi garden speaker
Loudspeaker: Two-way coaxial
Power: 30/15/7.5W @ 100V
Frequency response: 80Hz-12kHz (-10dB)
SPL (1W/m): 97dB
SPL MAX (Pmax @ 1m): 110dB
Coverage angle 1kHz/4kHz (-6dB): 360°/360°
ABS body
Colour: Green
Dimensions (WxHxD): 280x400x280mm
Weight: 1.8 kg
Protection rating: IP55

SOUND SPEAKERS



XE35TB

Two-way monitor speaker
Loudspeaker: W: 3.5" T: 1"
Power: 15/7.5/4/2/1W @ 100/70V
30W @ 8Ω

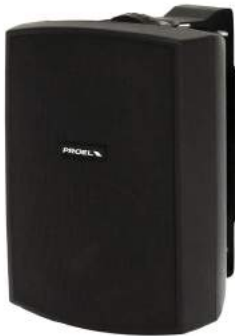
Frequency response: 70Hz-20kHz (-10dB)
SPL (1W/m): 85 dB
SPL MAX (Pmax @ 1m): 97 dB
Coverage angle 1kHz/4kHz (-6dB): 150°/100°
ABS body
Colour: Black
Dimensions (WxHxD): 130x198x130mm
Weight: 1.8 kg
U-type bracket included
Available in pairs (single price)



XE55TB

Two-way monitor speaker
Loudspeaker: W: 5" - T: 1"
Power: 30/10/5/2/1W @ 100/70V
60W @ 8Ω

Frequency response: 70Hz-20kHz (-10dB)
SPL (1W/m): 87dB
SPL MAX (Pmax @ 1m): 101dB
Coverage angle 1kHz/4kHz (-6dB): 140°/90°
ABS body
Colour: Black
Dimensions (WxHxD): 181x240x172mm
Weight: 3 kg
U-type bracket included
Available in pairs (single price)



XE65TB

Two-way monitor speaker
Loudspeaker: W: 6.5" - T: 1"
Power: 40/20/10/5/2W @ 100/70V
60W @ 8Ω

Frequency response: 70Hz-20kHz (-10dB)
SPL (1W/m): 87dB
SPL MAX (Pmax @ 1m): 103dB
Coverage angle 1kHz/4kHz (-6dB): 140°/90°
ABS body
Colour: Black
Dimensions (WxHxD): 217x288x204mm
Weight: 4.2 kg
U-type bracket included
Available in pairs (single price)



PA SNBK

Adjustable wall swivel connection for Monitor line.
Colour Black. Standard package: 2pcs



XE35TW

Two-way monitor speaker

Loudspeaker: W: 3.5" - T: 1"

Power: 15/7.5/4/2/1W @ 100/70V
30W @ 8Ω

Frequency response: 70Hz-20kHz (-10dB)

SPL (1W/m): 85dB

SPL MAX (Pmax @ 1m): 97 dB

Coverage angle 1kHz/4kHz (-6dB): 150°/100°

ABS body

Colour: White

Dimensions (WxHxD): 130x198x130mm

Weight: 1.8 kg

U-type bracket included

Available in pairs (single price)



XE55TW

Two-way monitor speaker

Loudspeaker: W: 5" - T: 1"

Power: 30/10/5/2/1W @ 100/70V
60W @ 8Ω

Frequency response: 70Hz-20kHz (-10dB)

SPL (1W/m): 87dB

SPL MAX (Pmax @ 1m): 101dB

Coverage angle 1kHz/4kHz (-6dB): 140°/90°

ABS body

Colour: White

Dimensions (WxHxD): 181x240x172mm

Weight: 3 kg

U-type bracket included

Available in pairs (single price)



XE65TW

Two-way monitor speaker

Loudspeaker: W: 6.5" - T: 1"

Power: 40/20/10/5/2W @ 100/70V
60W @ 8Ω

Frequency response: 70Hz-20kHz (-10dB)

SPL (1W/m): 87dB

SPL MAX (Pmax @ 1m): 103dB

Coverage angle 1kHz/4kHz (-6dB): 140°/90°

ABS body

Colour: White

Dimensions (WxHxD): 217x288x204mm

Weight: 4.2 kg

U-type bracket included

Available in pairs (single price)



PA SNWH

Adjustable wall swivel connection for Monitor line.

Colour White. Standard package: 2pcs

SOUND SPEAKERS



X50TB

Two-way (1") tweeter XENIA series speaker
Loudspeaker W: 5" - T: 1" (neodymium soft dome horn loaded tweeter)

Power: 50/25/12W @ 100/70V
50W @ 8Ω

Frequency response: 100-20kHz (-10dB)
SPL (1W/m @ 1 kHz): 90dB
SPL MAX (Pmax @ 1m):-
Coverage angle 1kHz/4kHz (-6dB): 140°/90°
ABS body
Colour: Black
Dimensions (WxHxD): 170x280x175mm
Weight: 2.3 kg
Adjustable bracket included
Protection rating: IP55
Available in pairs (single price)



X50TW

Two-way (1") tweeter XENIA series speaker
Loudspeaker W: 5" - T: 1" (neodymium soft dome horn loaded tweeter)

Power: 50/25/12W @ 100/70V
50W @ 8Ω

Frequency response: 100-20kHz (-10dB)
SPL (1W/m @ 1kHz): 90dB
SPL MAX (Pmax @ 1m)
Coverage angle 1kHz/4kHz (-6dB): 140°/90°
ABS body
Colour: White
Dimensions (WxHxD): 170x28 x175mm
Weight: 2.3 kg
Adjustable bracket included
Protection rating: IP55
Available in pairs (single price)



PROFESSIONAL SOUND SPEAKERS

PROFESSIONAL SOUND SPEAKERS



FLASH5PV2

Passive 5" FLASH series speaker 16Ω
2-way system with soft dome tweeter and 5" woofer
Coverage angle: 90°H x 60°V
Impedance: 16Ω
Power Rating (continuous): 80W
Power Rating (peak): 160W
Frequency response: 80Hz-20kHz
SPL (1W/m): 91dB
Weight: 2.5kg
Flying System: 3 x M6 - top/bottom
Material: Polypropylene body
Colour: Black
Dimensions (WxHxD): 175x265x176.5mm



FLASH5PWV2

Passive 5" FLASH series speaker 16Ω
2-way system with soft dome tweeter and 5" woofer
Coverage angle: 90°H x 60°V
Impedance: 16Ω
Power Rating (continuous): 80W
Power Rating (peak): 160W
Frequency response: 80Hz-20kHz
SPL (1W/m): 91dB
Weight: 2.5kg
Flying System: 3 x M6 - top/bottom
Material: Polypropylene body
Colour: White
Dimensions (WxHxD): 175x265x176.5mm



FLASH8XP

Passive 8" FLASH series speaker 8Ω
2-way system with 1.5" driver and 8" woofer
Coverage angle: 90°H x 60°V
Impedance: 8Ω
Power Rating (continuous): 150W
Power Rating (peak): 300W
Frequency response: 70Hz-20kHz
SPL (1W/m): 96dB
Weight: 8.5 kg
Material: Polypropylene body
Colour: Black
Assembly: optional bracket or stand
Dimensions (WxHxD): 270x422x260mm



FLASH12XP

Passive 8" FLASH series speaker 8Ω
2-way system with 2.5" driver and 12" woofer
Coverage angle: 90°H x 60°V
Impedance: 8Ω
Power Rating (continuous): 300W
Power Rating (program): 600W
Frequency response: 70Hz-20kHz
SPL (1W/m): 99dB
Weight: 18.5 kg
Material: Polypropylene body
Colour: Black
Assembly: optional bracket or stand
Dimensions (WxHxD): 390x623x350mm



SPSK105BKF5

Black anodised aluminium support. To be used with FLASH5, FREE1, CO30S5 and CO60S10



FRE300BK

Professional aluminium speaker stand



PROFESSIONAL SOUND SPEAKERS



KP560

Sturdy tubular steel wall support for loudspeakers. The directional mounting bracket allows both horizontal and vertical adjustment.

Height: 250mm

Depth: 390mm

Weight: 2.2 kg

Loading capacity: 35 kg

Colour: Black



KP565

Sturdy tubular steel wall support for loudspeakers. The directional mounting bracket allows both horizontal and vertical adjustment.

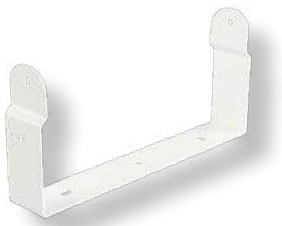
Height: 250mm

Depth: 280mm

Weight: 2.1 kg

Loading capacity: 35 kg

Colour: Black



KPTFL5W

White FLASH5 wall bracket



KPTFL5

Black FLASH5 wall bracket



KPTFL12X

FLASH12 wall bracket



KPTFL8X

FLASH8 wall bracket



S10A

Active SubWoofers 10" – 350W
System type: Hybrid Band Pass subwoofer
Loudspeaker: 10" woofer with 2"VC
Amplifier Continuous Power: 350 W
Frequency Response: 46 Hz - 160 Hz
Max SPL: 119 dB
Connectors: IN: 2 x NEUTRIK COMBO
 OUT: 2 x NEUTRIK XLR-M
 LINK: 2 x NEUTRIK XLR-M
Controls: Volume, GND lift
 X-over Frequency, Phase
Power Supply: 230 VAC or 120 VAC 50/60 Hz
Weight: 14 kg (30.8lb)
Cabinet: 15/18 mm plywood
 Black anti-scratch paint
 1.5 mm metal grille
 2 handles
 1 x pole socket
Dimensions (W x H x D): 315x420x495 mm



S10P

Passive SubWoofers 10" – 400W
System type: Hybrid Band Pass subwoofer
Loudspeaker: 10" woofer with 2"VC
Nominal Impedance: 8 Ω
Power Continuous (AES): 200 W
Power Program: 400 W
Power Peak: 800 W
Frequency Response: 46 Hz - 160 Hz
Sensitivity: 95 dB @ 1 W/1 m
Connectors: 2 x NEUTRIK SPEAKON (IN/LINK)
Cabinet: 15/18 mm plywood
 Black anti-scratch paint
 1.5 mm metal grille
 2 handles
 1 x pole socket
Dimensions (W x H x D): 315x420x495 mm
Weight: 12.5 kg



S15A

1 Active SubWoofers 15" – 600W
System type: Hybrid Band Pass subwoofer
Loudspeaker: 15" woofer with 3"VC
Amplifier Continuous Power: 600 W
Frequency Response: 40 Hz - 160 Hz
Max SPL: 129dB
Connectors: IN: 2 x NEUTRIK COMBO
 OUT: 2 x NEUTRIK XLR-M
 LINK: 2 x NEUTRIK XLR-M
Controls: Volume, GND lift
 X-over Frequency, Phase
Power Supply: 230 VAC or 120 VAC 50/60 Hz
Weight: 26 kg (57.3 lb)
Cabinet: 15/18 mm plywood
 Black anti-scratch paint
 1.5 mm metal grille
 2 handles
 1 x pole socket
 4 x 75 mm wheels
Dimensions (W x H x D): 435x570x560 (660 with wheels) mm



S15P

Passive SubWoofers 15" – 800W
System type: Hybrid Band Pass subwoofer
Loudspeaker: 10" woofer with 2"VC
Nominal Impedance: 8 Ω
Power Continuous (AES): 200 W
Power Program: 400 W
Power Peak: 800 W
Frequency Response: 46 Hz - 160 Hz
Sensitivity: 95 dB @ 1 W/1 m
Connectors: 2 x NEUTRIK SPEAKON (IN/LINK)
Cabinet: 15/18 mm plywood
 Black anti-scratch paint
 1.5 mm metal grille
 2 handles
 1 x pole socket
Dimensions (W x H x D): 315x420x495 mm
Weight: 12.5 kg





LNE SYSTEMS



DS112PT

LNE SYSTEM Low Noise Emission
Two-way high directivity System MTM circular configuration
Input power rating (continuous): 300W (8Ω)
Input power rating (peak): 600W (8Ω)
Power Taps to 100V: 25/50/100W
Impedance: 8Ω
Frequency response: 110Hz-16kHz (-3dB), 80Hz-18kHz (-10dB)
SPL MAX (Pmax @ 1m): 124dB
Low frequencies: 12 x 3.5"
High frequencies: 1 x 1" compression driver
Coverage angle: <78°
Colour: Standard RAL 9007
Colour Custom: (RAL CODE) Minimum 20 pcs
Weight: 9 kg
Dimensions: Ø510-H208mm
Protection rating: IP55



DS112P

LNE SYSTEM Low Noise Emission
Two-way high directivity System MTM circular configuration
Input power rating (continuous): 300W (8Ω)
Input power rating (peak): 600W (8Ω)
Impedance: 8Ω
Frequency response: 110Hz-16kHz (-3dB), 80Hz-18kHz (-10dB)
SPL MAX (Pmax @ 1m): 124dB
Low frequencies: 12 x 3.5"
High frequencies: 1 x 1" compression driver
Coverage angle: <78°
Colour: Standard RAL 9007
Colour Custom: (RAL CODE) Minimum 20 pcs
Weight: 9 kg
Dimensions: Ø510-H208mm
Protection rating: IP55



MICROPHONES

MICROPHONES



PA BM101

General announcement active call station with automatic compressor, dynamic microphone, programmable talk button (PTT or ON/OFF), level output adjustment trimmer, chime level trimmer, selectable 2 or 3 tone chime and smart priority management. Power supply from RJ45 cable or 24Vdc local adaptor.



PA BM102

General announcement call station with dynamic microphone, Push to talk button and priority output contact (Normally Open).



PA BMG2

Table microphone base, with gooseneck microphone with light ring
Sensitivity: $-40\text{dB} \pm 2\text{dB} / 100\Omega \pm 30\%$
Frequency response: 40Hz-20kHz (-3dB)
Power supply: Phantom 48Vdc Batteries 3V (2x AA)
Gooseneck length: 445 mm
Switch: ON-OFF
Connector: XLR
Dimensions (WxHxD): 115x140x30mm
Weight: 0.7 kg



PA MIC62W

Boundary condenser microphone
table or wall low profile
Condenser capsule
One-way
Frequency response: 60Hz-16kHz
Sensitivity: $-36 \pm 3\text{dB} @ 1\text{kHz}$
Impedance: $200\Omega \pm 30\% - @1\text{kHz}$
Voltage: 9V~52Vdc
Cable length: 4.56m
Weight: 0.250Kg (without cable)
Dimensions (WxHxD): 75x20x100mm
Colour: White



PA MG400

One-way electret gooseneck microphone
 Sensitivity: 7mV/Pa
 Impedance: 200Ω balanced
 Frequency response: 150Hz-18kHz (-3dB)
 Phantom power supply: 12-52Vdc
 Gooseneck length: 400mm
 Connector: XLR
 Dimensions: H400mm



PA MG500

One-way, electret gooseneck microphone
 Sensitivity: 7mV/Pa
 Impedance: 200Ω balanced
 Frequency response: 150Hz-18kHz (-3dB)
 Phantom power supply: 12-52Vdc
 Gooseneck length: 500mm
 Connector: XLR
 Dimensions: H500mm



PA BM103T

Microphone base for gooseneck MG300/400/500,
 connectors XLR-3P. BISTABLE ON/OFF KEY



PA BMS4

Metal base, table mounting by screws, XLR connector



DM580LC

Hand-held dynamic microphone
 Dynamic capsule
 Cardioid type polar response
 Suitable for vocal applications
 Metal heavy duty construction
 ON/OFF switch for on-stage control
 Metal grid with foam internal filter for reducing wind noise
 5 metre XLR cable included
 Frequency response (+/- 3dB): 70Hz - 14kHz
 Sensitivity 1 kHz: -55dB +/-3dB
 Impedance: 600Ω
 Weight: 0.275Kg
 Dimensions: Ø50-L195mm



DST110BK

Heavy duty cast-iron triangular table base with telescopic rod
 Base dimensions: 160x180mm
 Minimum height: 400mm
 Maximum height: 560mm
 Weight: 3.06 kg
 Rod length: 330/490mm
 Colour: Matte black base with black tube

MICROPHONES



APM20

Special ABS stand for microphone (ØMin-Max: 22-26mm)



APM40

5/8"-3/8" universal adapter for microphone stands



APM30

ABS microphone clip holder (Ø Min-Max: 20-32mm)



APM35B

Large ABS stand for microphone (ØMin-Max: 30-35mm)



OST110BK

Heavy cast iron triangular table base with telescopic rod
Base dimensions: Ø300mm
Minimum height: 950mm
Maximum height: 1650mm
Weight: 5.1 kg
Colour: Matte black



RSM200BK

Telescopic giraffe rod for microphones
Base dimensions: Ø700mm
Minimum height: 950mm
Maximum height: 1600mm
Weight: 2.7 kg
Colour: Matte black
Telescopic giraffe: 565/860mm



RMW921M

PLL UHF WIRELESS BELT-PACK MICROPHONE SYSTEM – HEADSET
 Dual band - TRUE DIVERSITY
 821-832 & 863 -865 Mhz frequency range
 PLL transmission
 50 meter / 100 feet range
 50 Hz -15 KHz frequency response
 Condenser headset with cardioid capsule
 99 selectable channels
 Up to 6 frequency usable in the same location
 ABS carrying and storage case
 Auto scan channels
 BNC Antennas



EKADP01

19" Rack Adapter For RMW921 Systems



RMW921H

PLL UHF WIRELESS HANDHELD MICROPHONE SYSTEM
 Dual band - TRUE DIVERSITY
 821-832 & 863 -865 Mhz frequency range
 PLL transmission
 50 meter / 100 feet range
 50 Hz -15 KHz frequency response
 Condenser headset with cardioid capsule
 99 selectable channels
 Up to 6 frequency usable in the same location
 ABS carrying and storage case
 Auto scan channels
 BNC Antennas



ANT700

Directional UHF antenna 630 -700MHz

PA UHF SPLITAL

Active UHF antenna active distributor
 Working frequency: 600-740MHz
 Power Supply: 110-230V~ 50/60Hz - 12Vdc adapter
 Dimensions (WxHxD): 482x44x200mm
 Weight: 1.7 kg



CVS
PROGRAM



RACK AND ACCESSORIES

RACK AND ACCESSORIES



STUDIORKXL08

19" Standard 8 Unit professional Rack container, matt black painted steel, 4 castors
Dimensions (WxHxD): 560x467x580mm
Weight: 17,9 Kg



PXCOVER08N

Plexiglass door for 8-unit STUDIORKXL



STUDIORKXL12

19" Standard 12 Unit professional Rack container, matt black painted steel, 4 castors
Dimensions (WxHxD): 560x646x580mm
Peso: 21,7 Kg



PXCOVER12N

Plexiglass door for 12-unit STUDIORKXL



STUDIORKXL36

19" Standard 36 Unit professional Rack container, matt black painted steel, 4 castors
Dimensions (WxHxD): 560x1718x580mm
Peso: 39 Kg



PXCOVER36N

Plexiglass door for 36-unit STUDIORKXL



PA STF1

Bracket for heavy apparatus racks using purposes (AUP120/240/480/AUP4125/4250s etc.). Suitable for STUDIORKXL series rack



FSR2260

19" Standard 22 Unit professional Rack container, matt black painted steel, with openable door, sides and back, 4 castors. Top with fan unit with thermostat.
Dimensions (WxHxD): 600x1093x600mm



FSR2760

19" Standard 27 Unit professional Rack container, matt black painted steel, with openable door, sides and back, 4 castors. Top with fan unit with thermostat.
Dimensions (WxHxD): 600x1313x600mm



FSR3260

19" Standard 32 Unit professional Rack container, matt black painted steel, with openable door, sides and back, 4 castors. Top with fan unit with thermostat.
Dimensions (WxHxD): 600x1533x600mm



FSR3760

19" Standard 37 Unit professional Rack container, matt black painted steel, with openable door, sides and back, 4 castors. Top with fan unit with thermostat.
Dimensions (WxHxD): 600x1753x600mm



FSR4260

19" Standard 42 Unit professional Rack container, matt black painted steel, with openable door, sides and back, 4 castors. Top with fan unit with thermostat.
Dimensions (WxHxD): 600x2000x600mm



FSRSHELF02

19" rack metal sliding shelf to be used on the new FSR rack cabinets only Matt black finish

RACK AND ACCESSORIES



PA ACC

50A Circuit breaker main switch 19" Rack panel with 6 VDE sockets.
1 Modular unit height.



SDC308R

1U horizontal feeding bar made of aluminium profile and flame retardant thermoplastic parts. Features n.8 x 16A 230V 2P +G. Schuko outlet with red lighting switch; 2.5 m length 3 x 1.5 mm² power cable and 16A 2P + G Schuko plug (230V, CE 73/23). Max capacity: 3500W. Equipped with universal metal fins, for mounting on 19" rack cabinets.



RK3L

3-unit 19" rack blank panel



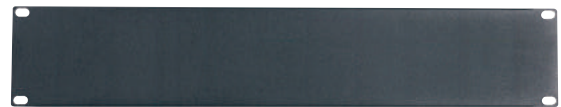
RK4L

4-unit 19" rack blank panel



RK1L

1-unit 19" rack blank panel



RK2L

2-unit 19" rack blank panel



RK1NV

19" 1 rack unit ventilation panel



RK2NV

19" 2 rack unit ventilation panel



RK4N

19" 1U Rack Panel
4 Plug mounting holes for XLR/SPEAKON panel



RK6N

19" 1U Rack Panel
6 Plug mounting holes for XLR/RCA/SPEAKON panel



RK8N

19" 1U Rack Panel
8 Plug mounting holes for XLR/RCA/SPEAKON panel



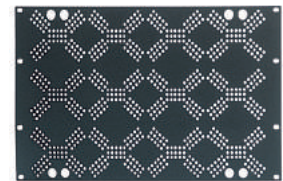
RK12N

19" 1U Rack Panel
12 Plug mounting holes for XLR/RCA/SPEAKON panel



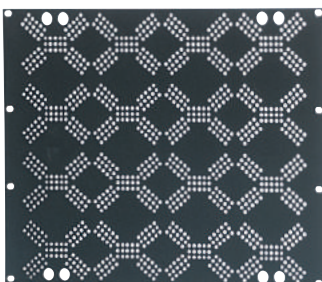
RK2VP

2-unit back protection Rack panel



RK6VP

6-unit back protection Rack panel



RK8VP

8-unit back protection Rack panel

RACK AND ACCESSORIES



ADRK2AZ

19" 2U rack assembly shelf/adaptor



ADRK3AZ

19" 3U rack assembly shelf/adaptor



ADRK3CR

Lockable 19" 3U rack metal drawer



ADRK4CR

Lockable 19" 4U rack metal drawer



VOLUME CONTROLS

VOLUME CONTROLS



PA TRV12A

Recessed volume attenuator for 100V lines. 12W transformer on European square box. With 24Vdc bypass relay.



PA TRV50A

Recessed volume attenuator for 100V lines. 50W transformer on European square box. With 24Vdc bypass relay.



PA TRV6B

Recessed volume attenuator for 100V lines. 6W transformer on 503 box. With 24Vdc bypass relay.



PA TRV30B

Recessed volume attenuator for 100V lines. 30W transformer on 503 box. With 24Vdc bypass relay.



PA TRV60B

Recessed volume attenuator for 100V lines. 60W transformer on 503 box. With 24Vdc bypass relay.



PA TRV120B

Recessed volume attenuator for 100V lines. 120W transformer on 503 box. With 24Vdc bypass relay.



PA TR50ST

Stereo volume attenuator for 4/8/16 Ω speakers, 12 positions, 2x50W maximum power handling, dedicated box for flush mounting.



LINE TRANSFORMERS

LINE TRANSFORMERS



PA TR40

Audio transformer: 100V-24/12/6/3/1.5W
Primary impedance: 416-816-1660-3300-6600Ω
Secondary impedance: 8-4Ω



PA TR100

Audio transformer: 100V-40/20/10/5/2.5W
Primary impedance: 250-490-1000-2000-4000Ω
Secondary impedance: 8-4Ω



PA MATCHBOX

Universal audio adapter and decoupler with isolation transformer.
LINE/LINE - 100V/LINE



CABLES AND CONNECTORS

CABLES AND CONNECTORS



HPC90

Balanced coaxial cable for installation with flexible overall jacket - O.F.C. (Oxygen Free Copper).
Price per metre can be ordered on 100m reels



HPC210BK

"High-quality" balanced microphone cable with flexible overall jacket - O.F.C. (Oxygen Free Copper). Outer diameter 6,5 mm Price per metre can be ordered on 100m reels



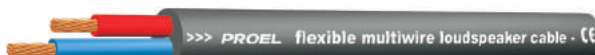
HPC210FR

Balanced microphone cable with flexible flame resistant overall jacket - O.F.C. (Oxygen Free Copper).
Outer diameter 5,6 mm
Price per metre can be ordered on 100m reels



HPC610BK

Flexible 2 twisted conductors (2 x 1,5 mm²) speaker cable, small external diameter.
Price per metre can be ordered on 100m reels



HPC620BK

Flexible 2 twisted conductors (2 x 2,5 mm²) speaker cable, small external diameter.
Price per metre can be ordered on 100m reels

LAN5S

New professional CAT. 5e S-FTP cable for Ethernet connections, featuring unique inner filler to maintain electrical characteristics in portable applications; double shielding manufactured from aluminum-mylar foil and tinned copper braid. Particularly suitable for mobile applications. The outer sleeve is manufactured from polyurethane compound.



HPC813

Single-shielded antenna cable.
Price per metre can be ordered on 100m reels



BULK250LU5

Standard XLR plug/socket professional cable
Length: 5m



BULK250LU10

Standard XLR plug/socket professional cable
Length: 10m



BULK250LU15

Standard XLR plug/socket professional cable
Length: 15m



BULK210LU2

Professional cable with XLR socket/6,3 mm stereo jack connectors
Length: 2m



CHLP250LU15

Stereo adapter cable with 2 RCA plugs/2 RCA plugs
Length: 1,5 mm



CHLP260LU15

Adapter cable with RCA plug/XLR plug
Length: 1,5 mm



CHLP270LU15

Adapter cable with RCA plug/XLR socket
Length: 1,5 mm

CABLES AND CONNECTORS



XLR3FVPRO

€ 2,30

Professional 3-pole XLR cable mount female socket, nickel plated die cast aluminium shell and nickel plated aluminium coupling ring



XLR3MVPRO

€ 2,30

Professional 3-pole XLR cable mount male plug, nickel plated die cast aluminium shell and nickel plated aluminium coupling ring



XLR5FVPRO

€ 4,80

5-pole XLR cable mount female socket, nickel plated



XLR5MVPRO

€ 4,80

5-pole XLR cable mount male plug, nickel plated



MRCA25BK

€ 2,90

RCA cable mount male plug with gold plated contacts, black aluminium shell and Ø 6.2 mm flexible cable spring



AT290

€ 3,60

Professional metal adapter: 3-pole XLR female socket -> Ø 6.3 mm. mono jack male plug



AT510

€ 5,00

Professional metal adapter: 3-pole XLR female socket -> RCA male plug



S5CPRO

€ 2,40

Ø6.3mm Stereo jack, nickel plated brass shell and flexible cable spring



NL4FC

€ 13,60

Neutrik, Professional "SPEAKON" 4-pole female cable mount connector with cable strain relief for Ø4-7mm cable - 30A continuous by contact



NL2FX

€ 8,50

Neutrik, Professional "SPEAKON" 2-pole female cable mount connector with cable strain relief for Ø4-7mm cable - 30A continuous by contact



NL2MP

€ 5,90

Neutrik 'SPEAKON' panel mount male receptacle with small square flange, air tight. 2 poles



NL4MP

€ 5,20

Neutrik 'SPEAKON' panel mount male receptacle with small square flange, air tight. 4 poles



FRCA20RD

€ 5,00

RCA panel socket. Colour Red



FRCA20WH

€ 5,00

RCA panel socket. Colour White



XLR3MDL

€ 3,00

3-pole XLR panel mount solder aluminium male receptacle



XLR3FDL

€ 3,00

3-pole XLR panel mount solder aluminium female receptacle with latch
Colour: Nickel



XLR5MDL

€ 4,00

5-pole XLR panel mount solder aluminium male receptacle



XLR5FDL

€ 4,00

5-pole XLR panel mount solder aluminium female receptacle with latch
Colour: Nickel



NE8FDV

€ 25,50

Neutrik RJ45 panel mount female receptacle

ALPHABETICAL INDEX

CODE	PAGE
ADRK2AZ	70
ADRK3AZ	70
ADRK3CR	70
ADRK4CR	70
AE300	6
AE604	6
ANT700	63
APM20	62
APM30	62
APM35B	62
APM40	62
AT290	78
AT510	78
BULK210LU2	77
BULK250LU10	77
BULK250LU15	77
BULK250LU5	77
CHLP250LU15	77
CHLP260LU15	77
CHLP270LU15	77
DM580LC	61
DPX1200PFC	31
DPX1700PFC	31
DPX2500PFC	31
DS112P	58
DS112PT	58
DST110BK	61
EKADP01	63
FLASH12XP	52
FLASH5PV2	52
FLASH5PWV2	52
FLASH8XP	52
FRCA20RD	79
FRCA20WH	79

CODE	PAGE
FRE300BK	53
FSR2260	67
FSR2760	67
FSR3260	67
FSR3760	67
FSR4260	67
FSRSHELF02	67
HPC210BK	76
HPC210FR	76
HPC610BK	76
HPC620BK	76
HPC813	76
HPC90	76
KP560	54
KP565	54
KPTFL12X	54
KPTFL5	54
KPTFL5W	54
KPTFL8X	54
LAN5S	76
MQ10FX	35
MQ12USB	35
MRCA25BK	78
NE8FDV	79
NL2FX	78
NL2MP	79
NL4FC	78
NL4MP	79
OST110BK	62
PA 48VDC12A	9
PA A31TB - PA A31TW	12
PA A51TB - PA A51TW	12
PA AC60T	15
PA AC61T	15

CODE	PAGE
PA ACC	68
PA AELAB	8
PA AEM5Z	8
PA AES8Z	8
PA AH50T	14
PA AIW50FRAME	14
PA AIW50T	14
PA AMIX54Z	34
PA AMIX63	34
PA AMP03VR	29
PA AMP160XL	28
PA AMP240V4	29
PA AMP35E	28
PA AMP60E	28
PA AP50T	13
PA AP52T	13
PA ATMP160XL	38
PA AUP160D	30
PA AUP240R	30
PA AUP4125S	30
PA AUP4250S	30
PA BM01	20
PA BM04	20
PA BM101	60
PA BM102	60
PA BM103T	61
PA BM8X8	19
PA BMCD	23
PA BMDD	23
PA BMG2	60
PA BMS4	61
PA C0120S15	44
PA C030S5	44
PA C04006	45

CODE	PAGE
PA C04012	45
PA C060S10	44
PA CONFD	23
PA COVER6X	41
PA COVERCS	42
PA CS-700WBS	16
PA CS20SL	43
PA CS30HSL	43
PA CS6TALEN	43
PA CSB10	43
PA CSE06T	42
PA CVMF13	24
PA CVMF3	24
PA CVMF6	24
PA CVMM3	24
PA DBE01	7
PA DBE06	7
PA DBE108	7
PA DBE108E	7
PA DBEVF	7
PA DM250/550/750	9
PA DWSKIT	23
PA EV MCL1Z	8
PA EV MCL2Z	8
PA EXBM8X8	19
PA EXCONFD	24
PA FGS20	47
PA FSHIFTER	34
PA H16R	46
PA HD60T	46
PA HS15AL	46
PA HS30	47
PA HS30AL	46
PA HSPL30	40

CODE	PAGE
PA HSPL40	41
PA LOC02	18
PA MATCHBOX	74
PA MATRIX88	18
PA MDAC8	9
PA MDACTV	9
PA MEG25	26
PA MG400	61
PA MG500	61
PA MIC62W	60
PA PHS-81T30BS	16
PA PR10PL	40
PA PR10PLB	40
PA PR30PL	40
PA R88	18
PA R88L	18
PA RBOX1	19
PA RBOX2	19
PA SC1	44
PA SC2	44
PA SNBK	48
PA SNWH	49
PA SOURCE	38
PA STF1	66
PA STONE	47
PA TR100	74
PA TR40	74
PA TR50ST	72
PA TRV120B	72
PA TRV12A	72
PA TRV30B	72
PA TRV50A	72
PA TRV60B	72
PA TRV6B	72

CODE	PAGE
PA UHFSPITAL	63
PA WS04	41
PA ZONE8	20
PC260	35
PXCOVER08N	66
PXCOVER12N	66
PXCOVER36N	66
RK12N	69
RK1L	68
RK1NV	68
RK2L	68
RK2NV	68
RK2VP	69
RK3L	68
RK4L	68
RK4N	69
RK6N	69
RK6VP	69
RK8N	69
RK8VP	69
RMW921H	63
RMW921M	63
RSM200BK	62
S10A	55
S10P	55
S15A	55
S15P	55
S5CPRO	78
SDC308R	68
SPSK105BKF5	53
STUDIORKXL08	66
STUDIORKXL12	66
STUDIORKXL36	66
WCS1000CHV2	22

ALPHABETICAL INDEX

CODE	PAGE
WCS1000CV2	22
WCS1000DV2	22
WCS1000RXV2	22
X50TB	50
X50TW	50
XE35TB	48
XE35TW	49
XE51CT	42
XE55TB	48
XE55TW	49
XE65CT	42
XE65CTX	41

CODE	PAGE
XE65TB	48
XE65TW	49
XLR3FDL	79
XLR3FVPRO	78
XLR3MDL	79
XLR3MVPRO	78
XLR5FDL	79
XLR5FVPRO	78
XLR5MDL	79
XLR5MVPRO	78



PROEL

ITALY

Proel Lab Spa
Acquaviva Picena

UK

Proel International Ltd.
London

KOREA

Proel Korea Co. Ltd.
Gyunggi-Do

MALAYSIA

Proel Malaysia Snd. Bhd.
Petaling Jaya

USA

Proel North America Inc.
Los Angeles

TUNISIE

Proel Tunisia Sarl
Tunisi

PROEL SPA

(Worldwide Headquarters)
Via alla Ruenia, 37/43
64027 Sant'Omero (TE) - ITALY
Tel. +39 0861 81241
Fax +39 0861 887862
P.I. 00778590679
N.Reg.AEE IT 0802000002762

info@proel.com
www.proel.com

