

Centrum Nauki i Techniki, Białostok
ul. Wybrzeże Kosciuszakowskie, Tamka, most Świętokrzyski, ul. Zajączka
w Praga, Marienplatz, Pl. Tychy Krzyży, T...

COMMERCIAL AUDIO PRODUCT GUIDE

PROEL 



PROEL 

EN54 Evacuation systems	5
Speakers for EN54 evac applications	11
Audio systems	15
Intercoms	21
Conference systems	23
Portable systems	27
Amplifiers	31
Pre-amplifiers/Mixers and processors	35
Receivers and audio sources	39
Sound speakers	41
Professional sound speakers	53
LNE Systems	59
Microphones	61
Rack and accessories	69
Volume controls	75
Line transformers	77
Cables and connectors	79

INDEX





EN54 EVACUATION SYSTEMS

EN54 EVACUATION SYSTEMS



AE604

Wall mounted All-In-One voice alarm system compliant with **EN54-16** with testing and charge circuit compliant with **EN54-4**.

4 Zones System on redundant loudspeaker line and back up Amplifier.

Main and backup amplifier in class D "Pure Path"[™].

300W @ 100V on redundant loudspeaker line (A + B). The system does not require a line end resistor.

The system ensures full power performance even with backup power.

Processing circuit by DSP; balanced and isolated background music input, isolated and balanced background music microphone input with selectable 48Vdc phantom power supply and priority activation by contact; monitored input for remote emergency call stations; front panel fitted with monitor loudspeaker, monitored emergency PPT microphone, direct sending message keys, navigation keys, large display with LCD dot matrix. Line output for active sub-woofer; audio messages stored on uSD 16bit 48kHz: 8 general purpose messages with activation from dedicated input. contacts or incorporated scheduler, 8 monitored contacts for emergency announcement activation.

4 12Vdc batteries 18Ah not included.

**Availability: 3° quarter*



AE300

Wall mounted All-In-One voice alarm system compliant with **EN54-16** with testing and charge circuit compliant with **EN54-4**.

Main and backup amplifier in class D "Pure Path"[™]

300W @ 100V on redundant loudspeaker line (A + B). The system does not require a line end resistor.

The system ensures full power performance even with backup power.

Processing circuit by DSP; balanced and isolated background music input, isolated microphone input with selectable 48Vdc phantom power supply and priority activation by contact; monitored input for remote emergency call stations; front panel fitted with monitor loudspeaker, monitored emergency PPT microphone, direct sending message keys, navigation keys, large display with LCD dot matrix.

Line output for active sub-woofer; audio messages stored on uSD 16 bit 48kHz: 8 general purpose messages with activation from dedicated input contacts or incorporated scheduler, 2 monitored contacts for emergency announcement activation.

4 12Vdc batteries. 7.2Ah not included

Dimensions (WxHxD): 440x495x155mm

Certification EN 54-16



PA DBE01

Fully monitored desk call station according to **EN54-16**. Software programmable "Talk" key, "Busy" and "System" LEDs, dynamic gooseneck microphone, automatic compressor, level adjustment trimmer Wiring by Rj45 connector and CAT5 Cable.



PA DBE06

Fully monitored desk call station according to **EN54-16**. Software programmable capacitive selection keys, "Talk" and "Busy" Keys, "System" LEDs, dynamic gooseneck microphone, automatic compressor, level adjustment trimmer Wiring by Rj45 connector and CAT5 Cable. Power supply from RJ45 cable or 24Vdc local adaptor.



PA DBE108

Fully monitored desk call station according to **EN54-16**. 10 keys dial keyboard, "Talk" and "Clear" key, 3 Evac activation keys, touch screen quarter VGA TFT display, dynamic gooseneck microphone, DSP audio processing. All keys and functions are software programmable. Wiring by Rj45 connector and CAT5 Cable. Power supply from RJ45 cable or 24Vdc local adaptor.



PA DBE108E

Fully monitored Ethernet desk call station according to **EN54-16**. Connects to networkable Proel Evac System. 10 keys dial keyboard, "Talk" and "Clear" key, 3 Evac activation keys, touch screen quarter VGA TFT display, dynamic gooseneck microphone, DSP audio processing. All keys and functions are software programmable. Wiring by Rj45 connector and CAT5 Cable. Power supply from RJ45 cable or 24Vdc local adaptor.



PA DBEVF

Fully monitored, wall-mount, red metal box, **EN54-16** Firemen's call station with handheld PTT Microphone. Fully software programmable, with status LEDs. Access to the security and fire alarm features system is granted by a key-lock. "EVAC" and "ALARM" Remote Message Activation Button. Wiring by Rj45 connector and CAT5 Cable. Power supply from RJ45 cable or 24Vdc local adaptor.

EN54 EVACUATION SYSTEMS



PA EV PROM5Z

Digital Master matrix certified **EN 54-16**
Up to 5 slots for direct plug-in modules for the Amplifier/line control .
Up to 108 zones (54 with dual-line architecture for zone A/B)
LCD display with navigation knobs for the complete unit control Led
Power, Fault Warning and Voice Alarm
Front USB socket for PC interface purposes
24 Vdc power supply input
Spare amplifier input
Two RJ45 connectors for the Slave matrix connecting purposes
Two RJ45 connectors for the microphone units connecting (up to 108 microphone units)
Two contact activation messages and in/out programmable connectors
Common fault out
2 rack unit 19" Standard
Certificazione EN54-16



PA EV MCL1Z

Zone module for amplifier/line control to be inserted in the Master EV PROM5Z or Slave EV PROS8Z matrix



PA EV PROS8Z

EN54-16 certified slave matrix
Up to 8 directly insertable modules for amplifier/line control
Power LED
Fault Warning and Voice Alarm
24Vdc power supply input
Backup amplifier input
Four RJ45 connectors for connection to the Master matrix and subsequent Slave matrix
2 standard 19" rack units
Certificazione EN54-16



PA EV MCL2Z

Zone module for the control of the second line in the same zone amplifier, to be inserted in the Master EV PROM5Z or Slave EV PROS8Z matrix



PA MDA500

Modular Professional Power Unit 500W - 70/100V- 4Ohm
 Speaker short-circuit and overload protection circuit
 Clipping Dynamic control
 LED indicators
 Master Level control
 Low and high tone adjustment
 Balanced LINE input on Euroblock terminal
 Priority Balanced LINE input on Euroblock terminal with Gain
 Three outputs, one of which at constant 4Ohm impedance and two at
 Constant voltage (70/100V) on Euroblock terminal
 PA-HF Filter with rear switch
 Ground-Lift rear selector
 230/117V~ 50/60Hz autoswitch power supply
 24Vdc emergency power supply
 Dimensions (WxHxD): 116x53x250mm
 Weight: 2.4Kg
 Maximum 8 modules in a rack case MDA8C (3U rack 19")



PA MDAC8

8 units rack case (3U rack 19") for MDA series

EN54 EVACUATION SYSTEMS



PA 24VDC6A

Back-up power supply control system.

Provides the back-up power supply to maintain the system in operation when there is no mains power supply.

24V input for external back-up batteries (not provided). Battery capacity 40 Ah.

The built-in charger controls the power supply circuit when the AC supply operates correctly. In case of no mains power supply, all system devices will be automatically powered by the 24VDC batteries. The system controls the power supply circuit both for the mains power supply and for battery operation by communicating the power supply status and any faults to the unit.

EN54-4 certified system

230V/50Hz power supply

Certificazione EN54-4

PA 24VDC12A

Back-up power supply control system.

Provides the back-up power supply to maintain the system in operation when there is no mains power supply.

24V input for external back-up batteries (not provided). Battery capacity 150 Ah.

The built-in charger controls the power supply circuit when the AC supply operates correctly. In case of no mains power supply, all system devices will be automatically powered by the 24VDC batteries. The system controls the power supply circuit both for the mains power supply and for battery operation by communicating the power supply status and any faults to the unit.

EN54-4 certified system 230V/50Hz power supply.

Certificazione EN54-4



SPEAKERS FOR EN54 EVAC APPLICATIONS

SPEAKERS FOR EN54 EVAC APPLICATIONS



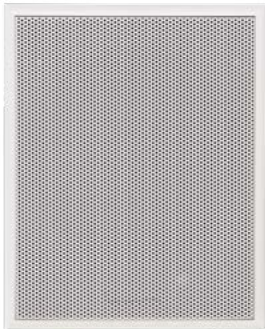
PA CS-540BS

False ceiling speaker EN 54-24 BS 5839 Part 8
Loudspeaker: 5" full range
Power: 6/3/1.5W @100V
Frequency response: 180-20kHz
SPL (1W/m): 92dB
SPL MAX (Pmax @ 1m): 99dB
Coverage angle 1kHz/4kHz (-6dB): 120°/100°
Colour: White
Dimensions: Ø185-H129mm
Complete with steel flame arrester cap
Material: Steel
Recess hole: Ø165mm
Weight: 1.5 kg
Ceramic terminal with thermal fuse
Certification: EN 54-24



PA CSE-6206EN

False ceiling speaker, with twin cone with EN 54-24 flame arrester net.
Loudspeaker: 6.5" full range
Power: 6/3/1.5W @100V
Frequency response (-10dB): 90-20kHz
SPL (1W/m): 93dB
SPL MAX (Pmax @ 1m): 100dB
Coverage angle 1kHz/4kHz (-6dB): 120°/60°
Colour: White
Dimensions: Ø220-H101.5mm
Weight: 1.13 kg
Recess Hole: Ø190mm
Ceramic Terminal with thermal fuse.
Material: Steel
Certification: EN 54-24



PA CS-651WTBS

Wall speaker, twin cone, EN 54-24 BS 5839 Part 8
Loudspeaker: 6.5" full range
Power: 6/3/1.5W @ 100V
Frequency response: 150-20kHz
SPL (1W/m): 89dB
SPL MAX (Pmax @ 1m): 96dB
Coverage angle 1kHz/4kHz (-6dB): 160°/80°
Dimensions (WxHxD): 200x250x85mm
Material: ABS
Colour: White
Weight: 1.75 kg
Ceramic terminal with thermal fuse
Certification: EN 54-24



PA WSI-501BS

Wall speaker EN 54-24
Loudspeaker: 5" full range
Power: 6/3/1.5W
Frequency response: 150-18kHz (-10dB)
SPL (1W/m): 91dB
SPL MAX (Pmax @ 1m): 99dB
Coverage angle 1kHz/4kHz (-6dB): 160°/100°
Dimensions (WxHxD): 276x78.5x197mm
Ceramic terminal with thermal fuse
Material: Steel
Weight: 2.15 kg
Certification: EN 54-24



PA CT-552WTBS

2-WAY wall speaker EN 54-24 BS 5839 Part 8

Loudspeaker: W: 5" - T: 1"

Power: 30/15W/7.5/3.75W @ 100V
30W @ 8Ω

Frequency response: 80Hz-20kHz

SPL (1W/m): 89dB

SPL MAX (Pmax @ 1m): 104dB

Coverage angle 1kHz/4kHz (-6dB): 1180°/80°

Dimensions (WxHxD): 192x242x190mm

Material: ABS UL94V0

Colour: White

Weight: 2.5 kg

Ceramic terminal with thermal fuse

Certification EN 54-24



PA CT-552BTBS

2-WAY wall speaker EN 54-24 BS 5839 Part 8

Loudspeaker: W: 5" - T: 1"

Power: 30/15W/7.5/3.75W @ 100V
30W @ 8Ω

Frequency response: 80Hz-20kHz

SPL (1W/m): 89dB

SPL MAX (Pmax @ 1m): 104dB

Coverage angle 1kHz/4kHz (-6dB): 180°/80°

Dimensions (WxHxD): 192x242x190mm

Material: ABS UL94V0

Colour: Black

Weight: 2.5 kg

Ceramic terminal with thermal fuse

Certification EN 54-24



PA SPJ-53WHBS

Outdoor / Indoor metal sound projector

EN 54-24 BS 5839 Part 8

Loudspeaker: 5" Treated polypropylene and mylar HC

Power: 20/10/5W @ 100V

Frequency response: 130Hz-20kHz (-10dB)

SPL (1W/m): 91dB

SPL MAX (Pmax @ 1m): 103dB

Coverage angle 1kHz/4kHz (-6dB): 130°/60°

Colour: White

Material: Aluminium

Dimensions: Ø140 - H207mm

Weight: 2.5 kg

Assembly: U-shaped bracket

Ceramic terminal with thermal fuse

Protection Rating: IEC 60529 IP66

Certification: EN 54-24



PA SPJ-52WHBS

2-way Outdoor / Indoor metal sound projector

EN 54-24 BS 5839 Part 8

Loudspeaker: 2x5" Treated polypropylene + mylar HC

Power: 20/10/5W @ 100V

Frequency response: 120Hz-20kHz (-10dB)

SPL (1W/m): 89dB

SPL MAX (Pmax @ 1m): 102dB

Coverage angle 1kHz/4kHz (-6dB): 130°/50°

Colour: White

Material: Aluminium

Dimensions: Ø140 - H207mm

Weight: 2.5 kg

Ceramic terminal with thermal fuse

Protection rating: IEC 60529 IP66

Certification: EN 54-24

SPEAKERS FOR EN54 EVAC APPLICATIONS



PA CS-700WBS

Outdoor / Indoor sound projector EN 54-24 BS 5839 Part 8

Loudspeaker: treated polypropylene 6.5" twin cone

Power: 15/10/5/2.5W @ 100V

15W @ 8Ω

Frequency response: 120Hz-20kHz (-10dB)

SPL (1W/m): 92dB

SPL MAX (Pmax @ 1m): 105dB

Coverage angle 1kHz/4kHz (-6dB): 130°/30°

Colour: White

Material: ABS UL94V0

Dimensions (WxHxD): Ø198-H250mm

Weight: 2.35 kg

Assembly: U-shaped bracket

Ceramic terminal with thermal fuse

Protection rating: IEC 60529 IP66

Certification: EN 54-24



PAPHS-81T30BS

Outdoor / Indoor horn speaker EN 54-24 BS 5839 Part 8

Power: 30/15/7.5/3.75W @ 100V

Frequency response: 340Hz-9kHz

SPL (1W/m): 108dB

SPL MAX (Pmax @ 1m): 123dB

Coverage angle 2kHz: 60°

Dimensions: Ø212-H280mm

Material: ABS UL94V0

Colour: light grey

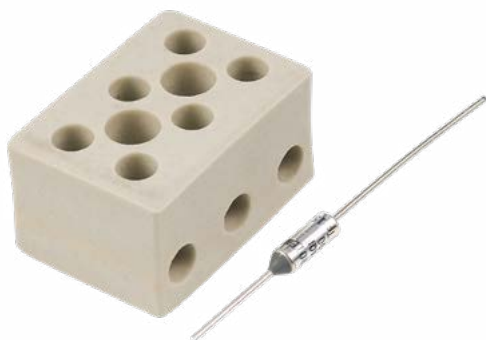
Weight: 2.35 kg

Assembly: U-shaped bracket

Ceramic terminal with thermal fuse

Protection rating: IEC 60529 IP66

Certification: EN 54-24



PA KITEVAC

Kit consisting of three-pole ceramic terminal board and 152° thermal fuse



AUDIO SYSTEMS

AUDIO SYSTEMS



PA MATRIX88

8 Inputs 8 Outputs audio matrix
8 music inputs (4 lines and 4 Mic/line) freely selectable in each of the 8 outputs
One local balanced input with gain control for each zone
One main microphone with selectable priority
8 Alarm contacts
One EM IN input for an external message generator with selectable priority function
8 RJ45 ports for CAT5 connection of 8 remote controls (one for each zone)
2 RJ45 ports for CAT5 connection of 2 paging consoles
Separate level controls for each zone
Display for viewing the selected input channel on each zone
Internal speaker for zone listening
230/117V~ 50/60Hz power supply
24Vdc Emergency power supply
RS485 Communication
Up to 4 matrixes that can be connected in cascade (32-zone system)
19" standard 3U rack



PA R88

Remote Control Panel for MATRIX88
Allows for local volume adjustment and the selection of the sound source to be listened to.
CAT5 connection to the MATRIX88 station.
Provide local 24Vdc power supply for distances greater than 50 metres from the station.
Wall recessed box included.
Frequency response: 50Hz-18kHz
Power consumption: 400mA
Weight: 0.73Kg
Dimensions (WxHxD): 86x86x33mm



PA R88L

Remote Control Panel for MATRIX88 with Integrated mixer.
Allows the local volume adjustment, selection of the sound source to listen and local sound source input. It also allows you to insert a line input and a microphone input, both provided with level control, in the audio zone which it is assigned to.
CAT5 connection to MATRIX88 station.
Provide local 24Vdc power supply for distances greater than 50 metres from the station. Separate recessed box included.
MIC Input Sensitivity: 10mV
Aux Input Sensitivity: 335mV
Aux Output: 775mV
Frequency response: 50Hz-18kHz
Power consumption: 400mA
Weight: 0.153Kg
Dimensions (WxHxD): 86x146x33mm



PA LOC02

Remote wall panel, fitted with two XLR microphone inputs, which works in conjunction with the MATRIX88 central unit. It allows the two connected microphones to operate in the audio zone which the remote control is assigned to. You can silence the music programme coming from the central unit (MATRIX88) with the MUTE key and allow the playback of only the signal coming from the two microphone inputs. For each microphone input, the panel allows for the separate adjustment of volumes and tone levels. The connection between the panel and matrix is made using a UTP CAT5 cable, which is also used to power the panel by means of the matrix up to a distance of 50 metres; greater distances may require local additional power supply (+24Vdc). LOC02 has a dedicated recessed wall metal box.
MIC Input Sensitivity: 10mV
Frequency response: 50Hz-18kHz
Signal-to-Noise Ratio: MIC ≥ 65 dB - BGM ≥ 75 dB
Power consumption: 400mA
Weight: 0.161Kg
Dimensions (WxHxD): 86x146x33mm



PA RBOX1

Metal box for wall mounting R88 module



PA RBOX2

Metal box for wall mounting R88L and LOC2 modules



PA BM8X8

Digital Microphone Base for MATRIX88 announcements
SPL (1W/m): 4mV/Pa
Frequency response: 150Hz-8kHz
Power Supply: 24Vdc
300 mm cardioid gooseneck
Output connector: RJ45
Dimensions (WxHxD): 232x61x131mm
Weight: 0.95 kg



PA EXBM8X8

Expansion unit for BM8X8 paging console. If you wish to expand a system to 16-24-32 zones, the BM8X8 call console must be fitted with 16-24-32 zone selection buttons for the paging operations. Note: The BM8X8 can be connected with a maximum of 3 EXBM8X8 modules, in cascade.

AUDIO SYSTEMS



PA ZONE8

8-Zone Voice/Music management system
5 switched music inputs (Tape-CD-Tuner-AUX1-AUX2)
Total level control of the call stations
Music signal level control.
ON/OFF controls to activate music on the zones
LED light of zone occupied by the microphone call
Priority input for emergency alert microphone.
Command to activate two-tone siren according to DIN33404
Line output for possible total recording of events.
6 RJ45 inputs for CAT5 connection of the microphone stations
(max 18 micro bases).
Audio output on the 8 zones presettable at 100V or 0dB
depending on the configuration used.
24Vdc bypass command available for each zone for local volume
attenuators.
3 audio inputs with automatic activation (VOX) respectively for:
automatic/additional free input telephone calls/messages.
230 V~ - 24Vdc power supply for emergency.
ZONE8 uses 3 operating configurations:

- A With unique amplifier - Call in the relevant zone/Music present in the zones only with system in stand-by.
- B With two amplifiers - Call in the relevant zone/ Music always present even in the zones not concerned by the call.
- C With eight or more amplifiers - Call in the relevant zone/Music always present in the zones not concerned by the call. Large installation system.

PA ZONE8SLAVE

16-zone extension panel for ZONE8
ON/OFF controls to activate music on the zones
Occupied zone LED light.
Audio output on the 8 zones presettable at 100V or 0dB depend-
ing on the configuration used.
24Vdc bypass command available for each zone for local volume
attenuators.
230V~ 50/60Hz - 24Vdc power supply for emergency.



PA BM01

Digital Microphone Base for general announcements
Makes the microphone call only in general mode. ALL key to engage the zones in general mode, TALK key to make the speakerphone announcements with the relative activation LED lights.



PA BM04

Digital Microphone Base for 4-zone announcements
Makes the microphone call on the individual zones or in general mode. ALL key to engage the zones in general mode, TALK key to make the speakerphone announcements with relative activation LED lights. Additional four/eight/sixteen keys to select the microphone call on as many zones. The zone activation is highlighted by its LED.



PA BM08

Digital Microphone Base for 8-zone announcements
Makes the microphone call on the individual zones or in general mode. ALL key to engage the zones in general mode, TALK key to make the speakerphone announcements with relative activation LED lights. Additional four/eight/sixteen keys to select the microphone call on as many zones. The zone activation is highlighted by its LED.



PA BM16

Digital Microphone Base for 16-zone announcements
Makes the microphone call on the individual zones or in general mode. ALL key to engage the zones in general mode, TALK key to make the speakerphone announcements with relative activation LED lights. Additional four/eight/sixteen keys to select the microphone call on as many zones. The zone activation is highlighted by its LED.





INTERCOMS

INTERCOMS



PA INCOM

Intercom for Counters

Full-duplex or Half-duplex operating modes

Level and gain control on both channels

+3dB command for temporary doubling of the user-side power

Integrated antilarsen device

Inputs: 1x MIC

Outputs: 1x LINE, 1x REC, 1x SPEAKER

Output level: LINE: 500mV / 600Ω - REC: 500mV / 600Ω

Controls: 1 volume control for external loudspeaker -

1 volume control for internal loudspeaker - 1 level control VOX - PA

CALL - SPEAK +3dB - PRIORITY SWITCHES

Frequency response: 300Hz-10kHz (-3dB)

S/N Ratio: > 80dB

Microphone: One-way Electret

Power supply: 230/14V~

Gooseneck length: 330mm

Dimensions (W x H x D): 268x131x61mm

Weight: 1 kg



CONFERENCE SYSTEMS

CONFERENCE SYSTEMS



WCS1000RXV2

The WCS1000 system is the Proel solution for all debate or conference applications in small, medium or large structures in which the use of a wired system is not convenient or feasible. Thanks to the 256 supported bases and the wide WCS1000 transmission range, it is the ideal choice to ensure full freedom of use and extreme simplicity and rapidity of installation with no wiring.

WS1000RX Main receiving unit

PLL UHF - 5 active channels (1 president - 4 delegate)

Three operating modes: FIFO, LIMIT MODE, PRESIDENT

Two rack units

Dimensions (WxHxD): 485x85x355mm

Weight: 7 kg



WCS1000CV2

President microphone station for WCS1000 series wireless conference system

Base with removable and rechargeable batteries via the WCS1000CH charging case

PLL UHF Transmitter

One-way condenser microphone

Priority key

Three function keys

Microphone on button

Power supply: 3 x 1.5V batteries

RF coverage: 50 metres

Frequency range: 610-670MHz

16 selectable channels

Dimensions (HxWxD): 58x178x115mm

Weight: 0.7 kg



WCS1000DV2

Delegate microphone station for WCS1000 series wireless conference system

Base with removable batteries and rechargeable via the WCS1000CH charging case

PLL UHF Transmitter

One-way condenser microphone

Three function keys

Microphone on button

Power supply: 3 x 1.5V batteries

RF coverage: 50 metres

Frequency range: 610-670MHz

16 selectable channels

Dimensions (HxWxD): 58x178x115mm

Weight: 0.7 kg



WCS1000CH

Battery charger case for WCS1000 system.

Ability to recharge 16 microphone stations.

Consumption: 200W

Maximum charge current: 700mA

Charge time: approx. 10 hours

Dimensions (HxWxD): 175x620x370mm

Weight: 9 kg

Portable with handle



PA DWSKIT

Wireless Discussion system composed of DWS receiving unit with four BMW wireless bases and battery charger.

Dual Display

Navigation keys

Level control of each individual microphone base

Infrared technology for setting the operating frequency

Mixed balanced and unbalanced output

Individual outputs for each channel

Channelled frequency mode or Tuning

Separate Squelch control for each individual Band

Wireless console with display and light ring to indicate the operational condition

Capacity: 50/60m

Metal case with 1 standard 19" rack unit

Two frequency ranges available: a: 610÷670 MHz

b: 730÷790MHz



PA CONFD

Conference and discussion system made in digital technology in compliance with IEC914 and ISO Standards.

Power supply and direct control of 64 microphone units

President base with priority

Three modes of operation of interventions: FREE MODE, LIMIT MODE and FIFO MODE

One MICRO and one LINE Input for external units

TAPE outputs for recording and LINE for room amplification (balanced and unbalanced)

Possibility of inserting an audio processor in the chain

Microphone SPL (1W/m) level control

Unit monitor loudspeaker level control



PA BMCD

President microphone unit with "SPEAK" key, "PRIORITY" key and LED light of electret condenser microphone activated functions mounted on flexible stem with light ring, built-in monitoring loudspeaker with volume control, headphone jack. 2m Long Y-connector cable provided.

Base Dimensions (WxHxD): 235x54x110mm

Gooseneck length: 390mm

Weight: 1.15 kg



PA BMDD

Delegate microphone unit with "SPEAK" key and LED light of electret condenser microphone activated functions mounted on flexible stem with light ring, built-in monitoring loudspeaker with volume control, headphone jack. 2m Long Y-connector cable provided.

Base Dimensions (WxHxD): 235x54x110mm

Gooseneck length: 390mm

Weight: 1.15 kg

CONFERENCE SYSTEMS



PA EXCONFD

Expansion unit for CONFED system. Each expansion unit can be connected with a maximum of 60 bases spread over 6 lines (never exceed 30 units per line). Using four expansion units, the system can control up to a maximum of 254.



PA CVMF13

MALE-FEMALE 13 m 8-Pin extension cable



PA CVMF6

MALE-FEMALE 6 m 8-Pin extension cable



PA CVMF3

MALE-FEMALE 3 m 8-Pin extension cable



PA CVMM3

MALE-MALE 3 m 8-Pin extension cable



PORTABLE SYSTEMS

PORTABLE SYSTEMS



PA FREE1

Shoulder amplified system.
35W Amplifier
BLUETOOTH interface
USB/SD-card reader with illuminated alphanumeric display and separate volume control
1 UHF wireless microphone (band 863-865MHz) - separate volume control
1 mic in with 6.3 mm jack - separate volume control
1 line in with 3.5 mm jack - separate volume control
2-way loudspeakers
Built-in lead-acid battery operation
12Vdc / 3AH (duration up to 3 hours)
Switching power supply included
Indication of the charging status
Sturdy ABS cabinet, with handle and M6 thread belt for dedicated optional rod mounting SPSK105BKFS
Protective shoulder bag with front opening to allow use during operation



FREE10LT

Compact and portable battery operated combined amplification system.
Includes one MP3 reader with USB port, SD slot and BLUETOOTH connection, equipped with wide display and remote control.
UHF PLL wireless module (863-865 MHz)
Including MEDIA PLAYER with USB port, SD slot and BLUETOOTH audio connection, LCD display and IR remote control
2 MIC/LINE + 1 STEREO LINE inputs,
1 LINE output
Controls: HIGH + LOW EQ
Built-in EFFECT
Amplifier: 120W
1" horn loaded compression driver an 10" woofer
3/4 hours of battery operation



PA PROX

Battery powered mobile amplified system
 Two horn loudspeakers on pole
 Prof. handheld VHF wireless microphones, compartment for second wireless microphone receiver (opt.)
 Power: 2x 25W
 Frequency band: 214.82MHz standard (209.15MHz optional for second RF mic)
 Frequency response: 150Hz-16kHz (-3dB)
 Operating temperature: 0-40°C
 Inputs: 2x RF MIC - 1x MIC - 1x MP3 - 1x AUX
 Input sensitivity: MIC: 1.5mV / 10 KΩ - Phantom power - MP3: 150mV / 47 KΩ - AUX: 150mV / 47 KΩ
 Power supply: 230V~ 50/60Hz (17Vdc/6A battery inside)
 Input connectors: MIC: 1x XLR - MP3: 1x JACK 3.5mm - AUX: 1x RCA
 Dimensions: 300x1450x500mm
 Weight: 5.5Kg
 Notes: 1 VHF microphone included
 Autonomy: 4 hours



PA PROX2

Battery powered mobile amplified system
 Two horn loudspeakers on pole
 Two prof. handheld VHF wireless microphones
 Loudspeaker: 2 Horn speakers
 Power: 2x 25W
 Frequency band: 214.8MHz standard (209.15MHz optional for second RF mic)
 Frequency response: 150Hz-16kHz (-3dB)
 Operating temperature: 0 - 40°C
 Inputs: 2x RF MIC - 1x MIC - 1x MP3 - 1x AUX
 Input sensitivity: MIC: 1.5mV / 10KΩ - Phantom power - MP3: 150mV / 47KΩ - AUX: 150mV / 47KΩ
 Power supply: 230V~ 50/60Hz (17Vdc/6A battery inside)
 Input connectors: MIC: 1x XLR - MP3: 1x JACK 3.5mm - AUX: 1x RCA
 Dimensions: 300x1450x500mm
 Weight: 5.5Kg
 Notes: 2 VHF microphones included
 Autonomy: 4 hours



PA MEG25

ABS handheld / shoulder belt megaphone
 Power: 25W
 Power Supply: 8x C type batteries not supplied
 Autonomy: approx. 15 hours
 Dimensions: Ø230 - H350mm
 Weight: 1.65 kg





AMPLIFIERS

AMPLIFIERS



PA AMP03VR

Compact amplifier 30W, outputs 4/8/16 Ω - 100V
MP3 file recorder/player module
Two MIC inputs
One PHONO/AUX input switchable by selector
LED power indicator
Master volume control
Separate MIC1 and MIC2 microphone volume controls
AUX volume control
Low and high tone adjustment
Screw for earth connection
Four outputs, three of which at constant voltage (100V/70V/25V)
and one at constant impedance (4W)
MIC1 input priority function
Optional vehicle kit with amplifier fixing bracket and fused power
cable
Power supply: 230/117V~ 50-60Hz, 12Vdc
Weight: 4.5 Kg



PA AMP03

Compact amplifier 30W, outputs 4/8/16 Ω - 100V
Two MIC inputs with unbalanced 6.3 mm jack
One AUX input and one additional PHONO rear switchable input
LED power indicator
Master volume control
AUX/PHONO volume control
Separate MIC1 and MIC2 microphone volume controls
Low, medium and high tone controls
Terminal for earth connection
Four outputs, three of which at constant impedance (4/8/16 Ω) and
one at constant voltage (100W)
MIC1 input with priority function over the other inputs
Power supply: 230/117 V~ 50-60Hz
Weight: 4.5 Kg



PA AMP160XL

Professional mixer amplifier 160W - 70/100V- 4 Ω
Speaker short-circuit and overload protection circuit
LED power indicator
LED level indicator
Master volume control
Separate level controls for inputs 1÷5
Low and high tone adjustment
Lit knobs
4 MIC/MIC Phantom 24/LINE balanced inputs on Euroblock
terminal
3 AUX switchable inputs from front selector
1÷4 Inputs with VOX priority function / Contact on other inputs
(selectable by dip-switch)
MAIN - IN/OUT function
3 outputs, one of which at constant 4 Ω impedance and two at
constant voltage (70/100V)
Independent CHIME function for each input (routing)
REC OUT output on RCA
Balanced line level output on Euroblock terminal
230/117V~ 50/60Hz autoswitch power supply
Fins to fasten to a provided 1U 19" rack
Dimensions (WxHxD): 439x44x300 mm
483x44x300 mm - 1U 19" rack



PA AMP240V4

Four-zone mixer amplifier for 240W overall power.
Four output zones at 100V selectable independently through a
front keyboard
Constant impedance outputs (4W) and constant voltage outputs (25,
70, 100V)
Four MIC/LINE inputs with combo XLR/Jack 6.3mm
24V Phantom power supply on 4 MIC inputs
MIC1 input with vocal activation priority function - VOX
One PRE-OUT output
One AMP-IN input
One RCA input
One LINE OUT output
Output level indication LED range
Hold On and Monitor Outputs
LED peak signal indicator
Input LED signal presence indicator for telephone station call
Low and high tone adjustment Master output volume control
Volume control for each zone
Five independent controls for input signals (INPUT 1÷INPUT 5)
Screw for earth connection
Rear power supply selector 230/117 V~
Power supply: 230/117 V~ 50-60 Hz 24 Vdc
Fins to fasten to a provided 19" 2U rack
Dimensions (WxHxD): 420x 88x340mm
483x88x340mm - 19" 2U rack
Weight: 11.8 kg



PA AUP160D

Professional power unit 160W - 70/100V- 4Ω
 Speaker short-circuit and overload protection circuit
 LED power indicator
 LED level indicator
 Master volume control
 Low and high tone adjustment
 Lit knobs
 Balanced LINE input on Euroblock terminal
 Balanced LINE output on Euroblock terminal
 3 outputs, one of which at constant 4Ω impedance and two at constant voltage (70/100V)
 230/117V~ 50/60Hz autoswitch power supply
 Fins to fasten to a provided 1U 19" rack
 Dimensions (WxHxD): 439x44x300mm
 483x44x300mm - 1U 19" rack



PA AUP240R

Professional power unit, 240W, 8Ω and 50/70/100V outputs
 Inputs for one or more BM101 pre-amplified microphone bases with VOX priority function
 Additional priority contact command
 Connectors for Line signal input
 Input for telephone station call
 Low and High tone control
 Master control
 Constant impedance (8Ω) and constant voltage (50/70/100V) outputs
 Additional outputs 100V and 24Vdc present only with Paging function
 PA-HF filter inserted at the rear
 Ground-lift rear selector
 230/117Vca 50/60Hz power supply selector
 24Vdc emergency power supply
 Dimensions (WxHxD): 483x88x300mm - 19" 2U rack
 Weight: 13 kg



PA AUP4125S

4-channel power unit without transformers
 Power 4x125W. 4/8Ω 70/100V Outputs
 4 constant impedance outputs (4Ω)
 4 constant voltage outputs (70/100V) made electronically without the use of output transformers
 One balanced input for each channel
 One priority balanced input with independent level control for each channel
 Independent master control for each channel.
 Low and High tone control independent over the 4 channels
 Rear insertion independent PA-HF filter for each channel
 LED protection indicator
 LED signal presence indicator
 LED operating mode indicator (4 Ω/70V/100V)
 Switching power supply in SMPS technology (switch mode power supply)
 Fins to fasten to a provided 19" 2U rack
 Power Consumption: 1000VA
 Power supply: 230V~ / 117V~ 50-60Hz
 Dimensions (WxHxD): 434 x 88.5x425mm – 19" 2U rack
 Weight: 9.75 kg



PA AUP4250S

4-channel power unit without transformers.
 Power 4x250W. 4/8Ω 70/100V Outputs
 4 constant impedance outputs (4Ω)
 4 constant voltage outputs (70/100V) made electronically without the use of output transformers
 One balanced input for each channel
 One priority balanced input with independent level control for each channel
 Independent master control for each channel.
 Low and High tone control independent over the 4 channels
 Rear insertion independent PA-HF filter for each channel
 LED protection indicator
 LED signal presence indicator
 LED operating mode indicator (4 Ω/70V/100V)
 Switching power supply in SMPS technology (switch mode power supply) Fins to fasten to a 19" 2U rack
 Power Consumption: 2000VA
 Power supply: 230V~ / 117V~ 50-60 Hz
 Dimensions (WxHxD): 434x88.5x425mm – 19" 2U rack
 Weight: 10.35 kg

AMPLIFIERS



HPX900

2-Channel stereo amplifier
Output power (THD<1% 1kHz) 2Ω: 2x 450 W
Output power (THD<1% 1kHz) 4Ω: 2x 300 W
Output power (THD<1% 1kHz) 8Ω: 2x200W
BRIDGE output power 4Ω: 900W
Power supply 230/117Vac 50/60Hz
Dimensions (WxHxD): 483x89x335mm - 19" 2U rack
Weight: 6 kg



HPX1200

2-Channel stereo amplifier
Output power (THD<1% 1kHz) 2Ω: 2x 600 W
Output power (THD<1% 1kHz) 4Ω: 2x 450 W
Output power (THD<1% 1kHz) 8Ω: 2x300W
BRIDGE output power 4Ω: 1200W
Power supply 230/117Vac 50/60Hz
Dimensions (WxHxD): 483x89x335mm - 19" 2U rack
Weight: 6.9 kg



HPX2400

2-Channel stereo amplifier
Output power (THD<1% 1kHz) 2Ω: 2x 1200 W
Output power (THD<1% 1kHz) 4Ω: 2x 800 W
Output power (THD<1% 1kHz) 8Ω: 2x450W
BRIDGE output power 4Ω: 2400W
Power supply 230/117Vac 50/60Hz
Dimensions (WxHxD): 483x89x395mm - 19" 2U rack
Weight: 9.2 kg



HPX2800

2-Channel stereo amplifier
Output power (THD<1% 1kHz) 2Ω: 2x 1400 W
Output power (THD<1% 1kHz) 4Ω: 2x 1000 W
Output power (THD<1% 1kHz) 8Ω: 2x600W
BRIDGE output power 4Ω: 2800W
Power supply 230/117Vac 50/60Hz
Dimensions (WxHxD): 483x89x335mm - 19" 2U rack
Weight: 9.2 kg



HPX4600

2-Channel stereo amplifier
Output power (THD<1% 1kHz) 2Ω: 2x 2300 W
Output power (THD<1% 1kHz) 4Ω: 2x 1400 W
Output power (THD<1% 1kHz) 8Ω: 2x850W
BRIDGE output power 4Ω: 4600W
Power supply 230/117Vac 50/60Hz
Dimensions (WxHxD): 483x89x505mm - 19" 2U rack
Weight: 13 kg



HPX6000

2-Channel stereo amplifier
Output power (THD<1% 1kHz) 2Ω: 2x 3000 W
Output power (THD<1% 1kHz) 4Ω: 2x 2000 W
Output power (THD<1% 1kHz) 8Ω: 2x1200W
BRIDGE output power 4Ω: 6000W
Power supply 230/117Vac 50/60Hz
Dimensions (WxHxD): 483x89x335mm - 19" 2U rack
Weight: 13.6 kg



PRE-AMPLIFIERS, MIXER AND PROCESSORS

PRE-AMPLIFIERS AND PROCESSORS



PA AMIX54Z

Stereo Matrix/Mixer with 5 line/micro inputs with addressable multimedia module (Tuner FM - MP3 reader)
Five mic/line inputs on balanced COMBO and RCA Stereo
Independent gain control over input channels 1~5 by means of a rear trimmer
Phantom +48V that can be deselected for each input
LED CLIP indicator for each channel input
INPUT1 priority function over the other inputs that can be disabled
Dip-switch (INPUT1~5) to assign the input to the outputs
Independent volume controls (INPUT1~5)
Four balanced stereo zones/outputs on Euroblock terminals
Four signal presence indicators on the outputs
Stereo/Mono selector on each output
Independent volume controls for the four zone outputs
MP3 multimedia player with FM radio freely addressable on the output zones
Ground Lift
Power supply selector 230/117V~ 50/60Hz
Dimensions (WxHxD): 483x44.4x200mm - 19" 1U rack
Weight: 3.4 kg



PA AMIX63

Analogue mixer to mix microphone/line signals, 6 Micro XLR inputs, 3 RCA Line inputs
High-quality design and manufacturing accuracy
Six balanced COMBO mic/line inputs
Three unbalanced RCA stereo line inputs
Line/mic with phantom/mic input type selectors
LED input signal indicators for each channel
Adjustable MIC 1 priority function on the other inputs
Independent gain controls for channels 1~9
Two balanced XLR outputs (Left and Right)
Balanced mono output
RCA type stereo REC output (Left and Right)
LED output signal level indicators (Left and Right)
MASTER volume control
Tone controls
Emergency power terminals (24 V DC)
Power supply selector 230V~ 50/60Hz
(AMIX63V117 117V~ 50/60Hz)
Dimensions (WxHxD): 483x44x195mm 19" 1U rack
Weight: 2.9 kg

PA FSHIFTER

Antilarsen processor
Balanced line input on XLR connector
Unbalanced line input on RCA connector
Balanced line output on XLR connector
Unbalanced line output on RCA connector
LED indication of operating mode
Switch power supply 117/230V~ 50/60Hz
Dimensions (WxHxD): 483x44x195mm - 19" 1U Rack
Weight: 32 kg



M822USB

8-Channel MIXER 256 effects

Input connectors:

Mic Input: Balanced XLR-F

Line Input: Balanced JACK

Input sensitivity:

MONO INPUT CHANNEL - Mic Input: from 0 to -60dB

MONO INPUT CHANNEL - Line Input: from +20 to -40dB

STEREO INPUT CHANNEL - Mic Input: -0 / -40dB

STEREO INPUT CHANNEL - Line Input: +20 / -20dB

Input channel equalisation:

HIGH (shelving): ± 15 dB @ 12kHz

MID (peaking): ± 15 dB @ 2.5kHz

LOW (shelving): ± 15 dB @ 80Hz

Power supply: 110-240 VAC ($\pm 10\%$) 50 / 60 Hz

Dimensions (WxHxD): 315x91x363mm

Weight: 3.4 kg



M1622USB

16-Channel MIXER 256 effects

Input connectors:

Mic Input: Balanced XLR-F

Line Input: Balanced JACK

Input sensitivity:

MONO INPUT CHANNEL - Mic Input: from 0 to -60dB

MONO INPUT CHANNEL - Line Input: from +20 to -40dB

STEREO INPUT CHANNEL - Mic Input: -0 / -40dB

STEREO INPUT CHANNEL - Line Input: +20 / -20dB

Mono input channel equalisation:

HIGH (shelving): ± 15 dB @ 12kHz

MID (peaking): ± 15 dB from 100 Hz to 8 kHz

LOW (shelving): ± 15 dB @ 80Hz

Stereo input channel equalisation:

HIGH (shelving): ± 15 dB @ 12kHz

HI-MID (peaking): ± 15 dB @ 3kHz

LO-MID (peaking): ± 15 dB @ 500Hz

LOW (shelving): ± 15 dB @ 80Hz

Power supply: 110-240 VAC ($\pm 10\%$) 50 / 60 Hz

Dimensions (WxHxD): 465x91x462mm

Weight: 6.5 kg



PC260

2 inputs / 6 outputs DIGITAL SIGNAL PROCESSOR (DSP)

40 bit floating point resolution CORE DSP

AD/DA 24bit converter

110 dB dynamic range

5-band Parametric EQ for each input and output, including peaking, shelving, notch, resonating HP and LP, allpass and bandpass

28-band Graphic EQ for each input

3-band Dynamic EQ for each input

Programmable COMPRESSOR/LIMITER for each input-output

600ms delay for each input-output

Dedicated MIC input for RTA

Group function - SPL manager

AES digital input

PRONET compatible through USB port





AUDIO SOURCES AND RECEIVERS

AUDIO SOURCES AND RECEIVERS



PA SOURCE

CD-USB/MP3 Reader with AM/FM tuner
USB port for MP3 file reading on pen drive
TUNER OUT
Outputs levels: CD/MP3 OUT: 1.2V
TUNER OUT: 1.2V
Controls: CD/MP3 READER CONTROLS
RADIO TUNER CONTROLS
Frequency response:
 CD: 20Hz - 20kHz (-3dB)
 RADIO: 100Hz - 12kHz (-3dB)
Signal/Noise ratio: CD: > 75dB
RADIO: > 65dB
Power supply: 230V~ 50/60Hz (SOURCEUS 117V~ 50/60Hz)
Input/Output connectors: CD/MP3 OUT: 1x RCA L/R
TUNER OUT: 1x RCA L/R
Dimensions (WxHxD): 482x44x250mm - 19" 1U rack
Weight: 3.5 kg

PA ATMP160XL

Combo receiver 160W - 70/100V- 4Ω
USB/SD MMC, BLUETOOTH integrated multimedia module and
Digital AM/FM tuner
Speaker short-circuit and overload protection circuit
LED power indicator
LED level indicator
Master volume control
Separate level controls for inputs 1÷5
Low and high tone adjustment
Lit knobs
4 MIC/MIC Phantom 24/LINE balanced inputs on Euroblock terminal
3 AUX switchable inputs from front selector
1÷4 Inputs with VOX priority function / Contact on other inputs
(selectable by dip-switch)
MAIN - IN/OUT function
3 outputs, one of which at constant 4Ω impedance and two at
constant voltage (70/100V)
Independent CHIME function for each input (routing)
REC OUT output on RCA
Balanced line level output on Euroblock terminal
230/117V~ 50/60Hz autoswitch power supply
Fins to fasten to a provided 19" 2U rack
Dimensions (WxHxD): 439x88x300mm
483x88 x300mm - 19" 2U rack



SOUND SPEAKERS

SOUND SPEAKERS



PA PR10PL

ABS sound projector
Loudspeaker: Full range
Power: 10/5/2.5W @ 100V
Frequency response: 160Hz-16kHz (-10dB)
SPL (1W/m): 91dB
SPL MAX (Pmax @ 1m): 101dB
Coverage angle 1kHz/4kHz (-6dB): 130°/85°
Colour: White (RAL 9010)
Dimensions: Ø138-H190mm
Weight: 1.9 kg
U-type bracket included
Protection rating: IP55



PA PR10PLB

ABS sound projector
Loudspeaker: Full range
Power: 10/5/2.5W @ 100V
Frequency response: 160Hz-16kHz (-10dB)
SPL (1W/m): 91dB
SPL MAX (Pmax @ 1m): 101dB
Coverage angle 1kHz/4kHz (-6dB): 130°/85°
Colour: Black
Dimensions: Ø138-H190mm
Weight: 1.9 kg
U-type bracket included
Protection rating: IP55



PA PR30PL

ABS waterproof sound projector
Loudspeaker: 5" Full range
Power: 30/15/7.5/3.5/1.5W @ 100V 8Ω
Frequency response: 125Hz-15kHz
SPL (1W/m): 101dB
SPL MAX (Pmax @ 1m): 110 dB
Coverage angle 1kHz/4kHz (-6dB): 130°/90°
Colour: White
Dimensions: Ø178-H200mm
Weight: 2.1 kg
U-type bracket included
Protection rating: IP56



PA HSPL30

Music-type ABS waterproof wide-band Hi-Fi horn
Loudspeaker: Full range
Power: 30/15W @ 100V
Frequency response: 120Hz-15kHz (-10dB)
SPL (1W/m): 98dB
SPL MAX (Pmax @ 1m): 113dB
Coverage angle 1kHz/4kHz (-6dB):
H: 110°/80°
V: 90°/80°
Dimensions (WxHxD): 366x172x272mm
U type bracket included
Protection rating: IP56



PA HSPL40

ABS waterproof 2-way Hi-Fi horn
 Loudspeaker: W: 6.5" - T: 1"
 Power: 40/20/10/5W @ 100V
 Frequency response: 120Hz-15kHz (-10dB)
 SPL (1W/m): 98 dB
 SPL MAX (Pmax @ 1m): 114 dB
 Coverage angle 1kHz/4kHz (-6dB):
 H: 110°/80°
 V: 90°/80°
 White (RAL 9010)
 Dimensions (WxHxD): 370x255x291mm
 Weight: 5.6 kg
 U-type bracket included
 Protection rating: IP55



PA WS04

ABS wall speaker
 Loudspeaker: 6" Full range
 Power: 10/5W @ 100V
 Frequency response: 110Hz-13kHz (-10dB)
 SPL (1W/m): 91dB
 SPL MAX (Pmax @ 1m): 101dB
 Coverage angle 1kHz/4kHz (-6dB): 110°/85°
 Colour: White (RAL 9010)
 Dimensions (WxHxD): 240x345x101mm
 Weight: 1.6 kg
 Fixing system by screw



XE65CTX

2-way square wall/ceiling mount speaker in ABS
 Loudspeaker: W: 6.5" - T: 1"
 Power: 40/20/5/2W @ 100V/70V
 45W @ 8Ω
 Frequency response: 70Hz-20kHz (-10dB)
 SPL (1W/m): 87dB
 SPL MAX (Pmax @ 1m): 103dB
 Coverage angle 1kHz/4kHz (-6dB): 145°/80°
 Colour: White (RAL 9010)
 Dimensions (WxHxD): 200x200x77mm
 Weight: 1.7 kg
 Assembly: Ceiling/wall recessed
 Mounting hole (WxH): 176x176mm
 Available in pairs (single price)



PA COVER6X

Metal box for XE65CTX

SOUND SPEAKERS



XE51CT

ABS ceiling recessed speaker
Loudspeaker: 5" Full range
Power: 10/5/2.5W @ 100V
Frequency response: 100Hz-20kHz (-10dB)
SPL (1W/m): 90dB
SPL MAX (Pmax @ 1m): 100 dB
Coverage angle 1kHz/4kHz (-6dB): 130°/100°
Colour: White (RAL 9010)
Dimensions (WxHxD): Ø191.5-H78mm
Weight: 1 kg
Assembly: ceiling recessed
Mounting hole: Ø165mm
Available in pairs (single price)



PA COVERCS

Metal box for XE51CT



PA CSE06T

Metal ceiling speaker
Loudspeaker: 5" Full range
Power: 6/3W @ 100V
Frequency response: 110Hz-15kHz (-10dB)
SPL (1W/m): 90dB
SPL MAX (Pmax @ 1m): 98dB
Coverage angle 1kHz/4kHz (-6dB): 150°/95°
Colour: White (RAL 9010)
Dimensions: Ø204-H85mm
Weight: 0.7 kg
Assembly: ceiling recessed
Mounting hole: Ø175mm



XE65CT

ABS 2-way hi-fi ceiling recessed speaker
Loudspeaker: W: 6.5" - T: 1"
Power: 20/10/5/2.5W @ 100V
Frequency response: 70Hz-20kHz (-10dB)
SPL (1W/m): 87dB
SPL MAX (Pmax @ 1m): 100 dB
Coverage angle 1kHz/4kHz (-6dB): 130°/80°
Colour: White (RAL 9010)
Dimensions: Ø204-H85mm
Weight: 1.2 kg
Assembly: ceiling recessed
Mounting hole: Ø179mm
Available in pairs (single price)



PA CS6TALEN

Steel recessed speaker with anti flame steel cover, ceramic terminal board and thermal fuse
 Loudspeaker: 6.5" Full range
 Power: 12/6/3W @ 100V
 Frequency response: 100Hz-20kHz (-10dB)
 SPL (1W/m): 90dB
 SPL MAX (Pmax @ 1m): 100 dB
 Coverage angle 1kHz/4kHz (-6dB): 150°/95°
 Colour: White (RAL 9010)
 Dimensions: Ø220-H150mm
 Weight: 1.6 kg
 Assembly: Ceiling recessed
 Mounting hole: Ø205mm



X50CTV2

ABS two-way hi-fi ceiling recessed speaker XENIA Series
 Loudspeaker: W: 5" - T: ½"
 Power: 10/5/2/1 W @ 100V
 Frequency response: 70Hz-20kHz (-10dB)
 SPL (1W/m): 91dB
 SPL MAX (Pmax @ 1m): 103dB
 Coverage angle 1kHz/4kHz (-6dB): 150°/95°
 Colour: White (RAL 9010)
 Dimensions: Ø190-H80mm
 Weight: 1.2 kg
 Ceiling recessed
 Mounting hole: Ø170mm
 Available in pairs (single price)
 Protection rating: IP44



PA CS20SL

ABS two-way hi-fi ceiling recessed speaker and magnetic metal grid.
 Loudspeaker: W: 4" - T: ½"
 Power: 20/10/5W @ 100V
 Frequency response: 100Hz-20kHz (-10dB)
 SPL (1W/m): 88dB
 SPL MAX (Pmax @ 1m): 102dB
 Coverage angle 1kHz/4kHz (-6dB): 130°/120°
 Colour: White (RAL 9010)
 Dimensions: Ø187-H80mm
 Weight: 1.2kg
 Recess Hole: Ø160mm



PA CS30SL

ABS two-way hi-fi ceiling recessed speaker and magnetic metal grid.
 Loudspeaker: W: 6" - T: ½"
 Power: 30/15/7.5W @ 100V
 Frequency response: 90Hz-20kHz (-10dB)
 SPL (1W/m): 88dB
 SPL MAX (Pmax @ 1m): 105dB
 Coverage angle 1kHz/4kHz (-6dB): 130°/120°
 Colour: White (RAL 9010)
 Dimensions: Ø235-H90mm
 Weight: 1.8 kg
 Recess Hole: Ø200mm

SOUND SPEAKERS



PA CS30HFT

ABS recessed Hi-Fi speaker with steel cap
Loudspeaker: W: 6.5" - T: 0.75"
Power: 60/30/15W @ 100V
Frequency response: 100Hz - 20kHz (-10dB)
SPL (1W/m): 88dB
SPL MAX (Pmax @ 1m): 106dB
Coverage angle 1kHz/4kHz (-6dB): 160°/90°
Material: ABS/Metal
Colour: White (RAL 9010)
Dimensions: Ø252-H210mm
Weight: 3.4 kg
Assembly: ceiling recessed
Mounting hole: Ø223mm



PA CSB10

ABS Ceiling speaker
Loudspeaker: 5" Full range
Power: 10/5/2.5W @ 100V-70V
Frequency response: 110Hz - 15kHz (-10 dB)
SPL (1W/m): 92dB
SPL MAX (Pmax @ 1m): 102dB
Coverage angle 1kHz/4kHz (-6dB): 160°/95°
Colour: White (RAL 9010)
Dimensions (WxHxD): Ø184-H162.5mm
Weight: 1.7 kg
4.5 metre suspension cable
Protection rating: IP44



PA CO30S5

Aluminium high directivity column speaker
Loudspeaker: 5x3" ¼
Power: 7.5/15/30 W - 100V
Frequency response: 200Hz-19kHz (-10dB)
SPL (1W/m): 93dB
SPL MAX (Pmax @ 1m): 108dB
Coverage angle 1kHz/4kHz (-6dB): V:70°/20° H:160°/120°
Colour: White
Dimensions (WxHxD): 91x544x88mm
Weight: 3.5 kg



PA CO60S10

Aluminium high directivity column speaker
Loudspeaker: 10x3" ¼
Power: 15/30/60 W @ 100V
Frequency response: 180Hz-18kHz (-10dB)
SPL (1W/m): 93dB
SPL MAX (Pmax @ 1m): 111dB
Coverage angle 1kHz/4kHz (-6dB): V:40°/20° H:160°/120°
Colour: White
Dimensions (WxHxD): 91x94 x88mm
Weight: 6.2 kg



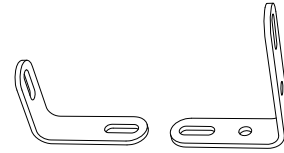
PA CO120S15

Aluminium high directivity column speaker
Loudspeaker: 10x3" ¼
Power: 60/120W
@ 100V Frequency response 170Hz-17kHz (-10dB)
SPL (1W/m): 94dB
SPL MAX (Pmax @ 1m): 115dB
Coverage angle 1kHz/4kHz (-6dB): V:30°/20° H:160°/120°
Colour: White
Dimensions (WxHxD): 91x1339x88mm
Weight: 8.9 kg



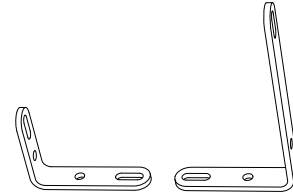
PA CO4006

Aluminium high directivity column speaker
Loudspeaker: W: 6x2" - T: 1"
Power: 40/20/10W @ 100V
Frequency response: 180Hz-18kHz (-10dB)
SPL (1W/m): 91dB
SPL MAX (Pmax @ 1m): 107 dB
Coverage angle 1kHz/4kHz (-6dB): V:40°/30° H:170°/140°
Colour: White
Swivel bracket
Dimensions (WxHxD): 67x505x65mm
Weight: 2.2 kg



PA SC1

Wall bracket for CO series column speakers



PA SC2

Wall bracket for CO series column speakers



PA CO4012

Aluminium high directivity column speaker
Loudspeaker: W:12x2" - T: 1"
Power: 40/20/10W @ 100V
Frequency response: 180Hz-18kHz (-10dB)
SPL (1W/m): 93dB
SPL MAX (Pmax @ 1m): 109 dB
Coverage angle 1kHz/4kHz (-6dB): V:30°/25° H:170°/150°
Colour: White
Swivel bracket
Dimensions (WxHxD): 67x828x65mm
Weight: 3.5 kg

SOUND SPEAKERS



PA HS15AL

Aluminium horn speaker
Power: 15/10/5/3/1W @ 100V
Frequency response: 280Hz-12.5kHz (-10dB)
SPL (1W/m): 108dB
SPL MAX (Pmax @ 1m): 120dB
Coverage angle 1kHz/4kHz (-6dB): 90°/60°
Colour: Grey
Dimensions: Ø212.5x229.5mm
Weight: 1.4 kg
U-type bracket included
Protection rating: IP55



PA HS30AL

Aluminium horn speaker
Power: 30/15/10/5/3/1W @ 100V
Frequency response: 250Hz-16kHz (-10dB)
SPL (1W/m): 109dB
SPL MAX (Pmax @ 1m): 124dB
Coverage angle 1kHz/4kHz (-6dB): 90°/60°
Colour: Grey
Dimensions: Ø259x261mm
Weight: 1.8 kg
U-type bracket included
Protection rating: IP55



PA H16R

Long range aluminium round horn, without driver Anti UV treatment
To be used combined with HD60T driver
Coverage angle 1kHz/4kHz (-6dB): 80°/65°
Aluminium body
Colour: Grey
Dimensions: Ø407x325mm
Weight: 1.5 kg
U-type bracket included
Protection rating: IP66



PA HD60T

Waterproof driver unit for "H" series horns
Power: 60/40/20W @ 100V
Frequency response: 200Hz-6kHz (-10dB)
SPL (1W/m): 115dB
SPL MAX (Pmax @ 1m): 133dB
Colour: Grey
Weight: 1.4 kg
Protection rating: IP55



PA HS30

ABS horn speaker
Power: 30/15/10/5/3/1W @ 100V
Frequency response: 250Hz-16kHz (-10dB)
SPL (1W/m): 109dB
SPL MAX (Pmax @ 1m): 124dB
Coverage angle 1kHz/4kHz (-6dB): 95°/65°
Colour: White (RAL 9010)
Dimensions (WxHxD): 287x208x257.5mm
Weight: 1.7 kg
U-type bracket included
Protection rating: IP55



PA STONE

Stone-shape speaker
Loudspeaker: Two-way coaxial W:6.5" - T:1.5"
Power: 15/7.5W @ 100V - 7.5/3.8W @ 70V
Frequency response: 120Hz -15kHz (-10dB)
SPL (1W/m): 95dB
SPL MAX (Pmax @ 1m): 108dB
Coverage angle 1kHz/4kHz (-6dB): 250°/250°
ABS body
Colour: Light grey stone
Dimensions (WxHxD): 259x265x349mm
Weight: 4.3 kg
Protection rating: IP 55



PA FGS20

Hi-Fi garden speaker
Loudspeaker: Two-way coaxial
Power: 30/15/7.5W @ 100V
Frequency response: 80Hz-12kHz (-10dB)
SPL (1W/m): 97dB
SPL MAX (Pmax @ 1m): 110dB
Coverage angle 1kHz/4kHz (-6dB): 360°/360°
ABS body
Colour: Green
Dimensions (WxHxD): 280x400x280mm
Weight: 1.8 kg
Protection rating: IP55

SOUND SPEAKERS



XE35TB

Two-way monitor speaker

Loudspeaker: W: 3.5" T: 1"

Power: 15/7.5/4/2/1W @ 100/70V
30W @ 8Ω

Frequency response: 70Hz-20kHz (-10dB)

SPL (1W/m): 85 dB

SPL MAX (Pmax @ 1m): 97 dB

Coverage angle 1kHz/4kHz (-6dB): 150°/100°

ABS body

Colour: Black

Dimensions (WxHxD): 130x198x130mm

Weight: 1.8 kg

U-type bracket included

Available in pairs (single price)



XE55TB

Two-way monitor speaker

Loudspeaker: W: 5" - T: 1"

Power: 30/10/5/2/1W @ 100/70V
60W @ 8Ω

Frequency response: 70Hz-20kHz (-10dB)

SPL (1W/m): 87dB

SPL MAX (Pmax @ 1m): 101dB

Coverage angle 1kHz/4kHz (-6dB): 140°/90°

ABS body

Colour: Black

Dimensions (WxHxD): 181x240x172mm

Weight: 3 kg

U-type bracket included

Available in pairs (single price)



XE65TB

Two-way monitor speaker

Loudspeaker: W: 6.5" - T: 1"

Power: 40/20/10/5/2W @ 100/70V
60W @ 8Ω

Frequency response: 70Hz-20kHz (-10dB)

SPL (1W/m): 87dB

SPL MAX (Pmax @ 1m): 103dB

Coverage angle 1kHz/4kHz (-6dB): 140°/90°

ABS body

Colour: Black

Dimensions (WxHxD): 217x288x204mm

Weight: 4.2 kg

U-type bracket included

Available in pairs (single price)



PA SNBK

Adjustable wall swivel connection for Monitor line.

Colour Black. Standard package: 2pcs



XE35TW

Two-way monitor speaker

Loudspeaker: W: 3.5" - T: 1"

Power: 15/7.5/4/2/1W @ 100/70V
30W @ 8Ω

Frequency response: 70Hz-20kHz (-10dB)

SPL (1W/m): 85dB

SPL MAX (Pmax @ 1m): 97 dB

Coverage angle 1kHz/4kHz (-6dB): 150°/100°

ABS body

Colour: White

Dimensions (WxHxD): 130x198x130mm

Weight: 1.8 kg

U-type bracket included

Available in pairs (single price)



XE55TW

Two-way monitor speaker

Loudspeaker: W: 5" - T: 1"

Power: 30/10/5/2/1W @ 100/70V
60W @ 8Ω

Frequency response: 70Hz-20kHz (-10dB)

SPL (1W/m): 87dB

SPL MAX (Pmax @ 1m): 101dB

Coverage angle 1kHz/4kHz (-6dB): 140°/90°

ABS body

Colour: White

Dimensions (WxHxD): 181x240x172mm

Weight: 3 kg

U-type bracket included

Available in pairs (single price)



XE65TW

Two-way monitor speaker

Loudspeaker: W: 6.5" - T: 1"

Power: 40/20/10/5/2W @ 100/70V
60W @ 8Ω

Frequency response: 70Hz-20kHz (-10dB)

SPL (1W/m): 87dB

SPL MAX (Pmax @ 1m): 103dB

Coverage angle 1kHz/4kHz (-6dB): 140°/90°

ABS body

Colour: White

Dimensions (WxHxD): 217x288x204mm

Weight: 4.2 kg

U-type bracket included

Available in pairs (single price)



PA SNWH

Adjustable wall swivel connection for Monitor line.

Colour White. Standard package: 2pcs

SOUND SPEAKERS



X30TB

Two-way XENIA series speaker
Loudspeaker W: 3" - T: 1" (neodymium soft dome horn loaded tweeter)
Power: 30/15/8W @ 100/70V
30W @ 8Ω
Frequency response: 100-20kHz (-10dB)
SPL (1W/m @ 1 kHz): 87dB
SPL MAX (Pmax @ 1m):-
Coverage angle 1kHz/4kHz (-6dB): 150°/100°
ABS body
Colour: Black
Dimensions (WxHxD): 125x193x120mm
Weight: 1.3 kg
Adjustable bracket included
Protection rating: IP55
Available in pairs (single price)



X50TB

Two-way (1") tweeter XENIA series speaker
Loudspeaker W: 5" - T: 1" (neodymium soft dome horn loaded tweeter)
Power: 50/25/12W @ 100/70V
50W @ 8Ω
Frequency response: 100-20kHz (-10dB)
SPL (1W/m @ 1 kHz): 90dB
SPL MAX (Pmax @ 1m):-
Coverage angle 1kHz/4kHz (-6dB): 140°/90°
ABS body
Colour: Black
Dimensions (WxHxD): 170x280x175mm
Weight: 2.3 kg
Adjustable bracket included
Protection rating: IP55
Available in pairs (single price)



X30TW

Two-way XENIA series speaker
Loudspeaker W: 3" - T: 1" (neodymium soft dome horn loaded tweeter)
Power: 30/15/8W @100/70V
30W @ 8Ω
Frequency response: 100-20kHz (-10dB)
SPL (1W/m @ 1 kHz): 87dB
SPL MAX (Pmax @ 1m)
Coverage angle 1kHz/4kHz (-6dB): 150°/100°
ABS body
Colour: Black
Dimensions (WxHxD): 125x193x120mm
Weight: 1.3 kg
Adjustable bracket included
Protection rating: IP55
Available in pairs (single price)



X50TW

Two-way (1") tweeter XENIA series speaker
Loudspeaker W: 5" - T: 1" (neodymium soft dome horn loaded tweeter)
Power: 50/25/12W @100/70V
50W @ 8Ω
Frequency response: 100-20kHz (-10dB)
SPL (1W/m @ 1kHz): 90dB
SPL MAX (Pmax @ 1m)
Coverage angle 1kHz/4kHz (-6dB): 140°/90°
ABS body
Colour: White
Dimensions (WxHxD): 170x28 x175mm
Weight: 2.3 kg
Adjustable bracket included
Protection rating: IP55
Available in pairs (single price)



PROFESSIONAL SOUND SPEAKERS

PROFESSIONAL SOUND SPEAKERS



FLASH5PV2

Passive 5" FLASH series speaker 16 Ω
2-way system with soft dome tweeter and 5" woofer
Coverage angle: 90°H x 60°V
Impedance: 16 Ω
Power Rating (continuous): 80W
Power Rating (peak): 160W
Frequency response: 80Hz-20kHz
SPL (1W/m): 91dB
Weight: 2.5kg
Flying System: 3 x M6 - top/bottom
Material: Polypropylene body
Colour: Black
Dimensions (WxHxD): 175x265x176.5mm



FLASH5PWV2

Passive 5" FLASH series speaker 16 Ω
2-way system with soft dome tweeter and 5" woofer
Coverage angle: 90°H x 60°V
Impedance: 16 Ω
Power Rating (continuous): 80W
Power Rating (peak): 160W
Frequency response: 80Hz-20kHz
SPL (1W/m): 91dB
Weight: 2.5kg
Flying System: 3 x M6 - top/bottom
Material: Polypropylene body
Colour: White
Dimensions (WxHxD): 175x265x176.5mm



FLASH8XP

Passive 8" FLASH series speaker 8 Ω
2-way system with 1.5" driver and 8" woofer
Coverage angle: 90°H x 60°V
Impedance: 8 Ω
Power Rating (continuous): 150W
Power Rating (peak): 300W
Frequency response: 70Hz-20kHz
SPL (1W/m): 96dB
Weight: 8.5 kg
Material: Polypropylene body
Colour: Black
Assembly: optional bracket or stand
Dimensions (WxHxD): 270x422x260mm



FLASH12XP

Passive 8" FLASH series speaker 8 Ω
2-way system with 2.5" driver and 12" woofer
Coverage angle: 90°H x 60°V
Impedance: 8 Ω
Power Rating (continuous): 300W
Power Rating (program): 600W
Frequency response: 70Hz-20kHz
SPL (1W/m): 99dB
Weight: 18.5 kg
Material: Polypropylene body
Colour: Black
Assembly: optional bracket or stand
Dimensions (WxHxD): 390x623x350mm



SPSK105BKF5

Black anodised aluminium support. To be used with FLASH5, FREE1, CO30S5 and CO60S10



KP210

Steel adjustable case-subwoofer spacer support with Ø35mm terminals



FRE300BK

Professional aluminium speaker stand



AC169

Black galvanised M10 eyebolt



KPTNX03

Adjustable metal bracket for wall mounting, 50cm long bar, 4 steps at 12.5° in vertical and 7 steps at 10° in horizontal, must be used with KPTFL accessory.



KPTNX04

Adjustable metal bracket for wall mounting, 25cm long bar, 4 steps at 12.5° in vertical and 7 steps at 10° in horizontal, must be used with KPTFL accessory. Universal wall bracket for FLASH5 - FLASH8 - FLASH12 - FLASH15

PROFESSIONAL SOUND SPEAKERS



KP560

Sturdy tubular steel wall support for loudspeakers. The directional mounting bracket allows both horizontal and vertical adjustment.

Height: 250mm

Depth: 390mm

Weight: 2.2 kg

Loading capacity: 35 kg

Colour: Black



KP565

Sturdy tubular steel wall support for loudspeakers. The directional mounting bracket allows both horizontal and vertical adjustment.

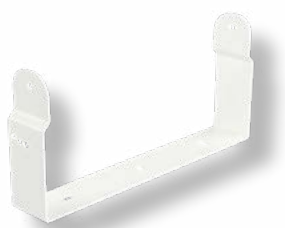
Height: 250mm

Depth: 280mm

Weight: 2.1 kg

Loading capacity: 35 kg

Colour: Black



KPTFL5W

White FLASH5 wall bracket



KPTFL5

Black FLASH5 wall bracket



KPTFL12

FLASH12 wall bracket



KPTFL8

FLASH8 wall bracket



SW110AV2

SubWoofer Active 10" - 250W
 System type Bandpass enclosure subwoofer
 Loudspeaker: Woofer 10" con 2x2.5"VC
 Continuous power: 250W
 Frequency response: 46Hz-160Hz
 SPL (1W/m): 116dB
 Connectors:
 IN: 2 x NEUTRIK COMBO
 OUT: 2 x NEUTRIK XLR-M
 LINK: 2 x NEUTRIK XLR-M
 Controls: Volume, GND lift, X-over Frequency, Phase Power supply:
 230 V~ or 120 V~ 50/60 Hz
 Weight: 14kg
 Cabinet: 15/18mm multilayer
 Black anti-scratch paint
 1 x handle
 1 x pole support
 Dimensions (WxHxD): 520x330x350mm



SW110PV2

SubWoofer Passivo 10" 150+150W
 Altoparlante: Woofer 10"
 Impedenza: 8+8Ω
 Power Handling (continuous): 150+150W
 Power Handling (peak): 300+300W
 Risposta in frequenza: 46Hz-160Hz
 SPL (1W/m): 90dB @ 1 W/1m
 Peso: 29kg
 Cabinet: multistrato 15/18mm
 Dimensioni (LxHxP): 520x330x350mm



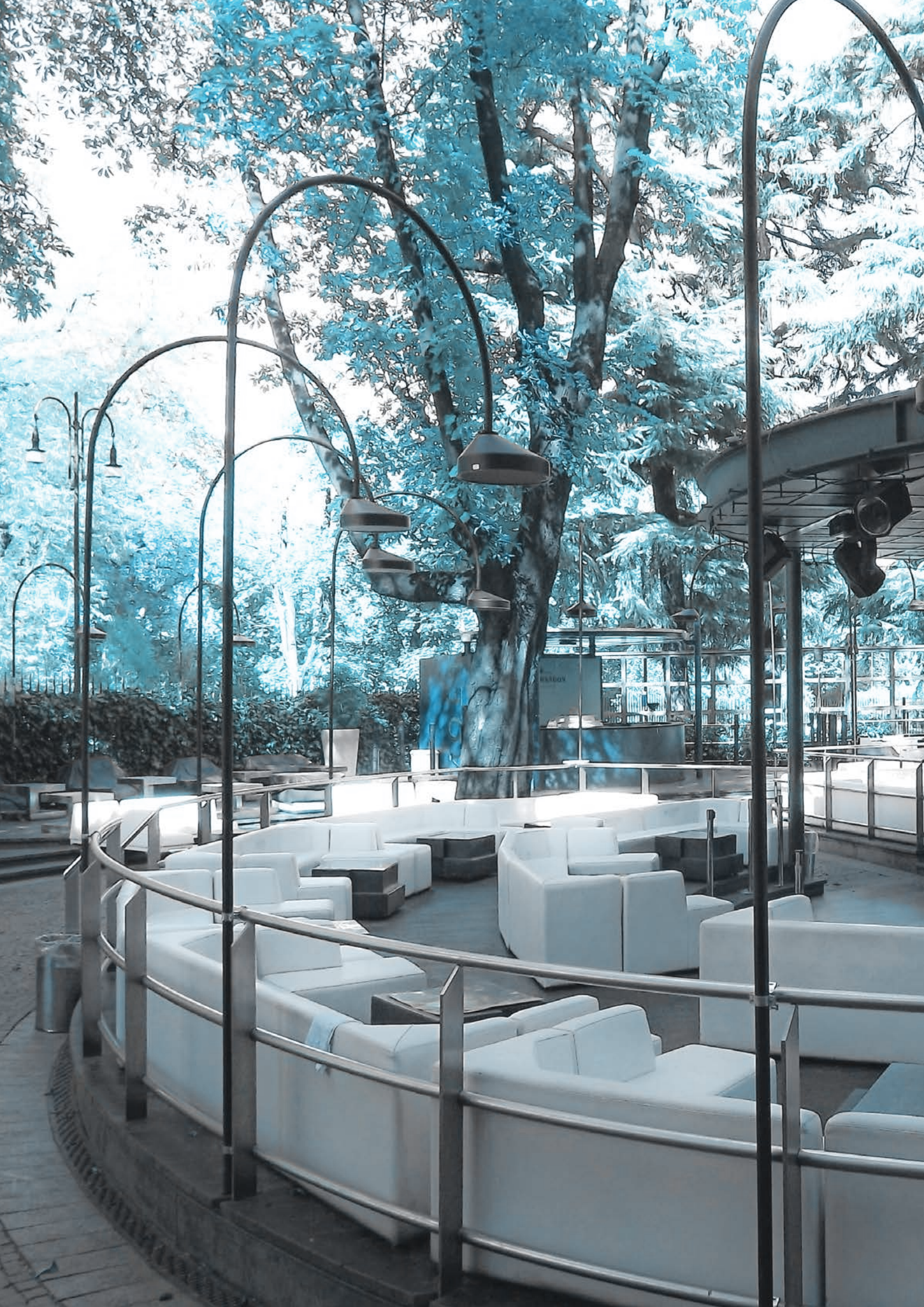
SW115AV2

Active SubWoofer: 15" - 350W
 System type: BPS enclosure subwoofer
 Loudspeaker: 15" woofer with 3"VC
 Amplifier Continuous Power 350 W
 Frequency Response: 40 Hz - 160 Hz
 Max SPL: 126 dB
 Connectors: IN: 2 x NEUTRIK COMBO
 OUT/LINK: 2 x JACK 1/4", 2 x XLR-M
 Controls: Volume, Stereo/Mono, Flat Out
 GND lift, X-over frequency, Phase
 Power Supply: 230 VAC or 120 VAC 50/60 Hz
 Weight: 27.5 kg
 Cabinet: 15/18 mm plywood
 Black anti-scratch paint
 1.5 mm metal grille
 2 x steel handles
 1 x pole holder
 4 x 75 mm wheels
 Dimensions: (W x H x D): 430 x 550 x 600mm



SW118P

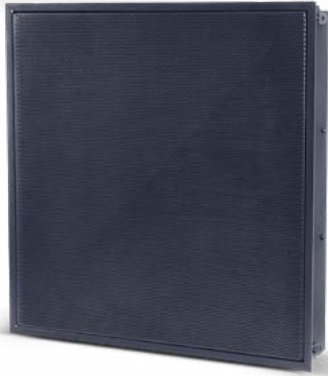
SubWoofer Passivo 18"500W
 Loudspeaker: Woofer 15"
 Impedance: 8Ω
 Power Handling (continuous): 500W
 Power Handling (peak): 1000W
 Frequency response: 36Hz-170Hz (without filter)
 SPL (1W/m): 98dB
 Weight: 47kg
 Cabinet: 15/18mm multilayer
 Dimensions (WxHxD): 520x660x640mm





LNE SYSTEMS

LNE SYSTEMS



SC965P

LNE SYSTEM Low Noise Emission
System: full-range ceiling loudspeaker matrix element
Frequency response: 80Hz-16kHz
SPL MAX (Pmax @ 1m): 120dB
Components: 9x 6.5" full range
Impedance: 36Ω
SPL (1W/m): 88.3dB
Power handling (AES): 400W
Power handling (programme): 800W
H and V Coverage variable by number of elements used
Weight: 16 kg
Dimensions (WxHxD): 600x600x160mm



DS112P

LNE SYSTEM Low Noise Emission
Two-way high directivity System MTM circular configuration
Input power rating (continuous): 300W (8Ω)
Input power rating (peak): 600W (8Ω)
Impedance: 8Ω
Frequency response: 110Hz-16kHz (-3dB), 80Hz-18kHz (-10dB)
SPL MAX (Pmax @ 1m): 124dB
Low frequencies: 12 x 3.5"
High frequencies: 1 x 1" compression driver
Coverage angle: <78°
Colour: Standard RAL 9007
Colour Custom: (RAL CODE) Minimum 20 pcs
Weight: 9 kg
Dimensions: Ø510-H208mm
Protection rating: IP55



DS112PT

LNE SYSTEM Low Noise Emission
Two-way high directivity System MTM circular configuration
Input power rating (continuous): 300W (8Ω)
Input power rating (peak): 600W (8Ω)
Power Taps to 100V: 25/50/100W
Impedance: 8Ω
Frequency response: 110Hz-16kHz (-3dB), 80Hz-18kHz (-10dB)
SPL MAX (Pmax @ 1m): 124dB
Low frequencies: 12 x 3.5"
High frequencies: 1 x 1" compression driver
Coverage angle: <78°
Colour: Standard RAL 9007
Colour Custom: (RAL CODE) Minimum 20 pcs
Weight: 9 kg
Dimensions: Ø510-H208mm
Protection rating: IP55



DS110SP

LNE SYSTEM Low Noise Emission
Subwoofer
Input power rating (continuous): 400W (8Ω)
Input power rating (peak): 800W (8Ω)
Impedance: 4Ω
Frequency response: 30Hz-250Hz
SPL MAX (Pmax @ 1m): 127dB
Low Frequency Device: 10" woofer
Colore : Standard RAL 9007
Colour Custom: (RAL CODE) Minimum 20 pcs
Dimensions: Ø510-H208mm
Protection rating: IP55



MICROPHONES

MICROPHONES



PA BM101

General announcement active call station with automatic compressor, dynamic microphone, programmable talk button (PTT or ON/OFF), level output adjustment trimmer, chime level trimmer, selectable 2 or 3 tone chime and smart priority management. Power supply from RJ45 cable or 24Vdc local adaptor.



PA BM102

General announcement call station with dynamic microphone, Push to talk button and priority output contact (Normally Open).



PA BMG2

Table microphone base, with gooseneck microphone with light ring
Sensitivity: $-40\text{dB} \pm 2\text{dB} / 100\Omega \pm 30\%$
Frequency response: 40Hz-20kHz (-3dB)
Power supply: Phantom 48Vdc Batteries 3V (2x AA)
Gooseneck length: 445 mm
Switch: ON-OFF
Connector: XLR
Dimensions (WxHxD): 115x140x30mm
Weight: 0.7 kg



PA MG400

One-way electret gooseneck microphone
Sensitivity: 7mV/Pa
Impedance: 200Ω balanced
Frequency response: 150Hz-18kHz (-3dB)
Phantom power supply: 12-52Vdc
Gooseneck length: 400mm
Connector: XLR
Dimensions: H400mm



PA MG500

One-way, electret gooseneck microphone
Sensitivity: 7mV/Pa
Impedance: 200Ω balanced
Frequency response: 150Hz-18kHz (-3dB)
Phantom power supply: 12-52Vdc
Gooseneck length: 500mm
Connector: XLR
Dimensions: H500mm



PA BM103T

Microphone base for gooseneck MG300/400/500,
connectors XLR-3P. BISTABLE ON/OFF KEY



PA BMS4

Metal base, table mounting by screws, XLR connector

MICROPHONES



DM580LC

Hand-held dynamic microphone
Dynamic capsule
Cardioid type polar response
Suitable for vocal applications
Metal heavy duty construction
ON/OFF switch for on-stage control
Metal grid with foam internal filter for reducing wind noise
5 metre XLR cable included
Frequency response (+/- 3dB): 70Hz - 14kHz
Sensitivity 1 kHz: -55dB +/-3dB
Impedance: 600Ω
Weight: 0.275Kg
Dimensions: Ø50-L195mm



OST110BK

Heavy cast iron triangular table base with telescopic rod
Base dimensions: Ø300mm
Minimum height: 950mm
Maximum height: 1650mm
Weight: 5.1 kg
Colour: Matte black



PA MIC62W

Boundary condenser microphone
table or wall low profile
Condenser capsule
One-way
Frequency response: 60Hz-16kHz
Sensitivity: -36±3dB @ 1kHz
Impedance: 200Ω±30% - @1kHz
Voltage: 9V~52Vdc
Cable length: 4.56m
Weight: 0.250Kg (without cable)
Dimensions (WxHxD): 75x20x100mm
Colour: White



RSM200BK

Telescopic giraffe rod for microphones
Base dimensions: Ø700mm
Minimum height: 950mm
Maximum height: 1600mm
Weight: 2.7 kg
Colour: Matte black
Telescopic giraffe: 565/860mm



DST110BK

Heavy duty cast-iron triangular table base with telescopic rod
Base dimensions: 160x180mm
Minimum height: 400mm
Maximum height: 560mm
Weight: 3.06 kg
Rod length: 330/490mm
Colour: Matte black base with black tube



APM50BK

Metal gooseneck with 3/8" - 5/8" male/female thread
Dimensions: Ø15-L300mm



APM20

Special ABS stand for microphone (ØMin-Max: 22-26mm)



APM30

ABS microphone clip holder (Ø Min-Max: 20-32mm)



DST100

Heavy duty cast-iron triangular table base
Base dimensions: 180x185mm
Height: 45mm
Weight: 2.5 kg colour: Matte black



APM60BK

Metal gooseneck with 3/8" - 5/8" male/female thread
Dimensions: Ø15-L500mm



APM40

5/8"-3/8" universal adapter for microphone stands



APM35B

Large ABS stand for microphone (ØMin-Max: 30-35mm)

MICROPHONES



WM202M

Handheld fixed frequency wireless microphone system UHF Band: 863 - 865 Mhz
Maximum operating distance: up to 30 metres
Frequency response: 50Hz-15kHz
Noise signal ratio: -105dB
Capsule: Cardioid dynamic capsule
Low-profile desktop receiver with two foldable antennas
Up to 3 systems usable in the same location on different frequencies, the simultaneous use depends on the possible interferences caused by other transmitters
ABS carrying and storage case



WM202H

Headset fixed frequency wireless microphone
Band: 863 - 865 Mhz
Maximum operating distance: up to 30 metres
Frequency response: 50Hz-15kHz
Noise signal ratio: -105dB
Cardioid type condenser headset
Low-profile desktop receiver with two foldable antennas
Up to 3 systems usable in the same location on different frequencies, the simultaneous use depends on the possible interferences caused by other transmitters
ABS carrying and storage case



WM202KIT

Fixed frequency wireless system with hand-held microphone + headset
Band: 863-865 Mhz
Maximum operating distance: up to 30 metres
Frequency response: 50Hz-15kHz
Noise signal ratio: -105dB
Cardioid type of dynamic capsule
Cardioid type condenser headset
Low-profile desktop receiver with two foldable antennas
Up to 3 systems usable in the same location on different frequencies, the simultaneous use depends on the possible interferences caused by other transmitters
ABS carrying and storage case



RMW1000M

Diversity Wireless Microphone Receiver kit LCD Display
 PLL UHF True Diversity reception
 638÷662MHz band
 PLL hand-held transmitter
 Frequency response 50Hz-15kHz
 -105dB signal / noise ratio
 99 channels
 Automatic channel scan
 IR sync
 ABS carrying and storage case



RMW1000H

BodyPack Wireless Microphone Receiver Kit LCD Display
 PLL UHF True Diversity technology reception
 638÷662MHz band
 PLL BodyPack transmitter
 Frequency response 50Hz-15kHz
 -105dB signal/noise ratio
 99 channels
 Automatic channel scan
 IR sync
 ABS carrying and storage case



HCM10V2

Condenser headset microphone with back-electret capsule
 Cardioid polar pattern Professional performance for singers and presenters The beige colour makes it particularly suitable in situations where microphone visibility must be minimised without sacrificing quality 3 Adapters included for use with leading brands of wireless microphones (mini XLR 4-pin, mini JACK 3.5mm, mini XLR 3-pin)



LCH200

Lavalier microphone for RMW microphone
 5 mm condenser capsule Omni-directional polar pattern Tie-clip connection Anti-pop screen Extremely reduced dimensions Usable with mini connection wireless systems
 XLR 4 poles (RMW)

MICROPHONES



PA RKBKIT

19" Rack mounting brackets for PLL Receiver on 1 Rack Unit



PA RKB2KIT

19" Rack mounting brackets for 2 PLL Receiver on 1 Rack Unit



PA UHFSPLITAL

Active UHF antenna active distributor
Working frequency: 600-740MHz
Power Supply: 110-230V~ 50/60Hz - 12Vdc adapter
Dimensions (WxHxD): 482x44x200mm
Weight: 1.7 kg



ANT700

Directional UHF antenna 630 -700MHz



RACK AND ACCESSORIES

RACK AND ACCESSORIES



STUDIORKXL08

19" Standard 8 Unit professional Rack container, matt black painted steel, 4 castors
Dimensions (WxHxD): 560x467x580mm
Weight: 17,9 Kg



PXCOVER08N

Plexiglass door for 8-unit STUDIORKXL



STUDIORKXL12

19" Standard 12 Unit professional Rack container, matt black painted steel, 4 castors
Dimensions (WxHxD): 560x646x580mm
Peso: 21,7 Kg



PXCOVER12N

Plexiglass door for 12-unit STUDIORKXL



STUDIORKXL36

19" Standard 36 Unit professional Rack container, matt black painted steel, 4 castors
Dimensions (WxHxD): 560x1718x580mm
Peso: 39 Kg



PXCOVER36N

Plexiglass door for 36-unit STUDIORKXL



PA STF1

Bracket for heavy apparatus racks using purposes (AUP120/240/480/AUP4125/4250s etc.). Suitable for STUDIORKXL series rack



FSR2260

19" Standard 22 Unit professional Rack container, matt black painted steel, with openable door, sides and back, 4 castors. Top with fan unit with thermostat.
Dimensions (WxHxD): 600x1093x600mm



FSR2760

19" Standard 27 Unit professional Rack container, matt black painted steel, with openable door, sides and back, 4 castors. Top with fan unit with thermostat.
Dimensions (WxHxD): 600x1313x600mm



FSR3260

19" Standard 32 Unit professional Rack container, matt black painted steel, with openable door, sides and back, 4 castors. Top with fan unit with thermostat.
Dimensions (WxHxD): 600x1533x600mm



FSR3760

19" Standard 37 Unit professional Rack container, matt black painted steel, with openable door, sides and back, 4 castors. Top with fan unit with thermostat.
Dimensions (WxHxD): 600x1753x600mm



FSR4260

19" Standard 42 Unit professional Rack container, matt black painted steel, with openable door, sides and back, 4 castors. Top with fan unit with thermostat.
Dimensions (WxHxD): 600x2000x600mm



FSRSHELF02

19' rack metal sliding shelf to be used on the new FSR rack cabinets only Matt black finish

RACK AND ACCESSORIES



PA ACC

50A Circuit breaker main switch 19" Rack panel with 6 VDE sockets.
1 Modular unit height.



SDC150

19" 2U rack sheet metal reversible box wired with 8 European Standard sockets 16A/ 250V



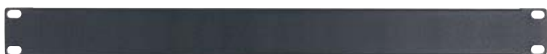
RK3L

3-unit 19" rack blank panel



RK4L

4-unit 19" rack blank panel



RK1L

1-unit 19" rack blank panel



RK2L

2-unit 19" rack blank panel



RK1NV

19" 1 rack unit ventilation panel



RK2NV

19" 2 rack unit ventilation panel



RK4N

19" 1U Rack Panel
4 Plug mounting holes for XLR/SPEAKON panel



RK6N

19" 1U Rack Panel
6 Plug mounting holes for XLR/RCA/SPEAKON panel



RK8N

19" 1U Rack Panel
8 Plug mounting holes for XLR/RCA/SPEAKON panel



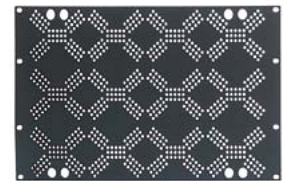
RK12N

19" 1U Rack Panel
12 Plug mounting holes for XLR/RCA/SPEAKON panel



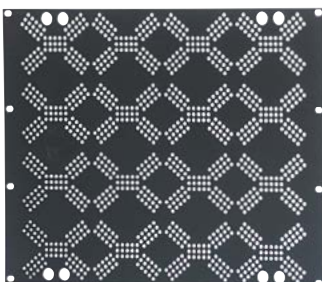
RK2VP

2-unit back protection Rack panel



RK6VP

6-unit back protection Rack panel



RK8VP

8-unit back protection Rack panel

RACK AND ACCESSORIES



ADRK2AZ

19" 2U rack assembly shelf/adaptor



ADRK3AZ

19" 3U rack assembly shelf/adaptor



ADRK3CR

Lockable 19" 3U rack metal drawer



ADRK4CR

Lockable 19" 4U rack metal drawer



VOLUME CONTROLS

VOLUME CONTROLS



PA TRV12A

Recessed volume attenuator for 100V lines. 12W transformer on European square box. With 24Vdc bypass relay.



PA TRV50A

Recessed volume attenuator for 100V lines. 50W transformer on European square box. With 24Vdc bypass relay.



PA TRV6B

Recessed volume attenuator for 100V lines. 6W transformer on 503 box. With 24Vdc bypass relay.



PA TRV30B

Recessed volume attenuator for 100V lines. 30W transformer on 503 box. With 24Vdc bypass relay.



PA TRV60B

Recessed volume attenuator for 100V lines. 60W transformer on 503 box. With 24Vdc bypass relay.



PA TRV120B

Recessed volume attenuator for 100V lines. 120W transformer on 503 box. With 24Vdc bypass relay.



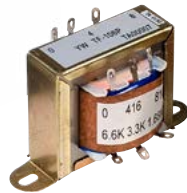
PA TR50ST

Stereo volume attenuator for 4/8/16 Ω speakers, 12 positions, 2x50W maximum power handling, dedicated box for flush mounting.



LINE TRANSFORMERS

LINE TRANSFORMERS



PA TR24

Audio transformer: 100V-24/12/6/3/1.5W
Primary impedance: 416-816-1660-3300-6600Ω
Secondary impedance: 8-4Ω



PA TR40

Audio transformer: 100V-40/20/10/5/2.5W
Primary impedance: 250-490-1000-2000-4000Ω
Secondary impedance: 8-4Ω



PA TR100

100/70V-100W audio transformer
Secondary impedance: 16-8-4Ω



PA MATCHBOX

Universal audio adapter and decoupler with isolation transformer.
LINE/LINE - 100V/LINE



CABLES AND CONNECTORS

CABLES AND CONNECTORS



HPC90

Balanced coaxial cable for installation with flexible overall jacket - O.F.C. (Oxygen Free Copper).
Price per metre can be ordered on 100m reels



HPC210BK

"High-quality" balanced microphone cable with flexible overall jacket - O.F.C. (Oxygen Free Copper). Outer diameter 6,5 mm Price per metre can be ordered on 100m reels



HPC210FR

Balanced microphone cable with flexible flame resistant overall jacket - O.F.C. (Oxygen Free Copper).
Outer diameter 5,6 mm
Price per metre can be ordered on 100m reels



HPC610BK

Flexible 2 twisted conductors (2 x 1,5 mm²) speaker cable, small external diameter.
Price per metre can be ordered on 100m reels



HPC620BK

Flexible 2 twisted conductors (2 x 2,5 mm²) speaker cable, small external diameter.
Price per metre can be ordered on 100m reels

LAN5S

New professional CAT. 5e S-FTP cable for Ethernet connections, featuring unique inner filler to maintain electrical characteristics in portable applications; double shielding manufactured from aluminum-mylar foil and tinned copper braid. Particularly suitable for mobile applications. The outer sleeve is manufactured from polyurethane compound.



HPC813

Single-shielded antenna cable.
Price per metre can be ordered on 100m reels



BULK250LU5

Standard XLR plug/socket professional cable
Length: 5m



BULK250LU10

Standard XLR plug/socket professional cable
Length: 10m



BULK250LU15

Standard XLR plug/socket professional cable
Length: 15m



BULK210LU2

Professional cable with XLR socket/6,3 mm stereo jack connectors
Length: 2m



CHLP250LU15

Stereo adapter cable with 2 RCA plugs/2 RCA plugs
Length: 1,5 mm



CHLP260LU15

Adapter cable with RCA plug/XLR plug
Length: 1,5 mm



CHLP270LU15

Adapter cable with RCA plug/XLR socket
Length: 1,5 mm

CABLES AND CONNECTORS



XLR3FVPRO

Professional 3-pole XLR cable mount female socket, nickel plated die cast aluminium shell and nickel plated aluminium coupling ring



XLR3MVPRO

Professional 3-pole XLR cable mount male plug, nickel plated die cast aluminium shell and nickel plated aluminium coupling ring



XLR5FVPRO

5-pole XLR cable mount female socket, nickel plated



XLR5MVPRO

5-pole XLR cable mount male plug, nickel plated



MRCA25BK

RCA cable mount male plug with gold plated contacts, black aluminium shell and Ø 6.2 mm flexible cable spring



AT290

Professional metal adapter: 3-pole XLR female socket -> Ø 6.3 mm. mono jack male plug



AT510

Professional metal adapter: 3-pole XLR female socket -> RCA male plug



S5CPRO

Ø6.3mm Stereo jack, nickel plated brass shell and flexible cable spring



NL4FC

Neutrik, Professional "SPEAKON" 4-pole female cable mount connector with cable strain relief for Ø4-7mm cable - 30A continuous by contact



NL2FX

Neutrik, Professional "SPEAKON" 2-pole female cable mount connector with cable strain relief for Ø4-7mm cable - 30A continuous by contact



NL2MP

Neutrik 'SPEAKON' panel mount male receptacle with small square flange, air tight. 2 poles



NL4MP

Neutrik 'SPEAKON' panel mount male receptacle with small square flange, air tight. 4 poles



FRCA20RD

RCA panel socket. Colour Red



FRCA20WH

RCA panel socket. Colour White



XLR3MDL

3-pole XLR panel mount solder aluminium male receptacle



XLR3FDL

3-pole XLR panel mount solder aluminium female receptacle with latch
Colour: Nickel



XLR5MDL

5-pole XLR panel mount solder aluminium male receptacle



XLR5FDL

5-pole XLR panel mount solder aluminium female receptacle with latch
Colour: Nickel



NE8FDV

Neutrik RJ45 panel mount female receptacle

ALPHABETICAL INDEX

CODE	PAGE	CODE	PAGE	CODE	PAGE
AC169	55	FREE10LT	28	NL2MP	83
ADRK2AZ	74	FSR2260	71	NL4FC	82
ADRK3AZ	74	FSR2760	71	NL4MP	83
ADRK3CR	74	FSR3260	71	OST110BK	64
ADRK4CR	74	FSR3760	71	PA 24VDC12A	10
AE300	6	FSR4260	71	PA 24VDC6A	10
AE604	6	FSRSHELF02	71	PA ACC	72
ANT700	68	HCM10V2	67	PA AMIX54Z	36
APM20	65	HPC210BK	80	PA AMIX63	36
APM30	65	HPC210FR	80	PA AMP03	32
APM35B	65	HPC610BK	80	PA AMP03VR	32
APM40	65	HPC620BK	80	PA AMP160XL	32
APM50BK	65	HPC813	80	PA AMP240V4	32
APM60BK	65	HPC90	80	PA ATMP160XL	40
AT290	82	HPX1200	34	PA AUP160D	33
AT510	82	HPX2400	34	PA AUP240R	33
BULK210LU2	81	HPX2800	34	PA AUP4125S	33
BULK250LU10	81	HPX4600	34	PA AUP4250S	33
BULK250LU15	81	HPX6000	34	PA BM01	19
BULK250LU5	81	HPX900	34	PA BM04	19
CHLP250LU15	81	KP210	55	PA BM08	19
CHLP260LU15	81	KP560	56	PA BM101	62
CHLP270LU15	81	KP565	56	PA BM102	62
DM580LC	64	KPTFL12	56	PA BM103T	63
DS110SP	60	KPTFL5	56	PA BM16	19
DS112P	60	KPTFL5W	56	PA BM8X8	17
DS112PT	60	KPTFL8	56	PA BMCD	25
DST100	65	KPTNX03	55	PA BMDD	25
DST110BK	65	KPTNX04	55	PA BMG2	62
FLASH12XP	54	LAN5S	80	PA BMS4	63
FLASH5PV2	54	LCH200	67	PA C0120S15	47
FLASH5PWV2	54	M1622USB	37	PA C030S5	46
FLASH8XP	54	M822USB	37	PA C04006	47
FRCA20RD	83	MRCA25BK	82	PA C04012	47
FRCA20WH	83	NE8FDV	83	PA C060S10	46
FRE300BK	55	NL2FX	82	PA CONFD	25

CODE	PAGE
PA COVER6X	43
PA COVERCS	44
PA CS 56EN	12
PA CS 66EN	12
PA CS20SL	45
PA CS30HFT	46
PA CS30SL	45
PA CS6TALEN	45
PA CSB10	46
PA CSE06T	44
PA CVMF13	26
PA CVMF3	26
PA CVMF6	26
PA CVMM3	26
PA DBE01	7
PA DBE06	7
PA DBE108	7
PA DBE108E	7
PA DBEVF	7
PA DWSKIT	25
PA EV MCL1Z	8
PA EV MCL2Z	8
PA EV PROM5Z	8
PA EV PROS8Z	8
PA EXBM8X8	17
PA EXCONFD	26
PA FGS20	49
PA FREE1	28
PA FSHIFTER	36
PA H16R	48
PA HD60T	48
PA HS 30EN	14
PA HS15AL	48
PA HS30	49
PA HS30AL	48
PA HSPL30	42

CODE	PAGE
PA HSPL40	43
PA INCOM	22
PA KITEVAC	14
PA LOC02	16
PA MATCHBOX	78
PA MATRIX88	16
PA MDA250	9
PA MDA500	9
PA MDAC8	9
PA MEG25	29
PA MG400	63
PA MG500	63
PA MIC62W	64
PA MO 30BEN	13
PA MO 30WEN	13
PA PR 520BEN	13
PA PR 520EN	13
PA PR 620EN	14
PA PR10PL	42
PA PR10PLB	42
PA PR30PL	42
PA PROX	29
PA PROX2	29
PA R88	16
PA R88L	16
PA RBOX1	17
PA RBOX2	17
PA RKB2KIT	68
PA RKBKIT	68
PA SC1	47
PA SC2	47
PA SNBK	50
PA SNWH	51
PA SOURCE	40
PA STF1	70
PA STONE	49

CODE	PAGE
PA TR100	78
PA TR24	78
PA TR40	78
PA TR50ST	76
PA TRV120B	76
PA TRV12A	76
PA TRV30B	76
PA TRV50A	76
PA TRV60B	76
PA TRV6B	76
PA UHFSPITAL	68
PA WS 56EN	12
PA WS 66EN	12
PA WS04	43
PA ZONE8	18
PA ZONE8SLAVE	18
PC260	37
PXCOVER08N	70
PXCOVER12N	70
PXCOVER36N	70
RK12N	73
RK1L	72
RK1NV	72
RK2L	72
RK2NV	72
RK2VP	73
RK3L	72
RK4L	72
RK4N	73
RK6N	73
RK6VP	73
RK8N	73
RK8VP	73
RMW1000H	67
RMW1000M	67
RSM200BK	64

ALPHABETICAL INDEX

CODE	PAGE
S5CPRO	82
SC965P	60
SDC150	72
SPSK105BKF5	55
STUDIORKXL08	70
STUDIORKXL12	70
STUDIORKXL36	70
SW110AV2	57
SW110PV2	57
SW115AV2	57
SW118P	57
WCS1000CH	24
WCS1000CV2	24
WCS1000DV2	24
WCS1000RXV2	24
WM202H	66
WM202KIT	66
WM202M	66
X30TB	52
X30TW	52
X50CT	45
X50TB	52
X50TW	52
XE35TB	50
XE35TW	51
XE51CT	44
XE55TB	50
XE55TW	51
XE65CT	44
XE65CTX	43
XE65TB	50
XE65TW	51
XLR3FDL	83

CODE	PAGE
XLR3FVPRO	82
XLR3MDL	83
XLR3MVPRO	82
XLR5FDL	83
XLR5FVPRO	82
XLR5MDL	83
XLR5MVPRO	82



Centrum Nauki i Techniki, Budynek Wiatraków

ul. Wybrzeże Kosciuszki, Tamka, most Świętokrzyski, ul. Złotych

Praga, Molekularni, Pl. Tytusa Krzyży

PROEL

ITALY

Proel Lab Spa
Acquaviva Picena

UK

Proel International Ltd.
London

KOREA

Proel Korea Co. Ltd.
Gyunggi-Do

MALAYSIA

Proel Malaysia Snd. Bhd.
Petaling Jaya

USA

Proel North America Inc.
Los Angeles

TUNISIE

Proel Tunisia Sarl
Tunisi

PROEL SPA

(Worldwide Headquarters)
Via alla Ruenia, 37/43
64027 Sant'Omero (TE) - ITALY
Tel. +39 0861 81241
Fax +39 0861 887862
P.I. 00778590679
N.Reg.AEE IT 08020000002762

info@proel.com
www.proel.com

