



Centrum Nauki Kopernik, Bulwary Wiślane  
ul. Wybrzeże Kościuszkowskie, Tamka, most Świętokrzyski, ul. Zajęcza  
bus 30 Praga, Mariensztat, Pl. Tłoczek, Krzyż, To

# COMMERCIAL AUDIO PRODUCT GUIDE

**PROEL** 





**PROEL** 

EN54 Evacuation systems	5
Speakers for EN54 evac applications	11
Audio systems	15
Intercoms	21
Conference systems	23
Portable systems	27
Amplifiers	31
Pre-amplifiers/Mixers and processors	35
Receivers and audio sources	39
Sound speakers	41
Professional sound speakers	53
LNE Systems	59
Microphones	61
Rack and accessories	69
Volume controls	75
Line transformers	77
Cables and connectors	79

# INDEX

---









## EN54 EVACUATION SYSTEMS

---



# EN54 EVACUATION SYSTEMS



## AE604

Wall mounted All-In-One voice alarm system compliant with **EN54-16** with testing and charge circuit compliant with **EN54-4**.

4 Zones System on redundant loudspeaker line and back up Amplifier.

Main and backup amplifier in class D "Pure Path"<sup>TM</sup>.

300W @ 100V on redundant loudspeaker line (A + B). The system does not require a line end resistor.

The system ensures full power performance even with backup power.

Processing circuit by DSP; balanced and isolated background music input, isolated and balanced background music microphone input with selectable 48Vdc phantom power supply and priority activation by contact; monitored input for remote emergency call stations; front panel fitted with monitor loudspeaker, monitored emergency PPT microphone, direct sending message keys, navigation keys, large display with LCD dot matrix. Line output for active sub-woofer; audio messages stored on uSD 16bit 48kHz: 8 general purpose messages with activation from dedicated input contacts or incorporated scheduler, 8 monitored contacts for emergency announcement activation.

4 12Vdc batteries 18Ah not included.

*\*Availability: 3° quarter*



## AE300

Wall mounted All-In-One voice alarm system compliant with **EN54-16** with testing and charge circuit compliant with **EN54-4**.

Main and backup amplifier in class D "Pure Path"<sup>TM</sup>.

300W @ 100V on redundant loudspeaker line (A + B). The system does not require a line end resistor.

The system ensures full power performance even with backup power.

Processing circuit by DSP; balanced and isolated background music input, isolated microphone input with selectable 48Vdc phantom power supply and priority activation by contact; monitored input for remote emergency call stations; front panel fitted with monitor loudspeaker, monitored emergency PPT microphone, direct sending message keys, navigation keys, large display with LCD dot matrix.

Line output for active sub-woofer; audio messages stored on uSD 16 bit 48kHz: 8 general purpose messages with activation from dedicated input contacts or incorporated scheduler, 2 monitored contacts for emergency announcement activation.

4 12Vdc batteries. 7.2Ah not included

Dimensions (WxHxD): 440x495x155mm

Certification EN 54-16:2008 0051-CPR-0514





## PA DBE01

Fully monitored desk call station according to **EN54-16**. Software programmable "Talk" key, "Busy" and "System" LEDs, dynamic gooseneck microphone, automatic compressor, level adjustment trimmer Wiring by RJ45 connector and CAT5 Cable.



## PA DBE06

Fully monitored desk call station according to **EN54-16**. Software programmable capacitive selection keys, "Talk" and "Busy" Keys, "System" LEDs, dynamic gooseneck microphone, automatic compressor, level adjustment trimmer Wiring by RJ45 connector and CAT5 Cable. Power supply from RJ45 cable or 24Vdc local adaptor.



## PA DBE108

Fully monitored desk call station according to **EN54-16**. 10 keys dial keyboard, "Talk" and "Clear" key, 3 Evac activation keys, touch screen quarter VGA TFT display, dynamic gooseneck microphone, DSP audio processing. All keys and functions are software programmable. Wiring by RJ45 connector and CAT5 Cable. Power supply from RJ45 cable or 24Vdc local adaptor.



## PA DBE108E

Fully monitored Ethernet desk call station according to **EN54-16**. Connects to networkable Proel Evac System. 10 keys dial keyboard, "Talk" and "Clear" key, 3 Evac activation keys, touch screen quarter VGA TFT display, dynamic gooseneck microphone, DSP audio processing. All keys and functions are software programmable. Wiring by RJ45 connector and CAT5 Cable. Power supply from RJ45 cable or 24Vdc local adaptor.



## PA DBEVF

Fully monitored, wall-mount, red metal box, **EN54-16** Firemen's call station with handheld PTT Microphone. Fully software programmable, with status LEDs. Access to the security and fire alarm features system is granted by a key-lock. "EVAC" and "ALARM" Remote Message Activation Button. Wiring by RJ45 connector and CAT5 Cable. Power supply from RJ45 cable or 24Vdc local adaptor.



# EN54 EVACUATION SYSTEMS



## PA EV PROM5Z

Digital Master matrix certified **EN 54-16**

Up to 5 slots for direct plug-in modules for the Amplifier/line control.

Up to 108 zones (54 with dual-line architecture for zone A/B)

LCD display with navigation knobs for the complete unit control

Power, Fault Warning and Voice Alarm

Front USB socket for PC interface purposes

24Vdc power supply input

Spare amplifier input

Two RJ45 connectors for the Slave matrix connecting purposes

Two RJ45 connectors for the microphone units connecting (up to 108 microphone units)

Two contact activation messages and in/out programmable connectors

Common fault out

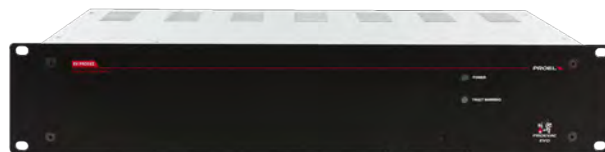
2 rack unit 19" Standard

Certificazione EN54-16:2008 0068-CPR-014



## PA EV MCL1Z

Zone module for amplifier/line control to be inserted in the Master EV PROM5Z or Slave EV PROS8Z matrix



## PA EV PROS8Z

**EN54-16** certified slave matrix

Up to 8 directly insertable modules for amplifier/line control

Power LED

Fault Warning and Voice Alarm

24Vdc power supply input

Backup amplifier input

Four RJ45 connectors for connection to the Master matrix and subsequent Slave matrix

2 standard 19" rack units

Certificazione EN54-16:2008 0068-CPR-014



## PA EV MCL2Z

Zone module for the control of the second line in the same zone amplifier, to be inserted in the Master EV PROM5Z or Slave EV PROS8Z matrix





## PA MDA250

Modular Professional Power Unit 250W - 70/100V- 4Ohm  
 Speaker short-circuit and overload protection circuit  
 Clipping Dinamic control  
 LED indicators  
 Master Level control  
 Low and high tone adjustment  
 Balanced LINE input on Euroblock terminal  
 Priority Balanced LINE input on Euroblock terminal with Gain  
 Three outputs, one of which at constant 40hm impedance and two at Constant voltage (70/100V) on Euroblock terminal  
 PA-HF Filter with rear switch  
 Ground-Lift rear selector  
 230/117V~ 50/60Hz autoswitch power supply  
 24Vdc emergency power supply  
 Dimensions (WxHxD): 116x53x250mm  
 Weight: 2.25Kg  
 Maximum 8 modules in a rack case MDA8C (3U rack 19")



## PA MDA500

Modular Professional Power Unit 500W - 70/100V- 4Ohm  
 Speaker short-circuit and overload protection circuit  
 Clipping Dinamic control  
 LED indicators  
 Master Level control  
 Low and high tone adjustment  
 Balanced LINE input on Euroblock terminal  
 Priority Balanced LINE input on Euroblock terminal with Gain  
 Three outputs, one of which at constant 40hm impedance and two at Constant voltage (70/100V) on Euroblock terminal  
 PA-HF Filter with rear switch  
 Ground-Lift rear selector  
 230/117V~ 50/60Hz autoswitch power supply  
 24Vdc emergency power supply  
 Dimensions (WxHxD): 116x53x250mm  
 Weight: 2.4Kg  
 Maximum 8 modules in a rack case MDA8C (3U rack 19")



## PA MDAC8

8 units rack case (3U rack 19") for MDA series



# EN54 EVACUATION SYSTEMS



## PA 24VDC6A

Back-up power supply control system.

Provides the back-up power supply to maintain the system in operation when there is no mains power supply.

24V input for external back-up batteries (not provided). Battery capacity 40 Ah.

The built-in charger controls the power supply circuit when the AC supply operates correctly. In case of no mains power supply, all system devices will be automatically powered by the 24VDC batteries. The system controls the power supply circuit both for the mains power supply and for battery operation by communicating the power supply status and any faults to the unit.

**EN54-4** certified system

230V/50Hz power supply

Certificazione EN54-4 0333-CPR-075382



## PA 24VDC12A

Back-up power supply control system.

Provides the back-up power supply to maintain the system in operation when there is no mains power supply.

24V input for external back-up batteries (not provided). Battery capacity 150 Ah.

The built-in charger controls the power supply circuit when the AC supply operates correctly. In case of no mains power supply, all system devices will be automatically powered by the 24VDC batteries. The system controls the power supply circuit both for the mains power supply and for battery operation by communicating the power supply status and any faults to the unit.

**EN54-4** certified system 230V/50Hz power supply.

Certificazione EN54-4 0333-CPD-075381





## **SPEAKERS FOR EN54 EVAC APPLICATIONS**

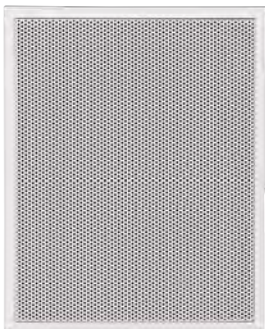
---

# SPEAKERS FOR EN54 EVAC APPLICATIONS



## PA CS-540BS

False ceiling speaker EN 54-24 BS 5839 Part 8  
Loudspeaker: 5" full range  
Power: 6/3/1.5W @100V  
Frequency response: 180-20kHz  
SPL (1W/m): 92dB  
SPL MAX (Pmax @ 1m): 99dB  
Coverage angle 1kHz/4kHz (-6dB): 120°/100°  
Colour: White  
Dimensions: Ø185-H129mm  
Complete with steel flame arrester cap  
Material: Steel  
Recess hole: Ø165mm  
Weight: 1.5 kg  
Ceramic terminal with thermal fuse  
Certification: EN 54-24:2008 / 1488-CPR-0300/W



## PA CS-651WTBS

Wall speaker, twin cone, EN 54-24 BS 5839 Part 8  
Loudspeaker: 6.5" full range  
Power: 6/3/1.5W @ 100V  
Frequency response: 150-20kHz  
SPL (1W/m): 89dB  
SPL MAX (Pmax @ 1m): 96dB  
Coverage angle 1kHz/4kHz (-6dB): 160°/80°  
Dimensions (WxHxD): 200x250x85mm  
Material: ABS  
Colour: White  
Weight: 1.75 kg  
Ceramic terminal with thermal fuse  
Certification: EN 54-24:2008 / 1488-CPR-0322/W



## PA CSE-6206EN

False ceiling speaker, with twin cone with EN 54-24 flame arrester net.  
Loudspeaker: 6.5" full range  
Power: 6/3/1.5W @100V  
Frequency response (-10dB): 90-20kHz  
SPL (1W/m): 93dB  
SPL MAX (Pmax @ 1m): 100dB  
Coverage angle 1kHz/4kHz (-6dB): 120°/60°  
Colour: White  
Dimensions: Ø220-H101.5mm  
Weight: 1.13 kg  
Recess Hole: Ø190mm  
Ceramic Terminal with thermal fuse.  
Material: Steel  
Certification: EN 54-24:2008 / 1488-CPR-0320/W



## PA WSI-501BS

Wall speaker EN 54-24  
Loudspeaker: 5" full range  
Power: 6/3/1.5W  
Frequency response: 150-18kHz (-10dB)  
SPL (1W/m): 91dB  
SPL MAX (Pmax @ 1m): 99dB  
Coverage angle 1kHz/4kHz (-6dB): 160°/100°  
Dimensions (WxHxD): 276x78.5x197mm  
Ceramic terminal with thermal fuse  
Material: Steel  
Weight: 2.15 kg  
Certification: EN 54-24 / 1488-CPR-0466/W





## PA CT-552WTBS

2-WAY wall speaker EN 54-24 BS 5839 Part 8  
 Loudspeaker: W: 5" - T: 1"  
 Power: 30/15W/7.5/3.75W @ 100V  
 30W @ 8Ω  
 Frequency response: 80Hz-20kHz  
 SPL (1W/m): 89dB  
 SPL MAX (Pmax @ 1m): 104dB  
 Coverage angle 1kHz/4kHz (-6dB): 1180°/80°  
 Dimensions (WxHxD): 192x242x190mm  
 Material: ABS UL94V0  
 Colour: White  
 Weight: 2.5 kg  
 Ceramic terminal with thermal fuse  
 Certification EN 54-24 / 1488-CPR-0313/W



## PA CT-552BTBS

2-WAY wall speaker EN 54-24 BS 5839 Part 8  
 Loudspeaker: W: 5" - T: 1"  
 Power: 30/15W/7.5/3.75W @ 100V  
 30W @ 8Ω  
 Frequency response: 80Hz-20kHz  
 SPL (1W/m): 89dB  
 SPL MAX (Pmax @ 1m): 104dB  
 Coverage angle 1kHz/4kHz (-6dB): 180°/80°  
 Dimensions (WxHxD): 192x242x190mm  
 Material: ABS UL94V0  
 Colour: Black  
 Weight: 2.5 kg  
 Ceramic terminal with thermal fuse  
 Certification EN 54-24 / 1488-CPR-0313/W



## PA SPJ-53WHBS

Outdoor / Indoor metal sound projector  
 EN 54-24 BS 5839 Part 8  
 Loudspeaker: 5" Treated polypropylene and mylar HC  
 Power: 20/10/5W @ 100V  
 Frequency response: 130Hz-20kHz (-10dB)  
 SPL (1W/m): 91dB  
 SPL MAX (Pmax @ 1m): 103dB  
 Coverage angle 1kHz/4kHz (-6dB): 130°/60°  
 Colour: White  
 Material: Aluminium  
 Dimensions: Ø140 - H207mm  
 Weight: 2.5 kg  
 Assembly: U-shaped bracket  
 Ceramic terminal with thermal fuse  
 Protection Rating: IEC 60529 IP66  
 Certification: EN 54-24 / 1488-CPR-0302/W



## PA SPJ-52WHBS

2-way Outdoor / Indoor metal sound projector  
 EN 54-24 BS 5839 Part 8  
 Loudspeaker: 2x5" Treated polypropylene + mylar HC  
 Power: 20/10/5W @ 100V  
 Frequency response: 120Hz-20kHz (-10dB)  
 SPL (1W/m): 89dB  
 SPL MAX (Pmax @ 1m): 102dB  
 Coverage angle 1kHz/4kHz (-6dB): 130°/50°  
 Colour: White  
 Material: Aluminium  
 Dimensions: Ø140 - H207mm  
 Weight: 2.5 kg  
 Ceramic terminal with thermal fuse  
 Protection rating: IEC 60529 IP66  
 Certification: EN 54-24 / 1488-CPR-0302/W

# SPEAKERS FOR EN54 EVAC APPLICATIONS



## PA CS-700WBS

Outdoor / Indoor sound projector EN 54-24 BS 5839 Part 8  
Loudspeaker: treated polypropylene 6.5" twin cone  
Power: 15/10/5/2.5W @ 100V

15W @ 8Ω

Frequency response: 120Hz-20kHz (-10dB)

SPL (1W/m): 92dB

SPL MAX (Pmax @ 1m): 105dB

Coverage angle 1kHz/4kHz (-6dB): 130°/30°

Colour: White

Material: ABS UL94V0

Dimensions (WxHxD): Ø198-H250mm

Weight: 2.35 kg

Assembly: U-shaped bracket

Ceramic terminal with thermal fuse

Protection rating: IEC 60529 IP66

Certification: EN 54-24 / 1488-CPR-0312/W



## PAPHS-81T30BS

Outdoor / Indoor horn speaker EN 54-24 BS 5839 Part 8

Power: 30/15/7.5/3.75W @ 100V

Frequency response: 340Hz-9kHz

SPL (1W/m): 108dB

SPL MAX (Pmax @ 1m): 123dB

Coverage angle 2kHz: 60°

Dimensions: Ø212-H280mm

Material: ABS UL94V0

Colour: light grey

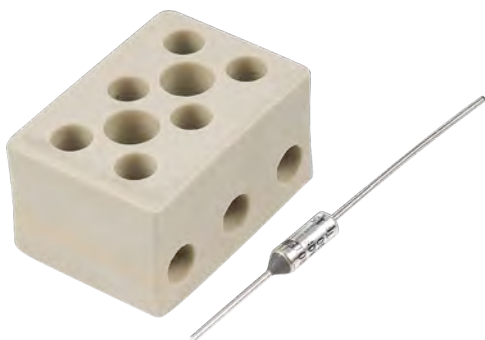
Weight: 2.35 kg

Assembly: U-shaped bracket

Ceramic terminal with thermal fuse

Protection rating: IEC 60529 IP66

Certification: EN 54-24 / 1488-CPR-0314/W



## PA KITEVAC

Kit consisting of three-pole ceramic terminal board and 152° thermal fuse





## AUDIO SYSTEMS

---

# AUDIO SYSTEMS



## PA MATRIX88

8 Inputs 8 Outputs audio matrix  
 8 music inputs (4 lines and 4 Mic/line) freely selectable in each of the 8 outputs  
 One local balanced input with gain control for each zone  
 One main microphone with selectable priority  
 8 Alarm contacts  
 One EM IN input for an external message generator with selectable priority function  
 8 RJ45 ports for CAT5 connection of 8 remote controls (one for each zone)  
 2 RJ45 ports for CAT5 connection of 2 paging consoles  
 Separate level controls for each zone  
 Display for viewing the selected input channel on each zone  
 Internal speaker for zone listening  
 230/117V~ 50/60Hz power supply  
 24Vdc Emergency power supply  
 RS485 Communication  
 Up to 4 matrixes that can be connected in cascade (32-zone system)  
 19" standard 3U rack



## PA R88

Remote Control Panel for MATRIX88  
 Allows for local volume adjustment and the selection of the sound source to be listened to.  
 CAT5 connection to the MATRIX88 station.  
 Provide local 24Vdc power supply for distances greater than 50 metres from the station.  
 Wall recessed box included.  
 Frequency response: 50Hz-18kHz  
 Power consumption: 400mA  
 Weight: 0.73Kg  
 Dimensions (WxHxD): 86x86x33mm



## PA R88L

Remote Control Panel for MATRIX88 with Integrated mixer.  
 Allows the local volume adjustment, selection of the sound source to listen and local sound source input. It also allows you to insert a line input and a microphone input, both provided with level control, in the audio zone which it is assigned to.  
 CAT5 connection to MATRIX88 station.  
 Provide local 24Vdc power supply for distances greater than 50 metres from the station. Separate recessed box included.  
 MIC Input Sensitivity: 10mV  
 Aux Input Sensitivity: 335mV  
 Aux Output: 775mV  
 Frequency response: 50Hz-18kHz  
 Power consumption: 400mA  
 Weight: 0.153Kg  
 Dimensions (WxHxD): 86x146x33mm



## PA LOC02

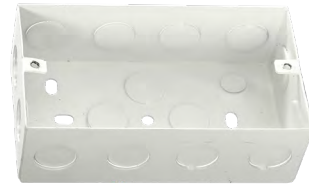
Remote wall panel, fitted with two XLR microphone inputs, which works in conjunction with the MATRIX88 central unit. It allows the two connected microphones to operate in the audio zone which the remote control is assigned to. You can silence the music programme coming from the central unit (MATRIX88) with the MUTE key and allow the playback of only the signal coming from the two microphone inputs. For each microphone input, the panel allows for the separate adjustment of volumes and tone levels. The connection between the panel and matrix is made using a UTP CAT5 cable, which is also used to power the panel by means of the matrix up to a distance of 50 metres; greater distances may require local additional power supply (+24Vdc). LOC02 has a dedicated recessed wall metal box.  
 MIC Input Sensitivity: 10mV  
 Frequency response: 50Hz-18kHz  
 Signal-to-Noise Ratio: MIC ≥65 dB - BGM ≥75 dB  
 Power consumption: 400mA  
 Weight: 0.161Kg  
 Dimensions (WxHxD): 86x146x33mm





## PA RBOX1

Metal box for wall mounting R88 module



## PA RBOX2

Metal box for wall mounting R88L and LOC2 modules



## PA BM8X8

Digital Microphone Base for MATRIX88 announcements  
 SPL (1W/m): 4mV/Pa  
 Frequency response: 150Hz-8kHz  
 Power Supply: 24Vdc  
 300 mm cardioid gooseneck  
 Output connector: RJ45  
 Dimensions (WxHxD): 232x61x131mm  
 Weight: 0.95 kg



## PA EXBM8X8

Expansion unit for BM8X8 paging console. If you wish to expand a system to 16-24-32 zones, the BM8X8 call console must be fitted with 16-24-32 zone selection buttons for the paging operations.  
 Note: The BM8X8 can be connected with a maximum of 3 EXBM8X8 modules, in cascade.

# AUDIO SYSTEMS



## PA ZONE8

8-Zone Voice/Music management system  
5 switched music inputs (Tape-CD-Tuner-AUX1-AUX2)  
Total level control of the call stations  
Music signal level control.  
ON/OFF controls to activate music on the zones  
LED light of zone occupied by the microphone call  
Priority input for emergency alert microphone.  
Command to activate two-tone siren according to DIN33404  
Line output for possible total recording of events.  
6 RJ45 inputs for CAT5 connection of the microphone stations  
(max 18 micro bases).  
Audio output on the 8 zones presettable at 100V or 0dB  
depending on the configuration used.  
24Vdc bypass command available for each zone for local volume  
attenuators.  
3 audio inputs with automatic activation (VOX) respectively for:  
automatic/additional free input telephone calls/messages.  
230 V~ - 24Vdc power supply for emergency.  
ZONE8 uses 3 operating configurations:

- A With unique amplifier - Call in the relevant zone/Music present in the zones only with system in stand-by.
- B With two amplifiers - Call in the relevant zone/ Music always present even in the zones not concerned by the call.
- C With eight or more amplifiers - Call in the relevant zone/Music always present in the zones not concerned by the call. Large installation system.



## PA ZONE8SLAVE

16-zone extension panel for ZONE8  
ON/OFF controls to activate music on the zones  
Occupied zone LED light.  
Audio output on the 8 zones presettable at 100V or 0dB depend-  
ing on the configuration used.  
24Vdc bypass command available for each zone for local volume  
attenuators.  
230V~ 50/60Hz - 24Vdc power supply for emergency.





## PA BM01

Digital Microphone Base for general announcements  
Makes the microphone call only in general mode. ALL key to engage the zones in general mode, TALK key to make the speakerphone announcements with the relative activation LED lights.



## PA BM04

Digital Microphone Base for 4-zone announcements  
Makes the microphone call on the individual zones or in general mode. ALL key to engage the zones in general mode, TALK key to make the speakerphone announcements with relative activation LED lights. Additional four/eight/sixteen keys to select the microphone call on as many zones. The zone activation is highlighted by its LED.



## PA BM08

Digital Microphone Base for 8-zone announcements  
Makes the microphone call on the individual zones or in general mode. ALL key to engage the zones in general mode, TALK key to make the speakerphone announcements with relative activation LED lights. Additional four/eight/sixteen keys to select the microphone call on as many zones. The zone activation is highlighted by its LED.



## PA BM16

Digital Microphone Base for 16-zone announcements  
Makes the microphone call on the individual zones or in general mode. ALL key to engage the zones in general mode, TALK key to make the speakerphone announcements with relative activation LED lights. Additional four/eight/sixteen keys to select the microphone call on as many zones. The zone activation is highlighted by its LED.









## INTERCOMS



# INTERCOMS



## PA INCOM

---

Intercom for Counters

Full-duplex or Half-duplex operating modes

Level and gain control on both channels

+3dB command for temporary doubling  
of the user-side power

Integrated antilarsen device

Inputs: 1x MIC

Outputs: 1x LINE, 1x REC, 1x SPEAKER

Output level: LINE: 500mV / 600Ω - REC: 500mV / 600Ω

Controls: 1 volume control for external loudspeaker -

1 volume control for internal loudspeaker - 1 level control VOX - PA

CALL - SPEAK +3dB - PRIORITY SWITCHES

Frequency response: 300Hz-10kHz (-3dB)

S/N Ratio: > 80dB

Microphone: One-way Electret

Power supply: 230/14V~

Gooseneck length: 330mm

Dimensions (W x H x D): 268x131x61mm

Weight: 1 kg



## CONFERENCE SYSTEMS

---

# CONFERENCE SYSTEMS



## WCS1000RXV2

The WCS1000 system is the Proel solution for all debate or conference applications in small, medium or large structures in which the use of a wired system is not convenient or feasible. Thanks to the 256 supported bases and the wide WCS1000 transmission range, it is the ideal choice to ensure full freedom of use and extreme simplicity and rapidity of installation with no wiring.

WS1000RX Main receiving unit

PLL UHF - 5 active channels (1 president - 4 delegate)

Three operating modes: FIFO, LIMIT MODE, PRESIDENT

Two rack units

Dimensions (WxHxD): 485x85x355mm

Weight: 7 kg



## WCS1000CV2

President microphone station for WCS1000 series wireless conference system

Base with removable and rechargeable batteries via the WCS1000CH charging case

PLL UHF Transmitter

One-way condenser microphone

Priority key

Three function keys

Microphone on button

Power supply: 3 x 1.5V batteries

RF coverage: 50 metres

Frequency range: 610-670MHz

16 selectable channels

Dimensions (HxWxD): 58x178x115mm

Weight: 0.7 kg



## WCS1000DV2

Delegate microphone station for WCS1000 series wireless conference system

Base with removable batteries and rechargeable via the WCS1000CH charging case

PLL UHF Transmitter

One-way condenser microphone

Three function keys

Microphone on button

Power supply: 3 x 1.5V batteries

RF coverage: 50 metres

Frequency range: 610-670MHz

16 selectable channels

Dimensions (HxWxD): 58x178x115mm

Weight: 0.7 kg



## WCS1000CH

Battery charger case for WCS1000 system.

Ability to recharge 16 microphone stations.

Consumption: 200W

Maximum charge current: 700mA

Charge time: approx. 10 hours

Dimensions (HxWxD): 175x620x370mm

Weight: 9 kg

Portable with handle





## PA DWSKIT

Wireless Discussion system composed of DWS receiving unit with four BMW wireless bases and battery charger.

Dual Display

Navigation keys

Level control of each individual microphone base

Infrared technology for setting the operating frequency

Mixed balanced and unbalanced output

Individual outputs for each channel

Channelled frequency mode or Tuning

Separate Squelch control for each individual Band

Wireless console with display and light ring to indicate the operational condition

Capacity: 50/60m

Metal case with 1 standard 19" rack unit

Two frequency ranges available: a: 610÷670 MHz

b: 730÷790MHz



## PA CONF

Conference and discussion system made in digital technology in compliance with IEC914 and ISO Standards.

Power supply and direct control of 64 microphone units

President base with priority

Three modes of operation of interventions: FREE MODE, LIMIT MODE and FIFO MODE

One MICRO and one LINE Input for external units

TAPE outputs for recording and LINE for room amplification (balanced and unbalanced)

Possibility of inserting an audio processor in the chain

Microphone SPL (1W/m) level control

Unit monitor loudspeaker level control



## PA BMCD

President microphone unit with "SPEAK" key, "PRIORITY" key and LED light of electret condenser microphone activated functions mounted on flexible stem with light ring, built-in monitoring loudspeaker with volume control, headphone jack. 2m Long Y-connector cable provided.

Base Dimensions (WxHxD): 235x54x110mm

Gooseneck length: 390mm

Weight: 1.15 kg



## PA BMDD

Delegate microphone unit with "SPEAK" key and LED light of electret condenser microphone activated functions mounted on flexible stem with light ring, built-in monitoring loudspeaker with volume control, headphone jack. 2m Long Y-connector cable provided.

Base Dimensions (WxHxD): 235x54x110mm

Gooseneck length: 390mm

Weight: 1.15 kg

# CONFERENCE SYSTEMS



## PA EXCONFD

---

Expansion unit for CONF system. Each expansion unit can be connected with a maximum of 60 bases spread over 6 lines (never exceed 30 units per line). Using four expansion units, the system can control up to a maximum of 254.



## PA CVMF13

---

MALE-FEMALE 13 m 8-Pin extension cable



## PA CVMF6

---

MALE-FEMALE 6 m 8-Pin extension cable



## PA CVMF3

---

MALE-FEMALE 3 m 8-Pin extension cable



## PA CVMM3

---

MALE-MALE 3 m 8-Pin extension cable



## PORTABLE SYSTEMS

---



# PORTABLE SYSTEMS



## PA FREE1

Shoulder amplified system.  
35W Amplifier  
BLUETOOTH interface  
USB/SD-card reader with illuminated alphanumeric display and separate volume control  
1 UHF wireless microphone (band 863-865MHz) - separate volume control  
1 mic in with 6.3 mm jack - separate volume control  
1 line in with 3.5 mm jack - separate volume control  
2-way loudspeakers  
Built-in lead-acid battery operation  
12Vdc / 3AH (duration up to 3 hours)  
Switching power supply included  
Indication of the charging status  
Sturdy ABS cabinet, with handle and M6 thread belt for dedicated optional rod mounting SPSK105BKF5  
Protective shoulder bag with front opening to allow use during operation



## FREE10LT

Compact and portable battery operated combined amplification system.  
Includes one MP3 reader with USB port, SD slot and BLUETOOTH connection, equipped with wide display and remote control.  
UHF PLL wireless module (863-865 MHz)  
Including MEDIA PLAYER with USB port, SD slot and BLUETOOTH audio connection, LCD display and IR remote control  
2 MIC/LINE + 1 STEREO LINE inputs,  
1 LINE output  
Controls: HIGH + LOW EQ  
Built-in EFFECT  
Amplifier: 120W  
1" horn loaded compression driver and 10" woofer  
3/4 hours of battery operation



## PA PROX

Battery powered mobile amplified system  
Two horn loudspeakers on pole  
Prof. handheld VHF wireless microphones, compartment for second wireless microphone receiver (opt.)  
Power: 2x 25W  
Frequency band: 214.82MHz standard (209.15MHz optional for second RF mic)  
Frequency response: 150Hz-16kHz (-3dB)  
Operating temperature: 0-40°C  
Inputs: 2x RF MIC - 1x MIC - 1x MP3 - 1x AUX  
Input sensitivity: MIC: 1.5mV / 10 KΩ - Phantom power - MP3: 150mV / 47 KΩ - AUX: 150mV / 47 KΩ  
Power supply: 230V~ 50/60Hz (17Vdc/6A battery inside)  
Input connectors: MIC: 1x XLR - MP3: 1x JACK 3.5mm - AUX: 1x RCA  
Dimensions: 300x1450x500mm  
Weight: 5.5Kg  
Notes: 1 VHF microphone included  
Autonomy: 4 hours



## PA PROX2

Battery powered mobile amplified system  
Two horn loudspeakers on pole  
Two prof. handheld VHF wireless microphones  
Loudspeaker: 2 Horn speakers  
Power: 2x 25W  
Frequency band: 214.8MHz standard (209.15MHz optional for second RF mic)  
Frequency response: 150Hz-16kHz (-3dB)  
Operating temperature: 0 - 40°C  
Inputs: 2x RF MIC - 1x MIC - 1x MP3 - 1x AUX  
Input sensitivity: MIC: 1.5mV / 10KΩ - Phantom power - MP3: 150mV / 47KΩ - AUX: 150mV / 47KΩ  
Power supply: 230V~ 50/60Hz (17Vdc/6A battery inside)  
Input connectors: MIC: 1x XLR - MP3: 1x JACK 3.5mm - AUX: 1x RCA  
Dimensions: 300x1450x500mm  
Weight: 5.5Kg  
Notes: 2 VHF microphones included  
Autonomy: 4 hours

## PA MEG25

ABS handheld / shoulder belt megaphone  
Power: 25W  
Power Supply: 8x C type batteries not supplied  
Autonomy: approx. 15 hours  
Dimensions: Ø230 - H350mm  
Weight: 1.65 kg









## AMPLIFIERS

---

# AMPLIFIERS



## PA AMP03VR

Compact amplifier 30W, outputs 4/8/16 $\Omega$  - 100V  
MP3 file recorder/player module  
Two MIC inputs  
One PHONO/AUX input switchable by selector  
LED power indicator  
Master volume control  
Separate MIC1 and MIC2 microphone volume controls  
AUX volume control  
Low and high tone adjustment  
Screw for earth connection  
Four outputs, three of which at constant voltage (100V/70V/25V) and one at constant impedance (4W)  
MIC1 input priority function  
Optional vehicle kit with amplifier fixing bracket and fused power cable  
Power supply: 230/117V~ 50-60Hz, 12Vdc  
Weight: 4.5 Kg



## PA AMP03

Compact amplifier 30W, outputs 4/8/16 $\Omega$  - 100V  
Two MIC inputs with unbalanced 6.3 mm jack  
One AUX input and one additional PHONO rear switchable input  
LED power indicator  
Master volume control  
AUX/PHONO volume control  
Separate MIC1 and MIC2 microphone volume controls  
Low, medium and high tone controls  
Terminal for earth connection  
Four outputs, three of which at constant impedance (4/8/16 $\Omega$ ) and one at constant voltage (100W)  
MIC1 input with priority function over the other inputs  
Power supply: 230/117 V~ 50-60Hz  
Weight: 4.5 Kg



## PA AMP160XL

Professional mixer amplifier 160W - 70/100V- 4 $\Omega$   
Speaker short-circuit and overload protection circuit  
LED power indicator  
LED level indicator  
Master volume control  
Separate level controls for inputs 1÷5  
Low and high tone adjustment  
Lit knobs  
4 MIC/MIC Phantom 24/LINE balanced inputs on Euroblock terminal  
3 AUX switchable inputs from front selector  
1÷4 Inputs with VOX priority function / Contact on other inputs (selectable by dip-switch)  
MAIN - IN/OUT function  
3 outputs, one of which at constant 4 $\Omega$  impedance and two at constant voltage (70/100V)  
Independent CHIME function for each input (routing)  
REC OUT output on RCA  
Balanced line level output on Euroblock terminal  
230/117V~ 50/60Hz autoswitch power supply  
Fins to fasten to a provided 1U 19" rack  
Dimensions (WxHxD): 439x44x300 mm  
483x44x300 mm - 1U 19" rack



## PA AMP240V4

Four-zone mixer amplifier for 240W overall power.  
Four output zones at 100V selectable independently through a front keyboard  
Constant impedance outputs (4W) and constant voltage outputs (25, 70, 100V)  
Four MIC/LINE inputs with combo XLR/Jack 6.3mm  
24V Phantom power supply on 4 MIC inputs  
MIC1 input with vocal activation priority function - VOX  
One PRE-OUT output  
One AMP-IN input  
One RCA input  
One LINE OUT output  
Output level indication LED range  
Hold On and Monitor Outputs  
LED peak signal indicator  
Input LED signal presence indicator for telephone station call  
Low and high tone adjustment Master output volume control  
Volume control for each zone  
Five independent controls for input signals (INPUT 1÷INPUT 5)  
Screw for earth connection  
Rear power supply selector 230/117 V~  
Power supply: 230/117 V~ 50-60 Hz 24 Vdc  
Fins to fasten to a provided 19" 2U rack  
Dimensions (WxHxD): 420x 88x340mm  
483x88x340mm - 19" 2U rack  
Weight: 11.8 kg



## PA AUP160D

Professional power unit 160W - 70/100V- 4 $\Omega$   
 Speaker short-circuit and overload protection circuit  
 LED power indicator  
 LED level indicator  
 Master volume control  
 Low and high tone adjustment  
 Lit knobs  
 Balanced LINE input on Euroblock terminal  
 Balanced LINE output on Euroblock terminal  
 3 outputs, one of which at constant 4 $\Omega$  impedance and two at constant voltage (70/100V)  
 230/117V~ 50/60Hz autoswitch power supply  
 Fins to fasten to a provided 1U 19" rack  
 Dimensions (WxHxD): 439x44x300mm  
 483x44x300mm - 1U 19" rack



## PA AUP240R

Professional power unit, 240W, 8 $\Omega$  and 50/70/100V outputs  
 Inputs for one or more BM101 pre-amplified microphone bases with VOX priority function  
 Additional priority contact command  
 Connectors for Line signal input  
 Input for telephone station call  
 Low and High tone control  
 Master control  
 Constant impedance (8 $\Omega$ ) and constant voltage (50/70/100V) outputs  
 Additional outputs 100V and 24Vdc present only with Paging function  
 PA-HF filter inserted at the rear  
 Ground-lift rear selector  
 230/117Vca 50/60Hz power supply selector  
 24Vdc emergency power supply  
 Dimensions (WxHxD): 483x88x300mm - 19" 2U rack  
 Weight: 13 kg



## PA AUP4125S

4-channel power unit without transformers  
 Power 4x125W. 4/8 $\Omega$  70/100V Outputs  
 4 constant impedance outputs (4 $\Omega$ )  
 4 constant voltage outputs (70/100V) made electronically without the use of output transformers  
 One balanced input for each channel  
 One priority balanced input with independent level control for each channel  
 Independent master control for each channel.  
 Low and High tone control independent over the 4 channels  
 Rear insertion independent PA-HF filter for each channel  
 LED protection indicator  
 LED signal presence indicator  
 LED operating mode indicator (4  $\Omega$ /70V/100V)  
 Switching power supply in SMPS technology (switch mode power supply)  
 Fins to fasten to a provided 19" 2U rack  
 Power Consumption: 1000VA  
 Power supply: 230V~ / 117V~ 50-60Hz  
 Dimensions (WxHxD): 434 x 88.5x425mm – 19" 2U rack  
 Weight: 9.75 kg



## PA AUP4250S

4-channel power unit without transformers.  
 Power 4x250W. 4/8 $\Omega$  70/100V Outputs  
 4 constant impedance outputs (4 $\Omega$ )  
 4 constant voltage outputs (70/100V) made electronically without the use of output transformers  
 One balanced input for each channel  
 One priority balanced input with independent level control for each channel  
 Independent master control for each channel.  
 Low and High tone control independent over the 4 channels  
 Rear insertion independent PA-HF filter for each channel  
 LED protection indicator  
 LED signal presence indicator  
 LED operating mode indicator (4  $\Omega$ /70V/100V)  
 Switching power supply in SMPS technology (switch mode power supply) Fins to fasten to a 19" 2U rack  
 Power Consumption: 2000VA  
 Power supply: 230V~ / 117V~ 50-60 Hz  
 Dimensions (WxHxD): 434x88.5x425mm – 19" 2U rack  
 Weight: 10.35 kg



# AMPLIFIERS



## HPX900

2-Channel stereo amplifier  
Output power (THD<1% 1kHz) 2Ω: 2x 450 W  
Output power (THD<1% 1kHz) 4Ω: 2x 300 W  
Output power (THD<1% 1kHz) 8Ω: 2x200W  
BRIDGE output power 4Ω: 900W  
Power supply 230/117Vac 50/60Hz  
Dimensions (WxHxD): 483x89x335mm - 19" 2U rack  
Weight: 6 kg



## HPX1200

2-Channel stereo amplifier  
Output power (THD<1% 1kHz) 2Ω: 2x 600 W  
Output power (THD<1% 1kHz) 4Ω: 2x 450 W  
Output power (THD<1% 1kHz) 8Ω: 2x300W  
BRIDGE output power 4Ω: 1200W  
Power supply 230/117Vac 50/60Hz  
Dimensions (WxHxD): 483x89x335mm - 19" 2U rack  
Weight: 6.9 kg



## HPX2400

2-Channel stereo amplifier  
Output power (THD<1% 1kHz) 2Ω: 2x 1200 W  
Output power (THD<1% 1kHz) 4Ω: 2x 800 W  
Output power (THD<1% 1kHz) 8Ω: 2x450W  
BRIDGE output power 4Ω: 2400W  
Power supply 230/117Vac 50/60Hz  
Dimensions (WxHxD): 483x89x395mm - 19" 2U rack  
Weight: 9.2 kg



## HPX2800

2-Channel stereo amplifier  
Output power (THD<1% 1kHz) 2Ω: 2x 1400 W  
Output power (THD<1% 1kHz) 4Ω: 2x 1000 W  
Output power (THD<1% 1kHz) 8Ω: 2x600W  
BRIDGE output power 4Ω: 2800W  
Power supply 230/117Vac 50/60Hz  
Dimensions (WxHxD): 483x89x335mm - 19" 2U rack  
Weight: 9.2 kg



## HPX4600

2-Channel stereo amplifier  
Output power (THD<1% 1kHz) 2Ω: 2x 2300 W  
Output power (THD<1% 1kHz) 4Ω: 2x 1400 W  
Output power (THD<1% 1kHz) 8Ω: 2x850W  
BRIDGE output power 4Ω: 4600W  
Power supply 230/117Vac 50/60Hz  
Dimensions (WxHxD): 483x89x505mm - 19" 2U rack  
Weight: 13 kg



## HPX6000

2-Channel stereo amplifier  
Output power (THD<1% 1kHz) 2Ω: 2x 3000 W  
Output power (THD<1% 1kHz) 4Ω: 2x 2000 W  
Output power (THD<1% 1kHz) 8Ω: 2x1200W  
BRIDGE output power 4Ω: 6000W  
Power supply 230/117Vac 50/60Hz  
Dimensions (WxHxD): 483x89x335mm - 19" 2U rack  
Weight: 13.6 kg



## PRE-AMPLIFIERS, MIXER AND PROCESSORS

---

# PRE-AMPLIFIERS AND PROCESSORS



## PA AMIX54Z

Stereo Matrix/Mixer with 5 line/micro inputs with addressable multimedia module (Tuner FM - MP3 reader)  
Five mic/line inputs on balanced COMBO and RCA Stereo  
Independent gain control over input channels 1~5 by means of a rear trimmer  
Phantom +48V that can be deselected for each input  
LED CLIP indicator for each channel input  
INPUT1 priority function over the other inputs that can be disabled  
Dip-switch (INPUT1~5) to assign the input to the outputs  
Independent volume controls (INPUT1~5)  
Four balanced stereo zones/outputs on Euroblock terminals  
Four signal presence indicators on the outputs  
Stereo/Mono selector on each output  
Independent volume controls for the four zone outputs  
MP3 multimedia player with FM radio freely addressable on the output zones  
Ground Lift  
Power supply selector 230/117V~ 50/60Hz  
Dimensions (WxHxD): 483x44.4x200mm - 19" 1U rack  
Weight: 3.4 kg



## PA AMIX63

Analogue mixer to mix microphone/line signals, 6 Micro XLR inputs, 3 RCA Line inputs  
High-quality design and manufacturing accuracy  
Six balanced COMBO mic/line inputs  
Three unbalanced RCA stereo line inputs  
Line/mic with phantom/mic input type selectors  
LED input signal indicators for each channel  
Adjustable MIC 1 priority function on the other inputs  
Independent gain controls for channels 1~9  
Two balanced XLR outputs (Left and Right)  
Balanced mono output  
RCA type stereo REC output (Left and Right)  
LED output signal level indicators (Left and Right)  
MASTER volume control  
Tone controls  
Emergency power terminals (24 V DC)  
Power supply selector 230V~ 50/60Hz  
(AMIX63V117 117V~ 50/60Hz)  
Dimensions (WxHxD): 483x44x195mm 19" 1U rack  
Weight: 2.9 kg



## PA FSHIFTER

Antilarsen processor  
Balanced line input on XLR connector  
Unbalanced line input on RCA connector  
Balanced line output on XLR connector  
Unbalanced line output on RCA connector  
LED indication of operating mode  
Switch power supply 117/230V~ 50/60Hz  
Dimensions (WxHxD): 483x44x195mm - 19" 1U Rack  
Weight: 32 kg





## M822USB

8-Channel MIXER 256 effects

Input connectors:

Mic Input: Balanced XLR-F

Line Input: Balanced JACK

Input sensitivity:

MONO INPUT CHANNEL - Mic Input: from 0 to -60dB

MONO INPUT CHANNEL - Line Input: from +20 to -40dB

STEREO INPUT CHANNEL - Mic Input: -0 / -40dB

STEREO INPUT CHANNEL - Line Input: +20 / -20dB

Input channel equalisation:

HIGH (shelving):  $\pm 15$  dB @ 12kHz

MID (peaking):  $\pm 15$  dB @ 2.5kHz

LOW (shelving):  $\pm 15$  dB @ 80Hz

Power supply: 110-240 VAC ( $\pm 10\%$ ) 50 / 60 Hz

Dimensions (WxHxD): 315x91x363mm

Weight: 3.4 kg



## M1622USB

16-Channel MIXER 256 effects

Input connectors:

Mic Input: Balanced XLR-F

Line Input: Balanced JACK

Input sensitivity:

MONO INPUT CHANNEL - Mic Input: from 0 to -60dB

MONO INPUT CHANNEL - Line Input: from +20 to -40dB

STEREO INPUT CHANNEL - Mic Input: -0 / -40dB

STEREO INPUT CHANNEL - Line Input: +20 / -20dB

Mono input channel equalisation:

HIGH (shelving):  $\pm 15$  dB @ 12kHz

MID (peaking):  $\pm 15$  dB from 100 Hz to 8 kHz

LOW (shelving):  $\pm 15$  dB @ 80Hz

Stereo input channel equalisation:

HIGH (shelving):  $\pm 15$  dB @ 12kHz

HI-MID (peaking):  $\pm 15$  dB @ 3kHz

LO-MID (peaking):  $\pm 15$  dB @ 500Hz

LOW (shelving):  $\pm 15$  dB @ 80Hz

Power supply: 110-240 VAC ( $\pm 10\%$ ) 50 / 60 Hz

Dimensions (WxHxD): 465x91x462mm

Weight: 6.5 kg



## PC260

2 inputs / 6 outputs DIGITAL SIGNAL PROCESSOR (DSP)

40 bit floating point resolution CORE DSP

AD/DA 24bit converter

110 dB dynamic range

5-band Parametric EQ for each input and output, including peaking, shelving, notch, resonating HP and LP, allpass and bandpass

28-band Graphic EQ for each input

3-band Dynamic EQ for each input

Programmable COMPRESSOR/LIMITER for each input-output

600ms delay for each input-output

Dedicated MIC input for RTA

Group function - SPL manager

AES digital input

PRONET compatible through USB port





## AUDIO SOURCES AND RECEIVERS

---



# AUDIO SOURCES AND RECEIVERS



## PA SOURCE

CD-USB/MP3 Reader with AM/FM tuner  
USB port for MP3 file reading on pen drive  
TUNER OUT  
Outputs levels: CD/MP3 OUT: 1.2V  
TUNER OUT: 1.2V  
Controls: CD/MP3 READER CONTROLS  
RADIO TUNER CONTROLS  
Frequency response:  
    CD: 20Hz - 20kHz (-3dB)  
    RADIO: 100Hz - 12kHz (-3dB)  
Signal/Noise ratio: CD: > 75dB  
RADIO: > 65dB  
Power supply: 230V~ 50/60Hz (SOURCEUS 117V~ 50/60Hz)  
Input/Output connectors: CD/MP3 OUT: 1x RCA L/R  
TUNER OUT: 1x RCA L/R  
Dimensions (WxHxD): 482x44x250mm - 19" 1U rack  
Weight: 3.5 kg

## PA ATMP160XL

Combo receiver 160W - 70/100V- 4Ω  
USB/SD MMC, BLUETOOTH integrated multimedia module and  
Digital AM/FM tuner  
Speaker short-circuit and overload protection circuit  
LED power indicator  
LED level indicator  
Master volume control  
Separate level controls for inputs 1÷5  
Low and high tone adjustment  
Lit knobs  
4 MIC/MIC Phantom 24/LINE balanced inputs on Euroblock terminal  
3 AUX switchable inputs from front selector  
1÷4 Inputs with VOX priority function / Contact on other inputs  
(selectable by dip-switch)  
MAIN - IN/OUT function  
3 outputs, one of which at constant 4Ω impedance and two at  
constant voltage (70/100V)  
Independent CHIME function for each input (routing)  
REC OUT output on RCA  
Balanced line level output on Euroblock terminal  
230/117V~ 50/60Hz autoswitch power supply  
Fins to fasten to a provided 19" 2U rack  
Dimensions (WxHxD): 439x88x300mm  
483x88 x300mm - 19" 2U rack



## SOUND SPEAKERS

---

# SOUND SPEAKERS



## PA PR10PL

ABS sound projector  
Loudspeaker: Full range  
Power: 10/5/2.5W @ 100V  
Frequency response: 160Hz-16kHz (-10dB)  
SPL (1W/m): 91dB  
SPL MAX (Pmax @ 1m): 101dB  
Coverage angle 1kHz/4kHz (-6dB): 130°/85°  
Colour: White (RAL 9010)  
Dimensions: Ø138-H190mm  
Weight: 1.9 kg  
U-type bracket included  
Protection rating: IP55



## PA PR10PLB

ABS sound projector  
Loudspeaker: Full range  
Power: 10/5/2.5W @ 100V  
Frequency response: 160Hz-16kHz (-10dB)  
SPL (1W/m): 91dB  
SPL MAX (Pmax @ 1m): 101dB  
Coverage angle 1kHz/4kHz (-6dB): 130°/85°  
Colour: Black  
Dimensions: Ø138-H190mm  
Weight: 1.9 kg  
U-type bracket included  
Protection rating: IP55



## PA PR30PL

ABS waterproof sound projector  
Loudspeaker: 5" Full range  
Power: 30/15/7.5/3.5/1.5W @ 100V 8Ω  
Frequency response: 125Hz-15kHz  
SPL (1W/m): 101dB  
SPL MAX (Pmax @ 1m): 110 dB  
Coverage angle 1kHz/4kHz (-6dB): 130°/90°  
Colour: White  
Dimensions: Ø178-H200mm  
Weight: 2.1 kg  
U-type bracket included  
Protection rating: IP56



## PA HSPL30

Music-type ABS waterproof wide-band Hi-Fi horn  
Loudspeaker: Full range  
Power: 30/15W @ 100V  
Frequency response: 120Hz-15kHz (-10dB)  
SPL (1W/m): 98dB  
SPL MAX (Pmax @ 1m): 113dB  
Coverage angle 1kHz/4kHz (-6dB):  
H: 110°/80°  
V: 90°/80°  
Dimensions (WxHxD): 366x172x272mm  
U type bracket included  
Protection rating: IP56





## PA HSPL40

ABS waterproof 2-way Hi-Fi horn  
 Loudspeaker: W: 6.5" - T: 1"  
 Power: 40/20/10/5W @ 100V  
 Frequency response: 120Hz-15kHz (-10dB)  
 SPL (1W/m): 98 dB  
 SPL MAX (Pmax @ 1m): 114 dB  
 Coverage angle 1kHz/4kHz (-6dB):  
   H: 110°/80°  
   V: 90°/80°  
 White (RAL 9010)  
 Dimensions (WxHxD): 370x255x291mm  
 Weight: 5.6 kg  
 U-type bracket included  
 Protection rating: IP55



## XE65CTX

2-way square wall/ceiling mount speaker in ABS  
 Loudspeaker: W: 6.5" - T: 1"  
 Power: 40/20/5/2W @ 100V/70V  
       45W @ 8Ω  
 Frequency response: 70Hz-20kHz (-10dB)  
 SPL (1W/m): 87dB  
 SPL MAX (Pmax @ 1m): 103dB  
 Coverage angle 1kHz/4kHz (-6dB): 145°/80°  
 Colour: White (RAL 9010)  
 Dimensions (WxHxD): 200x200x77mm  
 Weight: 1.7 kg  
 Assembly: Ceiling/wall recessed  
 Mounting hole (WxH): 176x176mm  
 Available in pairs (single price)



## PA WS04

ABS wall speaker  
 Loudspeaker: 6" Full range  
 Power: 10/5W @ 100V  
 Frequency response: 110Hz-13kHz (-10dB)  
 SPL (1W/m): 91dB  
 SPL MAX (Pmax @ 1m): 101dB  
 Coverage angle 1kHz/4kHz (-6dB): 110°/85°  
 Colour: White (RAL 9010)  
 Dimensions (WxHxD): 240x345x101mm  
 Weight: 1.6 kg  
 Fixing system by screw



## PA COVER6X

Metal box for XE65CTX

# SOUND SPEAKERS



## XE51CT

ABS ceiling recessed speaker  
Loudspeaker: 5" Full range  
Power: 10/5/2.5W @ 100V  
Frequency response: 100Hz-20kHz (-10dB)  
SPL (1W/m): 90dB  
SPL MAX (Pmax @ 1m): 100 dB  
Coverage angle 1kHz/4kHz (-6dB): 130°/100°  
Colour: White (RAL 9010)  
Dimensions (WxHxD): Ø191.5-H78mm  
Weight: 1 kg  
Assembly: ceiling recessed  
Mounting hole: Ø165mm  
Available in pairs (single price)



## PA COVERCS

Metal box for XE51CT



## PA CSE06T

Metal ceiling speaker  
Loudspeaker: 5" Full range  
Power: 6/3W @ 100V  
Frequency response: 110Hz-15kHz (-10dB)  
SPL (1W/m): 90dB  
SPL MAX (Pmax @ 1m): 98dB  
Coverage angle 1kHz/4kHz (-6dB): 150°/95°  
Colour: White (RAL 9010)  
Dimensions: Ø204-H85mm  
Weight: 0.7 kg  
Assembly: ceiling recessed  
Mounting hole: Ø175mm



## XE65CT

ABS 2-way hi-fi ceiling recessed speaker  
Loudspeaker: W: 6.5" - T: 1"  
Power: 20/10/5/2.5W @ 100V  
Frequency response: 70Hz-20kHz (-10dB)  
SPL (1W/m): 87dB  
SPL MAX (Pmax @ 1m): 100 dB  
Coverage angle 1kHz/4kHz (-6dB): 130°/80°  
Colour: White (RAL 9010)  
Dimensions: Ø204-H85mm  
Weight: 1.2 kg  
Assembly: ceiling recessed  
Mounting hole: Ø179mm  
Available in pairs (single price)



## PA CS6TALEN

Steel recessed speaker with anti flame steel cover, ceramic terminal board and thermal fuse  
 Loudspeaker: 6.5" Full range  
 Power: 12/6/3W @ 100V  
 Frequency response: 100Hz-20kHz (-10dB)  
 SPL (1W/m): 90dB  
 SPL MAX (Pmax @ 1m): 100 dB  
 Coverage angle 1kHz/4kHz (-6dB): 150°/95°  
 Colour: White (RAL 9010)  
 Dimensions: Ø220-H150mm  
 Weight: 1.6 kg  
 Assembly: Ceiling recessed  
 Mounting hole: Ø205mm



## X50CTV2

ABS two-way hi-fi ceiling recessed speaker XENIA Series  
 Loudspeaker: W: 5" - T: ½"  
 Power: 10/5/2/1 W @ 100V  
 Frequency response: 70Hz-20kHz (-10dB)  
 SPL (1W/m): 91dB  
 SPL MAX (Pmax @ 1m): 103dB  
 Coverage angle 1kHz/4kHz (-6dB): 150°/95°  
 Colour: White (RAL 9010)  
 Dimensions: Ø190-H80mm  
 Weight: 1.2 kg  
 Ceiling recessed  
 Mounting hole: Ø170mm  
 Available in pairs (single price)  
 Protection rating: IP44



## PA CS20SL

ABS two-way hi-fi ceiling recessed speaker and magnetic metal grid.  
 Loudspeaker: W: 4" - T: ½"  
 Power: 20/10/5W @ 100V  
 Frequency response: 100Hz-20kHz (-10dB)  
 SPL (1W/m): 88dB  
 SPL MAX (Pmax @ 1m): 102dB  
 Coverage angle 1kHz/4kHz (-6dB): 130°/120°  
 Colour: White (RAL 9010)  
 Dimensions: Ø187-H80mm  
 Weight: 1.2kg  
 Recess Hole: Ø160mm



## PA CS30SL

ABS two-way hi-fi ceiling recessed speaker and magnetic metal grid.  
 Loudspeaker: W: 6" - T: ½"  
 Power: 30/15/7.5W @ 100V  
 Frequency response: 90Hz-20kHz (-10dB)  
 SPL (1W/m): 88dB  
 SPL MAX (Pmax @ 1m): 105dB  
 Coverage angle 1kHz/4kHz (-6dB): 130°/120°  
 Colour: White (RAL 9010)  
 Dimensions: Ø235-H90mm  
 Weight: 1.8 kg  
 Recess Hole: Ø200mm



# SOUND SPEAKERS



## PA CS30HFT

ABS recessed Hi-Fi speaker with steel cap  
Loudspeaker: W: 6.5" - T: 0.75"  
Power: 60/30/15W @ 100V  
Frequency response: 100Hz -20kHz (-10dB)  
SPL (1W/m): 88dB  
SPL MAX (Pmax @ 1m): 106dB  
Coverage angle 1kHz/4kHz (-6dB): 160°/90°  
Material: ABS/Metal  
Colour: White (RAL 9010)  
Dimensions: Ø252-H210mm  
Weight: 3.4 kg  
Assembly: ceiling recessed  
Mounting hole: Ø223mm



## PA CO30S5

Aluminium high directivity column speaker  
Loudspeaker: 5x3" ¼  
Power: 7.5/15/30 W - 100V  
Frequency response: 200Hz-19kHz (-10dB)  
SPL (1W/m): 93dB  
SPL MAX (Pmax @ 1m): 108dB  
Coverage angle 1kHz/4kHz (-6dB): V:70°/20° H:160°/120°  
Colour: White  
Dimensions (WxHxD): 91x544x88mm  
Weight: 3.5 kg



## PA CSB10

ABS Ceiling speaker  
Loudspeaker: 5" Full range  
Power: 10/5/2.5W @ 100V-70V  
Frequency response: 110Hz - 15kHz (-10 dB)  
SPL (1W/m): 92dB  
SPL MAX (Pmax @ 1m): 102dB  
Coverage angle 1kHz/4kHz (-6dB): 160°/95°  
Colour: White (RAL 9010)  
Dimensions (WxHxD): Ø184-H162.5mm  
Weight: 1.7 kg  
4.5 metre suspension cable  
Protection rating: IP44



## PA CO60S10

Aluminium high directivity column speaker  
Loudspeaker: 10x3" ¼  
Power: 15/30/60 W @ 100V  
Frequency response: 180Hz-18kHz (-10dB)  
SPL (1W/m): 93dB  
SPL MAX (Pmax @ 1m): 111dB  
Coverage angle 1kHz/4kHz (-6dB): V:40°/20° H:160°/120°  
Colour: White  
Dimensions (WxHxD): 91x94 x88mm  
Weight: 6.2 kg



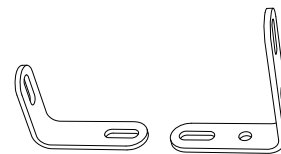
## PA CO120S15

Aluminium high directivity column speaker  
 Loudspeaker: 10x3" 1/4  
 Power: 60/120W  
 @ 100V Frequency response 170Hz-17kHz (-10dB)  
 SPL (1W/m): 94dB  
 SPL MAX (Pmax @ 1m): 115dB  
 Coverage angle 1kHz/4kHz (-6dB): V:30°/20° H:160°/120°  
 Colour: White  
 Dimensions (WxHxD): 91x1339x88mm  
 Weight: 8.9 kg



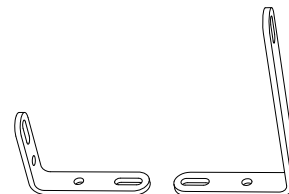
## PA CO4006

Aluminium high directivity column speaker  
 Loudspeaker: W: 6x2" - T: 1"  
 Power: 40/20/10W @ 100V  
 Frequency response: 180Hz-18kHz (-10dB)  
 SPL (1W/m): 91dB  
 SPL MAX (Pmax @ 1m): 107 dB  
 Coverage angle 1kHz/4kHz (-6dB): V:40°/30° H:170°/140°  
 Colour: White  
 Swivel bracket  
 Dimensions (WxHxD): 67x505x65mm  
 Weight: 2.2 kg



## PA SC1

Wall bracket for CO series column speakers



## PA SC2

Wall bracket for CO series column speakers



## PA CO4012

Aluminium high directivity column speaker  
 Loudspeaker: W:12x2" - T: 1"  
 Power: 40/20/10W @ 100V  
 Frequency response: 180Hz-18kHz (-10dB)  
 SPL (1W/m): 93dB  
 SPL MAX (Pmax @ 1m): 109 dB  
 Coverage angle 1kHz/4kHz (-6dB): V:30°/25° H:170°/150°  
 Colour: White  
 Swivel bracket  
 Dimensions (WxHxD): 67x828x65mm  
 Weight: 3.5 kg

# SOUND SPEAKERS



## PA HS15AL

Aluminium horn speaker  
Power: 15/10/5/3/1W @ 100V  
Frequency response: 280Hz-12.5kHz (-10dB)  
SPL (1W/m): 108dB  
SPL MAX (Pmax @ 1m): 120dB  
Coverage angle 1kHz/4kHz (-6dB): 90°/60°  
Colour: Grey  
Dimensions: Ø212.5x229.5mm  
Weight: 1.4 kg  
U-type bracket included  
Protection rating: IP55



## PA HS30AL

Aluminium horn speaker  
Power: 30/15/10/5/3/1W @ 100V  
Frequency response: 250Hz-16kHz (-10dB)  
SPL (1W/m): 109dB  
SPL MAX (Pmax @ 1m): 124dB  
Coverage angle 1kHz/4kHz (-6dB): 90°/60°  
Colour: Grey  
Dimensions: Ø259x261mm  
Weight: 1.8 kg  
U-type bracket included  
Protection rating: IP55



## PA H16R

Long range aluminium round horn, without driver Anti UV treatment  
To be used combined with HD60T driver  
Coverage angle 1kHz/4kHz (-6dB): 80°/65°  
Aluminium body  
Colour: Grey  
Dimensions: Ø407x325mm  
Weight: 1.5 kg  
U-type bracket included  
Protection rating: IP66



## PA HD60T

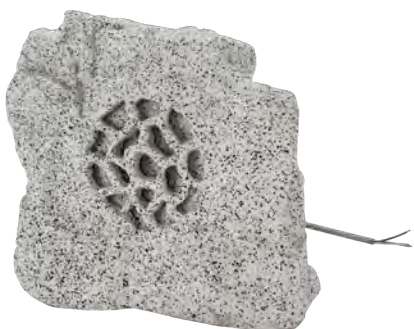
Waterproof driver unit for "H" series horns  
Power: 60/40/20W @ 100V  
Frequency response: 200Hz-6kHz (-10dB)  
SPL (1W/m): 115dB  
SPL MAX (Pmax @ 1m): 133dB  
Colour: Grey  
Weight: 1.4 kg  
Protection rating: IP55





## PA HS30

ABS horn speaker  
 Power: 30/15/10/5/3/1W @ 100V  
 Frequency response: 250Hz-16kHz (-10dB)  
 SPL (1W/m): 109dB  
 SPL MAX (Pmax @ 1m): 124dB  
 Coverage angle 1kHz/4kHz (-6dB): 95°/65°  
 Colour: White (RAL 9010)  
 Dimensions (WxHxD): 287x208x257.5mm  
 Weight: 1.7 kg  
 U-type bracket included  
 Protection rating: IP55



## PA STONE

Stone-shape speaker  
 Loudspeaker: Two-way coaxial W:6.5" - T:1.5"  
 Power: 15/7.5W @ 100V - 7.5/3.8W @ 70V  
 Frequency response: 120Hz -15kHz (-10dB)  
 SPL (1W/m): 95dB  
 SPL MAX (Pmax @ 1m): 108dB  
 Coverage angle 1kHz/4kHz (-6dB): 250°/250°  
 ABS body  
 Colour: Light grey stone  
 Dimensions (WxHxD): 259x265x349mm  
 Weight: 4.3 kg  
 Protection rating: IP 55



## PA FGS20

Hi-Fi garden speaker  
 Loudspeaker: Two-way coaxial  
 Power: 30/15/7.5W @ 100V  
 Frequency response: 80Hz-12kHz (-10dB)  
 SPL (1W/m): 97dB  
 SPL MAX (Pmax @ 1m): 110dB  
 Coverage angle 1kHz/4kHz (-6dB): 360°/360°  
 ABS body  
 Colour: Green  
 Dimensions (WxHxD): 280x400x280mm  
 Weight: 1.8 kg  
 Protection rating: IP55

# SOUND SPEAKERS



## XE35TB

Two-way monitor speaker

Loudspeaker: W: 3.5" T: 1"

Power: 15/7.5/4/2/1W @ 100/70V  
30W @ 8Ω

Frequency response: 70Hz-20kHz (-10dB)

SPL (1W/m): 85 dB

SPL MAX (Pmax @ 1m): 97 dB

Coverage angle 1kHz/4kHz (-6dB): 150°/100°

ABS body

Colour: Black

Dimensions (WxHxD): 130x198x130mm

Weight: 1.8 kg

U-type bracket included

Available in pairs (single price)



## XE55TB

Two-way monitor speaker

Loudspeaker: W: 5" - T: 1"

Power: 30/10/5/2/1W @ 100/70V  
60W @ 8Ω

Frequency response: 70Hz-20kHz (-10dB)

SPL (1W/m): 87dB

SPL MAX (Pmax @ 1m): 101dB

Coverage angle 1kHz/4kHz (-6dB): 140°/90°

ABS body

Colour: Black

Dimensions (WxHxD): 181x240x172mm

Weight: 3 kg

U-type bracket included

Available in pairs (single price)



## XE65TB

Two-way monitor speaker

Loudspeaker: W: 6.5" - T: 1"

Power: 40/20/10/5/2W @ 100/70V  
60W @ 8Ω

Frequency response: 70Hz-20kHz (-10dB)

SPL (1W/m): 87dB

SPL MAX (Pmax @ 1m): 103dB

Coverage angle 1kHz/4kHz (-6dB): 140°/90°

ABS body

Colour: Black

Dimensions (WxHxD): 217x288x204mm

Weight: 4.2 kg

U-type bracket included

Available in pairs (single price)



## PA SNBK

Adjustable wall swivel connection for Monitor line.

Colour Black. Standard package: 2pcs



## XE35TW

Two-way monitor speaker

Loudspeaker: W: 3.5" - T: 1"

Power: 15/7.5/4/2/1W @ 100/70V  
30W @ 8Ω

Frequency response: 70Hz-20kHz (-10dB)

SPL (1W/m): 85dB

SPL MAX (Pmax @ 1m): 97 dB

Coverage angle 1kHz/4kHz (-6dB): 150°/100°

ABS body

Colour: White

Dimensions (WxHxD): 130x198x130mm

Weight: 1.8 kg

U-type bracket included

Available in pairs (single price)



## XE55TW

Two-way monitor speaker

Loudspeaker: W: 5" - T: 1"

Power: 30/10/5/2/1W @ 100/70V  
60W @ 8Ω

Frequency response: 70Hz-20kHz (-10dB)

SPL (1W/m): 87dB

SPL MAX (Pmax @ 1m): 101dB

Coverage angle 1kHz/4kHz (-6dB): 140°/90°

ABS body

Colour: White

Dimensions (WxHxD): 181x240x172mm

Weight: 3 kg

U-type bracket included

Available in pairs (single price)



## XE65TW

Two-way monitor speaker

Loudspeaker: W: 6.5" - T: 1"

Power: 40/20/10/5/2W @ 100/70V  
60W @ 8Ω

Frequency response: 70Hz-20kHz (-10dB)

SPL (1W/m): 87dB

SPL MAX (Pmax @ 1m): 103dB

Coverage angle 1kHz/4kHz (-6dB): 140°/90°

ABS body

Colour: White

Dimensions (WxHxD): 217x288x204mm

Weight: 4.2 kg

U-type bracket included

Available in pairs (single price)



## PA SNWH

Adjustable wall swivel connection for Monitor line.

Colour White. Standard package: 2pcs



# SOUND SPEAKERS



## X30TB

Two-way XENIA series speaker  
Loudspeaker W: 3" - T: 1" (neodymium soft dome horn loaded tweeter)  
Power: 30/15/8W @ 100/70V  
30W @ 8Ω  
Frequency response: 100-20kHz (-10dB)  
SPL (1W/m @ 1 kHz): 87dB  
SPL MAX (Pmax @ 1m):-  
Coverage angle 1kHz/4kHz (-6dB): 150°/100°  
ABS body  
Colour: Black  
Dimensions (WxHxD): 125x193x120mm  
Weight: 1.3 kg  
Adjustable bracket included  
Protection rating: IP55  
Available in pairs (single price)



## X50TB

Two-way (1") tweeter XENIA series speaker  
Loudspeaker W: 5" - T: 1" (neodymium soft dome horn loaded tweeter)  
Power: 50/25/12W @ 100/70V  
50W @ 8Ω  
Frequency response: 100-20kHz (-10dB)  
SPL (1W/m @ 1 kHz): 90dB  
SPL MAX (Pmax @ 1m):-  
Coverage angle 1kHz/4kHz (-6dB): 140°/90°  
ABS body  
Colour: Black  
Dimensions (WxHxD): 170x280x175mm  
Weight: 2.3 kg  
Adjustable bracket included  
Protection rating: IP55  
Available in pairs (single price)



## X30TW

Two-way XENIA series speaker  
Loudspeaker W: 3" - T: 1" (neodymium soft dome horn loaded tweeter)  
Power: 30/15/8W @ 100/70V  
30W @ 8Ω  
Frequency response: 100-20kHz (-10dB)  
SPL (1W/m @ 1 kHz): 87dB  
SPL MAX (Pmax @ 1m)  
Coverage angle 1kHz/4kHz (-6dB): 150°/100°  
ABS body  
Colour: Black  
Dimensions (WxHxD): 125x193x120mm  
Weight: 1.3 kg  
Adjustable bracket included  
Protection rating: IP55  
Available in pairs (single price)



## X50TW

Two-way (1") tweeter XENIA series speaker  
Loudspeaker W: 5" - T: 1" (neodymium soft dome horn loaded tweeter)  
Power: 50/25/12W @ 100/70V  
50W @ 8Ω  
Frequency response: 100-20kHz (-10dB)  
SPL (1W/m @ 1 kHz): 90dB  
SPL MAX (Pmax @ 1m)  
Coverage angle 1kHz/4kHz (-6dB): 140°/90°  
ABS body  
Colour: White  
Dimensions (WxHxD): 170x28 x175mm  
Weight: 2.3 kg  
Adjustable bracket included  
Protection rating: IP55  
Available in pairs (single price)



## PROFESSIONAL SOUND SPEAKERS

---

# PROFESSIONAL SOUND SPEAKERS



## FLASH5PV2

Passive 5" FLASH series speaker 16Ω  
2-way system with soft dome tweeter and 5" woofer  
Coverage angle: 90°H x 60°V  
Impedance: 16Ω  
Power Rating (continuous): 80W  
Power Rating (peak): 160W  
Frequency response: 80Hz-20kHz  
SPL (1W/m): 91dB  
Weight: 2.5kg  
Flying System: 3 x M6 - top/bottom  
Material: Polypropylene body  
Colour: Black  
Dimensions (WxHxD): 175x265x176.5mm



## FLASH5PWV2

Passive 5" FLASH series speaker 16Ω  
2-way system with soft dome tweeter and 5" woofer  
Coverage angle: 90°H x 60°V  
Impedance: 16Ω  
Power Rating (continuous): 80W  
Power Rating (peak): 160W  
Frequency response: 80Hz-20kHz  
SPL (1W/m): 91dB  
Weight: 2.5kg  
Flying System: 3 x M6 - top/bottom  
Material: Polypropylene body  
Colour: White  
Dimensions (WxHxD): 175x265x176.5mm



## FLASH8XP

Passive 8" FLASH series speaker 8Ω  
2-way system with 1.5" driver and 8" woofer  
Coverage angle: 90°H x 60°V  
Impedance: 8Ω  
Power Rating (continuous): 150W  
Power Rating (peak): 300W  
Frequency response: 70Hz-20kHz  
SPL (1W/m): 96dB  
Weight: 8.5 kg  
Material: Polypropylene body  
Colour: Black  
Assembly: optional bracket or stand  
Dimensions (WxHxD): 270x422x260mm



## FLASH12XP

Passive 8" FLASH series speaker 8Ω  
2-way system with 2.5" driver and 12" woofer  
Coverage angle: 90°H x 60°V  
Impedance: 8Ω  
Power Rating (continuous): 300W  
Power Rating (program): 600W  
Frequency response: 70Hz-20kHz  
SPL (1W/m): 99dB  
Weight: 18.5 kg  
Material: Polypropylene body  
Colour: Black  
Assembly: optional bracket or stand  
Dimensions (WxHxD): 390x623x350mm





## SPSK105BKF5

Black anodised aluminium support. To be used with FLASH5, FREE1, CO30S5 and CO60S10



## KP210

Steel adjustable case-subwoofer spacer support with Ø35mm terminals



## FRE300BK

Professional aluminium speaker stand



## AC169

Black galvanised M10 eyebolt



## KPTNX03

Adjustable metal bracket for wall mounting, 50cm long bar, 4 steps at 12.5° in vertical and 7 steps at 10° in horizontal, must be used with KPTFL accessory.



## KPTNX04

Adjustable metal bracket for wall mounting, 25cm long bar, 4 steps at 12.5° in vertical and 7 steps at 10° in horizontal, must be used with KPTFL accessory. Universal wall bracket for FLASH5 - FLASH8 - FLASH12 - FLASH15

# PROFESSIONAL SOUND SPEAKERS



## KP560

Sturdy tubular steel wall support for loudspeakers. The directional mounting bracket allows both horizontal and vertical adjustment.

Height: 250mm

Depth: 390mm

Weight: 2.2 kg

Loading capacity: 35 kg

Colour: Black



## KP565

Sturdy tubular steel wall support for loudspeakers. The directional mounting bracket allows both horizontal and vertical adjustment.

Height: 250mm

Depth: 280mm

Weight: 2.1 kg

Loading capacity: 35 kg

Colour: Black



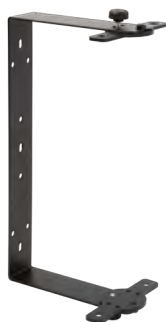
## KPTFL5W

White FLASH5 wall bracket



## KPTFL5

Black FLASH5 wall bracket



## KPTFL12

FLASH12 wall bracket



## KPTFL8

FLASH8 wall bracket



## SW110AV2

SubWoofers Active 10" - 250W  
 System type Bandpass enclosure subwoofer  
 Loudspeaker: Woofer 10" con 2x2.5"VC  
 Continuous power: 250W  
 Frequency response: 46Hz-160Hz  
 SPL (1W/m): 116dB  
 Connectors:  
     IN: 2 x NEUTRIK COMBO  
     OUT: 2 x NEUTRIK XLR-M  
     LINK: 2 x NEUTRIK XLR-M  
 Controls: Volume, GND lift, X-over Frequency, Phase Power supply:  
 230 V~ or 120 V~ 50/60 Hz  
 Weight: 14kg  
 Cabinet: 15/18mm multilayer  
 Black anti-scratch paint  
 1 x handle  
 1 x pole support  
 Dimensions (WxHxD): 520x330x350mm



## SW110PV2

SubWoofers Passivo 10" 150+150W  
 Altoparlante: Woofer 10"  
 Impedenza: 8+8Ω  
 Power Handling (continuous): 150+150W  
 Power Handling (peak): 300+300W  
 Risposta in frequenza: 46Hz-160Hz  
 SPL (1W/m): 90dB @ 1 W/1m  
 Peso: 29kg  
 Cabinet: multistrato 15/18mm  
 Dimensioni (LxHxP): 520x330x350mm



## SW115AV2

Active SubWoofers: 15" - 350W  
 System type: BPS enclosure subwoofer  
 Loudspeaker: 15" woofer with 3"VC  
 Amplifier Continuous Power 350 W  
 Frequency Response: 40 Hz - 160 Hz  
 Max SPL: 126 dB  
 Connectors: IN: 2 x NEUTRIK COMBO  
     OUT/LINK: 2 x JACK 1/4", 2 x XLR-M  
 Controls: Volume, Stereo/Mono, Flat Out  
     GND lift, X-over frequency, Phase  
 Power Supply: 230 VAC or 120 VAC 50/60 Hz  
 Weight: 27.5 kg  
 Cabinet: 15/18 mm plywood  
     Black anti-scratch paint  
     1.5 mm metal grille  
     2 x steel handles  
     1 x pole holder  
     4 x 75 mm wheels  
 Dimensions: (W x H x D): 430 x 550 x 600mm



## SW118P

SubWoofers Passivo 18"500W  
 Loudspeaker: Woofer 15"  
 Impedance: 8Ω  
 Power Handling (continuous): 500W  
 Power Handling (peak): 1000W  
 Frequency response: 36Hz-170Hz (without filter)  
 SPL (1W/m): 98dB  
 Weight: 47kg  
 Cabinet: 15/18mm multilayer  
 Dimensions (WxHxD): 520x660x640mm



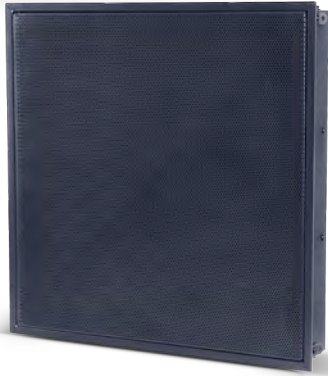






## LNE SYSTEMS

# LNE SYSTEMS



## SC965P

LNE SYSTEM Low Noise Emission  
System: full-range ceiling loudspeaker matrix element  
Frequency response: 80Hz-16kHz  
SPL MAX (Pmax @ 1m): 120dB  
Components: 9x 6.5" full range  
Impedance: 36Ω  
SPL (1W/m): 88.3dB  
Power handling (AES): 400W  
Power handling (programme): 800W  
H and V Coverage variable by number of elements used  
Weight: 16 kg  
Dimensions (WxHxD): 600x600x160mm



## DS112P

LNE SYSTEM Low Noise Emission  
Two-way high directivity System MTM circular configuration  
Input power rating (continuous): 300W (8Ω)  
Input power rating (peak): 600W (8Ω)  
Impedance: 8Ω  
Frequency response: 110Hz-16kHz (-3dB), 80Hz-18kHz (-10dB)  
SPL MAX (Pmax @ 1m): 124dB  
Low frequencies: 12 x 3.5"  
High frequencies: 1 x 1" compression driver  
Coverage angle: <78°  
Colour: Standard RAL 9007  
Colour Custom: (RAL CODE) Minimum 20 pcs  
Weight: 9 kg  
Dimensions: Ø510-H208mm  
Protection rating: IP55



## DS112PT

LNE SYSTEM Low Noise Emission  
Two-way high directivity System MTM circular configuration  
Input power rating (continuous): 300W (8Ω)  
Input power rating (peak): 600W (8Ω)  
Power Taps to 100V: 25/50/100W  
Impedance: 8Ω  
Frequency response: 110Hz-16kHz (-3dB), 80Hz-18kHz (-10dB)  
SPL MAX (Pmax @ 1m): 124dB  
Low frequencies: 12 x 3.5"  
High frequencies: 1 x 1" compression driver  
Coverage angle: <78°  
Colour: Standard RAL 9007  
Colour Custom: (RAL CODE) Minimum 20 pcs  
Weight: 9 kg  
Dimensions: Ø510-H208mm  
Protection rating: IP55



## DS110SP

LNE SYSTEM Low Noise Emission  
Subwoofer  
Input power rating (continuous): 400W (8Ω)  
Input power rating (peak): 800W (8Ω)  
Impedance: 4Ω  
Frequency response: 30Hz-250Hz  
SPL MAX (Pmax @ 1m): 127dB  
Low Frequency Device: 10" woofer  
Colore : Standard RAL 9007  
Colour Custom: (RAL CODE) Minimum 20 pcs  
Dimensions: Ø510-H208mm  
Protection rating: IP55





## MICROPHONES

---

# MICROPHONES



## PA BM101

General announcement active call station with automatic compressor, dynamic microphone, programmable talk button (PTT or ON/OFF), level output adjustment trimmer, chime level trimmer, selectable 2 or 3 tone chime and smart priority management. Power supply from RJ45 cable or 24Vdc local adaptor.



## PA BM102

General announcement call station with dynamic microphone, Push to talk button and priority output contact (Normally Open).



## PA BMG2

Table microphone base, with gooseneck microphone with light ring

Sensitivity:  $-40\text{dB} \pm 2\text{dB} / 100\Omega \pm 30\%$

Frequency response: 40Hz-20kHz (-3dB)

Power supply: Phantom 48Vdc Batteries 3V (2x AA)

Gooseneck length: 445 mm

Switch: ON-OFF

Connector: XLR

Dimensions (WxHxD): 115x140x30mm

Weight: 0.7 kg



## PA MG400

One-way electret gooseneck microphone  
Sensitivity: 7mV/Pa  
Impedance: 200Ω balanced  
Frequency response: 150Hz-18kHz (-3dB)  
Phantom power supply: 12-52Vdc  
Gooseneck length: 400mm  
Connector: XLR  
Dimensions: H400mm



## PA MG500

One-way, electret gooseneck microphone  
Sensitivity: 7mV/Pa  
Impedance: 200Ω balanced  
Frequency response: 150Hz-18kHz (-3dB)  
Phantom power supply: 12-52Vdc  
Gooseneck length: 500mm  
Connector: XLR  
Dimensions: H500mm



## PA BM103T

Microphone base for gooseneck MG300/400/500,  
connectors XLR-3P. BISTABLE ON/OFF KEY



## PA BMS4

Metal base, table mounting by screws, XLR connector



# MICROPHONES



## DM580LC

Hand-held dynamic microphone  
Dynamic capsule  
Cardioid type polar response  
Suitable for vocal applications  
Metal heavy duty construction  
ON/OFF switch for on-stage control  
Metal grid with foam internal filter for reducing wind noise  
5 metre XLR cable included  
Frequency response (  $\pm 3\text{dB}$  ): 70Hz - 14kHz  
Sensitivity 1 kHz: -55dB  $\pm 3\text{dB}$   
Impedance: 600 $\Omega$   
Weight: 0.275Kg  
Dimensions:  $\varnothing 50$ -L195mm



## OST110BK

Heavy cast iron triangular table base with telescopic rod  
Base dimensions:  $\varnothing 300\text{mm}$   
Minimum height: 950mm  
Maximum height: 1650mm  
Weight: 5.1 kg  
Colour: Matte black



## PA MIC62W

Boundary condenser microphone  
table or wall low profile  
Condenser capsule  
One-way  
Frequency response: 60Hz-16kHz  
Sensitivity: -36 $\pm 3\text{dB}$  @ 1kHz  
Impedance: 200 $\Omega \pm 30\%$  - @1kHz  
Voltage: 9V~52Vdc  
Cable length: 4.56m  
Weight: 0.250Kg (without cable)  
Dimensions (WxHxD): 75x20x100mm  
Colour: White



## RSM200BK

Telescopic giraffe rod for microphones  
Base dimensions:  $\varnothing 700\text{mm}$   
Minimum height: 950mm  
Maximum height: 1600mm  
Weight: 2.7 kg  
Colour: Matte black  
Telescopic giraffe: 565/860mm



## DST110BK

Heavy duty cast-iron triangular table base with telescopic rod  
 Base dimensions: 160x180mm  
 Minimum height: 400mm  
 Maximum height: 560mm  
 Weight: 3.06 kg  
 Rod length: 330/490mm  
 Colour: Matte black base with black tube



## APM50BK

Metal gooseneck with 3/8" - 5/8" male/female thread  
 Dimensions: Ø15-L300mm



## APM20

Special ABS stand for microphone (ØMin-Max: 22-26mm)



## APM30

ABS microphone clip holder (Ø Min-Max: 20-32mm)



## DST100

Heavy duty cast-iron triangular table base  
 Base dimensions: 180x185mm  
 Height: 45mm  
 Weight: 2.5 kg colour: Matte black



## APM60BK

Metal gooseneck with 3/8" - 5/8" male/female thread  
 Dimensions: Ø15-L500mm



## APM40

5/8"-3/8" universal adapter for microphone stands



## APM35B

Large ABS stand for microphone (ØMin-Max: 30-35mm)

# MICROPHONES



## WM202M

Handheld fixed frequency wireless microphone system UHF Band:  
863 - 865 Mhz

Maximum operating distance: up to 30 metres

Frequency response: 50Hz-15kHz

Noise signal ratio: -105dB

Capsule: Cardioid dynamic capsule

Low-profile desktop receiver with two foldable antennas

Up to 3 systems usable in the same location on different frequencies, the simultaneous use depends on the possible interferences caused by other transmitters

ABS carrying and storage case



## WM202H

Headset fixed frequency wireless microphone

Band: 863 - 865 Mhz

Maximum operating distance: up to 30 metres

Frequency response: 50Hz-15kHz

Noise signal ratio: -105dB

Cardioid type condenser headset

Low-profile desktop receiver with two foldable antennas

Up to 3 systems usable in the same location on different frequencies, the simultaneous use depends on the possible interferences caused by other transmitters

ABS carrying and storage case



## WM202KIT

Fixed frequency wireless system with hand-held microphone + headset

Band: 863-865 Mhz

Maximum operating distance: up to 30 metres

Frequency response: 50Hz-15kHz

Noise signal ratio: -105dB

Cardioid type of dynamic capsule

Cardioid type condenser headset

Low-profile desktop receiver with two foldable antennas

Up to 3 systems usable in the same location on different frequencies, the simultaneous use depends on the possible interferences caused

by other transmitters

ABS carrying and storage case





## RMW1000M

Diversity Wireless Microphone Receiver kit LCD Display  
PLL UHF True Diversity reception  
638÷662MHz band  
PLL hand-held transmitter  
Frequency response 50Hz-15kHz  
-105dB signal / noise ratio  
99 channels  
Automatic channel scan  
IR sync  
ABS carrying and storage case



## RMW1000H

BodyPack Wireless Microphone Receiver Kit LCD Display  
PLL UHF True Diversity technology reception  
638÷662MHz band  
PLL BodyPack transmitter  
Frequency response 50Hz-15kHz  
-105dB signal/noise ratio  
99 channels  
Automatic channel scan  
IR sync  
ABS carrying and storage case



## HCM10V2

Condenser headset microphone with back-electret capsule  
Cardioid polar pattern Professional performance for singers and presenters The beige colour makes it particularly suitable in situations where microphone visibility must be minimised without sacrificing quality 3 Adapters included for use with leading brands of wireless microphones (mini XLR 4-pin, mini JACK 3.5mm, mini XLR 3-pin)



## LCH200

Lavalier microphone for RMW microphone  
5 mm condenser capsule Omni-directional polar pattern Tie-clip connection Anti-pop screen Extremely reduced dimensions Usable with mini connection wireless systems  
XLR 4 poles (RMW)

# MICROPHONES



## PA RKBKIT

19" Rack mounting brackets for PLL Receiver on 1 Rack Unit



## PA RKB2KIT

19" Rack mounting brackets for 2 PLL Receiver on 1 Rack Unit



## PA UHFSPLITAL

Active UHF antenna active distributor  
Working frequency: 600-740MHz  
Power Supply: 110-230V~ 50/60Hz - 12Vdc adapter  
Dimensions (WxHxD): 482x44x200mm  
Weight: 1.7 kg



## ANT700

Directional UHF antenna 630 -700MHz



## RACK AND ACCESSORIES

---



# RACK AND ACCESSORIES



## STUDIORKXL08

19" Standard 8 Unit professional Rack container, matt black painted steel, 4 castors  
Dimensions (WxHxD): 560x467x580mm  
Weight: 17,9 Kg



## PXCOVER08N

Plexiglass door for 8-unit STUDIORKXL



## STUDIORKXL12

19" Standard 12 Unit professional Rack container, matt black painted steel, 4 castors  
Dimensions (WxHxD): 560x646x580mm  
Peso: 21,7 Kg



## PXCOVER12N

Plexiglass door for 12-unit STUDIORKXL



## STUDIORKXL36

19" Standard 36 Unit professional Rack container, matt black painted steel, 4 castors  
Dimensions (WxHxD): 560x1718x580mm  
Peso: 39 Kg



## PXCOVER36N

Plexiglass door for 36-unit STUDIORKXL



## PA STF1

Bracket for heavy apparatus racks using purposes (AUP120/240/480/AUP4125/4250s etc.). Suitable for STUDIORKXL series rack



## FSR2260

19" Standard 22 Unit professional Rack container, matt black painted steel, with openable door, sides and back, 4 castors. Top with fan unit with thermostat. Dimensions (WxHxD): 600x1093x600mm



## FSR2760

19" Standard 27 Unit professional Rack container, matt black painted steel, with openable door, sides and back, 4 castors. Top with fan unit with thermostat. Dimensions (WxHxD): 600x1313x600mm



## FSR3260

19" Standard 32 Unit professional Rack container, matt black painted steel, with openable door, sides and back, 4 castors. Top with fan unit with thermostat. Dimensions (WxHxD): 600x1533x600mm



## FSR3760

19" Standard 37 Unit professional Rack container, matt black painted steel, with openable door, sides and back, 4 castors. Top with fan unit with thermostat. Dimensions (WxHxD): 600x1753x600mm



## FSR4260

19" Standard 42 Unit professional Rack container, matt black painted steel, with openable door, sides and back, 4 castors. Top with fan unit with thermostat. Dimensions (WxHxD): 600x2000x600mm



## FSRSHELF02

19" rack metal sliding shelf to be used on the new FSR rack cabinets only Matt black finish

# RACK AND ACCESSORIES



## PA ACC

50A Circuit breaker main switch 19" Rack panel with 6 VDE sockets.  
1 Modular unit height.



## SDC150

19" 2U rack sheet metal reversible box wired with 8 European  
Standard sockets 16A/ 250V



## RK3L

3-unit 19" rack blank panel



## RK4L

4-unit 19" rack blank panel



## RK1L

1-unit 19" rack blank panel



## RK2L

2-unit 19" rack blank panel



## RK1NV

19" 1 rack unit ventilation panel



## RK2NV

19" 2 rack unit ventilation panel





## RK4N

19" 1U Rack Panel  
4 Plug mounting holes for XLR/SPEAKON panel



## RK6N

19" 1U Rack Panel  
6 Plug mounting holes for XLR/RCA/SPEAKON panel



## RK8N

19" 1U Rack Panel  
8 Plug mounting holes for XLR/RCA/SPEAKON panel



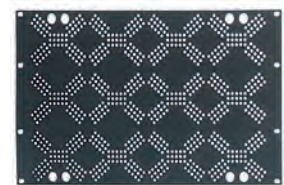
## RK12N

19" 1U Rack Panel  
12 Plug mounting holes for XLR/RCA/SPEAKON panel



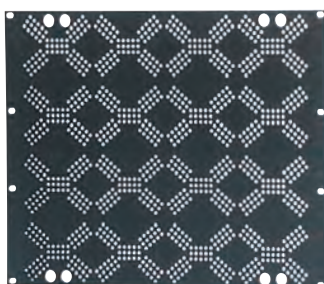
## RK2VP

2-unit back protection Rack panel



## RK6VP

6-unit back protection Rack panel



## RK8VP

8-unit back protection Rack panel

# RACK AND ACCESSORIES



## ADRK2AZ

---

19" 2U rack assembly shelf/adaptor



## ADRK3AZ

---

19" 3U rack assembly shelf/adaptor



## ADRK3CR

---

Lockable 19" 3U rack metal drawer



## ADRK4CR

---

Lockable 19" 4U rack metal drawer



## VOLUME CONTROLS

---



# VOLUME CONTROLS



## PA TRV12A

Recessed volume attenuator for 100V lines. 12W transformer on European square box. With 24Vdc bypass relay.



## PA TRV50A

Recessed volume attenuator for 100V lines. 50W transformer on European square box. With 24Vdc bypass relay.



## PA TRV6B

Recessed volume attenuator for 100V lines. 6W transformer on 503 box. With 24Vdc bypass relay.



## PA TRV30B

Recessed volume attenuator for 100V lines. 30W transformer on 503 box. With 24Vdc bypass relay.



## PA TRV60B

Recessed volume attenuator for 100V lines. 60W transformer on 503 box. With 24Vdc bypass relay.



## PA TRV120B

Recessed volume attenuator for 100V lines. 120W transformer on 503 box. With 24Vdc bypass relay.



## PA TR50ST

Stereo volume attenuator for 4/8/16 $\Omega$  speakers, 12 positions, 2x50W maximum power handling, dedicated box for flush mounting.



## LINE TRANSFORMERS

# LINE TRANSFORMERS



## PA TR24

Audio transformer: 100V-24/12/6/3/1.5W  
Primary impedance: 416-816-1660-3300-6600Ω  
Secondary impedance: 8-4Ω



## PA TR40

Audio transformer: 100V-40/20/10/5/2.5W  
Primary impedance: 250-490-1000-2000-4000Ω  
Secondary impedance: 8-4Ω



## PA TR100

100/70V-100W audio transformer  
Secondary impedance: 16-8-4Ω



## PA MATCHBOX

Universal audio adapter and decoupler with isolation transformer.  
LINE/LINE - 100V/LINE





## CABLES AND CONNECTORS

---

# CABLES AND CONNECTORS



## HPC90

Balanced coaxial cable for installation with flexible overall jacket - O.F.C. (Oxygen Free Copper).  
Price per metre can be ordered on 100m reels



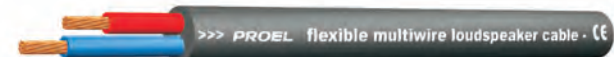
## HPC210BK

"High-quality" balanced microphone cable with flexible overall jacket - O.F.C. (Oxygen Free Copper). Outer diameter 6,5 mm Price per metre can be ordered on 100m reels



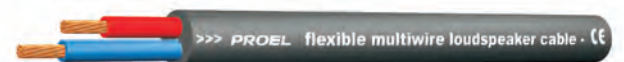
## HPC210FR

Balanced microphone cable with flexible flame resistant overall jacket - O.F.C. (Oxygen Free Copper).  
Outer diameter 5,6 mm  
Price per metre can be ordered on 100m reels



## HPC610BK

Flexible 2 twisted conductors (2 x 1,5 mm<sup>2</sup>) speaker cable, small external diameter.  
Price per metre can be ordered on 100m reels



## HPC620BK

Flexible 2 twisted conductors (2 x 2,5 mm<sup>2</sup>) speaker cable, small external diameter.  
Price per metre can be ordered on 100m reels

## LAN5S

New professional CAT. 5e S-FTP cable for Ethernet connections, featuring unique inner filler to maintain electrical characteristics in portable applications; double shielding manufactured from aluminum-mylar foil and tinned copper braid. Particularly suitable for mobile applications. The outer sleeve is manufactured from polyurethane compound.



## HPC813

Single-shielded antenna cable.  
Price per metre can be ordered on 100m reels



## BULK250LU5

Standard XLR plug/socket professional cable  
Length: 5m



## BULK250LU10

Standard XLR plug/socket professional cable  
Length: 10m



## BULK250LU15

Standard XLR plug/socket professional cable  
Length: 15m



## BULK210LU2

Professional cable with XLR socket/6,3 mm stereo jack connectors  
Length: 2m



## CHLP250LU15

Stereo adapter cable with 2 RCA plugs/2 RCA plugs  
Length: 1,5 mm



## CHLP260LU15

Adapter cable with RCA plug/XLR plug  
Length: 1,5 mm



## CHLP270LU15

Adapter cable with RCA plug/XLR socket  
Length: 1,5 mm



# CABLES AND CONNECTORS



## XLR3FVPRO

Professional 3-pole XLR cable mount female socket, nickel plated die cast aluminium shell and nickel plated aluminium coupling ring



## XLR3MVPRO

Professional 3-pole XLR cable mount male plug, nickel plated die cast aluminium shell and nickel plated aluminium coupling ring



## XLR5FVPRO

5-pole XLR cable mount female socket, nickel plated



## XLR5MVPRO

5-pole XLR cable mount male plug, nickel plated



## MRCA25BK

RCA cable mount male plug with gold plated contacts, black aluminium shell and Ø 6.2 mm flexible cable spring



## AT290

Professional metal adapter: 3-pole XLR female socket -> Ø 6.3 mm. mono jack male plug



## AT510

Professional metal adapter: 3-pole XLR female socket -> RCA male plug



## S5CPRO

Ø6.3mm Stereo jack, nickel plated brass shell and flexible cable spring



## NL4FC

Neutrik, Professional "SPEAKON" 4-pole female cable mount connector with cable strain relief for Ø4-7mm cable - 30A continuous by contact



## NL2FX

Neutrik, Professional "SPEAKON" 2-pole female cable mount connector with cable strain relief for Ø4-7mm cable - 30A continuous by contact



## NL2MP

Neutrik 'SPEAKON' panel mount male receptacle with small square flange, air tight. 2 poles



## NL4MP

Neutrik 'SPEAKON' panel mount male receptacle with small square flange, air tight. 4 poles



## FRCA20RD

RCA panel socket. Colour Red



## FRCA20WH

RCA panel socket. Colour White



## XLR3MDL

3-pole XLR panel mount solder aluminium male receptacle



## XLR3FDL

3-pole XLR panel mount solder aluminium female receptacle with latch  
Colour: Nickel



## XLR5MDL

5-pole XLR panel mount solder aluminium male receptacle



## XLR5FDL

5-pole XLR panel mount solder aluminium female receptacle with latch  
Colour: Nickel



## NE8FDV

Neutrik RJ45 panel mount female receptacle

# ALPHABETICAL INDEX

CODE	PAGE
AC169	55
ADRK2AZ	74
ADRK3AZ	74
ADRK3CR	74
ADRK4CR	74
AE300	6
AE604	6
ANT700	68
APM20	65
APM30	65
APM35B	65
APM40	65
APM50BK	65
APM60BK	65
AT290	82
AT510	82
BULK210LU2	81
BULK250LU10	81
BULK250LU15	81
BULK250LU5	81
CHLP250LU15	81
CHLP260LU15	81
CHLP270LU15	81
DM580LC	64
DS110SP	60
DS112P	60
DS112PT	60
DST100	65
DST110BK	65
FLASH12XP	54
FLASH5PV2	54
FLASH5PWV2	54
FLASH8XP	54
FRCA20RD	83
FRCA20WH	83
FRE300BK	55

CODE	PAGE
FREE10LT	28
FSR2260	71
FSR2760	71
FSR3260	71
FSR3760	71
FSR4260	71
FSRSHELF02	71
HCM10V2	67
HPC210BK	80
HPC210FR	80
HPC610BK	80
HPC620BK	80
HPC813	80
HPC90	80
HPX1200	34
HPX2400	34
HPX2800	34
HPX4600	34
HPX6000	34
HPX900	34
KP210	55
KP560	56
KP565	56
KPTFL12	56
KPTFL5	56
KPTFL5W	56
KPTFL8	56
KPTNX03	55
KPTNX04	55
LAN5S	80
LCH200	67
M1622USB	37
M822USB	37
MRCA25BK	82
NE8FDV	83
NL2FX	82

CODE	PAGE
NL2MP	83
NL4FC	82
NL4MP	83
OST110BK	64
PA 24VDC12A	10
PA 24VDC6A	10
PA ACC	72
PA AMIX54Z	36
PA AMIX63	36
PA AMP03	32
PA AMP03VR	32
PA AMP160XL	32
PA AMP240V4	32
PA ATMP160XL	40
PA AUP160D	33
PA AUP240R	33
PA AUP4125S	33
PA AUP4250S	33
PA BM01	19
PA BM04	19
PA BM08	19
PA BM101	62
PA BM102	62
PA BM103T	63
PA BM16	19
PA BM8X8	17
PA BMCD	25
PA BMDD	25
PA BMG2	62
PA BMS4	63
PA C0120S15	47
PA C030S5	46
PA C04006	47
PA C04012	47
PA C060S10	46
PA CONFD	25



CODE	PAGE
PA COVER6X	43
PA COVERCS	44
PA CS 56EN	12
PA CS 66EN	12
PA CS20SL	45
PA CS30HFT	46
PA CS30SL	45
PA CS6TALEN	45
PA CSB10	46
PA CSE06T	44
PA CVMF13	26
PA CVMF3	26
PA CVMF6	26
PA CVMM3	26
PA DBE01	7
PA DBE06	7
PA DBE108	7
PA DBE108E	7
PA DBEVF	7
PA DWSKIT	25
PA EV MCL1Z	8
PA EV MCL2Z	8
PA EV PROM5Z	8
PA EV PROS8Z	8
PA EXBM8X8	17
PA EXCONFD	26
PA FGS20	49
PA FREE1	28
PA FSHIFTER	36
PA H16R	48
PA HD60T	48
PA HS 30EN	14
PA HS15AL	48
PA HS30	49
PA HS30AL	48
PA HSPL30	42

CODE	PAGE
PA HSPL40	43
PA INCOM	22
PA KITEVAC	14
PA LOC02	16
PA MATCHBOX	78
PA MATRIX88	16
PA MDA250	9
PA MDA500	9
PA MDAC8	9
PA MEG25	29
PA MG400	63
PA MG500	63
PA MIC62W	64
PA MO 30BEN	13
PA MO 30WEN	13
PA PR 520BEN	13
PA PR 520EN	13
PA PR 620EN	14
PA PR10PL	42
PA PR10PLB	42
PA PR30PL	42
PA PROX	29
PA PROX2	29
PA R88	16
PA R88L	16
PA RBOX1	17
PA RBOX2	17
PA RKB2KIT	68
PA RKBKIT	68
PA SC1	47
PA SC2	47
PA SNBK	50
PA SNWH	51
PA SOURCE	40
PA STF1	70
PA STONE	49

CODE	PAGE
PA TR100	78
PA TR24	78
PA TR40	78
PA TR50ST	76
PA TRV120B	76
PA TRV12A	76
PA TRV30B	76
PA TRV50A	76
PA TRV60B	76
PA TRV6B	76
PA UHFSPLITAL	68
PA WS 56EN	12
PA WS 66EN	12
PA WS04	43
PA ZONE8	18
PA ZONE8SLAVE	18
PC260	37
PXCOVER08N	70
PXCOVER12N	70
PXCOVER36N	70
RK12N	73
RK1L	72
RK1NV	72
RK2L	72
RK2NV	72
RK2VP	73
RK3L	72
RK4L	72
RK4N	73
RK6N	73
RK6VP	73
RK8N	73
RK8VP	73
RMW1000H	67
RMW1000M	67
RSM200BK	64

# ALPHABETICAL INDEX

CODE	PAGE
S5CPRO	82
SC965P	60
SDC150	72
SPSK105BKF5	55
STUDIOORKXL08	70
STUDIOORKXL12	70
STUDIOORKXL36	70
SW110AV2	57
SW110PV2	57
SW115AV2	57
SW118P	57
WCS1000CH	24
WCS1000CV2	24
WCS1000DV2	24
WCS1000RXV2	24
WM202H	66
WM202KIT	66
WM202M	66
X30TB	52
X30TW	52
X50CT	45
X50TB	52
X50TW	52
XE35TB	50
XE35TW	51
XE51CT	44
XE55TB	50
XE55TW	51
XE65CT	44
XE65CTX	43
XE65TB	50
XE65TW	51
XLR3FDL	83
XLR3FVPRO	82
XLR3MDL	83
XLR3MVPRO	82
XLR5FDL	83

CODE	PAGE
XLR5FVPRO	82
XLR5MDL	83
XLR5MVPRO	82



## NOTES



This image shows a full page of blank white paper with horizontal ruling lines. The lines are evenly spaced and run across the width of the page, providing a template for writing or drawing. There are no margins, text, or other markings present.

## NOTES

This image shows a single sheet of white paper with horizontal ruling lines. The lines are evenly spaced and run across the width of the page. There are no margins, text, or other markings on the paper.



Centrum Nauki i Kultury, Budynek Wiedzy  
Wybrzeże Kościuszkowskie, Tamka, most Świętokrzyski, ul. Zajęcza  
30 Praga, Marienstraße, Pl. Tychy Krzyży, Tł.



# PROEL

## ITALY

Proel Lab Spa  
Acquaviva Picena

## UK

Proel International Ltd.  
London

## KOREA

Proel Korea Co. Ltd.  
Gyeonggi-Do

## MALAYSIA

Proel Malaysia Snd. Bhd.  
Petaling Jaya

## USA

Proel North America Inc.  
Los Angeles

## TUNISIE

Proel Tunisia Sarl  
Tunisi

## PROEL SPA

(Worldwide Headquarters)  
Via alla Ruenia, 37/43  
64027 Sant'Omero (TE) - ITALY  
Tel. +39 0861 81241  
Fax +39 0861 887862  
P.I. 00778590679  
N.Reg.AEE IT 08020000002762

[info@proel.com](mailto:info@proel.com)  
[www.proel.com](http://www.proel.com)

