



PRODUCT GUIDE
JANUARY 2020

www.tamburodrums.com

MADE IN ITALY

FEEEL THE BEST





4 **OPERA**

9 **UNIKA**

14 **SNARE DRUMS OPERA**

16 **SNARE DRUMS UNIKA**

18 **FORMULA**

21 **T5**

25 **HARDWARE**

OPERA



OPERA522



TB OPERA522FR

- Recommended hardware: **600 Series**
- Hardware and cymbals not included
- Additional color options on page 8



INCLUDING	EVANS DRUM HEAD
Bass Drum 22"x17" - 10 Tension Rod	EMAD Batter CLR - EMAD Reso Black
Tom Tom 10"x7" - 6 Tension Rod	G2 CTD Top - G1 CTD Bottom
Tom Tom 12"x8" - 6 Tension Rod	G2 CTD Top - G1 CTD Bottom
Floor Tom 14"x14" - 8 Tension Rod	G2 CTD Top - G1 CTD Bottom
Snare Drum 14"x6,5" - 10 Tension Rod	G1 CTD Top - Snare Side 300
SHELLS	
Staves structure in 6 mm Birch + outer layer Melamine	
TBS2J Toms attachment (x2)	
Hoops: DIE-CAST	

OPERA520



TB OPERA520FB

- Recommended hardware: **600 Series**
- Hardware and cymbals not included
- Additional color options on page 8



INCLUDING	EVANS DRUM HEAD
Bass Drum 20"x17" - 10 Tension Rod	EMAD Batter CLR - EMAD Reso Black
Tom Tom 10"x7" - 6 Tension Rod	G2 CTD Top - G1 CTD Bottom
Tom Tom 12"x8" - 6 Tension Rod	G2 CTD Top - G1 CTD Bottom
Floor Tom 14"x14" - 8 Tension Rod	G2 CTD Top - G1 CTD Bottom
Snare Drum 14"x6,5" - 10 Tension Rod	G1 CTD Top - Snare Side 300
SHELLS	
Staves structure in 6 mm Birch + outer layer Melamine	
TBS2J Toms attachment (x2)	
Hoops: DIE-CAST	

OPERA418



TB OPERA418NS

- Recommended hardware: **600 Series**
- Hardware and cymbals not included
- Additional color options on page 8

INCLUDING	EVANS DRUM HEAD
Bass Drum 18"x 14" - 8 Tension Rod	EMAD Batter CLR - EMAD Reso Black
Tom Tom 12"x 8" - 6 Tension Rod	G2 CTD Top - G1 CTD Bottom
Floor Tom 14"x 14" - 6 Tension Rod	G2 CTD Top - G1 CTD Bottom
Snare Drum 14"x 5,5" - 10 Tension Rod	G1 CTD Top - Snare Side 300
SHELLS	
Staves structure in 6 mm Birch + outer layer Melamine	
TB S2J Toms attachment (x1)	
Hoops: DIE-CAST	

OPERA416



TB OPERA416ZS

- Recommended hardware: **600 Series**
- Hardware and cymbals not included
- Additional color options on page 8

INCLUDING	EVANS DRUM HEAD
Bass Drum 16"x 16" - 8 Tension Rod	EMAD Batter CLR - EQ3-NP Smooth White
Tom Tom 10"x 7" - 6 Tension Rod	G2 CTD Top - G1 CTD Bottom
Floor Tom 13"x 13" - 6 Tension Rod	G2 CTD Top - G1 CTD Bottom
Snare Drum 13"x 6,5" - 8 Tension Rod	G1 CTD Top - Snare Side 300
SHELLS	
Staves structure in 6 mm Birch + outer layer Melamine	
TB S2J Toms attachment (x1)	
TB PAJ Bass drum riser (x1)	
Hoops: DIE-CAST	

INDIVIDUAL MODEL OPERA

MODEL No.	DIAMETER	DEPTH	EVANS Drum Head
BASS DRUMS			
TB OPBD1614 (UL-NS-ZS-MA-FR-FB)	16"	14"	EMAD Batter CLR - EQ3-NP Smooth White
TB OPBD1616 (UL-NS-ZS-MA-FR-FB)	16"	16"	EMAD Batter CLR - EQ3-NP Smooth White
TB OPBD1814 (UL-NS-ZS-MA-FR-FB)	18"	14"	EMAD Batter CLR - EMAD Reso Black
TB OPBD1816 (UL-NS-ZS-MA-FR-FB)	18"	16"	EMAD Batter CLR - EMAD Reso Black
TB OPBD2014 (UL-NS-ZS-MA-FR-FB)	20"	14"	EMAD Batter CLR - EMAD Reso Black
TB OPBD2016 (UL-NS-ZS-MA-FR-FB)	20"	16"	EMAD Batter CLR - EMAD Reso Black
TB OPBD2017 (UL-NS-ZS-MA-FR-FB)	20"	17"	EMAD Batter CLR - EMAD Reso Black
TB OPBD2214 (UL-NS-ZS-MA-FR-FB)	22"	14"	EMAD Batter CLR - EMAD Reso Black
TB OPBD2216 (UL-NS-ZS-MA-FR-FB)	22"	16"	EMAD Batter CLR - EMAD Reso Black
TB OPBD2217 (UL-NS-ZS-MA-FR-FB)	22"	17"	EMAD Batter CLR - EMAD Reso Black
TOM TOM			
TB OPTT0807 (UL-NS-ZS-MA-FR-FB)	8"	7"	G2 CTD Top - G1 CTD Bottom
TB OPTT0808 (UL-NS-ZS-MA-FR-FB)	8"	8"	G2 CTD Top - G1 CTD Bottom
TB OPTT1007 (UL-NS-ZS-MA-FR-FB)	10"	7"	G2 CTD Top - G1 CTD Bottom
TB OPTT1008 (UL-NS-ZS-MA-FR-FB)	10"	8"	G2 CTD Top - G1 CTD Bottom
TB OPTT1208 (UL-NS-ZS-MA-FR-FB)	12"	8"	G2 CTD Top - G1 CTD Bottom
TB OPTT1209 (UL-NS-ZS-MA-FR-FB)	12"	9"	G2 CTD Top - G1 CTD Bottom
TB OPTT1308 (UL-NS-ZS-MA-FR-FB)	13"	8"	G2 CTD Top - G1 CTD Bottom
TB OPTT1309 (UL-NS-ZS-MA-FR-FB)	13"	9"	G2 CTD Top - G1 CTD Bottom
TB OPTT1310 (UL-NS-ZS-MA-FR-FB)	13"	10"	G2 CTD Top - G1 CTD Bottom
TB OPTT1412 (UL-NS-ZS-MA-FR-FB)	14"	12"	G2 CTD Top - G1 CTD Bottom
TB OPTT1614 (UL-NS-ZS-MA-FR-FB)	16"	14"	G2 CTD Top - G1 CTD Bottom
FLOOR TOM			
TB OPFT1312 (UL-NS-ZS-MA-FR-FB)	13"	12"	G2 CTD Top - G1 CTD Bottom
TB OPFT1313 (UL-NS-ZS-MA-FR-FB)	13"	13"	G2 CTD Top - G1 CTD Bottom
TB OPFT1412 (UL-NS-ZS-MA-FR-FB)	14"	12"	G2 CTD Top - G1 CTD Bottom
TB OPFT1414 (UL-NS-ZS-MA-FR-FB)	14"	14"	G2 CTD Top - G1 CTD Bottom
TB OPFT1614 (UL-NS-ZS-MA-FR-FB)	16"	14"	G2 CTD Top - G1 CTD Bottom
TB OPFT1616 (UL-NS-ZS-MA-FR-FB)	16"	16"	G2 CTD Top - G1 CTD Bottom
TB OPFT1814 (UL-NS-ZS-MA-FR-FB)	18"	14"	G2 CTD Top - G1 CTD Bottom
TB OPFT1816 (UL-NS-ZS-MA-FR-FB)	18"	16"	G2 CTD Top - G1 CTD Bottom
SNARE DRUM			
TB OPSD0865 (UL-NS-ZS-MA-FR-FB)	8"	6.5"	G1 CTD Top - Snare Side 300
TB OPSD1055 (UL-NS-ZS-MA-FR-FB)	10"	5.5"	G1 CTD Top - Snare Side 300
TB OPSD1065 (UL-NS-ZS-MA-FR-FB)	10"	6.5"	G1 CTD Top - Snare Side 300
TB OPSD1205 (UL-NS-ZS-MA-FR-FB)	12"	5"	G1 CTD Top - Snare Side 300
TB OPSD1255 (UL-NS-ZS-MA-FR-FB)	12"	5.5"	G1 CTD Top - Snare Side 300
TB OPSD1265 (UL-NS-ZS-MA-FR-FB)	12"	6.5"	G1 CTD Top - Snare Side 300
TB OPSD1208 (UL-NS-ZS-MA-FR-FB)	12"	8"	G1 CTD Top - Snare Side 300
TB OPSD1335 (UL-NS-ZS-MA-FR-FB)	13"	3.5"	G1 CTD Top - Snare Side 300
TB OPSD1305 (UL-NS-ZS-MA-FR-FB)	13"	5"	G1 CTD Top - Snare Side 300
TB OPSD1355 (UL-NS-ZS-MA-FR-FB)	13"	5.5"	G1 CTD Top - Snare Side 300
TB OPSD1365 (UL-NS-ZS-MA-FR-FB)	13"	6.5"	G1 CTD Top - Snare Side 300
TB OPSD1308 (UL-NS-ZS-MA-FR-FB)	13"	8"	G1 CTD Top - Snare Side 300
TB OPSD1435 (UL-NS-ZS-MA-FR-FB)	14"	3.5"	G1 CTD Top - Snare Side 300
TB OPSD1405 (UL-NS-ZS-MA-FR-FB)	14"	5"	G1 CTD Top - Snare Side 300
TB OPSD1455 (UL-NS-ZS-MA-FR-FB)	14"	5.5"	G1 CTD Top - Snare Side 300
TB OPSD1465 (UL-NS-ZS-MA-FR-FB)	14"	6.5"	G1 CTD Top - Snare Side 300
TB OPSD1408 (UL-NS-ZS-MA-FR-FB)	14"	8"	G1 CTD Top - Snare Side 300

CODE SYSTEM OPERA DRUM SET

TB OPERA 522 UL

TAMBURO

SERIES

DRUM SET CONFIGURATION

COLOR

CODE SYSTEM OPERA INDIVIDUAL MODEL

TB OP TT 10 08 UL

TAMBURO

OPERA SERIES

MODEL

DIAMETER

DEPTH

COLOR

MODELS:

- **TT** - TOM TOM
- **SD** - SNARE DRUM
- **FT** - FLOOR TOM
- **BD** - BASS DRUM

COLORS AND FINISHES OPERA SERIES



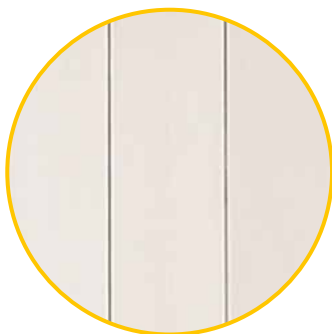
UL
OLIVE



NS
WALNUT



ZS
ZEBRANO



MA
MAPLE



FB
FANTASY BLUE



FR
FANTASY RED

Unika



UNIKA522



TB UNIKA522VT

- Recommended hardware: **350 Series**
- Hardware and cymbals not included
- Additional color options on page 13



INCLUDING	EVANS DRUM HEAD
Bass Drum 22"x17" - 10 Tension Rod	EMAD Batter CLR - EMAD Reso Black
Tom Tom 10"x7" - 6 Tension Rod	G2 CTD Top - G1 CTD Bottom
Tom Tom 12"x8" - 6 Tension Rod	G2 CTD Top - G1 CTD Bottom
Floor Tom 14"x14" - 8 Tension Rod	G2 CTD Top - G1 CTD Bottom
Snare Drum 14"x6,5" - 10 Tension Rod	G1 CTD Top - Snare Side 300
SHELLS	
"sandwich"structure with two strong melamine HPL with Italian Poplar in the middle. Total thikness 4.8 mm TBS2J Toms attachment (x2) Hoops: regular hoops triple flanges	

UNIKA520



TB UNIKA520FC

- Recommended hardware: **350 Series**
- Hardware and cymbals not included
- Additional color options on page 13



INCLUDING	EVANS DRUM HEAD
Bass Drum 20"x17" - 10 Tension Rod	EMAD Batter CLR - EMAD Reso Black
Tom Tom 10"x7" - 6 Tension Rod	G2 CTD Top - G1 CTD Bottom
Tom Tom 12"x8" - 6 Tension Rod	G2 CTD Top - G1 CTD Bottom
Floor Tom 14"x14" - 8 Tension Rod	G2 CTD Top - G1 CTD Bottom
Snare Drum 14"x6,5" - 10 Tension Rod	G1 CTD Top - Snare Side 300
SHELLS	
"sandwich"structure with two strong melamine HPL with Italian Poplar in the middle. Total thikness 4.8 mm TBS2J Toms attachment (x2) Hoops: regular hoops triple flanges	

UNIKA418



TB UNIKA418UL

- Recommended hardware: **350 Series**
- Hardware and cymbals not included
- Additional color options on page 13



INCLUDING	EVANS DRUM HEAD
Bass Drum 18" x 14" - 8 Tension Rod	EMAD Batter CLR - EMAD Reso Black
Tom Tom 12" x 8" - 6 Tension Rod	G2 CTD Top - G1 CTD Bottom
Floor Tom 14" x 14" - 6 Tension Rod	G2 CTD Top - G1 CTD Bottom
Snare Drum 14" x 5,5" - 10 Tension Rod	G1 CTD Top - Snare Side 300
SHELLS	
"sandwich" structure with two strong melamine HPL with Italian Poplar in the middle. Total thickness 4.8 mm TBS2J Toms attachment (x1) Hoops: regular hoops triple flanges	

UNIKA416



TB UNIKA416FY

- Recommended hardware: **350 Series**
- Hardware and cymbals not included
- Additional color options on page 13



INCLUDING	EVANS DRUM HEAD
Bass Drum 16" x 16" - 8 Tension Rod	EMAD Batter CLR - EQ3-NP Smooth White
Tom Tom 10" x 7" - 6 Tension Rod	G2 CTD Top - G1 CTD Bottom
Floor Tom 13" x 13" - 6 Tension Rod	G2 CTD Top - G1 CTD Bottom
Snare Drum 13" x 6,5" - 8 Tension Rod	G1 CTD Top - Snare Side 300
SHELLS	
"sandwich" structure with two strong melamine HPL with Italian Poplar in the middle. Total thickness 4.8 mm TB S2J Toms attachment (x1) TB PAJ Bass drum riser (x1) Hoops: regular hoops triple flanges	

INDIVIDUAL MODEL UNIKA

MODEL No.	DIAMETER	DEPTH	EVANS Drum Head
BASS DRUMS			
TB UKBD1614 (UL-VT-FN-FC-FB-FR-FY)	16"	14"	EMAD Batter CLR - EQ3-NP Smooth White
TB UKBD1616 (UL-VT-FN-FC-FB-FR-FY)	16"	16"	EMAD Batter CLR - EQ3-NP Smooth White
TB UKBD1814 (UL-VT-FN-FC-FB-FR-FY)	18"	14"	EMAD Batter CLR - EMAD Reso Black
TB UKBD1816 (UL-VT-FN-FC-FB-FR-FY)	18"	16"	EMAD Batter CLR - EMAD Reso Black
TB UKBD2014 (UL-VT-FN-FC-FB-FR-FY)	20"	14"	EMAD Batter CLR - EMAD Reso Black
TB UKBD2016 (UL-VT-FN-FC-FB-FR-FY)	20"	16"	EMAD Batter CLR - EMAD Reso Black
TB UKBD2017 (UL-VT-FN-FC-FB-FR-FY)	20"	17"	EMAD Batter CLR - EMAD Reso Black
TB UKBD2214 (UL-VT-FN-FC-FB-FR-FY)	22"	14"	EMAD Batter CLR - EMAD Reso Black
TB UKBD2216 (UL-VT-FN-FC-FB-FR-FY)	22"	16"	EMAD Batter CLR - EMAD Reso Black
TB UKBD2217 (UL-VT-FN-FC-FB-FR-FY)	22"	17"	EMAD Batter CLR - EMAD Reso Black
TOM TOM			
TB UKTT0807 (UL-VT-FN-FC-FB-FR-FY)	8"	7"	G2 CTD Top - G1 CTD Bottom
TB UKTT0808 (UL-VT-FN-FC-FB-FR-FY)	8"	8"	G2 CTD Top - G1 CTD Bottom
TB UKTT1007 (UL-VT-FN-FC-FB-FR-FY)	10"	7"	G2 CTD Top - G1 CTD Bottom
TB UKTT1008 (UL-VT-FN-FC-FB-FR-FY)	10"	8"	G2 CTD Top - G1 CTD Bottom
TB UKTT1208 (UL-VT-FN-FC-FB-FR-FY)	12"	8"	G2 CTD Top - G1 CTD Bottom
TB UKTT1209 (UL-VT-FN-FC-FB-FR-FY)	12"	9"	G2 CTD Top - G1 CTD Bottom
TB UKTT1308 (UL-VT-FN-FC-FB-FR-FY)	13"	8"	G2 CTD Top - G1 CTD Bottom
TB UKTT1309 (UL-VT-FN-FC-FB-FR-FY)	13"	9"	G2 CTD Top - G1 CTD Bottom
TB UKTT1310 (UL-VT-FN-FC-FB-FR-FY)	13"	10"	G2 CTD Top - G1 CTD Bottom
TB UKTT1412 (UL-VT-FN-FC-FB-FR-FY)	14"	12"	G2 CTD Top - G1 CTD Bottom
TB UKTT1614 (UL-VT-FN-FC-FB-FR-FY)	16"	14"	G2 CTD Top - G1 CTD Bottom
FLOOR TOM			
TB UKFT1312 (UL-VT-FN-FC-FB-FR-FY)	13"	12"	G2 CTD Top - G1 CTD Bottom
TB UKFT1313 (UL-VT-FN-FC-FB-FR-FY)	13"	13"	G2 CTD Top - G1 CTD Bottom
TB UKFT1412 (UL-VT-FN-FC-FB-FR-FY)	14"	12"	G2 CTD Top - G1 CTD Bottom
TB UKFT1414 (UL-VT-FN-FC-FB-FR-FY)	14"	14"	G2 CTD Top - G1 CTD Bottom
TB UKFT1614 (UL-VT-FN-FC-FB-FR-FY)	16"	14"	G2 CTD Top - G1 CTD Bottom
TB UKFT1616 (UL-VT-FN-FC-FB-FR-FY)	16"	16"	G2 CTD Top - G1 CTD Bottom
TB UKFT1814 (UL-VT-FN-FC-FB-FR-FY)	18"	14"	G2 CTD Top - G1 CTD Bottom
TB UKFT1816 (UL-VT-FN-FC-FB-FR-FY)	18"	16"	G2 CTD Top - G1 CTD Bottom
SNARE DRUM			
TB UKSD0865 (UL-VT-FN-FC-FB-FR-FY)	8"	6.5"	G1 CTD Top - Snare Side 300
TB UKSD1055 (UL-VT-FN-FC-FB-FR-FY)	10"	5.5"	G1 CTD Top - Snare Side 300
TB UKSD1065 (UL-VT-FN-FC-FB-FR-FY)	10"	6.5"	G1 CTD Top - Snare Side 300
TB UKSD1205 (UL-VT-FN-FC-FB-FR-FY)	12"	5"	G1 CTD Top - Snare Side 300
TB UKSD1255 (UL-VT-FN-FC-FB-FR-FY)	12"	5.5"	G1 CTD Top - Snare Side 300
TB UKSD1265 (UL-VT-FN-FC-FB-FR-FY)	12"	6.5"	G1 CTD Top - Snare Side 300
TB UKSD1208 (UL-VT-FN-FC-FB-FR-FY)	12"	8"	G1 CTD Top - Snare Side 300
TB UKSD1335 (UL-VT-FN-FC-FB-FR-FY)	13"	3.5"	G1 CTD Top - Snare Side 300
TB UKSD1305 (UL-VT-FN-FC-FB-FR-FY)	13"	5"	G1 CTD Top - Snare Side 300
TB UKSD1355 (UL-VT-FN-FC-FB-FR-FY)	13"	5.5"	G1 CTD Top - Snare Side 300
TB UKSD1365 (UL-VT-FN-FC-FB-FR-FY)	13"	6.5"	G1 CTD Top - Snare Side 300
TB UKSD1308 (UL-VT-FN-FC-FB-FR-FY)	13"	8"	G1 CTD Top - Snare Side 300
TB UKSD1435 (UL-VT-FN-FC-FB-FR-FY)	14"	3.5"	G1 CTD Top - Snare Side 300
TB UKSD1405 (UL-VT-FN-FC-FB-FR-FY)	14"	5"	G1 CTD Top - Snare Side 300
TB UKSD1455 (UL-VT-FN-FC-FB-FR-FY)	14"	5.5"	G1 CTD Top - Snare Side 300
TB UKSD1465 (UL-VT-FN-FC-FB-FR-FY)	14"	6.5"	G1 CTD Top - Snare Side 300
TB UKSD1408 (UL-VT-FN-FC-FB-FR-FY)	14"	8"	G1 CTD Top - Snare Side 300

CODE SYSTEM UNIKA DRUM SET

TB UNIKA 522 FN

TAMBURO

SERIES

DRUM SET CONFIGURATION

COLOR

CODE SYSTEM UNIKA INDIVIDUAL MODEL

TB UK TT 10 08 FN

TAMBURO

UNIKA SERIES

MODEL

DIAMETER

DEPTH

COLOR

MODELS:

- **TT** - TOM TOM
- **SD** - SNARE DRUM
- **FT** - FLOOR TOM
- **BD** - BASS DRUM

COLORS AND FINISHES UNIKA SERIES



UL
OLIVE



FN
FLAMED
BLACK



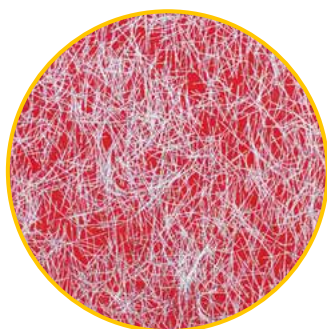
VT
VINTAGE



FC
FLAMED
CASHMERE



FB
FANTASY BLUE



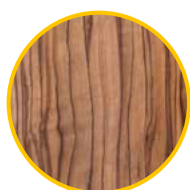
FR
FANTASY RED



FY
FANTASY YELLOW

SNARE DRUMS OPERA SERIES

Tamburo has a variety of snare drums related to the Opera Series. A great snare drum for all drummers. Below the different size and finishes.



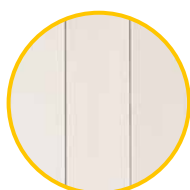
UL
OLIVE



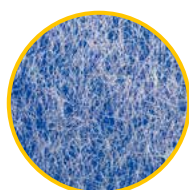
NS
WALNUT



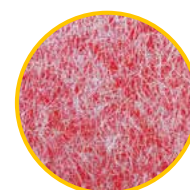
ZS
ZEBRANO



MA
MAPLE



FB
FANTASY BLUE



FR
FANTASY RED

TB OPSD0865UL

Shell: staves structure in 6mm Birch+outer layer in HPL melamine

Diameter: 8"

Depth: 6,5"

Hoops: DIE-CAST

4 Tension Rod

Snare Wire - 20

Drum Head: EVANS

G1 coated

Snare side 300 Clr

TB OPSD1055UL

Shell: staves structure in 6mm Birch+outer layer in HPL melamine

Diameter: 10"

Depth: 5,5"

Hoops: DIE-CAST

6 Tension Rod

Snare Wire - 20

Drum Head: EVANS

G1 coated

Snare side 300 Clr

TB OPSD1065UL

Shell: staves structure in 6mm Birch+outer layer in HPL melamine

Diameter: 10"

Depth: 6,5"

Hoops: DIE-CAST

6 Tension Rod

Snare Wire - 20

Drum Head: EVANS

G1 coated

Snare side 300 Clr

TB OPSD1205UL

Shell: staves structure in 6mm Birch+outer layer in HPL melamine

Diameter: 12"

Depth: 5"

Hoops: DIE-CAST

8 Tension Rod

Snare Wire - 20

Drum Head: EVANS

G1 coated

Snare side 300 Clr

TB OPSD1255UL

Shell: staves structure in 6mm Birch+outer layer in HPL melamine

Diameter: 12"

Depth: 5,5"

Hoops: DIE-CAST

8 Tension Rod

Snare Wire - 20

Drum Head: EVANS

G1 coated

Snare side 300 Clr

TB OPSD1265UL

Shell: staves structure in 6mm Birch+outer layer in HPL melamine

Diameter: 12"

Depth: 6,5"

Hoops: DIE-CAST

8 Tension Rod

Snare Wire - 20

Drum Head: EVANS

G1 coated

Snare side 300 Clr

TB OPSD1208UL

Shell: staves structure in 6mm Birch+outer layer in HPL melamine

Diameter: 12"

Depth: 8"

Hoops: DIE-CAST

8 Tension Rod

Cordiaera Steel 20 fili

Drum Head: EVANS

G1 coated

Snare side 300 Clr

TB OPSD1335UL

Shell: staves structure in 6mm Birch+outer layer in HPL melamine

Diameter: 13"

Depth: 3,5"

Hoops: DIE-CAST

8 Tension Rod

Cordiaera Steel 20 fili

Drum Head: EVANS

G1 coated

Snare side 300 Clr

TB OPSD1305UL

Shell: staves structure in 6mm Birch+outer layer in HPL melamine

Diameter: 13"

Depth: 5"

Hoops: DIE-CAST

8 Tension Rod

Cordiaera Steel 20 fili

Drum Head: EVANS

G1 coated

Snare side 300 Clr

TB OPSD1355UL

Shell: staves structure in 6mm Birch+outer layer in HPL melamine

Diameter: 13"

Depth: 5,5"

Hoops: DIE-CAST

8 Tension Rod

Snare Wire - 20

Drum Head: EVANS

G1 coated

Snare side 300 Clr

TB OPSD1365UL

Shell: staves structure in 6mm Birch+outer layer in HPL melamine

Diameter: 13"

Depth: 6,5"

Hoops: DIE-CAST

8 Tension Rod

Snare Wire - 20

Drum Head: EVANS

G1 coated

Snare side 300 Clr

TB OPSD1308UL

Shell: staves structure in 6mm Birch+outer layer in HPL melamine

Diameter: 13"

Depth: 8"

Hoops: DIE-CAST

8 Tension Rod

Snare Wire - 20

Drum Head: EVANS

G1 coated

Snare side 300 Clr

TB OPSD1435UL

Shell: staves structure in 6mm Birch+outer layer in HPL melamine

Diameter: 14"

Depth: 3,5"

Hoops: DIE-CAST

10 Tension Rod

Snare Wire - 20

Drum Head: EVANS

G1 coated

Snare side 300 Clr

TB OPSD1405UL

Shell: staves structure in 6mm Birch+outer layer in HPL melamine

Diameter: 14"

Depth: 5"

Hoops: DIE-CAST

10 Tension Rod

Snare Wire - 20

Drum Head: EVANS

G1 coated

Snare side 300 Clr

TB OPSD1455UL

Shell: staves structure in 6mm Birch+outer layer in HPL melamine

Diameter: 14"

Depth: 5,5"

Hoops: DIE-CAST

10 Tension Rod

Snare Wire - 20

Drum Head: EVANS

G1 coated

Snare side 300 Clr

TB OPSD1465UL

Shell: staves structure in 6mm Birch+outer layer in HPL melamine

Diameter: 14"

Depth: 6,5"

Hoops: DIE-CAST

10 Tension Rod

Snare Wire - 20

Drum Head: EVANS

G1 coated

Snare side 300 Clr

TB OPSD1408UL

Shell: staves structure in 6mm Birch+outer layer in HPL melamine

Diameter: 14"

Depth: 8"

Hoops: DIE-CAST

10 Tension Rod

Snare Wire - 20

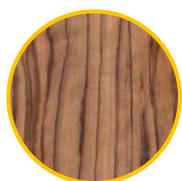
Drum Head: EVANS

G1 coated

Snare side 300 Clr

SNARE DRUMS UNIKA SERIES

Tamburo has a variety of snare drums related to the Unika Series. A great snare drum for all drummers. Below the different size and finishes.



UL
OLIVE



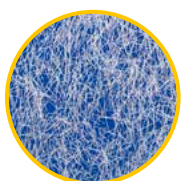
FN
FLAMED BLACK



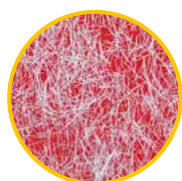
FC
FLAMED CASHMERE



VT
VINTAGE



FB
FANTASY BLUE



FR
FANTASY RED



FY
FANTASY YELLOW

NEW

TB UKSD0865FN

Shells: "sandwich" structure with two strong melamine HPL with Italian Poplar in the middle. Total thickness 4.8 mm

Diameter: 8"

Depth: 6,5"

Hoops: regular hoops triple flanges

4 Tension Rod

Snare Wire - 20

Drum Head: EVANS

G1 coated

Snare side 300 Clr

TB UKSD1055FN

Shells: "sandwich" structure with two strong melamine HPL with Italian Poplar in the middle. Total thickness 4.8 mm

Diameter: 10"

Depth: 5,5"

Hoops: regular hoops triple flanges

6 Tension Rod

Snare Wire - 20

Drum Head: EVANS

G1 coated

Snare side 300 Clr

TB UKSD1065FN

Shells: "sandwich" structure with two strong melamine HPL with Italian Poplar in the middle. Total thickness 4.8 mm

Diameter: 10"

Depth: 6,5"

Hoops: regular hoops triple flanges

6 Tension Rod

Snare Wire - 20

Drum Head: EVANS

G1 coated

Snare side 300 Clr

TB UKSD1205FN

Shells: "sandwich" structure with two strong melamine HPL with Italian Poplar in the middle. Total thickness 4.8 mm

Diameter: 12"

Depth: 5"

Hoops: regular hoops triple flanges

8 Tension Rod

Snare Wire - 20

Drum Head: EVANS

G1 coated

Snare side 300 Clr

TB UKSD1255FN

Shells: "sandwich" structure with two strong melamine HPL with Italian Poplar in the middle. Total thickness 4.8 mm

Diameter: 12"

Depth: 5,5"

Hoops: regular hoops triple flanges

8 Tension Rod

Snare Wire - 20

Drum Head: EVANS

G1 coated

Snare side 300 Clr

TB UKSD1265FN

Shells: "sandwich" structure with two strong melamine HPL with Italian Poplar in the middle. Total thickness 4.8 mm

Diameter: 12"

Depth: 6,5"

Hoops: regular hoops triple flanges

8 Tension Rod

Snare Wire - 20

Drum Head: EVANS

G1 coated

Snare side 300 Clr

TB UKSD1208FN

Shells: "sandwich" structure with two strong melamine HPL with Italian Poplar in the middle. Total thickness 4.8 mm

Diameter: 12"

Depth: 8"

Hoops: regular hoops triple flanges

8 Tension Rod

Snare Wire - 20

Drum Head: EVANS

G1 coated

Snare side 300 Clr

TB UKSD1335FN

Shells: "sandwich" structure with two strong melamine HPL with Italian Poplar in the middle. Total thickness 4.8 mm

Diameter: 13"

Depth: 3,5"

Hoops: regular hoops triple flanges

8 Tension Rod

Snare Wire - 20

Drum Head: EVANS

G1 coated

Snare side 300 Clr

TB UKSD1305FN

Shells: "sandwich" structure with two strong melamine HPL with Italian Poplar in the middle. Total thickness 4.8 mm

Diameter: 13"

Depth: 5"

Hoops: regular hoops triple flanges

8 Tension Rod

Snare Wire - 20

Drum Head: EVANS

G1 coated

Snare side 300 Clr

TB UKSD1355FN

Shells: "sandwich" structure with two strong melamine HPL with Italian Poplar in the middle. Total thickness 4.8 mm

Diameter: 13"

Depth: 5,5"

Hoops: regular hoops triple flanges

8 Tension Rod

Snare Wire - 20

Drum Head: EVANS

G1 coated

Snare side 300 Clr

TB UKSD1365FN

Shells: "sandwich" structure with two strong melamine HPL with Italian Poplar in the middle. Total thickness 4.8 mm

Diameter: 13"

Depth: 6,5"

Hoops: regular hoops triple flanges

8 Tension Rod

Snare Wire - 20

Drum Head: EVANS

G1 coated

Snare side 300 Clr

TB UKSD1308FN

Shells: "sandwich" structure with two strong melamine HPL with Italian Poplar in the middle. Total thickness 4.8 mm

Diameter: 13"

Depth: 8"

Hoops: regular hoops triple flanges

8 Tension Rod

Snare Wire - 20

Drum Head: EVANS

G1 coated

Snare side 300 Clr

TB UKSD1435FN

Shells: "sandwich" structure with two strong melamine HPL with Italian Poplar in the middle. Total thickness 4.8 mm

Diameter: 14"

Depth: 3,5"

Hoops: regular hoops triple flanges

10 Tension Rod

Snare Wire - 20

Drum Head: EVANS

G1 coated

Snare side 300 Clr

TB UKSD1405FN

Shells: "sandwich" structure with two strong melamine HPL with Italian Poplar in the middle. Total thickness 4.8 mm

Diameter: 14"

Depth: 5"

Hoops: regular hoops triple flanges

10 Tension Rod

Snare Wire - 20

Drum Head: EVANS

G1 coated

Snare side 300 Clr

TB UKSD1455FN

Shells: "sandwich" structure with two strong melamine HPL with Italian Poplar in the middle. Total thickness 4.8 mm

Diameter: 14"

Depth: 5,5"

Hoops: regular hoops triple flanges

10 Tension Rod

Snare Wire - 20

Drum Head: EVANS

G1 coated

Snare side 300 Clr

TB UKSD1465FN

Shells: "sandwich" structure with two strong melamine HPL with Italian Poplar in the middle. Total thickness 4.8 mm

Diameter: 14"

Depth: 6,5"

Hoops: regular hoops triple flanges

10 Tension Rod

Snare Wire - 20

Drum Head: EVANS

G1 coated

Snare side 300 Clr

TB UKSD1408FN

Shells: "sandwich" structure with two strong melamine HPL with Italian Poplar in the middle. Total thickness 4.8 mm

Diameter: 14"

Depth: 8"

Hoops: regular hoops triple flanges

10 Tension Rod

Snare Wire - 20

Drum Head: EVANS

G1 coated

Snare side 300 Clr

FORMULA



FORMULA22



TB FORMULA22CG

- Included 5A Sticks
- Color options on page 20

INCLUDING

- Bass Drum 22"x16" - 10 Tension Rod
- Tom Tom 10"x8" - 6 Tension Rod
- Tom Tom 12"x9" - 6 Tension Rod
- Floor Tom 16"x16" - 8 Tension Rod
- Snare Drum 14"x5,5" - 10 Tension Rod

SHELLS

- Shells: Traditional structure. Birch 6,5 mm
- Hoops: regular hoops triple flanges
- Drum Head: REMO UT

HARDWARE INCLUDED

- TB CBS350 - Cymbal Boom Stand
- TB HH350 - Hi-Hat Stand
- TB SS350 - Snare Stand
- TB DT350 - Drum Throne
- TB FP200 - Bass Drum Pedal



FORMULA20



TB FORMULA20SBK

- Included 5A Sticks
- Color options on page 20

INCLUDING

- Bass Drum 20"x16" - 10 Tension Rod
- Tom Tom 10"x8" - 6 Tension Rod
- Tom Tom 12"x9" - 6 Tension Rod
- Floor Tom 14"x14" - 8 Tension Rod
- Snare Drum 14"x5,5" - 10 Tension Rod

SHELLS

- Shells: Traditional structure. Birch 6,5 mm
- Hoops: regular hoops triple flanges
- Drum Head: REMO UT

HARDWARE INCLUDED

- TB CBS350 - Cymbal Boom Stand
- TB HH350 - Hi-Hat Stand
- TB SS350 - Snare Stand
- TB DT350 - Drum Throne
- TB FP200 - Bass Drum Pedal



FORMULA18



INCLUDING

Bass Drum 18"x16" - 8 Tension Rod
Tom Tom 10"x8" - 6 Tension Rod
Tom Tom 12"x9" - 6 Tension Rod
Floor Tom 14"x14" - 8 Tension Rod
Snare Drum 14"x5,5" - 10 Tension Rod

SHELLS

Shells: Traditional structure. Birch 6,5 mm
Hoops: regular hoops triple flanges
Drum Head: REMO UT

HARDWARE INCLUDED

TB CBS350 - Cymbal Boom Stand
TB HH350 - Hi-Hat Stand
TB SS350 - Snare Stand
TB DT350 - Drum Throne
TB FP200 - Bass Drum Pedal

TB FORMULA18LBR

- Included 5A Sticks
- Color options on page 20



CODE SYSTEM FORMULA DRUM SET

TB FORMULA 18 BR

TAMBURO

SERIES

DRUM SET CONFIGURATION

COLOR

COLOURS AND FINISHES FORMULA SERIES



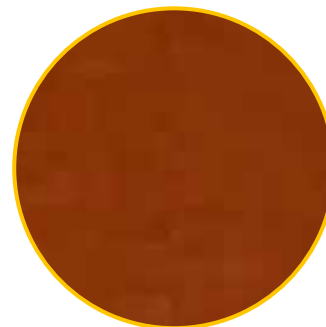
CG

CHERRY GLOSS



SBK

SATIN BLACK



BR

LIGHT BROWN

T5



T5S22



INCLUDING

Bass Drum 22"x16" - 10 Tension Rod
Tom Tom 10"x8" - 6 Tension Rod
Tom Tom 12"x9" - 6 Tension Rod
Floor Tom 14"x14" - 6 Tension Rod
Snare Drum 14"x5,5" - 8 Tension Rod

SHELLS

Shells: traditional structure
Wood + PVC coating
Hoops: regular hoops triple flanges

HARDWARE INCLUDED (200 Series)

TB CBS200 - Cymbal Boom Stand
TB HH200 - Hi-Hat Stand
TB SS200 - Snare Stand
TB DT200S - Drum Throne
TB FP200 - Drum Pedal



TB T5S22GRSK

- Included 5A Sticks
- Color options on page 24

T5M22



INCLUDING

Bass Drum 22"x16" - 10 Tension Rod
Tom Tom 12"x9" - 6 Tension Rod
Tom Tom 13"x10" - 6 Tension Rod
Floor Tom 16"x16" - 6 Tension Rod
Snare Drum 14"x5,5" - 8 Tension Rod

SHELLS

Shells: traditional structure
Wood + PVC coating
Hoops: regular hoops triple flanges

HARDWARE INCLUDED (200 Series)

TB CBS200 - Cymbal Boom Stand
TB HH200 - Hi-Hat Stand
TB SS200 - Snare Stand
TB DT200S - Drum Throne
TB FP200 - Drum Pedal



TB T5M22SLSK

- Included 5A Sticks
- Color options on page 24

T5P20



TB T5P20BSSK

- Included 5A Sticks
- Color options on page 24

INCLUDING

- Bass Drum 20"x16" - 10 Tension Rod
- Tom Tom 10"x8" - 6 Tension Rod
- Tom Tom 12"x9" - 6 Tension Rod
- Floor Tom 14"x14" - 6 Tension Rod
- Snare Drum 14"x5,5" - 8 Tension Rod

SHELLS

- Shells: traditional structure
- Wood + PVC coating
- Hoops: regular hoops triple flanges

HARDWARE INCLUDED (200 Series)

- TB CBS200 - Cymbal Boom Stand
- TB HH200 - Hi-Hat Stand
- TB SS200 - Snare Stand
- TB DT200S - Drum Throne
- TB FP200 - Drum Pedal



T5S18



TB T5S18BLSK

- Included 5A Sticks
- Color options on page 24

INCLUDING

- Bass Drum 18"x16" - 10 Tension Rod
- Tom Tom 10"x8" - 6 Tension Rod
- Tom Tom 12"x9" - 6 Tension Rod
- Floor Tom 14"x14" - 6 Tension Rod
- Snare Drum 14"x5,5" - 8 Tension Rod

SHELLS

- Shells: traditional structure
- Wood + PVC coating
- Hoops: regular hoops triple flanges

HARDWARE INCLUDED (200 Series)

- TB CBS200 - Cymbal Boom Stand
- TB HH200 - Hi-Hat Stand
- TB SS200 - Snare Stand
- TB DT200S - Drum Throne
- TB FP200 - Drum Pedal



T5S16



INCLUDING

Bass Drum 16"x16" - 10 Tension Rod
Tom Tom 10"x8" - 6 Tension Rod
Tom Tom 12"x8" - 6 Tension Rod
Floor Tom 13"x13" - 6 Tension Rod
Snare Drum 13"x5,5" - 8 Tension Rod

SHELLS

Shells: traditional structure
Wood + PVC coating
Hoops: regular hoops triple flanges

HARDWARE INCLUDED (200 Series)

TB CBS200 - Cymbal Boom Stand
TB HH200 - Hi-Hat Stand
TB SS200 - Snare Stand
TB DT200S - Drum Throne
TB FP200 - Drum Pedal



TB T5S16RSSK

- Included 5A Sticks
- Color options on page 24

CODE SYSTEM T5 DRUM SET

TB T5 S22 GRSK

TAMBURO

SERIES

DRUM SET CONFIGURATION

COLOR

COLOURS AND FINISHES T5 SERIES



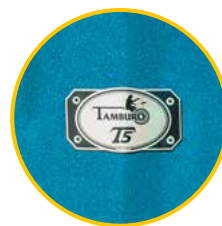
GRSK
GREEN
SPARKLE



BSSK
BLACK
SPARKLE



SLSK
SILVER
SPARKLE



BLSK
BLUE
SPARKLE



RSSK
RED
SPARKLE

HARDWARE



BASS DRUM PEDAL

TB FP100

Bass Drum Single Pedal

- Bass drum pedal with side spring
- Best in class by price/quality ratio



TB FP200

Bass Drum Single Pedal

- Bass drum pedal with professional bridge and reinforcement under the bar



TB FP600

Bass Drum Single Pedal

- Professional bass drum pedal with reinforcement
- Plate and bridge reinforcement under the bar
- Bag included



TB FDP600

Bass Drum Double Pedal

- Professional bass drum pedal with reinforcement plate
- Bridge reinforcement under the bar
- Additional spring on left pedal gives better response
- Bag included



CYMBAL STAND

TB CS100

Straight Cymbal Stand

- Pipes section: 19mm x 16mm x 13mm



TB CBS100

Boom Cymbal Stand

- Pipes section: 19mm x 16mm
- Arm length: 457mm



TB CS200

Straight Cymbal Stand

- Pipes section: 25mm x 19mm x 16mm



TB CBS200

Boom Cymbal Stand

- Pipes section: 25mm x 19mm
- Arm length: 457mm



TB CBS350

Boom Cymbal Stand

- Pipes section: 25mm x 22mm x 19mm
- Arm length: 457mm



TB CBS600

Boom Cymbal Stand

- Pipes section: 28,6mm x 25mm x 22mm
- Arm length: 580mm



HI-HAT STAND

TB HH100

Hi-Hat Stand

- Pipes section: 19mm x 16mm
- Height: 700mm.850mm



TB HH200

Hi-Hat Stand

- Pipes section: 25mm x 19mm
- Height: 700mm.900mm



TB HH350

Hi-Hat Stand

- Pipes section: 25mm x 22mm
- Height: 700mm.850mm



TB HH600

Hi-Hat Stand

- Pipes section: 28,6mm x 25mm
- Height: 700mm.950mm
- Double Chain System



SNARE STAND

TB SS100

Snare Stand

- Fits 12" to 14" snare drum
- Pipes section: 19mm x 16mm
- Height: 450mm, 550mm



TB SS200

Snare Stand

- Fits 12" to 14" snare drum
- Pipes section: 25mm x 19mm
- Height: 480mm, 600mm



TB SS350

Snare Stand

- Fits 12" to 14" snare drum
- Pipes section: 25mm x 22mm
- Height: 480mm, 600mm



TB SS600

Snare Stand

- Fits 12" to 14" snare drum
- Pipes section: 28,6mm x 25mm
- Height: 470mm, 800mm



DRUM THRONE

TB DT200

Drum Throne

- Seat Diameter: 280mm
- Pipe Section: 28,6mm
- Height: 480mm - 590mm



TB DT350

Drum Throne

- Seat Diameter: 320mm
- Pipe Section: 28,6mm
- Height: 500mm - 630mm



TB DT600

Drum Throne

- Moto style ergonomic seat
- Pipe Section: 28,6mm
- Height: 520mm - 650mm





www.tamburodrums.com



ITALY

Proel Lab Spa
Acquaviva Picena

UK

Proel International Ltd.
London

KOREA

Proel Korea Co. Ltd.
Gyunggi-Do

MALAYSIA

Proel Malaysia Snd. Bhd.
Petaling Jaya

USA

Proel North America Inc.
Los Angeles

TUNISIE

Proel Tunisia Sarl
Tunisi

TAMBURO is a brand of
PROEL SPA
(Worldwide Headquarters)
Via alla Ruenia, 37/43
64027 Sant'Omero (TE) - ITALY
Tel. +39 0861 81241
Fax +39 0861 887862
P.I. 00778590679
N.Reg.AEE IT 08020000002762

info@proel.com
www.proel.com

